



## **CITIZENS ADVISORY COMMITTEE**

Ocala Citizens Service Center  
201 SE 3rd Street, Ocala FL 34478

**June 14, 2016  
3:00 PM**

### **AGENDA**

**1. CALL TO ORDER AND ROLL CALL**

**2. PROOF OF PUBLICATION**

**3. ACTION ITEMS**

**A. DRAFT FY 2022 PRIORITY PROJECTS**

*Each year, the Transportation Planning Organization develops multiple lists of priority projects for a five year planning horizon. Staff will present the draft FY 2022 Priority Projects. Staff is requesting review, ranking, and approval of the priority projects list.*

**B. DRAFT FY 2016/2017-2020/2021 TRANSPORTATION IMPROVEMENT PROGRAM (TIP)**

*The Transportation Improvement Program (TIP) is a five-year planning document that tracks the funding and phasing of transportation projects. Staff is recommending approval of the TIP.*

**4. COMMENTS BY FDOT**

**5. COMMENTS BY TPO STAFF**

**6. COMMENTS BY CAC MEMBERS**

**7. PUBLIC COMMENT (Limited to 5 minutes)**

## 8. ADJOURNMENT

If reasonable accommodations are needed for you to participate in this meeting, please call the TPO Office at (352)629-8297 forty-eight (48) hours in advance, so arrangements can be made.

*The next regular meeting of the Citizens Advisory Committee will be held on  
**July 12, 2016.***



**June 9, 2016**

**TO: TAC/CAC Members**

**FROM: Kenneth Odom, Transportation Planner**

**RE: DRAFT FY 2022 Priority Projects**

---

The following pages contain a copy of the DRAFT FY 2022 Priority Projects. The overall order of the Priority Projects list has remained mostly unchanged from FY 2021 to FY 2022 because no additional projects have been identified for inclusion to the list. However, there have been additional funding/phase additions to the other projects as they progress towards construction. Please review the FY 2022 DRAFT Priority Projects list and be prepared to discuss the staff recommended order and any changes that you would suggest. Staff is requesting approval of the DRAFT 2022 Priority Project list for transmittal to the FDOT.

In addition to the FY 2022 DRAFT Priority Projects list, TPO staff is also requesting that the committee members review, recommend changes and approve the Off-System Priority and Trails Priority lists as well as review and approve the Central Florida Metropolitan Planning Organization Alliance's SIS and Trail Priorities lists.

If you have any questions regarding the rankings on any of the lists or a specific project please contact me in our office at (629-8297).

OCALA/MARION COUNTY TPO  
DRAFT FY 2022 PRIORITY PROJECTS

RANK	ROAD SEGMENT	ROADWAY DATA								Improvement	PRIORITY YEAR PHASE FY 2022	COMMENTS		
		Length	# of Lanes	LOS Standard	LOS Volume (Capacity)	2014 Traffic Count	Volume/ Capacity Ratio	LOS	SIS					
1	NW 49th Street Interchange <i>(FDOT FM# 435209-1)</i>	-	-	-	-	-	-	-	-	Yes	New Interchange	ROW/CST	Project Manager: Jazlyn Heywood MLOU Approved: 1/26/2015 Scheduled IJR Approval Date: June 2016 <i>Working with Marion County/FDOT to possibly expedite project schedule.</i>	
	<i>Funding Status</i> IJR to be funded by Marion County	<i>PHASE</i>	<i>FY 15/16</i>	<i>FY 16/17</i>	<i>FY 17/18</i>	<i>FY 18/19</i>	<i>FY 19/20</i>	<i>FY 20/21</i>						
		PD&E		\$2,030,000										
		PE						\$3,530,000						
2	SR 40/US 441 Intersection Op. Improvement I NW 2nd St to SW Broadway Street <i>(FDOT FM# 433661-1)</i>	0.16	6	D	50,000	36,000	72%			C	No	Add Dedicated Turn Lanes, Pedestrian Improvements & Enhanced Illumination	FULLY FUNDED	Project Manager: Todd Alexander Plans Complete:12/2016 <i>Fully funded.</i>
		<i>PHASE</i>	<i>FY 15/16</i>	<i>FY 16/17</i>	<i>FY 17/18</i>	<i>FY 18/19</i>	<i>FY 19/20</i>	<i>FY 20/21</i>						
		ROW				\$389,604	\$331,419							
		CST						\$1,520,979						
3	US 441 Intersection Op. Improvement II at SR 464 <i>(FDOT FM# 433660-1)</i>	NA	6	D	50,000	26,000	52%			C	No	Add Dedicated Turn Lanes and Pedestrian Improvements	CST	Project Manager: Todd Alexander Plans Complete:7/2016 <i>\$2,100,603 LRE</i>
		<i>PHASE</i>	<i>FY 15/16</i>	<i>FY 16/17</i>	<i>FY 17/18</i>	<i>FY 18/19</i>	<i>FY 19/20</i>	<i>FY 20/21</i>						
		ROW				\$668,224								
4	SR 35 Intersection Op. Improvement at SR 25, Foss Rd., & Robinson Rd. <i>(FDOT FM# 435208-1)</i>	NA	2	D	14,800	14,600	99%			D	No	Add SB Right-Turn Lanes	ROW/CST	Project Manager: Amir Asgarinik Wait for finalized scope to determine if ROW is necessary.
		<i>PHASE</i>	<i>FY 15/16</i>	<i>FY 16/17</i>	<i>FY 17/18</i>	<i>FY 18/19</i>	<i>FY 19/20</i>	<i>FY 20/21</i>						
		PE				\$1,005,000								
5	SR 40 Downtown Multi-Modal Improvement US 441 to NE 8th Avenue <i>(FDOT FM# 431935-1)</i>	0.63	4	D	32,400	31,000	96%			D	No	Pedestrian and Traffic Ops Improvements	CST	Project Manager: Matt Hassan
		<i>PHASE</i>	<i>FY 15/16</i>	<i>FY 16/17</i>	<i>FY 17/18</i>	<i>FY 18/19</i>	<i>FY 19/20</i>	<i>FY 20/21</i>						
		PE		\$953,633										
6	SR 40 East Multi-Modal Improvement NE 49th Terrace to NE 60th Court <i>(FDOT FM# 435490-1)</i>	1.5	4	D	32,400	21,000	65%			C	No	To Be Determined In Planning Study	PE	<i>Design estimate:</i>
7	SR 40 West Multi-Modal Improvement CSX Rail Bridge to I-75	2.8	4	D	32,400	28,000	86%			C	No	Sidewalk Widening & Reconditioning	PE	

IJR - Interchange Justification Report  
PD and E - Project Development Enviro Study  
PE - Preliminary Engineering  
ROW - Right-of-Way Acquisition  
CST - Construction

OCALA/MARION COUNTY TPO  
DRAFT FY 2022 PRIORITY PROJECTS

RANK	ROAD SEGMENT	ROADWAY DATA								Improvement	PRIORITY YEAR PHASE FY 2022	COMMENTS	
		Length	# of Lanes	LOS Standard	LOS Volume (Capacity)	2014 Traffic Count	Volume/Capacity Ratio	LOS	SIS				
8	US 41												
	SW 111TH PL LN to SR 40 (FDOT FM# 238648-1)	3.6	2	D	18,600	23,000	124%		D	No	Add 2 Lanes	FULLY FUNDED	Project Manager: Kathy Enot Plans Complete: 9/2013, Update: 4/2017
		<b>PHASE</b>	<b>FY 15/16</b>	<b>FY 16/17</b>	<b>FY 17/18</b>	<b>FY 18/19</b>	<b>FY 19/20</b>	<b>FY 20/21</b>					
		PE		\$700,000									
		ROW		\$5,591,911	\$4,994,318								
		CST				\$30,182,333							
9	SR 200												
	CR 484 to Citrus County Line (FDOT FM# 238651-1)	3.2	2	C	8,400	13,700	163%		F	No	Add 2 Lanes	CST	Project Manager: Naziru Isaac Plans Complete: 1/2017 Right of way complete <i>Estimate: \$34,465,223 (LRE 8/11/2015)</i>
		<b>PHASE</b>	<b>FY 15/16</b>	<b>FY 16/17</b>	<b>FY 17/18</b>	<b>FY 18/19</b>	<b>FY 19/20</b>	<b>FY 20/21</b>					
		ENV											
		PE											
10	SR 40/I-75 Interchange Operational Improvements												
	SW 40 <sup>th</sup> Avenue to SW 27 <sup>th</sup> Avenue (FDOT FM# 433652-1)	-	4	D	32,400	26,500	82%		D	Yes	Operations Improvements at I-75 interchange and at SW 27 <sup>th</sup> Ave intersection.	CST	Project Manager: Taleb Shams Plans complete: 5/2017 Right of way: FY 2018-2019
	<b>Funding Status</b>	<b>PHASE</b>	<b>FY 15/16</b>	<b>FY 16/17</b>	<b>FY 17/18</b>	<b>FY 18/19</b>	<b>FY 19/20</b>	<b>FY 20/21</b>					
		ROW			\$3,420,000	\$4,107,706							
11	CR 484/I-75 Interchange Operational Improvements												
	SW 20 <sup>th</sup> Avenue Road to CR 475A (FDOT FM# 433651-1 & -2 & -3)	-	4	D	32,400	26,400	81%		C	Yes	Operational/Capacity Improvements	ROW	Project Manager: Sarah Van Gundy Plans complete: 7/2017 <i>LF: \$4,393,910 (2nd ROW)</i>
		<b>PHASE</b>	<b>FY 15/16</b>	<b>FY 16/17</b>	<b>FY 17/18</b>	<b>FY 18/19</b>	<b>FY 19/20</b>	<b>FY 20/21</b>					
		PE	\$185,710										
		ROW						\$2,063,796					
		ROW						\$5,826,704					
12	NE 36 <sup>th</sup> Avenue												
	SR 492 to NE 35 <sup>th</sup> Street (FDOT FM# 431798-1) <i>PD&amp;E Underway</i> Project includes grade separation over CSX S line	1.6	2	D	14,040	10,700	76%		D	No	Add 2 Lanes	N/A	Project Manager: Jazlyn Heywood LDCA Scheduled Approval: 12/2015 Segment only for PD&E
		<b>PHASE</b>	<b>FY 15/16</b>	<b>FY 16/17</b>	<b>FY 17/18</b>	<b>FY 18/19</b>	<b>FY 19/20</b>	<b>FY 20/21</b>					
		PD&E	\$809,371										
	<b>Implementation Phases:</b>												
	SR 492 to NE 20 <sup>th</sup> Place (.4 miles) (FDOT FM# 431798-2)										Add 2 Lanes	ROW	Project Manager: Heather Johnstone Plans complete: 5/2017
		PE	\$826,782										
	(.4 miles) (FDOT FM# 431798-3) Project includes grade separation over CSX S line										Add 2 Lanes Rail Capacity Project	FULLY FUNDED	Project Manager: Heather Johnstone Plans complete: 5/2017
		PE	\$2,000,000										
		ROW		\$4,390,000	\$4,235,000	\$1,704,000	\$1,159,000	\$100,000					
		RRU				\$400,000							
		CST				\$10,416,986							
	(.8 miles) (FDOT FM# 431798-4)										Add 2 Lanes	ROW	Project Manager: Heather Johnstone Plans complete: 5/2017
		PE	\$1,006,774										

IJR - Interchange Justification Report  
PD and E - Project Development Enviro Study  
PE - Preliminary Engineering  
ROW - Right-of-Way Acquisition  
CST - Construction

OCALA/MARION COUNTY TPO  
DRAFT FY 2022 PRIORITY PROJECTS

RANK	ROAD SEGMENT	ROADWAY DATA								Improvement	PRIORITY YEAR PHASE FY 2022	COMMENTS		
		Length	# of Lanes	LOS Standard	LOS Volume (Capacity)	2014 Traffic Count	Volume/Capacity Ratio	LOS	SIS					
13	SR 40 - East													
	NE 60th Court to CR 314 (FDOT FM# 410674-2)	10.0	2	C	12,400	12,700	102%		E	Yes	Add 2 Lanes 2 bridge structures, from CR 326 to CR 314 concrete, wildlife crossings	FULLY FUNDED	Project Manager: Kathy Enot Includes Black Bear Scenic Trail Plans complete: 3/2017 LRE being updated	
	<i>Funding Status</i>	<i>PHASE</i>	<i>FY 15/16</i>	<i>FY 16/17</i>	<i>FY 17/18</i>	<i>FY 18/19</i>	<i>FY 19/20</i>	<i>FY 20/21</i>						
		ENV		\$1,163,794										
		PE			700,000									
		ROW		\$624,800	\$2,971,020	\$3,363,980	\$1,476,674							
		CST					\$96,252,064							
	CR 314 to CR 314A (FDOT FM# 410674-3)	5.8	2	C	8,400	11,200	FALSE			Yes	Add 2 Lanes	ROW	Project Manager: Kathy Enot Includes Black Bear Scenic Trail Plans complete: 2/2017 <i>Next phase right of way</i>	
	<i>Funding Status</i>	<i>PHASE</i>	<i>FY 15/16</i>	<i>FY 16/17</i>	<i>FY 17/18</i>	<i>FY 18/19</i>	<i>FY 19/20</i>	<i>FY 20/21</i>						
		ENV	\$539,070											
		PE	\$989,386											
	CR 314A to Levy Hammock Road (FDOT FM# 410674-4)	2.6	2	C	8,400	7,100	85%			Yes	Add 2 Lanes	PE	New Project Includes Black Bear Scenic Trail <i>Next phase design</i>	
14	SR 40													
	CR 328 to US 41 (FDOT FM# 238720-1)	9.8	2	C	16,400	12,700	77%		C	No	Add 2 Lanes	ROW	Project Manager: Kathy Enot Plans complete: 3/2010 <i>Next phase right of way</i>	
	<i>Funding Status</i>													
		Traffic count has been averaged												
15	US 27/I-75 Interchange Operational Improvements													
	NW 44th Avenue to NW 35th Avenue (FDOT FM# 433680-1)	-	4	D	39,800	21,000	53%		C	Yes	Operational/Capacity Improvements	PD&E	New Project	
	<i>Funding Status</i>	<i>PHASE</i>	<i>FY 15/16</i>	<i>FY 16/17</i>	<i>FY 17/18</i>	<i>FY 18/19</i>	<i>FY 19/20</i>	<i>FY 20/21</i>						
16	SW 95th Street Interchange (FDOT FM# 429582-1)	-	-	-	-	-	-	-	-	Yes	New Interchange	PD&E	New Project	
	<i>Funding Status</i>	<i>PHASE</i>	<i>FY 15/16</i>	<i>FY 16/17</i>	<i>FY 17/18</i>	<i>FY 18/19</i>	<i>FY 19/20</i>	<i>FY 20/21</i>						
		IJR is under review by FHWA												
17	NE 25th Avenue													
	SR 492 to NE 35th Street (FDOT FM# 431797-1)	1.6	2	D	14,040	8,400	60%		D	No	Add 2 Lanes	ROW	Project Manager: Naziru Isaac Plans complete: 10/2018	
	<i>Funding Status</i>	<i>PHASE</i>	<i>FY 15/16</i>	<i>FY 16/17</i>	<i>FY 17/18</i>	<i>FY 18/19</i>	<i>FY 19/20</i>	<i>FY 20/21</i>						
		PD&E	\$12,184											
		PE	\$1,934,917											
	<i>Project includes grade separation over CSX 'S' line</i>													

OCALA/MARION COUNTY TPO  
DRAFT FY 2022 PRIORITY PROJECTS

RANK	ROAD SEGMENT	ROADWAY DATA								Improvement	PRIORITY YEAR PHASE FY 2022	COMMENTS
		Length	# of Lanes	LOS Standard	LOS Volume (Capacity)	2014 Traffic Count	Volume/ Capacity Ratio	LOS	SIS			
18	US 27											
	NW 27th Ave. to NW 44th Ave.	1.8	4	D	37,900	18,000	47%	C	Yes	Add 2 Lanes	PE	New Project
	<i>Funding Status</i> (FDOT FM# 433633-1)											
19	SR 40											
	SW 60th Ave. to SW 27th Ave.	3.0	4	D	39,800	26,500	67%	C	No	Add 2 Lanes	PD&E	New Project
20	CR 484											
	CR 475A to Marion Oaks Course	2.7	4	D	29,160	26,400	91%	D	No	Add 2 Lanes	PE	New Project
21	US 441											
	CR 42 to Sumter County Line (FDOT FM# 238395-8)	2.0	4	D	39,800	32,300	81%	C	No	Add 2 Lanes	ROW	Project Manager: Ashraf Elmaghraby
22	US 301 - South											
	SE 143rd Place to CR 42 (FDOT FM# 411256-4)	2.00	2	D	24,200	13,900	57%	C	No	Add 2 Lanes	ROW	Project Manager: Marcus Lisicki 10/30/09 Plans complete
23	SR 326											
	US 441 to CR 200A (FIHS Facility)	2.3	2	D	16,800	10,500	63%	C	Yes	Add 2 Lanes	PE	New Project

Ocala/Marion County TPO  
Regional Trail Priorities  
FY 2016

Priority	Project	From	To	Length (mi)	Regional Trail	Phase	Phase Estimate	Notes
1	Pruitt Trail	Bridges Road	SR 200	9.5	HOF	CST	\$ 3,325,000	Design funded in FY 2015. DEP acquiring remaining necessary ROW.
2	Silver Springs Bikeway - Phase I	Baseline Paved Trail - North Trailhead	Silver Springs State Park	7.5	HOF	DES	\$ 225,000	Cross Florida Greenway. All ROW under DEP ownership.
3	Downtown Ocala Trail	Ocala City Hall	Silver Springs State Park	6	-	DES	\$ 180,000	
4	CR 484 - Pennsylvania Ave. Multi-Modal Improvements w/ Bridge	Blue Run Park	Mary Street	0.8	-	DES		Phase costs will be dependent upon selections made by Dunnellon City Council.
4	Indian Lake Trail	Silver Springs State Park	Indian Lake Trailhead	5	-	DES	\$ 155,000	Design funded in FY 2019.
5	Silver Springs Bikeway Phase II	Baseline Paved Trail - North Trailhead	CR 42	18.5	HOF	DES	\$ 555,000	Funded in FY 2016 - \$500K for PD&E. FDOT reviewing need for PD&E. May move directly into design. Majority of ROW owned by DEP and STJWMD. Potential to construct trail completely on public lands.
6	Belleview Greenway Trail	Lake Lillian Park	Cross Florida Greenway	5.3	-	DES	\$ 159,000	
7	Ocala National Forest Trail	Silver Springs State Park	Wildcat Lake Boat Ramp (1 mi. east of SR 19)	27	HOF	PD&E	\$ 750,000	FDOT reviewing need for PD&E.
8	Silver Springs to Hawthorne Trail	Silver Springs State Park		Approx. 30	-	PD&E	\$ 750,000	
<b>Funded Projects</b>								
	Land Bridge Gap	SR 200	SW 49th Avenue	8.25	HOF	DES/CST	\$ 3,300,000	Cross Florida Greenway. All ROW under DEP ownership. Includes underpass on CR 484.
	Santos West Gap	SW 49th Avenue	Santos Trail Head	7.4	HOF	DES/CST	\$ 2,200,000	Cross Florida Greenway. All ROW under DEP ownership.

CST - Construction

DEP - Department of Environmental Protection

DES - Design

HOF - Heart of Florida Loop

PD&E - Project Development & Environmental Study



Ocala/Marion County TPO  
Regional Trail Priorities  
FY 2015

ROW - Right-of-way

STJMMD - St. Johns Water Management District

Off-System Priorities

2022 OFF-SYSTEM PRIORITIES									
Priority	Project	From	To	Length (mi)	Agency	Project Type	Phase	Phase Estimate	Notes
1	SunTran Replacement Buses	-	-	-	SunTran	Transit	-	\$ 3,600,000	<u>Funded in FY 2019.</u> Replacement of 7 transit buses.
2	SW 49 <sup>th</sup> Avenue	SW 95th Street	Osceola Boulevard	4.1	MC	Capacity	CST	\$ 16,290,000	<u>Funded in FY 2019.</u> \$9.0M local funds, \$7.3 FDOT funds.
3	East Pennsylvania Avenue (CR 484) Bicycle Improvements	Rainbow River Bridge	US 41	0.8	City of Dunnellon	Bike Path	DES	\$ 75,000	Project to add bicycle path facilities and improved access to Blue Run Park.
4	Countywide ITS Operations & Maintenance	-	-	-	Ocala & MC	O/M	-	\$ 500,000	Annual allocation (\$250K each agency) for ITS Ops & Maintenance.
5	Sunset Harbor Road	@ US 301/441	-	-	MC	Traffic Ops	DES	\$ 150,000	Intersection operations improvements.

FULLY FUNDED (3-YEAR HORIZON)									
Priority	Project	From	To	Length (mi)	Agency	Project Type	Phase	Phase Estimate	Notes
A	SR 40 Stormwater Mitigation	NE 30 <sup>th</sup> Avenue	NE 7 <sup>th</sup> Street	0.25	Ocala	Stormwater	CST	\$ 3,000,000	<u>Funded in FY XXXX.</u> \$620K in local funds, \$2.39M in FDT funds. Project to eliminate periodic flooding on SR 40 near golf course and reduce nutrient load into Silver Springs. Limits are not exact. Construction is currently underway. Force main and new pond CST are at 60% completion
B	CR 42	SE 58th Avenue	650' West of CR 25	4.27	MC	Resurfacing	CST	\$ 2,404,000	Design estimated to be completed October 31, 2015.
C	SW 44 <sup>th</sup> Avenue	SR 200	SW 20th Street	1.7	Ocala	Capacity	CST	\$ 4,600,000	New 4-lane. On hold due to ROW acquisition issues
D	US 441 @ NW 100th Street	-	-	-	MC	Safety	DES/CST	\$ 2,156,250	Elimination of sight distance issues.
E	City of Ocala Sidewalks	Various locations			Ocala	Multi-modal	CST	\$ 767,000	NE 21 <sup>st</sup> , SE 24 <sup>th</sup> , SW 32 <sup>nd</sup> , Downtown,
F	Marion County Sidewalks	Various locations			MC	Multi-modal	CST	\$ 1,904,000	Legacy, Saddlewood, Marion Oaks
G	CR 200A	NE 35th Street	SR 326	2.7	MC	Resurfacing	CST	\$ 1,875,000	Design to be completed July 31, 2014
H	SW 20th Street	I-75	SR 200	1.1	Ocala	Capacity	DES	\$ 790,000	Expand existing 3-lane section to 4 lanes

## FY 2016-17 CFMPOA Regional Trail Priorities

DRAFT

Priorities Programmed Through Construction							
Trail Name	FM Number	Limits A	Limits B	Length (Miles)	Mega-Trails	Latest Project Phase Funded	MPO
Seminole Volusia Gap	436434-1	Wayside Park (Seminole County)	Spring to Spring Trail (Volusia County)	0.8	Heart of Florida: Coast to Coast	CST \$1,379,067 in FY 2017/18	River to Sea/Metroplan Orlando
South Lake Trail Phase 3B	422570-3	SR 33 (Crittenden St.)	Silver Eagle Road	1.0	Heart of Florida: Coast to Coast	Update of PD&E Study and Design underway - ROW 2017-19, CST 2020	Lake-Sumter
Clarcona-Ocoee Trail		West Orange Trail	Clarcona-Ocoee Road	0.2	Heart of Florida; Coast-to-Coast	Design programmed for 2015; ROW programmed for 2018; Construction programmed for 2020	MetroPlan Orlando
Land Bridge Gap	436358-1	SR 200	SW 49th Ave Trailhead	5.2	Heart of Florida	Design/build - FY 2016	Ocala/Marion
Santos Gap	436291-1	SW 49th Ave Trailhead	Santos Trailhead	9.0	Heart of Florida	Design/build - FY 2016	Ocala/Marion
Silver Springs Gap	435486-1	SE 64th Ave Trailhead	Silver Springs State Park	6.0	Heart of Florida	Design - FY 2016, Construction - FY 2018	Ocala/Marion
Halifax River Greenway		Beville Road	Wilder Blvd	0.5	River-to-Sea; East Coast Greenway	Construction funded in FY 2014/15	River to Sea
Halifax River Greenway		Beach Street	Riverfront Park	0.2	River-to-Sea; East Coast Greenway	Construction funded in FY 2014/15	River to Sea
East Central FL Rail Trail; Garden St Pedestrian Overpass	424040-6	Canaveral Avenue	Draa Road	0.6	River-to-Sea; Coast-to-Coast	Construction funded in FY 2014/15	Space Coast
East Central FL Rail Trail	424040-4	Kingman Road	Volusia County Line	12.8	River-to-Sea; Coast-to-Coast	Construction funded in FY 2014/15	Space Coast
South Lake Trail Phase 4	435893-1	Van Fleet Trail	CR 565A (Villa City Rd.)	8.4	Heart of Florida; Coast-to-Coast	Design Phase underway; ROW 2018-21, CST 2022	Lake-Sumter
Pruitt Gap				9.5	Heart of Florida	Design - FY 2016, Construction - FY 2021	Ocala/Marion
East Central FL Rail Trail	4154348	Guise Road	Gobblers Lodge	3.5	Coast to Coast; St. Johns River to Sea Loop	Construction funded in FY 2018/19 - \$4,083,500	River to Sea
Halifax River Greenway - Beach Street	4361391	Wilder Blvd	Shady Place	0.5	Coast to Coast; ECGA	Construction funded in FY 2018/19 - \$462,378	River to Sea
Halifax River Greenway - Donnelly Place	438983-1	Shady Place	Bellevue Ave.	0.3	Coast to Coast; ECGA	Construction funded in FY 2017/18 - \$191,425	River to Sea

## FY 2016-17 CFMPOA Regional Trail Priorities

DRAFT

Space Coast Trail	426187-1 436187-2	Canaveral Avenue	W. Max Brewer Bridge	1.9	River to Sea; Coast-to-Coast; East Coast Greenway	Downtown connector/ ECFRR1 to MINWR; Feasibility Study FY 2014/15 \$160,124; Construction FY 2020/21 \$1,707,000 but City of Titusville will build with local \$ in FY 2016/17; Fully funded through construction by City of Titusville	Space Coast
South Lake Trail Phase 3B		Silver Eagle	SR 33 (Crittengen St.)	2.1	Heart of Florida; Coast- to-Coast	ROW \$4.73 million CST \$2.0 million	Lake-Sumter

Total Mileage of Priorities Programmed	60.4
--	------

## FY 2016-17 CFMPOA Regional Trail Priorities

DRAFT

### Ranked Priorities

Priority	Trail Name	FM Number	Limits A	Limits B	Length (Miles)	Mega-Trails	SUNTrail Tier	Latest Project Phase Funded	Project Phase(s) Remaining Unfunded	Estimated Remaining Cost (Present Day)
1	Space Coast Trail	437343-1	Max Brewer Bridge East end	Merritt Island National Wildlife Refuge Entrance	1.9	River to Sea; Coast-to-Coast; East Coast Greenway	1	Downtown connector/ ECFRRT to MINWR; Feasibility Study FY 2014/15 \$160,124; Partial Design FY 2016/17	Partially funded through construction with FDOT resurfacing project	\$800,000
2	Spring to Spring Trail, Seg. 3a		Detroit Terrace	US 17/92	4.9	Heart of Florida; River to Sea	2	Design in FY 2017/18 - \$328,270	Construction	\$3,010,000
3A	Space Coast Trail	437093-1	Playalinda Rd West End / MINWR Entrance	Playalinda Rd East End	10.5	River to Sea; Coast-to-Coast; East Coast Greenway	1	\$450,000 PD&E FY 2015/16; \$802,660 Design FY 2017/18	Construction	\$10,500,000
3B	Space Coast Trail		Playalinda Road	US 1 (Volusia County)	12.9	River to Sea; East Coast Greenway	2		Construction	\$12,900,000
4	Silver Springs to Mount Dora		SE 64th Ave Trailhead	CR 42	16.6	Heart of Florida; Mt. Dora Bikeway	3	Trail in Marion County will be on existing public lands.	Design and construction	\$7,300,000
5	Pine Hills Trail Phase 3	436433-1	Clarcona-Ocoee Rd.	Seminole County Line	3.0	Heart of Florida; Coast-to-Coast	1	ROW and Design needed	\$1,090,000 for PD&E & design for 2014/15 from 2014 special allocation	\$9,948,000
6	South Sumter Connector	435471-1	Withlacoochee Trail	Van Fleet Trail	19.5	Heart of Florida; Coast-to-Coast	1	PD&E programmed for 2017, Design 2019	CST projected for 2023	\$16,705,923
7	West Orange Trail Phase 5a		Lester Road	Kelly Park	4.2	Heart of Florida; Mt. Dora Bikeway	None	ROW and design needed		\$7,800,000
8	South Lake Trail Phase 3C	427056-1	CR 565A (Villa City Rd.)	SR 33 (Crittenden St.)	1.1	Heart of Florida; Coast-to-Coast	1	Design Underway	ROW and CST - * tied to SR 50 Realignment	\$20,000,000

## FY 2016-17 CFMPOA Regional Trail Priorities

DRAFT

9	Space Coast Loop		US 1	Aurantia Rd/ECFRRT	9.4	River to Sea	2	North connector ECFRRT/KSC loop; no ROW or PD&E needed		\$3,200,000
10	Neighborhood Lakes Trail		Kelly Park	CR 435 in Orange Co.	3.7	Heart of Florida; Mt. Dora Bikeway	None	ROW and design needed		\$1,300,000
11	Wekiva Trail Segment 1		Tremain St.	CR 437	7.1	Heart of Florida; Mt. Dora Bikeway	None	PD&E Underway/ Design Funded in 2016	Design \$505,000, ROW \$5,000,000, CST \$4,000,000	\$9,000,505
12	Wekiva Trail Segment 2		CR 437	Red Tail Blvd.	2.7	Heart of Florida; Mt. Dora Bikeway	None	PD&E Underway/ Design Funded in 2016	Design \$155,000, ROW \$1,000,000, CST \$750,000	\$1,750,155
13	West Orange Trail Phase 5b		Rock Springs Road	Wekiva Springs SP entrance	2.8	Heart of Florida; Mt. Dora Bikeway	None	ROW and design needed	Spur off Heart-of- Florida loop to Wekiva State Park entrance	\$5,200,000
14	Clarcona-Ocoee Trail	436435-1	Pine Hills Trail	Hiawassee Road	1.5	Heart of Florida; Coast- to-Coast	1	Widening existing sidewalk to shared use path standards; ROW and design needed	\$530,000 for PD&E & design for 2014/15 from 2014 special allocation	\$4,371,600
Unranked	Black Bear Scenic Trail		Volusia County Line	Marion County Line	7.7	Heart of Florida	3	PD&E Funded in FY2020	Design, ROW & CST Phases needed	\$6,500,000
Unranked	Black Bear Scenic Trail		Volusia County Line	US 17	6.4	Heart of Florida	3	Study completed	Design, ROW & CST Phases needed	\$5,381,630
Unranked	Black Bear Scenic Trail	436360-1	Levy Hammock Road	Lake County Line	13.6	Heart of Florida	3	PD&E Funded in FY2020	Design, ROW & CST Phases needed	\$13,600,000
Unranked	East Coast Greenway/SR 528	407402-3	SR 524	SR 3	3.7	East Coast Greenway	3	Design funded in FY 2016/17 as part of two widening/ reconstruction design projects	CST phase needed in same FY as road widening/reconstruc tion of roadway	\$3,720,000
Unranked	East Coast Greenway/SR 528	407402-4	SR3	Port Canaveral	5.1	East Coast Greenway	3			\$5,090,000
Unranked	East Coast Greenway/US 1		SR 50	Grace Street	3.1	East Coast Greenway	3	Feasibility Study complete; FDOT corridor so no ROW needed	\$523,000 Design, \$3,100,000 CST Phases needed	\$3,623,000
Unranked	Lake Yale Loop Trail		Sabal Bluff Preserve	Marion County Line	11.7	Mt. Dora Bikeway	None	Study completed	Design, ROW & CST Phases needed	\$8,782,000
Unranked	Sabal Bluff Connector		Tav-Lee Trail	Sabal Bluff Preserve	0.5	Mt. Dora Bikeway	None	Study completed	Design, ROW & CST Phases needed	\$375,000

## FY 2016-17 CFMPOA Regional Trail Priorities

DRAFT

Unranked	Shingle Creek Trail	430225-1	Orange/Osceola Co. Line	US 192	5.0		3	Some segments completed; some programmed.	Alignment, design, ROW & CST	
Unranked	Shingle Creek Trail	430225-7	US 192	Kissimmee Lakefront Park	6.6		3	Some segments completed; some programmed.	Design, ROW & CST	
Unranked	Shingle Creek Trail	430225-2	Central Florida Parkway	Orange/Osceola Co. Line	4.8		3		Design, ROW & CST	\$8,300,000
Unranked	Space Coast Trail/US 1		SR 50	Grace Street	3.1	East Coast Greenway	3	Feasibility Study complete	Design, CST Phases needed	\$3,700,000
Unranked	Tav-Dora Trail		Tremain St	Wooten Park	8.3	Mt. Dora Bikeway	None	Study completed	Design, ROW & CST Phases needed	\$4,500,000
Unranked	Tav-Lee Trail Phase 2		Lakes Blvd.	Sleepy Hollow	3.9	Mt. Dora Bikeway	None	Study completed	Design, ROW & CST Phases needed	\$2,902,000
Unranked	US 17 Trail		Ponce DeLeon Blvd	SR 40	6.4	Heart of Florida; River-to-Sea	2	Design funded in FY 2014/15 & ROW funded in FY 2015/16 through 2019/20	To be constructed as part of road widening project	
					<b>Total Mileage of Priorities Programmed Through Construction</b>	<b>60.4</b>			<b>Total Priorities Programmed Through Construction</b>	<b>NA</b>
					<b>Total Mileage of Ranked Priorities</b>	<b>191.6</b>			<b>Total Estimated Remaining Costs of Ranked Priorities</b>	<b>\$180,259,813</b>
					<b>Total Mileage of All Priorities</b>	<b>252.0</b>				

## FY 2016-17 CFMPOA Regional Trail Priorities

DRAFT

Programmed Projects								
MPO	Trail Name	Limits A	Limits B	Mega-Trails	Status	Cost	Length	Notes
Lake-Sumter	South Lake Trail Phase 3A	West Beach, Clermont	Silver Eagle	Heart of Florida; Coast-to-Coast	Construction underway	\$2,800,000	3.10	Dec. 2014 completion date
Lake-Sumter	Tav-Lee Trail Extension	Wooten Park	Sinclair Ave.	Heart of Florida; Mt. Dora Bikeway	Programmed for CST 2017	\$659,198	1.00	Shovel ready
MetroPlan Orlando	Seminole-Wekiva Trail Phase 4	SR 436	Orange Co. line	Heart of Florida; Coast-to-Coast	Programmed for construction 9/2013	\$2,500,000	2.60	
Space Coast	East Central Regional Rail Trail	Draa Road	Kingman Road	River to Sea; Coast-to-Coast	Programmed for construction in 2013	\$1,500,000	1.4	Includes trailhead
Space Coast	East Central Regional Rail Trail	Glenn Road	Kingman Road	River to Sea; Coast-to-Coast	Programmed for construction in 2014	\$838,522	3.70	off road trail
Space Coast	East Central Regional Rail Trail	Draa Road	Canaveral Avenue	River to Sea; Coast-to-Coast	Programmed for construction in 2014	\$3,005,000	0.60	Includes overpass
River to Sea	Spring to Spring Trail, Seg. 3b	French Avenue	Detroit Terrace	River to Sea	Design/build contract approved by Volusia County Council on April 3, 2014	\$3,059,000	2.40	
River to Sea	East Central Regional Rail Trail	South of SR 442	Brevard Co. Line	River to Sea; Coast-to-Coast	Programmed for construction in 2015 & 2016	\$7,129,000	13.50	Includes \$3,700,000 in local funds.
River to Sea	East Central Regional Rail Trail	West side of SR 415	East side of SR 415	River to Sea; Coast-to-Coast	Construction underway	\$1,965,000	0.12	Overpass
River to Sea	East Central Regional Rail Trail	South side of SR 442	North side of SR 442	River to Sea; Coast-to-Coast	Construction underway	\$2,159,500	0.12	Overpass
River to Sea	East Central Regional Rail Trail	South side of SR 442	Dale Ave.	River to Sea; Coast-to-Coast	Advertised for construction	\$2,234,655	3.80	
River to Sea	East Central Regional Rail Trail	SR 415	Guise Road	River to Sea; Coast-to-Coast	Advertised for construction	\$1,390,000	2.58	
Lake-Sumter	Neighborhood Lakes Trail	SR 46	Orange Co. line	Heart of Florida; Mt. Dora Bikeway	PD&E Underway; design funded in 2014/15; ROW acquired, CST funded in 2018	\$2,547,160	2.20	Design \$247,160 (2015), CST \$2,300,000 (2018)
Ocala/Marion	Pruitt Trailhead Connection	Bridges Road	SR 200	Heart of Florida	Programmed for design/build in FY 2015	\$5,000,000	8.00	
River to Sea	East Central Regional Rail Trail	Gobblers Lodge	Maytown Spur	River to Sea; Coast-to-Coast	Programmed for construction in FY 2014/15	\$5,576,987	6.50	
River to Sea	East Central Regional Rail Trail	Guise Road	Gobblers Lodge	River to Sea; Coast-to-Coast	ROW underway; Programmed for construction in FY 2018/19	\$4,539,000	3.50	
Lake-Sumter	Wekiva Trail Segment 3	Red Tail Blvd.	Wekiva River	Heart of Florida; Mt. Dora Bikeway	Design underway	\$1,600,000	6.90	CST as part of Wekiva Parkway Segment 6 in 2017, ROW acquired
MetroPlan Orlando	Rinehart Road Path	CR 46A	SR 46	Heart of Florida; Coast-to-Coast	ROW acquired; design/build	\$554,000	0.88	
<b>Total Programmed</b>						<b>\$49,057,022</b>	<b>62.9</b>	



**CENTRAL FLORIDA MPO ALLIANCE**  
**FY 2016-2017 SIS HIGHWAY PROJECTS FOR PRIORITIZATION**  
**DRAFT**

Priority	FDOT Financial Management Number	Project Name or Designation	From	To	Length (Miles)	Work Description	Latest Project Phase Funded	Project Phase(s) Remaining Unfunded	Estimated Remaining Cost (Present-Day)	MPO/TPO
1	4269054	Ellis Rd Widening <sup>1</sup>	I-95 (John Rhodes Blvd)	Wickham Rd.	2.00	Widening 2 to 4 Lanes	ROW 2020-2023	CST	\$10,000,000	Space Coast TPO
2	4336521	I-75 Interchange Impr. at SR 40	SW 40th Avenue	---	1.25	Operations and capacity improvements	Design underway; ROW \$8M 2017/18-2018/19	CST	\$15,000,000	Ocala/Marion TPO
3a	2424847	I-4	S of SR 528/Beachline Expy.	W of SR 435/Kirkman Rd.	3.90	Ultimate Configuration for General Use & Managed Lanes	Partial PE 2015/16	ROW/CST	\$324,270,000	MetroPlan
3b	2424848	I-4	W of CR 532 (Polk/Osceola Line)	W of SR 528/Beachline Expy.	16.45	Ultimate Configuration for General Use & Managed Lanes	Partial PE 2015/16	ROW/CST	\$1,731,919,000	MetroPlan
4a	2425924	I-4	E of SR 434	Seminole/Volusia Co. Line	10.30	Ultimate Configuration for General Use & Managed Lanes	Partial PE 2015/16	ROW/CST	\$472,061,000	MetroPlan
4b	4084642	I-4	Volusia/Seminole Co. Line	SR 472	---	Ultimate Configuration for General Use & Managed Lanes	PE 2015/16	ROW/CST	\$469,736,000	River to Sea TPO
4c	2012103	I-4	W of US 27	W of CR 532 (Polk/Osceola Line)	---	Ultimate Configuration for General Use & Managed Lanes	PE 2015/16	ROW/CST	\$63,227,000	Polk TPO
5	4102511	SR 15 (US 17)	Ponce de Leon Blvd.	SR 40	---	Widen 2 to 4 lanes	ROW 2014/15	CST	\$40,000,000	River to Sea TPO
6	4371811 4074023 4074024	SR 528 (Turnpike) SR 528 <sup>2</sup> SR 528 <sup>2</sup>	W of I-95 SR 524 (Industry) SR 3	SR 524 (Industry) East of SR 3 Port Canaveral Interchange	4.30 3.70 5.10	Widen 4 to 6 lanes, New Indian River Bridge	PE PE PE	ROW/CST ROW/CST ROW/CST	\$91,271,658 \$421,924,750 \$269,405,898	Space Coast TPO
7	4289471	SR 40	Williamson Blvd.	Breakaway Trail	---	Widen 4 to 6 lanes	PD&E complete	ROW/CST	\$30,420,000	River to Sea TPO
8	2408371	SR 40	Cone Rd.	SR 11	---	Widen 2 to 4 lanes	ENV 2012/13	ROW/CST	\$43,800,000	River to Sea TPO
9	N/A	SR 25/US 27	CR 561 (west)	Florida's Turnpike (northern ramps)	2.14	Widen to 6 lanes	---	PD&E/PE/ ROW/CST	\$25,000,000	Lake-Sumter MPO
10	2408361	SR 40	SR 11	SR 15	---	Widen 2 to 4 lanes	PE 2013/14 ENV 2014/15	ROW/CST	\$38,000,000	River to Sea TPO
11	410674-3	SR 40	CR 314	CR 314A	6.1	Widen to 4 lanes w/ multi-use trail (Black Bear Scenic Trail)	DES underway	ROW/CST	\$93,000,000	Ocala/Marion TPO
12	410674-4	SR 40	CR 314A	Levy Hammock Road	2.8	Widen to 4 lanes w/ multi-use trail (Black Bear Scenic Trail)	-	DES/ROW/CST	\$35,000,000	Ocala/Marion TPO

<sup>1</sup>SIS Connector designation in FDOT Central Office for approval; <sup>2</sup>Top priority segment of SR 528 widening between SR 524 and Port Canaveral; I-4 Ultimate Configuration is noted as a PPP project.

**CENTRAL FLORIDA MPO ALLIANCE**  
**SIS HIGHWAY PROJECTS FOR PRIORITIZATION**  
**FUNDED FOR CONSTRUCTION**

Old Priority #	FDOT Financial Management Number	Project Name or Designation	From	To	Length (Miles)	Work Description	Latest Project Phase Funded	Project Phase(s) Remaining Unfunded	Estimated Remaining Cost (Present-Day)	MPO/TPO
1	2427152	I-95/I-4 Systems Interchange	---	---		Interchange upgrade	CST 2014/15	---	---	River to Sea TPO
3a	4269053	I-95/Ellis Road Interchange	---	---		New Interchange	CST 2016/17	---	---	Space Coast TPO
5	2384221	SR 25/US 27	Boggy Marsh Rd.	Lake Louisa Rd.	6.70	Widen to 6 lanes	CST 2015/16	---	---	Lake-Sumter
10	4106742	SR 40	SR 35	CR 314	4.5	Widen 2 to 4 lanes	CST 2019/2020	---	---	Ocala/Marion TPO

NOTE: Although funded for construction, projects will continue to be shown until construction starts.



June 9, 2016

**TO: TAC/CAC Members**

**FROM: Kenneth Odom, Transportation Planner**

**RE: DRAFT FY 2016/2017-2020/2021 TRANSPORTATION IMPROVEMENT PROGRAM**

---

Attached is the 'Draft' 2016/2017 – 2020/2021 Transportation Improvement Program (TIP) for your review. This document has been prepared from the latest draft of the Florida Department of Transportation's Tentative Work Program.

Notable changes include:

- **435057-1:** I-75 at CR 484, SR 326 & CR 318 – Enhance illumination (Add \$ 2.0 Million CST (FY 2016/2017))
- **435209-1:** I-75 Interchange at NW 49<sup>th</sup> St – Add \$3.5 Million PE (FY2020/2021)
- **435659-2:** I-75 Interchange at SR 200 – Add ramp turn lanes (Project advanced two years to 2017/2018)
- **435547-1:** SW 44<sup>th</sup> Ave from SR 200 to SW 32<sup>nd</sup> St – New 4-lane (Add \$4.4 Million CST (FY 2018/2019))
- **4437339-1:** US 27 from CR 326 to Levy CL – Resurfacing (Add \$7.6 Million CST (FY 2018/2019))
- **436755-1:** Indian Lakes State Trail – Add \$155K PE (FY 2018/2019)
- **436474-3:** Legacy Elementary Sidewalks – Add \$1.4 Million CST (FY 2017/2018)
- **436474-2:** Saddlewood Elementary Sidewalks – Add \$317K CST (FY 2017/2018)

TPO staff will present these, and additional, changes to committee members at the June 14<sup>th</sup> meeting. TPO staff is requesting approval of the projects and their associated tables within the 'Draft' TIP.

If you have any questions regarding the TIP or any of the projects included, please feel free to contact the TPO staff at 629-8297.

*Cooperative and comprehensive planning for our transportation needs*  
Marion County • City of Belleview • City of Dunnellon • City of Ocala

---

121 S.E. Watula Avenue • Ocala, Florida 34471  
Telephone: (352) 629-8297 • Fax: (352) 629-8240 • [www.ocalamariontpo.org](http://www.ocalamariontpo.org)

# **OCALA / MARION COUNTY TPO**

**Transportation Improvement Program  
FY 2016/17 - 2020/21**

**OCALA/MARION COUNTY TRANSPORTATION  
IMPROVEMENT PROGRAM (2016/2017-2020/2021) (April 1,**

## Table of Contents

- Executive Summary
- 5 Year Summary by Fund Code
- Funding Source Summary
- Section 1 - Federal / State Projects
- Section 2 - TPO Funding
- Section 3 - Countywide
- Section 4 - Bike / Ped Projects
- Section 5 - Aviation Projects
- Section 6 - Transit Projects

**Ocala/Marion County Transportation Planning Organization**

121 S.E. Watula Avenue  
P.O. Box 1270  
Ocala, Florida 34478-1270  
(352) 629-8297

Brent Malaver, **Chairman**  
Ocala City Council

David Moore, **Vice Chair**  
Marion County Commission

Kent Guinn  
City of Ocala, Mayor

Kathy Bryant  
Marion County Commission

Jay Musleh  
Ocala City Council

Mary Sue Rich  
Ocala City Council

Earl Arnett  
Marion County Commission

Stan McClain  
Marion County Commission

Michael Goldman  
Bellevue City Commission

Matthew Wardell  
Ocala City Council

James P. Hilty  
Ocala City Council

Rick Hancock  
Dunnellon City Council

Carl Zalak  
Marion County Commission

**STAFF**

Greg Slay  
Director

John Voges  
Senior Transportation Planner

Kenneth Odom  
Transportation Planner

Anne McGaffic  
GIS Analyst

Shakayla Jacobs, Administrative Assistant

Administrative Assistant

**GLOSSARY OF ABBREVIATIONS**

CAC	-	Citizen's Advisory Committee
CFR	-	Code of Federal Regulations
CTD	-	Commission for the Transportation Disadvantaged
DCA	-	Department of Community Affairs
DEP	-	Department of Environmental Protection
EPA	-	Environmental Protection Agency
FAA	-	Federal Aviation Administration
FDOT	-	Florida Department of Transportation
FHWA	-	Federal Highway Administration
FTA	-	Federal Transit Administration
FSUTMS	-	Florida Standard Urban Transportation Modeling Structure
ISTEA	-	Intermodal Surface Transportation Efficiency Act of 1991
JPA	-	Joint Participation Agreement
TPO	-	Metropolitan Planning Organization
NHS	-	National Highway System
PL112	-	Planning 112, federal funds provided for the administration of the TPO

RPC	-	Regional Planning Council
STP	-	Surface Transportation Program
TAC	-	Technical Advisory Committee
TDLCB	-	Transportation Disadvantaged Local Coordinating Board
TDP	-	Transit Development Plan
TDTF	-	Transportation Disadvantaged Trust Funds
MAP-21	-	Moving Ahead for Progress in the 21 <sup>st</sup> Century
TIP	-	Transportation Improvement Program
TMA	-	Transportation Management Area (TPO's with a population >200,000)
UPWP	-	Unified Planning Work Program
USC	-	United States Code

## **EXECUTIVE SUMMARY**

### **PURPOSE**

The Ocala/Marion County TPO's Transportation Improvement Program (TIP) documents the anticipated timing and cost of regional transportation improvements for a period of five years. It is a program that serves as the budget for carrying out the adopted Year 2040 Long Range Transportation Plan. In July 1989, the Florida Legislature passed Senate Bill 1474 which revamped the TIP process in order to provide a more responsive and comprehensive method of developing the annual Florida Department of Transportation (FDOT) budget. This TIP represents the federal *Moving Ahead for Progress in the 21<sup>st</sup> Century (MAP-21)* requirements according to (23 USC 134 (j)) and the state requirement of Florida Statute 339.175 (7). All sections and elements of this document are financially feasible as demonstrated through the TIP implementation schedule with corresponding committed public resources expected to carry out the plan pursuant to (23 USC 135 (g)(4)(D)(ii) and Title 49 CFR, Part 316. The TIP must include federal and state funded projects as well as turnpike, airport, and transit work items.

### **Federal and State Funded Highway Projects**

This chapter contains project descriptions for the FDOT District Five 2016/2017 - 2020/2021 Tentative Work Program for federal and state road, enhancement, intersection, and railroad improvement projects. These projects are funded with National Highway System funds, Surface Transportation Program funds,

or State Trust funds and are developed by the FDOT based on TPO recommended priorities. Under state law the annually updated TIP shall consist of the state's first year funded improvements and the recommended subsequent four state fiscal years for advancement. This five-year schedule of federal and state projects begins on page 1-1. It is inclusive of the federally funded first three years and consistent with the Department's Tentative Work Program.

### **Public Transportation Element**

On April 15, 1997, the City of Ocala and Marion County signed an inter-local agreement for the development of a fixed route transit system in Ocala, named SunTran. By December 1998, SunTran had purchased vehicles, established a route network, and contracted with a management company to establish a fixed route transit system and complementary paratransit system in Ocala and Marion County. On December 15, 1998 SunTran began service to the community. Within weeks SunTran had surpassed its six-month ridership goals. SunTran currently operates a fleet of nine vehicles on six routes. Daily ridership currently averages 1,428 passengers per weekday.

The City and County have an agreement with the TPO to oversee the transit service and to serve as the policy board for SunTran. The TPO staff operates as SunTran's administrative staff and includes a Senior Planner whose responsibilities include overseeing the contracted transit services and managing the FTA grant process. The TPO contracts with McDonald Transit Associates, Incorporated (MTA), which directly operates and maintains the fixed-route buses. MTA subcontracts for ADA



paratransit services with Marion Transit Services, the local Community Transportation Coordinator under the Florida Transportation Disadvantaged Program. This arrangement has proved to provide a complete, comprehensive and cost effective transportation system for the citizens of Ocala and Marion County.

The SunTran service consists of six routes. In downtown Ocala, five of the six routes meet at the Central Transfer Station and provide service to Ocala. The Central Transfer Station is a multi-modal terminal providing connections to Greyhound services and formerly to AMTRAK. The sixth route operates from southeast Ocala to the community of Silver Springs Shores. A transfer station located at the Marion County Public Health Unit provides access to the downtown routes from this route. SunTran's routes were developed to provide the greatest access for passengers to local hospitals, major employers, shopping sites, medical offices, schools and housing opportunities. Service operates from approximately 5:00 a.m. to 10:00 p.m. Monday through Saturday.

The basic adult fare for SunTran is \$1.50. A reduced fare of \$0.75 is offered throughout the day for seniors, persons with disabilities, and persons with Medicare cards as well as retired and active duty military. Youth and students pay \$1.10. Children five years of age or lower ride free. SunTran also has discounted monthly passes for all categories of passengers. Fares for Marion Transit Service paratransit services are \$2.00. (OIT)

The National Transit Database Report for FY 2015 showed that SunTran provided 31,505 revenue hours and 492,050 revenue miles of service to 417,920 unlinked passengers. Total annual operating expenses for the period were \$1.725 million.

Also included in this Element are funds provided to Marion Transit Services for the provision of transportation services under the Transportation Disadvantaged Program. The State of Florida Commission for the Transportation Disadvantaged provides grants to the TPO and to Marion Transit Services, as the CTC. Marion Transit Services was selected as the CTC for Marion County by the Ocala/Marion County Transportation Disadvantaged Local Coordinating Board and the TPO. The funds provided to the TPO are earmarked for planning functions.

The funds provided to Marion Transit Services are earmarked for the purchase of non-sponsored trips and equipment. Non-sponsored trips are for any transportation disadvantaged individual that are not covered in whole or part by any other social service agency. Services provided under this program are coordinated by the CTC to increase efficiency as well as to reduce duplication of services.

### **Aviation Element**

The TIP's Aviation Element addresses the next five years of scheduled FDOT programmed improvements to the Ocala Regional Airport and the Dunnellon/Marion County Airport. The FAA and FDOT are currently involved in numerous planned improvements for both of these regionally significant airports. The FAA general aviation terminal study forecasts that Marion County will experience rapid aviation growth over the next several years.

## **FINANCIAL PLAN**

The Ocala/Marion County TIP is financially constrained each fiscal year. All federal and state funded projects can be implemented using current or projected revenue sources. The summary tables on pages 1-1 through 6-4 identify, by funding source, the projects scheduled by fiscal year. These tables correspond to funding available in the FDOT Tentative Five-Year Work Program, demonstrating the document's financial feasibility.

## **PROJECT SELECTION PROCESS**

The project selection process is carried out annually by the TPO in accordance with federal requirements (23 C.F.R. 450.324(c)). This requires the Ocala/Marion County TPO to complete its project selection with the support and cooperation of the FDOT District Planning Office in conformance with the TIP process. When a project in the TPO planning area has been identified as a potential project, the TPO requests that FDOT and the FHWA actively pursue the appropriate funding.

The FDOT shall give priority to those projects that are:

1. Designed to maximize safe and efficient travel;
2. Identified in approved local government comprehensive plans to receive local matching funds in accordance with the provisions of Section 335.20 or to be funded pursuant to the

provisions of Section 339.12;

3. Within transportation corridors protected by local government action;
4. Used in the operation of or in conjunction with public transportation facilities; and
5. Located within the boundaries of a local government which has made a responsible effort to fund improvements needed to accommodate local traffic.

This document translates the local elected government officials' priorities for transportation improvements from the planning level to the actual project development level. The TIP is updated annually to ensure that these priorities are always current with the desires of the members of the local governments.

### **Amendments to or Removals from Transportation Improvement Program**

The existing federally approved TIP can be modified at any time when there is a joint agreement between the TPO and FDOT. Modification of a current TIP may require amendment to the FDOT Adopted Work Program. The district may amend the Adopted Work Program based on projects that require mid-year rescheduling, however; any project change requires joint action by the TPO and the FDOT.

Therefore, the TPO may not remove or reschedule any local City,

County, or City/County funded level of service project from the current TIP to a subsequent TIP without an amendment. However if a locally funded project is a non-level of service requirement, the TPO may unilaterally add, remove, or reschedule any project to the TIP.

Action by the District Secretary is required for all joint TIP amendments that involves the FDOT Adopted Work Program that is to be advanced, deleted, or rescheduled pursuant to the following provisions of paragraph 339.135(7) (c), F.S.:

- (a) The change adds new individual projects;
- (b) The change adversely impacts financial constraint;
- (c) The change results in major scope changes;
- (d) The change deletes and individually listed project from the TIP/STIP; or
- (e) The change results in a cost increase greater than 20% AND \$2 million.

### **CONSISTENCY WITH OTHER PLANS**

The TIP shall be consistent, to the maximum extent possible, with the approved local government comprehensive plans of the governments within the TPO area. The TPO must indicate any

state and federal projects that are not consistent with the comprehensive plans to ensure the TIP's consistency with all applicable federal laws, rules, regulations and guidance available pursuant to (23 USC 134 (h) and (I) ).

After the TPO adopts the TIP, it transmits copies to the FDOT District, FAA, EPA, DEO, RPC, State Clearinghouse, Regional Clearinghouse, FTA, Florida Energy Office, and to each Marion County Legislator for review prior to the final submission date. The FDOT District staff sends copies of TIP to FHWA and FDOT Central Office for review of the TIP against the Tentative Work Program and notes any discrepancies for use in preparing the next district work program. The DCA shall notify the TPO of any transportation projects in the TIP that are inconsistent with approved local comprehensive plans per Florida Statute 339.175 (10).

### **Administrative Amendments**

In the event a TIP amendment is needed prior to a regularly scheduled TPO meeting, the TPO Director is authorized, per the TIP adoption resolution, to perform an administrative TIP amendment. Any administrative amendment is placed on the next TPO agenda for ratification at that meeting.

### **PROJECT PRIORITY SELECTION PROCESS**

In November of 2015 the TPO adopted the Year 2040 Long-Range Transportation Plan. This Plan has two components, the Needs Plan and the Cost Feasible Plan. The first portion of the

plan, the Needs Plan, identified the deficient roadway corridors based upon population, employment and land use projections. The Cost Feasible Plan was developed by prioritizing these deficient corridors based upon the improvement's overall benefit to the highway network as well as available revenues.

The TPO staff evaluates all eligible priority projects based on FDOT and TPO policies. This evaluation includes an objective and technical review of each priority based on the road's level of service, physical condition, facility type, benefit to highway network, construction cost, and scheduled work program phase.

In addition to the process above, the TPO's advisory committees will consider the following factors in the final determination:

1. Support the economic vitality of the metropolitan area, especially by enabling global competitiveness, productivity, and efficiency;
2. Increase the safety and security of the transportation system for motorized and non-motorized users;
3. Increase the accessibility and mobility options available to people and freight;
4. Protect and enhance the environment, promote energy conservation, and improve quality of life;
5. Enhance the integration and connectivity of the transportation system, across and between modes, for people and freight;

6. Promote efficient system management and operation; and
7. Emphasize the preservation of the existing transportation system.

After the CAC and TAC have prepared their priority recommendation, the TPO Board will review the committee's recommendations for the final TPO adopted Federal and State Priorities. This recommendation will be transmitted to FDOT for the development of the next FDOT Tentative Work Program for Marion County.

# **INSERT PRIORITY PROJECTS**

# **INSERT PRIORITY PROJECTS**

# **INSERT PRIORITY PROJECTS**

## **PUBLIC INVOLVEMENT**

The Ocala/Marion County TPO strives to involve the public in all phases of the planning process, from the development of the long-range plans to the review of PD&E documents. Public information meetings and hearings are conducted for all FDOT projects throughout the PD&E process to enhance public awareness. Notices of the public information meetings and hearings are mailed to all affected property owners and published in local newspapers. The TIP is also reviewed and approved through a two-stage process wherein the TPO Citizen and Technical Advisory Committees comprise the first stage and the TPO Board offers reviews and offers final approval in the second stage. The draft document is made available to the public through the committee and board meeting notifications posted on the TPO website prior to the committee review and through the TPO Board review. Once the document is approved by the TPO Board, it is posted on the TPO website. A physical copy of the

document is also available to any citizen who requests one. In addition, all meetings of the TPO, CAC and TAC are conducted in accordance with the Sunshine Law, Chapter 286, Florida Statute. The TPO updates and adopts a formal Public Involvement Plan in accordance with 23 USC 450.316(b)(1) of March 28, 1995.

## **CERTIFICATION**

The most recent certification review was conducted by the Florida Department of Transportation in January, 2016. The Department recommended that the urban transportation planning process be certified for fiscal year 2016/2017. The next certification review will be performed in the spring of 2017.



## LEGENDS

This section contains an explanation of legends, abbreviations, funding and phase codes, acronyms and environmental codes used within the text.

**Phase Codes** - Abbreviations used for project phase information for the appropriate transportation project are given in the following table.

<u>Code</u>	<u>Project Phase Information</u>
ADM	Administration
CEI	Construction Engineering Inspection
CRT MNT	Contract Routine Maintenance
CST	Construction
CAP	Capital
DES	Design
ENG	Engineering
ENV CON	Environmental/Conservation
INC	Construction Incentive/Bonus
MNT	Maintenance
MSC	Miscellaneous Construction
OPS	Operations
PD&E	Project Development & Environmental Study
PE	Preliminary Engineering
PLEMO	Planning and Environmental Offices Study
PLN	In House Planning
PST DES	Post Design
R/R CST	Railroad Construction
RELOC	Relocation

ROW	Rights-of-Way Support & Acquisition
RRU	Railroad & Utilities
RT MNT	Routine Maintenance
UTIL	Utilities Construction

**Funding Source Codes** - Abbreviations used for each funding source within the project chart section are given in the following table.

**FEDERAL FUNDING TYPES**

<u>Funding Code</u>	<u>Source</u>	<u>Fund Description</u>
<b><u>NATIONAL HIGHWAY SYSTEM</u></b>		
ACNH, NH	75% Federal	On any eligible National Highway System Project.
I	85% Federal	Interstate Resurfacing, Rehabilitating, & Reconstruction on the approved Federal Interstate System.
IM	85% Federal	Interstate Maintenance.
<b><u>SURFACE TRANSPORTATION PROGRAM</u></b>		
SU	75% Federal	Urban Area Funds. These funds must be used in areas with a population of over 200,000. Consists of Surface Transportation Program (STP) funds, Minimum Allocation Funds, and Donor Bonus Funds.
SL	75% Federal	Non-Urban Area Funds. These funds must be used in areas with a population of 200,000 or less. Consists of STP funds, Minimum Allocation Funds, and Donor Bonus Funds.
SA	75% Federal	Any Area Funds. These funds may be used in any area of the State on Federal-Aid Roads. There are no restrictions as to population area. Consists of STP funds, Minimum Allocation Funds, and Donor Bonus Funds.

<u>Funding Code</u>	<u>Source</u>	<u>Fund Description</u>
SN	100% Federal	Mandatory Rural Funds. This fund must be used exclusively in rural areas with populations of 5,000 or less. Consists of STP funds.
SE	100% Federal	Transportation Enhancements. 10% set aside of STP funds for Transportation Enhancement activities. There are no geographic location restrictions.
MG	75% Federal	Minimum Guarantee – ensures each state will be guaranteed a percent of apportionment, which is at least 90.5% of the state percent contributions to the Highway Trust Fund in the previous year.
PLH	100% Federal	Available for projects on unappropriated or unreserved public land.

#### SAFETY CONSTRUCTION ACTIVITIES

SH	85% Federal	High Hazard Elimination.
SS	85% Federal	Any Safety Improvement, Railroad-Highway Crossings, & Hazard Elimination Program.
SR	85% Federal	Railroad Hazard Elimination.
SP	85% Federal	Railroad Protection Devices.

#### BRIDGE REPLACEMENT PROGRAM

BRT	73% Federal	Bridge Replacement and Rehabilitation on the Federal System
-----	-------------	---

plus 15% of this allocation must be spent off the Federal System as required by the 1978 Highway Act.

<u>Funding Code</u>	<u>Source</u>	<u>Fund Description</u>
BRTZ	73% Federal	Bridge Replacement and Rehabilitation off the Federal System.
BRTD	73% Federal	Discretionary Bridge Replacement and Rehabilitation on the Federal System with construction cost in excess of 10 million.

OTHER FEDERAL ACTIVITIES

ARRA	100% Federal	American Recovery & Reinvestment Act
CM	75% Federal	Congestion Mitigation
HP	80% Federal	Highway Planning
HR	75% Federal	Highway Research
PL	100% Federal	Metropolitan Planning
HPP	100% Federal	High-Priority Project – SAFETELU Appropriation
SR2S	100% Federal	Safe Route to School (ROW acquisition funding under this program)

On non-state facilities, local government will 50/50 split with FDOT on the remaining 25% balance.

**STATE OF FLORIDA FUNDING**

<u>Funding Code</u>	<u>Source</u>	<u>Fund Description</u>
BNDS	Bonds	
BRRP	100% State	Bridge Repair and Rehabilitation Program.
BRP	100% State	Bridge Replacement
CIGP	50% State	County Incentive Grant Program offers 50/50 county/state match.
D	100% State	
DDR	100% State	District Dedicated Revenue
DIH	100% State	District In-House
DPE	100% State	For Preliminary Engineering (PE) and Construction Engineering Inspection (CEI) on all state funded projects and certain federal-aid projects which qualify.
DPTO	100% State	Aviation, Transit, and Rail
DS	100% State	Primary funds for use on the state highway system for new construction, preservation, traffic operations type projects, and right-of-way acquisitions.
DSB	100% State	Primary - Reimbursed by bonds

DSL	100% State	Local Government Cooperative Assistance Program for transportation projects which meet both local and state transportation needs that call for construction, reconstruction, or expansion of any state, county, or city road which would improve traffic flow and reduce congestion on the state system.
<u>Funding Code</u>	<u>Source</u>	<u>Fund Description</u>
DU	100% Federal	Pass-thru funds administered by FDOT.
FCO	100% State	Fixed Capital Outlay for purchase, construction or improvement to FDOT real property.
FTA	100% Federal	Federal Transit Administration
LF	100% Local	Funds from sources other than state or federal.
TDTF	90% State	Transportation Disadvantaged Trust Fund
PKYI	100% State	Parkway Improvement Funds for roadway construction, building construction, and other necessary improvements.
PKYF	100% Tnpk	For use on feeder roads to the turnpike.
PKYR	100% State	Parkway Maintenance Funds for roadway maintenance, building and other necessary maintenance.
TRIP	50% State	Transportation Regional Incentive Program (Requires a 50/50 match with local funds)

### 5-Year Summary of Projects by Funding Category

Project #	Project Name	2016/17	2017/18	2018/19	2019/20	2020/21	Total
<b>ACNP - ADVANCE CONSTRUCTION NHPP</b>							
4106742	SR 40	0	0	0	96,113,995	0	96,113,995
4306431	I-75	0	0	0	0	0	33,386,198
4356592	SR 200	0	4,433,733	0	0	0	5,183,733
4356602	SR 326	10,000	162,999	30,000	806,859	0	1,408,612
<b>Total</b>		<b>10,000</b>	<b>4,596,732</b>	<b>30,000</b>	<b>96,920,854</b>	<b>0</b>	<b>136,092,538</b>
<b>ACSA - ADVANCE CONSTRUCTION (SA)</b>							
4272801	US 441	0	0	0	0	0	20,540
4317971	NE 25TH AVENUE	0	0	0	0	0	431,000
4356602	SR 326	0	0	0	0	0	20,000
4363581	LAND BRIDGE TRAIL	0	0	0	0	0	55,000
<b>Total</b>		<b>0</b>	<b>0</b>	<b>0</b>	<b>0</b>	<b>0</b>	<b>526,540</b>
<b>ACSL - ADVANCE CONSTRUCTION (SL)</b>							
4106742	SR 40	0	0	0	0	0	1,166,654
4241861	SE 92ND LOOP (BELLEVIEW BELTWAY)	0	0	0	0	0	2,032,651
4302521	OCALA/MARION COUNTY ITS	0	0	0	0	0	4,000,000
4317971	NE 25TH AVENUE	0	0	0	0	0	36,155
4354921	SR 40	0	0	0	0	0	150,000
4361861	SW 80TH AVENUE	0	0	0	0	0	23,000
4362911	SANTOS GAP TRAIL	0	0	0	0	0	900,000
<b>Total</b>		<b>0</b>	<b>0</b>	<b>0</b>	<b>0</b>	<b>0</b>	<b>8,308,460</b>
<b>ACSN - ADVANCE CONSTRUCTION (SN)</b>							
2386481	US 41	0	0	0	0	0	83,249
4106742	SR 40	1,163,794	0	0	0	0	1,163,794
<b>Total</b>		<b>1,163,794</b>	<b>0</b>	<b>0</b>	<b>0</b>	<b>0</b>	<b>1,247,043</b>



### 5-Year Summary of Projects by Funding Category

Project #	Project Name	2016/17	2017/18	2018/19	2019/20	2020/21	Total
<b>ACTL - ADVANCE CONSTRUCTION TALL</b>							
4362911	SANTOS GAP TRAIL	0	0	0	0	0	500,000
<b>Total</b>		<b>0</b>	<b>0</b>	<b>0</b>	<b>0</b>	<b>0</b>	<b>500,000</b>
<b>BNDS - BOND - STATE</b>							
2386511	SR 200	0	0	0	0	0	251,979
<b>Total</b>		<b>0</b>	<b>0</b>	<b>0</b>	<b>0</b>	<b>0</b>	<b>251,979</b>
<b>BRRP - STATE BRIDGE REPAIR &amp; REHAB</b>							
4293631	SR 40	0	0	0	0	0	519,480
<b>Total</b>		<b>0</b>	<b>0</b>	<b>0</b>	<b>0</b>	<b>0</b>	<b>519,480</b>
<b>CIGP - COUNTY INCENTIVE GRANT PROGRAM</b>							
4355491	SW 49TH AVENUE	0	0	7,400,221	0	0	7,400,221
<b>Total</b>		<b>0</b>	<b>0</b>	<b>7,400,221</b>	<b>0</b>	<b>0</b>	<b>7,400,221</b>
<b>CM - CONGESTION MITIGATION - AQ</b>							
2386481	US 41	0	0	239,547	0	0	239,547
<b>Total</b>		<b>0</b>	<b>0</b>	<b>239,547</b>	<b>0</b>	<b>0</b>	<b>239,547</b>
<b>D - UNRESTRICTED STATE PRIMARY</b>							
4136153	LIGHTING AGREEMENTS	342,672	352,955	363,344	374,456	385,691	1,819,118
4181071	PRIMARY IN HOUSE	1,727,867	1,723,360	1,717,734	1,717,734	1,781,973	34,455,503
4233912	ASPHALT RESURFACING	679,000	0	0	0	0	2,172,160
4278392	PERFORMANCE AESTHETICS	517,000	517,000	1,498,500	740,000	740,000	6,290,000
4291781	UNPAVED SHOULDER REPAIR	743,095	0	0	0	0	1,301,947
4291821	PAVEMENT MARKINGS -	600,000	600,000	600,000	600,000	0	5,242,200
<b>Total</b>		<b>4,609,634</b>	<b>3,193,315</b>	<b>4,179,578</b>	<b>3,432,190</b>	<b>2,907,664</b>	<b>51,280,928</b>
<b>DC - STATE PRIMARY PE CONSULTANTS</b>							
2386771	SR 35	0	0	0	0	0	89

### 5-Year Summary of Projects by Funding Category

Project #	Project Name	2016/17	2017/18	2018/19	2019/20	2020/21	Total
<b>DC - STATE PRIMARY PE CONSULTANTS</b>							
<b>Total</b>		<b>0</b>	<b>0</b>	<b>0</b>	<b>0</b>	<b>0</b>	<b>89</b>
<b>DDR - DISTRICT DEDICATED REVENUE</b>							
2386481	US 41	6,338,310	4,492,419	32,417,738	0	0	52,234,664
2386511	SR 200	0	0	0	0	0	412,820
2386782	US 27	0	0	0	0	0	566,804
2386931	SR 35	0	906,144	0	0	0	2,755,700
2387191	SR 40	160,000	0	0	0	0	8,140,511
2387201	SR 40	0	0	0	0	0	3,886,003
4106742	SR 40	0	0	2,944,061	0	0	3,440,267
4130194	TRAFFIC SIGNALIZATION	350,493	358,335	351,548	351,548	0	4,229,316
4136153	LIGHTING AGREEMENTS	0	0	0	0	0	3,169,387
4242831	US 441	0	0	0	0	0	449,480
4248851	SR 35	0	0	0	0	0	263,898
4272491	US 301	0	0	0	0	0	70,958
4272801	US 441	0	0	0	0	0	1,804,523
4290531	US 27	0	0	0	0	0	199,776
4290831	US 27	0	0	0	0	0	415,962
4295821	I-75 (AT SW 95TH STREET)	2,000,000	0	0	0	0	2,000,000
4306431	I-75	0	0	0	0	0	28,357
4306551	SR 492	0	2,771,063	0	0	0	2,846,063
4306561	SR 40	0	0	0	0	0	175,782
4315521	MARION COUNTY AIRPORT	0	0	0	0	0	1,718
4319351	SR 40 DOWNTOWN OCALA	751,401	0	0	0	0	751,401
4336521	SR 40	0	0	0	0	0	107,031

### 5-Year Summary of Projects by Funding Category

Project #	Project Name	2016/17	2017/18	2018/19	2019/20	2020/21	Total
<b>DDR - DISTRICT DEDICATED REVENUE</b>							
4336601	US 441	0	0	668,224	0	0	668,224
4336611	US 441	0	0	389,604	331,419	0	721,023
4336651	SR 40 CORRIDOR OPERATIONS IMPROVEMENT	0	0	0	0	0	16,725
4344081	SR 40	0	78,975	0	0	0	398,975
4350571	I-75	99,535	0	0	0	0	973,464
4352081	SR 35	0	0	1,000,000	0	0	1,000,000
4352091	I-75 (AT NW 49TH STREET)	2,000,000	0	0	0	0	2,000,000
4354922	SR 40 INTERSECTION IMPROVEMENTS	774,395	0	0	0	0	774,395
4356592	SR 200	0	0	0	0	0	148,818
4356602	SR 326	0	0	0	8,880	0	8,880
4356661	US 441	0	887,146	0	0	0	1,420,551
4363711	US 441	0	5,265	0	0	0	5,265
4368791	SR 200	0	0	7,970,700	0	0	8,804,806
4370171	OCALA INTERNATIONAL AIRPORT	0	0	1,500,000	1,600,000	0	3,100,000
4373391	US 27	340,000	0	7,552,225	0	0	7,892,225
4373441	SR 200	0	5,138,678	0	0	0	5,383,678
4378181	I-75	512,500	0	0	0	0	512,500
4378261	I-75 MARION COUNTY REST AREAS	768,750	0	0	0	0	768,750
4378271	I-75	974,105	0	0	0	0	974,105
4378281	I-75	358,750	0	0	0	0	358,750
4378291	I-75	102,500	0	0	0	0	102,500
<b>Total</b>		<b>15,530,739</b>	<b>14,638,025</b>	<b>54,794,100</b>	<b>2,291,847</b>	<b>0</b>	<b>123,984,055</b>
<b>DI - ST. - S/W INTER/INTRASTATE HWY</b>							
4106742	SR 40	0	0	0	11,100,000	0	11,100,000

### 5-Year Summary of Projects by Funding Category

Project #	Project Name	2016/17	2017/18	2018/19	2019/20	2020/21	Total
<b>DI - ST. - S/W INTER/INTRASTATE HWY</b>							
4282132	I-75	0	0	0	0	0	1,106,618
4350571	I-75	2,799,520	0	0	0	0	2,799,520
4356602	SR 326	0	0	0	0	0	5,033
<b>Total</b>		<b>2,799,520</b>	<b>0</b>	<b>0</b>	<b>11,100,000</b>	<b>0</b>	<b>15,011,171</b>
<b>DIH - STATE IN-HOUSE PRODUCT SUPPORT</b>							
2386481	US 41	0	0	54,100	0	0	1,439,973
2386511	SR 200	0	0	0	0	0	1,313,698
2386771	SR 35	0	0	0	0	0	572,054
2386774	SE 92ND LOOP (BELLEVIEW BELTWAY)	0	0	0	0	0	27,818
2386782	US 27	0	0	0	0	0	62,041
2386931	SR 35	0	0	0	0	0	958,698
2387191	SR 40	0	0	0	0	0	1,193,227
2387201	SR 40	0	0	0	0	0	249,262
4106742	SR 40	0	0	49,744	0	0	215,787
4162201	SR 326	0	0	0	0	0	56,469
4195841	US 41	0	0	0	0	0	154,950
4242831	US 441	0	0	0	0	0	67,558
4248851	SR 35	0	0	0	0	0	68,327
4272491	US 301	0	0	0	0	0	139,149
4272731	SR 35	0	0	0	0	0	20,659
4272801	US 441	0	0	0	0	0	68,523
4282132	I-75	0	0	0	0	0	144,811
4290531	US 27	0	0	0	0	0	41,708
4290831	US 27	0	0	0	0	0	36,666

### 5-Year Summary of Projects by Funding Category

Project #	Project Name	2016/17	2017/18	2018/19	2019/20	2020/21	Total
<b>DIH - STATE IN-HOUSE PRODUCT SUPPORT</b>							
4293631	SR 40	0	0	0	0	0	102,512
4295821	I-75 (AT SW 95TH STREET)	0	0	0	0	0	40,356
4297271	I-75	0	0	0	0	0	51,952
4306551	SR 492	0	68,972	0	0	0	268,972
4306561	SR 40	0	0	0	0	0	109,988
4309861	US 41	0	0	0	0	0	65,252
4317983	NE 36TH AVENUE	0	0	0	0	0	14,412
4319111	SR 40	0	0	0	0	0	82,336
4324211	SR 40	0	0	0	0	0	40,691
4325401	US 41	0	0	0	0	0	35,364
4336521	SR 40	0	80,000	47,308	0	0	233,194
4336601	US 441	0	0	43,709	0	0	139,099
4336611	US 441	0	0	54,636	0	0	80,078
4344081	SR 40	0	87,709	0	0	0	112,709
4350571	I-75	70,156	0	0	0	0	93,156
4352081	SR 35	0	0	5,000	0	0	5,000
4352091	I-75 (AT NW 49TH STREET)	30,000	0	0	0	0	40,000
4354661	I-75	0	0	0	0	0	80,172
4354922	SR 40 INTERSECTION IMPROVEMENTS	10,000	0	0	0	0	10,000
4356602	SR 326	0	14,584	0	0	0	14,584
4356661	US 441	0	101,870	0	0	0	123,870
4363711	US 441	0	0	0	0	0	7,000
4368791	SR 200	20,000	0	43,280	0	0	85,280
4373391	US 27	20,000	0	0	0	0	30,000

### 5-Year Summary of Projects by Funding Category

Project #	Project Name	2016/17	2017/18	2018/19	2019/20	2020/21	Total
<b>DIH - STATE IN-HOUSE PRODUCT SUPPORT</b>							
4373441	SR 200	0	475,581	0	0	0	675,581
4378181	I-75	0	0	0	0	0	65,500
4378261	I-75 MARION COUNTY REST AREAS	87,253	0	0	0	0	87,253
4378271	I-75	118,639	0	0	0	0	118,639
4378281	I-75	46,996	0	0	0	0	46,996
4378291	I-75	18,173	0	0	0	0	18,173
4385621	I-75 MARION COUNTY REST AREAS	0	30,000	0	0	0	30,000
<b>Total</b>		<b>421,217</b>	<b>858,716</b>	<b>297,777</b>	<b>0</b>	<b>0</b>	<b>9,739,497</b>
<b>DIS - STRATEGIC INTERMODAL SYSTEM</b>							
4282132	I-75	0	0	0	0	0	2,392,383
<b>Total</b>		<b>0</b>	<b>0</b>	<b>0</b>	<b>0</b>	<b>0</b>	<b>2,392,383</b>
<b>DITS - STATEWIDE ITS - STATE 100%.</b>							
4130194	TRAFFIC SIGNALIZATION	0	0	0	0	0	185,690
<b>Total</b>		<b>0</b>	<b>0</b>	<b>0</b>	<b>0</b>	<b>0</b>	<b>185,690</b>
<b>DPTO - STATE - PTO</b>							
4144471	OCALA INTERNATIONAL AIRPORT	0	0	0	0	0	583,481
4224401	OCALA/MARION UPWP	0	0	0	0	0	43,568
4241231	SUNTRAN	588,664	0	0	0	0	3,075,354
4314011	TPO PLANNING STUDIES	9,822	7,487	7,487	8,199	8,932	41,927
4315491	MARION COUNTY AIRPORT	0	19,774	0	0	0	19,774
4315501	DUNNELLON MUNICIPAL AIRPORT	0	0	0	0	0	4,590
4315511	DUNNELLON MUNICIPAL AIRPORT	0	0	0	0	0	94,553
4315521	MARION COUNTY AIRPORT	0	0	0	0	0	73,244
4315541	MARION COUNTY AIRPORT	0	0	0	0	0	524,774

### 5-Year Summary of Projects by Funding Category

Project #	Project Name	2016/17	2017/18	2018/19	2019/20	2020/21	Total
<b>DPTO - STATE - PTO</b>							
4315551	MARION COUNTY AIRPORT	0	0	0	0	0	33,884
4315861	OCALA INTERNATIONAL AIRPORT	1,000,000	0	0	0	0	2,200,000
4317983	NE 36TH AVENUE	0	0	0	0	0	2,000,000
4333041	SUNTRAN	0	612,464	632,684	664,318	772,875	2,682,341
4335171	MARION COUNTY AIRPORT	0	0	0	0	0	167,200
4352108	MARION TRANSIT SERVICES	38,575	0	0	0	0	38,575
4370111	MARION COUNTY AIRPORT	880,000	0	0	0	0	880,000
4370171	OCALA INTERNATIONAL AIRPORT	0	500,000	0	0	0	500,000
4370241	MARION COUNTY AIRPORT	0	13,600	185,190	0	0	198,790
4370311	OCALA INTERNATIONAL AIRPORT	0	608,731	0	0	0	642,731
4370321	OCALA INTERNATIONAL AIRPORT	0	0	0	0	0	200,000
4384171	MARION COUNTY AIRPORT	0	0	0	0	261,019	261,019
4384231	MARION COUNTY AIRPORT	0	0	0	0	38,782	38,782
4384251	MARION COUNTY AIRPORT	0	12,000	0	0	0	12,000
4384271	MARION COUNTY AIRPORT	0	0	0	0	247,098	247,098
4384281	MARION COUNTY AIRPORT	0	524,774	0	0	0	524,774
4384301	MARION-DUNNELLON	0	0	0	441,937	0	441,937
4384321	MARION COUNTY AIRPORT	0	167,200	0	0	0	167,200
4384331	MARION COUNTY AIRPORT	0	0	0	93,573	0	93,573
4384351	MARION-DUNNELLON PARALLEL TAXIWAY TO	0	0	0	0	97,726	97,726
4384761	OCALA INTERNATIONAL AIRPORT	0	0	0	0	515,877	515,877
4384771	OCALA INTERNATIONAL AIRPORT	0	0	0	0	355,230	355,230
<b>Total</b>		<b>2,517,061</b>	<b>2,466,030</b>	<b>825,361</b>	<b>1,208,027</b>	<b>2,297,539</b>	<b>16,760,002</b>
<b>DRA - REST AREAS - STATE 100%</b>							
4385621	I-75 MARION COUNTY REST AREAS	0	1,800,000	0	0	0	1,800,000

### 5-Year Summary of Projects by Funding Category

Project #	Project Name	2016/17	2017/18	2018/19	2019/20	2020/21	Total
<b>DRA - REST AREAS - STATE 100%</b>							
<b>Total</b>		<b>0</b>	<b>1,800,000</b>	<b>0</b>	<b>0</b>	<b>0</b>	<b>1,800,000</b>
<b>DS - STATE PRIMARY HIGHWAYS &amp; PTO</b>							
2386481	US 41	0	501,899	0	0	0	1,859,000
2386511	SR 200	0	0	0	0	0	51,370
2386771	SR 35	0	0	0	0	0	2,149,107
2386931	SR 35	0	0	0	0	0	19,133,863
2387191	SR 40	0	0	0	0	0	12,141,815
2387201	SR 40	0	0	0	0	0	2,093
4162201	SR 326	0	0	0	0	0	378,990
4195841	US 41	0	0	0	0	0	72,709
4242831	US 441	0	0	0	0	0	50,932
4272491	US 301	0	0	0	0	0	16,488
4272801	US 441	0	0	0	0	0	3,918,476
4282132	I-75	0	0	0	0	0	406,106
4290531	US 27	0	0	0	0	0	1,237,902
4290831	US 27	0	0	0	0	0	1,973,550
4293631	SR 40	0	0	0	0	0	46,188
4306431	I-75	0	0	0	0	0	815,207
4306561	SR 40	0	0	0	0	0	431,730
4309861	US 41	0	0	0	0	0	15,979
4319111	SR 40	0	0	0	0	0	426,443
4325401	US 41	0	0	0	0	0	148,967
4336521	SR 40	0	0	0	0	0	1,726,995
4336601	US 441	0	0	0	0	0	675,454



### 5-Year Summary of Projects by Funding Category

Project #	Project Name	2016/17	2017/18	2018/19	2019/20	2020/21	Total
<b>DS - STATE PRIMARY HIGHWAYS &amp; PTO</b>							
4336611	US 441	0	0	0	0	0	624,735
4354661	I-75	0	0	0	0	0	920,821
4368791	SR 200	0	0	32,460	0	0	32,460
4373391	US 27	0	0	36,788	0	0	36,788
<b>Total</b>		<b>0</b>	<b>501,899</b>	<b>69,248</b>	<b>0</b>	<b>0</b>	<b>49,294,168</b>
<b>DU - STATE PRIMARY/FEDERAL REIMB</b>							
4224401	OCALA/MARION UPWP	0	0	0	0	0	348,551
4241211	MARION TRANSIT	770,718	0	0	0	0	3,450,754
4314011	TPO PLANNING STUDIES	78,579	59,902	59,902	61,699	67,566	327,648
4333121	MARION TRANSIT	0	980,500	1,029,525	1,081,001	1,149,456	4,240,482
4352108	MARION TRANSIT SERVICES	308,600	0	0	0	0	308,600
4371881	MARION TRANSIT SERVICES	0	0	0	0	0	434,778
4388661	MARION TRANSIT SERVICES	293,770	0	0	0	0	538,931
<b>Total</b>		<b>1,451,667</b>	<b>1,040,402</b>	<b>1,089,427</b>	<b>1,142,700</b>	<b>1,217,022</b>	<b>9,649,744</b>
<b>DWS - WEIGH STATIONS - STATE 100%</b>							
4297271	I-75	0	0	0	0	0	1,181,180
4303553	SR 40	0	0	0	0	0	1,225,563
<b>Total</b>		<b>0</b>	<b>0</b>	<b>0</b>	<b>0</b>	<b>0</b>	<b>2,406,743</b>
<b>EB - EQUITY BONUS</b>							
2386771	SR 35	0	0	0	0	0	833,440
4106742	SR 40	0	0	0	0	0	139,975
4317971	NE 25TH AVENUE	0	0	0	0	0	876,499
4354841	PRUITT TRAIL	0	0	0	0	0	10,000
4359491	PRUITT TRAIL	0	0	0	0	0	10,000

### 5-Year Summary of Projects by Funding Category

Project #	Project Name	2016/17	2017/18	2018/19	2019/20	2020/21	Total
<b>EB - EQUITY BONUS</b>							
<b>Total</b>		<b>0</b>	<b>0</b>	<b>0</b>	<b>0</b>	<b>0</b>	<b>1,869,914</b>
<b>FAA - FEDERAL AVIATION ADMIN</b>							
4144471	OCALA INTERNATIONAL AIRPORT	0	0	0	0	0	483,385
4315491	MARION COUNTY AIRPORT	0	163,265	0	0	0	163,265
4315511	DUNNELLON MUNICIPAL AIRPORT	0	0	0	0	0	1,063,723
4315521	MARION COUNTY AIRPORT	0	0	0	0	0	862,524
4370241	MARION COUNTY AIRPORT	0	153,000	2,083,385	0	0	2,236,385
4370311	OCALA INTERNATIONAL AIRPORT	0	6,848,223	0	0	0	7,528,223
4384231	MARION COUNTY AIRPORT	0	0	0	0	436,300	436,300
4384251	MARION COUNTY AIRPORT	0	135,000	0	0	0	135,000
<b>Total</b>		<b>0</b>	<b>7,299,488</b>	<b>2,083,385</b>	<b>0</b>	<b>436,300</b>	<b>12,908,805</b>
<b>FSF1 - FED STIMULUS, S/W MANAGED</b>							
2386771	SR 35	0	0	0	0	0	26,213,990
<b>Total</b>		<b>0</b>	<b>0</b>	<b>0</b>	<b>0</b>	<b>0</b>	<b>26,213,990</b>
<b>FTA - FEDERAL TRANSIT ADMINISTRATION</b>							
4241231	SUNTRAN	400,000	0	0	0	0	2,000,000
4271882	SUNTRAN	2,019,680	0	0	0	0	5,335,934
4333041	SUNTRAN	0	400,000	400,000	400,000	0	1,200,000
<b>Total</b>		<b>2,419,680</b>	<b>400,000</b>	<b>400,000</b>	<b>400,000</b>	<b>0</b>	<b>8,535,934</b>
<b>HPP - HIGH PRIORITY PROJECTS</b>							
2386481	US 41	0	0	0	0	0	692,422
<b>Total</b>		<b>0</b>	<b>0</b>	<b>0</b>	<b>0</b>	<b>0</b>	<b>692,422</b>
<b>HRRR - HIGH RISK RURAL ROAD</b>							
4295861	CR 225	0	0	0	0	0	44,008

### 5-Year Summary of Projects by Funding Category

Project #	Project Name	2016/17	2017/18	2018/19	2019/20	2020/21	Total
<b>HRRR - HIGH RISK RURAL ROAD</b>							
4311421	CR 314A	0	0	0	0	0	21,050
<b>Total</b>		<b>0</b>	<b>0</b>	<b>0</b>	<b>0</b>	<b>0</b>	<b>65,058</b>
<b>HSP - SAFETY (HIWAY SAFETY PROGRAM)</b>							
4272801	US 441	0	0	0	0	0	3,162,705
4295861	CR 225	0	0	0	0	0	700,774
4309861	US 41	0	0	0	0	0	335,055
4311421	CR 314A	0	0	0	0	0	902,487
4324211	SR 40	0	0	0	0	0	1,048,206
4332061	CR 484	0	0	0	0	0	389,762
4348441	CR 42	404,200	0	0	0	0	475,166
4350571	I-75	2,022,910	0	0	0	0	2,022,910
4363711	US 441	0	283,127	0	0	0	383,127
<b>Total</b>		<b>2,427,110</b>	<b>283,127</b>	<b>0</b>	<b>0</b>	<b>0</b>	<b>9,420,192</b>
<b>LF - LOCAL FUNDS</b>							
4144471	OCALA INTERNATIONAL AIRPORT	0	0	0	0	0	166,012
4224401	OCALA/MARION UPWP	0	0	0	0	0	43,568
4241211	MARION TRANSIT	770,718	0	0	0	0	3,450,754
4241231	SUNTRAN	601,806	0	0	0	0	3,093,274
4241861	SE 92ND LOOP (BELLEVIEW BELTWAY)	0	0	0	0	0	7,307,911
4271882	SUNTRAN	504,920	0	0	0	0	1,333,984
4295861	CR 225	0	0	0	0	0	23,343
4311421	CR 314A	0	0	0	0	0	592,257
4314011	TPO PLANNING STUDIES	9,822	7,487	7,487	8,199	8,932	41,927
4315491	MARION COUNTY AIRPORT	0	3,628	0	0	0	3,628

### 5-Year Summary of Projects by Funding Category

Project #	Project Name	2016/17	2017/18	2018/19	2019/20	2020/21	Total
<b>LF - LOCAL FUNDS</b>							
4315501	DUNNELLO MUNICIPAL AIRPORT	0	0	0	0	0	4,590
4315511	DUNNELLO MUNICIPAL AIRPORT	0	0	0	0	0	23,638
4315521	MARION COUNTY AIRPORT	0	0	0	0	0	19,167
4315541	MARION COUNTY AIRPORT	0	0	0	0	0	131,193
4315551	MARION COUNTY AIRPORT	0	0	0	0	0	8,471
4315861	OCALA INTERNATIONAL AIRPORT	1,000,000	0	0	0	0	2,200,000
4333041	SUNTRAN	0	612,464	637,745	664,318	772,875	2,687,402
4333121	MARION TRANSIT	0	980,500	1,029,525	1,081,001	1,149,456	4,240,482
4335171	MARION COUNTY AIRPORT	0	0	0	0	0	41,800
4352108	MARION TRANSIT SERVICES	38,575	0	0	0	0	38,575
4354922	SR 40 INTERSECTION IMPROVEMENTS	4,577	0	0	0	0	4,577
4355171	SUNTRAN	0	0	900,000	0	0	900,000
4355471	SW 44TH AVENUE	0	0	1,553,699	0	0	1,553,699
4355491	SW 49TH AVENUE	0	0	8,889,779	0	0	8,889,779
4361861	SW 80TH AVENUE	0	0	0	0	0	23,984
4363751	CITYWIDE SIDEWALK IMPROVEMENTS	0	0	0	0	103,226	103,226
4370111	MARION COUNTY AIRPORT	220,000	0	0	0	0	220,000
4370171	OCALA INTERNATIONAL AIRPORT	0	125,000	375,000	400,000	0	900,000
4370241	MARION COUNTY AIRPORT	0	3,400	46,297	0	0	49,697
4370311	OCALA INTERNATIONAL AIRPORT	0	152,183	0	0	0	186,183
4370321	OCALA INTERNATIONAL AIRPORT	0	0	0	0	0	200,000
4371881	MARION TRANSIT SERVICES	0	0	0	0	0	108,695
4384171	MARION COUNTY AIRPORT	0	0	0	0	65,255	65,255
4384231	MARION COUNTY AIRPORT	0	0	0	0	9,696	9,696

### 5-Year Summary of Projects by Funding Category

Project #	Project Name	2016/17	2017/18	2018/19	2019/20	2020/21	Total
<b>LF - LOCAL FUNDS</b>							
4384251	MARION COUNTY AIRPORT	0	3,000	0	0	0	3,000
4384271	MARION COUNTY AIRPORT	0	0	0	0	61,775	61,775
4384281	MARION COUNTY AIRPORT	0	131,193	0	0	0	131,193
4384301	MARION-DUNNELLON	0	0	0	110,484	0	110,484
4384321	MARION COUNTY AIRPORT	0	41,800	0	0	0	41,800
4384331	MARION COUNTY AIRPORT	0	0	0	23,393	0	23,393
4384351	MARION-DUNNELLON PARALLEL TAXIWAY TO	0	0	0	0	24,431	24,431
4384761	OCALA INTERNATIONAL AIRPORT	0	0	0	0	515,877	515,877
4384771	OCALA INTERNATIONAL AIRPORT	0	0	0	0	355,231	355,231
4385671	CR 42	1,183,395	0	0	0	0	1,183,395
4388661	MARION TRANSIT SERVICES	97,233	0	0	0	0	158,523
<b>Total</b>		<b>4,431,046</b>	<b>2,060,655</b>	<b>13,439,532</b>	<b>2,287,395</b>	<b>3,066,754</b>	<b>41,275,869</b>
<b>MA - MIN. ALLOCATION (ANY AREA)</b>							
2386771	SR 35	0	0	0	0	0	422,670
<b>Total</b>		<b>0</b>	<b>0</b>	<b>0</b>	<b>0</b>	<b>0</b>	<b>422,670</b>
<b>ML - MA, AREAS &lt;= 200K</b>							
2386511	SR 200	0	0	0	0	0	1,891,323
<b>Total</b>		<b>0</b>	<b>0</b>	<b>0</b>	<b>0</b>	<b>0</b>	<b>1,891,323</b>
<b>NHPP - IM, BRDG REPL, NATNL HWY-MAP21</b>							
4306431	I-75	0	0	0	0	0	1,327,306
<b>Total</b>		<b>0</b>	<b>0</b>	<b>0</b>	<b>0</b>	<b>0</b>	<b>1,327,306</b>
<b>NHRE - NAT HWY PERFORM - RESURFACING</b>							
4272801	US 441	0	0	0	0	0	519,485
4290531	US 27	0	0	0	0	0	3,953,621

### 5-Year Summary of Projects by Funding Category

Project #	Project Name	2016/17	2017/18	2018/19	2019/20	2020/21	Total
<b>NHRE - NAT HWY PERFORM - RESURFACING</b>							
4306551	SR 492	0	1,885,539	0	0	0	1,885,539
4306561	SR 40	0	0	0	0	0	1,604,181
4344081	SR 40	0	798,434	0	0	0	798,434
4368791	SR 200	0	0	1,249,564	0	0	1,249,564
<b>Total</b>		<b>0</b>	<b>2,683,973</b>	<b>1,249,564</b>	<b>0</b>	<b>0</b>	<b>10,010,824</b>
<b>PL - METRO PLAN (85% FA; 15% OTHER)</b>							
4179601	OCALA/MARION UPWP	0	464,304	464,304	464,304	464,304	5,139,152
4393311	OCALA/MARION URBAN AREA FY	464,304	0	0	0	0	464,304
<b>Total</b>		<b>464,304</b>	<b>464,304</b>	<b>464,304</b>	<b>464,304</b>	<b>464,304</b>	<b>5,603,456</b>
<b>RHP - RAIL HIGHWAY X-INGS - PROT DEV</b>							
4349551	CR 328	0	0	0	0	0	169,603
4349561	E MC KINNEY AVE	0	0	0	0	0	184,653
4369101	SE 2ND AVENUE	0	0	0	0	0	185,797
4369111	NW 27TH AVENUE	0	0	0	0	0	214,773
4369171	SE 8TH STREET	0	0	0	0	0	360,600
4385521	SR 492	268,703	0	0	0	0	268,703
4385541	SR 464	326,200	0	0	0	0	326,200
4385581	NORTH MAGNOLIA AVENUE	145,054	0	0	0	0	145,054
4385591	NE 9TH STREET	201,901	0	0	0	0	201,901
<b>Total</b>		<b>941,858</b>	<b>0</b>	<b>0</b>	<b>0</b>	<b>0</b>	<b>2,057,284</b>
<b>S129 - STP EARMARKS - 2008</b>							
4241861	SE 92ND LOOP (BELLEVIEW BELTWAY)	0	0	0	0	0	245,000
<b>Total</b>		<b>0</b>	<b>0</b>	<b>0</b>	<b>0</b>	<b>0</b>	<b>245,000</b>
<b>SA - STP, ANY AREA</b>							
2386481	US 41	0	0	0	0	0	987,634

### 5-Year Summary of Projects by Funding Category

Project #	Project Name	2016/17	2017/18	2018/19	2019/20	2020/21	Total
<b>SA - STP, ANY AREA</b>							
2386511	SR 200	0	0	0	0	0	538,174
2386771	SR 35	0	0	0	0	0	126,362
4106742	SR 40	0	0	0	555,000	0	555,000
4179601	OCALA/MARION UPWP	0	0	0	0	0	68,608
4195841	US 41	0	0	0	0	0	81,156
4272491	US 301	0	0	0	0	0	3,320,814
4272801	US 441	0	0	0	0	0	5,135
4290531	US 27	0	0	0	0	0	1,762,540
4290831	US 27	0	0	0	0	0	6,010,771
4295861	CR 225	0	0	0	0	0	3,000
4317971	NE 25TH AVENUE	0	0	0	0	0	403,082
4336801	US 27	0	5,000	0	0	0	5,000
4344081	SR 40	0	11,362	0	0	0	11,362
4354861	SILVER SPRINGS BIKEWAY	0	5,000	0	0	0	5,000
4354901	SR 40	0	0	0	0	0	200
4355171	SUNTRAN	0	0	3,600,000	0	0	3,600,000
4355401	US 441	0	0	196,480	0	0	196,480
4363601	SR 40 (BLACK BEAR TRAIL)	0	0	0	1,100,000	0	1,100,000
4363611	ITS OPERATIONAL SUPPORT	0	0	0	2,617,154	0	2,617,154
4385671	CR 42	1,225,605	0	0	0	0	1,225,605
<b>Total</b>		<b>1,225,605</b>	<b>21,362</b>	<b>3,796,480</b>	<b>4,272,154</b>	<b>0</b>	<b>22,623,077</b>
<b>SE - STP, ENHANCEMENT</b>							
4354901	SR 40	0	0	0	0	0	200,000
4354921	SR 40	0	0	0	0	0	7,500

### 5-Year Summary of Projects by Funding Category

Project #	Project Name	2016/17	2017/18	2018/19	2019/20	2020/21	Total
<b>SE - STP, ENHANCEMENT</b>							
<b>Total</b>		<b>0</b>	<b>0</b>	<b>0</b>	<b>0</b>	<b>0</b>	<b>207,500</b>
<b>SL - STP, AREAS &lt;= 200K</b>							
2386481	US 41	0	0	0	0	0	213,966
2386511	SR 200	0	0	0	0	0	213,888
2386931	SR 35	0	0	0	0	0	8,645,206
2387201	SR 40	0	0	0	0	0	419,322
4106742	SR 40	410,300	700,309	219,919	1,362,424	0	7,186,551
4179601	OCALA/MARION UPWP	0	0	0	0	0	451,392
4195841	US 41	0	0	0	0	0	49,069
4241861	SE 92ND LOOP (BELLEVIEW BELTWAY)	0	0	0	0	0	35,400
4248851	SR 35	0	0	0	0	0	578,808
4272491	US 301	0	0	0	0	0	234,399
4272731	SR 35	0	0	0	0	0	187,310
4272801	US 441	0	0	0	0	0	519,874
4306561	SR 40	0	0	0	0	0	95,581
4317971	NE 25TH AVENUE	0	0	0	0	0	955,918
4324211	SR 40	0	0	0	0	0	94,716
4336512	CR 484	0	0	0	0	2,063,796	2,063,796
4336521	SR 40	0	3,420,000	4,107,706	0	0	7,527,706
4336611	US 441	0	0	0	0	1,730,874	1,730,874
4336801	US 27	0	1,000,000	0	0	0	1,000,000
4352091	I-75 (AT NW 49TH STREET)	0	0	0	0	3,530,000	3,530,000
4354841	PRUITT TRAIL	0	0	0	0	0	457,500
4354861	SILVER SPRINGS BIKEWAY	0	1,000,000	0	0	0	1,000,000



### 5-Year Summary of Projects by Funding Category

Project #	Project Name	2016/17	2017/18	2018/19	2019/20	2020/21	Total
<b>SL - STP, AREAS &lt;= 200K</b>							
4355401	US 441	0	0	2,677,821	0	0	2,677,821
4355471	SW 44TH AVENUE	0	0	2,874,301	0	0	2,874,301
4361861	SW 80TH AVENUE	0	0	0	0	0	1,440,321
4362911	SANTOS GAP TRAIL	0	0	0	0	0	2,055,000
4363581	LAND BRIDGE TRAIL	0	0	0	0	0	3,300,000
<b>Total</b>		<b>410,300</b>	<b>6,120,309</b>	<b>9,879,747</b>	<b>1,362,424</b>	<b>7,324,670</b>	<b>49,538,719</b>
<b>SN - STP, MANDATORY NON-URBAN &lt;= 5K</b>							
2386481	US 41	0	0	0	0	0	2,113,106
2386511	SR 200	0	0	0	0	0	220,000
2386931	SR 35	0	0	0	0	0	1,795,043
4106742	SR 40	214,500	2,971,020	200,000	114,250	0	3,614,463
4195841	US 41	0	0	0	0	0	1,444,745
<b>Total</b>		<b>214,500</b>	<b>2,971,020</b>	<b>200,000</b>	<b>114,250</b>	<b>0</b>	<b>9,187,357</b>
<b>TALL - TRANSPORTATION ALTS- &lt;200K</b>							
4179601	OCALA/MARION UPWP	0	0	0	0	0	75,000
4319351	SR 40 DOWNTOWN OCALA	133,244	0	0	0	0	133,244
4336651	SR 40 CORRIDOR OPERATIONS IMPROVEMENT	0	0	0	0	0	413,660
4354861	SILVER SPRINGS BIKEWAY	0	792,396	0	0	0	792,396
4364071	US 441	0	0	0	0	0	22,230
4364742	SADDLEWOOD ELEMENTARY SIDEWALK	0	0	317,096	0	0	317,096
4367551	INDIAN LAKE TRAIL FROM SILVER SPRINGS STATE	0	0	155,000	0	0	155,000
4367561	DOWNTOWN OCALA TO SILVER SPRINGS TRAIL	0	0	0	253,000	0	253,000
<b>Total</b>		<b>133,244</b>	<b>792,396</b>	<b>472,096</b>	<b>253,000</b>	<b>0</b>	<b>2,161,626</b>
<b>TALT - TRANSPORTATION ALTS- ANY AREA</b>							
4261791	SILVER SPRINGS STATE PARK PEDESTRIAN	0	0	0	0	0	320,000

### 5-Year Summary of Projects by Funding Category

Project #	Project Name	2016/17	2017/18	2018/19	2019/20	2020/21	Total
<b>TALT - TRANSPORTATION ALTS- ANY AREA</b>							
4319351	SR 40 DOWNTOWN OCALA	58,988	0	0	0	0	68,988
4336651	SR 40 CORRIDOR OPERATIONS IMPROVEMENT	0	0	0	0	0	217,640
4354841	PRUITT TRAIL	0	0	0	0	3,710,000	3,710,000
4354861	SILVER SPRINGS BIKEWAY	0	2,682,648	0	0	0	3,207,648
4363751	CITYWIDE SIDEWALK IMPROVEMENTS	0	0	0	0	772,000	772,000
4364743	LEGACY ELEMENTARY SCHOOL SIDEWALKS	0	1,441,659	0	0	0	1,441,659
4371901	BELLEVIEW TO GREENWAY TRAIL	0	75,000	0	0	0	75,000
<b>Total</b>		<b>58,988</b>	<b>4,199,307</b>	<b>0</b>	<b>0</b>	<b>4,482,000</b>	<b>9,812,935</b>
<b>TCSP - TRANS, COMMUNITY &amp; SYSTEM PRES</b>							
4241861	SE 92ND LOOP (BELLEVIEW BELTWAY)	0	0	0	0	0	916,209
<b>Total</b>		<b>0</b>	<b>0</b>	<b>0</b>	<b>0</b>	<b>0</b>	<b>916,209</b>
<b>TRIP - TRANS REGIONAL INCENTIVE PROGM</b>							
4241861	SE 92ND LOOP (BELLEVIEW BELTWAY)	0	0	0	0	0	4,839,828
4317983	NE 36TH AVENUE	4,390,000	4,235,000	13,355,290	1,159,000	100,000	23,239,290
<b>Total</b>		<b>4,390,000</b>	<b>4,235,000</b>	<b>13,355,290</b>	<b>1,159,000</b>	<b>100,000</b>	<b>28,079,118</b>

### 5-Year Summary of Funding Source

<b>Funding Source</b>	<b>2016/17</b>	<b>2017/18</b>	<b>2018/19</b>	<b>2019/20</b>	<b>2020/21</b>	<b>Total</b>
<b>Federal</b>	10,921,050	30,872,420	19,904,550	104,929,686	13,924,296	<b>180,552,002</b>
<b>Local</b>	4,431,046	2,060,655	13,439,532	2,287,395	3,066,754	<b>25,285,382</b>
<b>State</b>	30,268,171	27,692,985	80,921,575	19,191,064	5,305,203	<b>163,378,998</b>
<b>Total</b>	<b>45,620,267</b>	<b>60,626,060</b>	<b>114,265,657</b>	<b>126,408,145</b>	<b>22,296,253</b>	<b>369,216,382</b>

**Section 1 - Federal / State Projects**

---

**CR 42** **4348441** **Non-SIS**



**Work Summary:** ADD LEFT TURN LANE(S)  
**From:** AT SE 182ND AVE RD  
**To:**  
**Lead Agency:** Marion County  
**Length:** .307  
**LRTP #:** Goal 6: Objective 1 - Page 2-11

Phase	Fund Source	2016/17	2017/18	2018/19	2019/20	2020/21	Total
CST	HSP	404,200	0	0	0	0	<b>404,200</b>
<b>Total</b>		<b>404,200</b>	<b>0</b>	<b>0</b>	<b>0</b>	<b>0</b>	<b>404,200</b>

**Prior Cost < 2016/17:** 35,491  
**Future Cost > 2020/21:** 0  
**Total Project Cost:** 439,691  
**Project Description:** Add eastbound turn lane on CR 42.

**CR 42**

**4385671**

**Non-SIS**

**Work Summary:** RESURFACING      **From:** SE 58TH AVE TO W OF US 301  
**To:** US 441 TO CR 25

**Lead Agency:** Marion County      **Length:** 7.820

**LRTP #:** Goal 6: Objective 3 -  
 Page 2-11



Phase	Fund Source	2016/17	2017/18	2018/19	2019/20	2020/21	Total
CST	LF	1,183,395	0	0	0	0	1,183,395
CST	SA	1,225,605	0	0	0	0	1,225,605
<b>Total</b>		<b>2,409,000</b>	<b>0</b>	<b>0</b>	<b>0</b>	<b>0</b>	<b>2,409,000</b>

**Prior Cost < 2016/17:** 0  
**Future Cost > 2020/21:** 0  
**Total Project Cost:** 2,409,000  
**Project Description:** Routine resurfacing.

**CR 484**

**4336512**

**Non-SIS**



**Work Summary:** INTERCHANGE IMPROVEMENT  
**From:** SW 20TH AVE  
**To:** CR 475A  
**Lead Agency:** Marion County  
**Length:** .161  
**LRTP #:** Goal 3: Page 2-9

Phase	Fund Source	2016/17	2017/18	2018/19	2019/20	2020/21	Total
ROW	SL	0	0	0	0	2,063,796	<b>2,063,796</b>
<b>Total</b>		<b>0</b>	<b>0</b>	<b>0</b>	<b>0</b>	<b>2,063,796</b>	<b>2,063,796</b>

**Prior Cost < 2016/17:** 0  
**Future Cost > 2020/21:** 0  
**Total Project Cost:** 2,063,796  
**Project Description:** Upgrade existing interchange. (Priority Project #11)

**I-75**

**4378181**

**SIS**



**Work Summary:** LANDSCAPING      **From:** AT CR 318  
**To:**  
**Lead Agency:** Managed by FDOT      **Length:** .413  
**LRTP #:** Goal 5: Page 2-10

Phase	Fund Source	2016/17	2017/18	2018/19	2019/20	2020/21	Total
CST	DDR	512,500	0	0	0	0	<b>512,500</b>
<b>Total</b>		<b>512,500</b>	<b>0</b>	<b>0</b>	<b>0</b>	<b>0</b>	<b>512,500</b>

**Prior Cost < 2016/17:** 65,500  
**Future Cost > 2020/21:** 0  
**Total Project Cost:** 578,000  
**Project Description:** Landscaping and aesthetic improvements at the CR 318 interchange.



**I-75**

**4378281**

**SIS**



**Work Summary:** LANDSCAPING      **From:** AT SW 20TH STREET  
**To:**  
**Lead Agency:** FDOT      **Length:** .500  
**LRTP #:** Goal 5: Page 2-10

Phase	Fund Source	2016/17	2017/18	2018/19	2019/20	2020/21	Total
CST	DIH	46,996	0	0	0	0	<b>46,996</b>
CST	DDR	358,750	0	0	0	0	<b>358,750</b>
<b>Total</b>		<b>405,746</b>	<b>0</b>	<b>0</b>	<b>0</b>	<b>0</b>	<b>405,746</b>

**Prior Cost < 2016/17:** 0  
**Future Cost > 2020/21:** 0  
**Total Project Cost:** 405,746  
**Project Description:** Landscaping and aesthetic improvements at the SW 20th Street overpass.

**I-75**

**4378291**

**SIS**



**Work Summary:** LANDSCAPING      **From:** AT SW 43RD STREET  
**To:**  
**Lead Agency:** FDOT      **Length:** .500  
**LRTP #:** Goal 5: Page 2-10

Phase	Fund Source	2016/17	2017/18	2018/19	2019/20	2020/21	Total
CST	DIH	18,173	0	0	0	0	<b>18,173</b>
CST	DDR	102,500	0	0	0	0	<b>102,500</b>
<b>Total</b>		<b>120,673</b>	<b>0</b>	<b>0</b>	<b>0</b>	<b>0</b>	<b>120,673</b>

**Prior Cost < 2016/17:** 0  
**Future Cost > 2020/21:** 0  
**Total Project Cost:** 120,673  
**Project Description:** Landscaping and aesthetic improvements at the SW 43rd Street Flyover.

**I-75**

**4378271**

**SIS**



**Work Summary:** LANDSCAPING      **From:** AT CR 484  
**To:**  
**Lead Agency:** FDOT      **Length:** .407  
**LRTP #:** Goal 5: Page 2-10

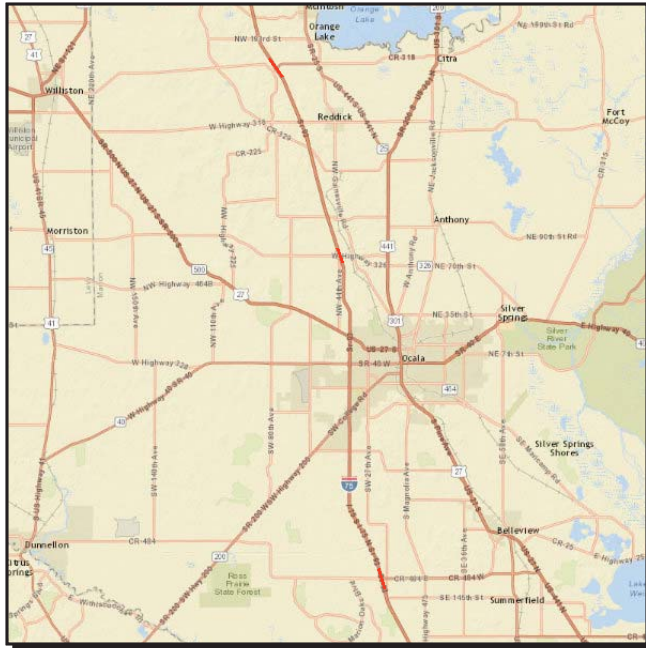
Phase	Fund Source	2016/17	2017/18	2018/19	2019/20	2020/21	Total
CST	DIH	118,639	0	0	0	0	<b>118,639</b>
CST	DDR	974,105	0	0	0	0	<b>974,105</b>
<b>Total</b>		<b>1,092,744</b>	<b>0</b>	<b>0</b>	<b>0</b>	<b>0</b>	<b>1,092,744</b>

**Prior Cost < 2016/17:** 0  
**Future Cost > 2020/21:** 0  
**Total Project Cost:** 1,092,744  
**Project Description:** Landscaping and aesthetic improvements at the CR 484 interchange.

**I-75**

**4350571**

**SIS**



**Work Summary:** LIGHTING

**From:** AT CR 484, SR 326 & CR 318

**To:**

**Lead Agency:** FDOT

**Length:** 28.270 MI

**LRTP #:** Goal 6: Page 2-11

Phase	Fund Source	2016/17	2017/18	2018/19	2019/20	2020/21	Total
CST	DI	2,799,520	0	0	0	0	<b>2,799,520</b>
CST	DIH	70,156	0	0	0	0	<b>70,156</b>
CST	DDR	99,535	0	0	0	0	<b>99,535</b>
CST	HSP	2,022,910	0	0	0	0	<b>2,022,910</b>
<b>Total</b>		<b>4,992,121</b>	<b>0</b>	<b>0</b>	<b>0</b>	<b>0</b>	<b>4,992,121</b>

**Prior Cost < 2016/17:** 896,929

**Future Cost > 2020/21:** 0

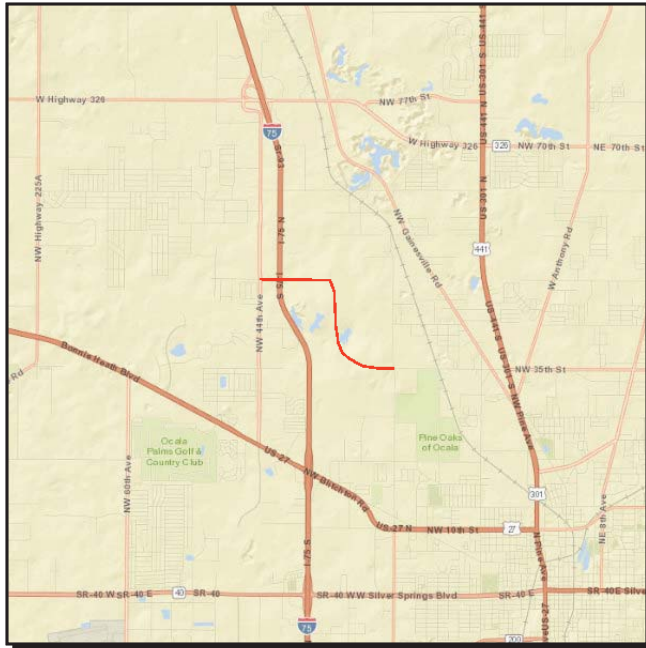
**Total Project Cost:** 5,889,050

**Project Description:** Enhance illumination at selected interchanges.

**I-75 (AT NW 49TH STREET)**

**4352091**

**SIS**



**Work Summary:** INTERCHANGE (NEW) **From:** FROM NW 35TH ST  
**To:** NW 49TH ST  
**Lead Agency:** FDOT **Length:** .001  
**LRTP #:** Goal 3: Objective 3 - Page 2-9

Phase	Fund Source	2016/17	2017/18	2018/19	2019/20	2020/21	Total
PDE	DDR	2,000,000	0	0	0	0	<b>2,000,000</b>
PDE	DIH	30,000	0	0	0	0	<b>30,000</b>
PE	SL	0	0	0	0	3,530,000	<b>3,530,000</b>
<b>Total</b>		<b>2,030,000</b>	<b>0</b>	<b>0</b>	<b>0</b>	<b>3,530,000</b>	<b>5,560,000</b>

**Prior Cost < 2016/17:** 10,000

**Future Cost > 2020/21:** 0

**Total Project Cost:** 5,570,000

**Project Description:** Construct new interchange at NW 49th Street and I-75 to facilitate projected increases in freight traffic. (Priority Project #1)

**I-75 (AT SW 95TH STREET)**

**4295821**

**SIS**



**Work Summary:** PD&E/EMO STUDY      **From:** SW 49TH AVE  
**To:** CR 475A  
**Lead Agency:** FDOT      **Length:** 1.200 mi  
**LRTP #:** Goal 3: Objective 3 - Page 2-9

Phase	Fund Source	2016/17	2017/18	2018/19	2019/20	2020/21	Total
PDE	DDR	2,000,000	0	0	0	0	<b>2,000,000</b>
<b>Total</b>		<b>2,000,000</b>	<b>0</b>	<b>0</b>	<b>0</b>	<b>0</b>	<b>2,000,000</b>

**Prior Cost < 2016/17:** 40,356

**Future Cost > 2020/21:** 0

**Total Project Cost:** 2,040,356

**Project Description:** New interchange construction at I-75 and SW 95th Street. (Priority Project #16)

**I-75 MARION COUNTY REST AREAS**

**4385621**

**SIS**



**Work Summary:** REST AREA      **From:** N OF CR 484  
**To:** S OF SR 200  
**Lead Agency:** FDOT      **Length:** .547  
**LRTP #:** Goal 3: Page 2-9

Phase	Fund Source	2016/17	2017/18	2018/19	2019/20	2020/21	Total
PE	DIH	0	30,000	0	0	0	30,000
PE	DRA	0	1,800,000	0	0	0	1,800,000
<b>Total</b>		<b>0</b>	<b>1,830,000</b>	<b>0</b>	<b>0</b>	<b>0</b>	<b>1,830,000</b>

**Prior Cost < 2016/17:** 0

**Future Cost > 2020/21:** 0

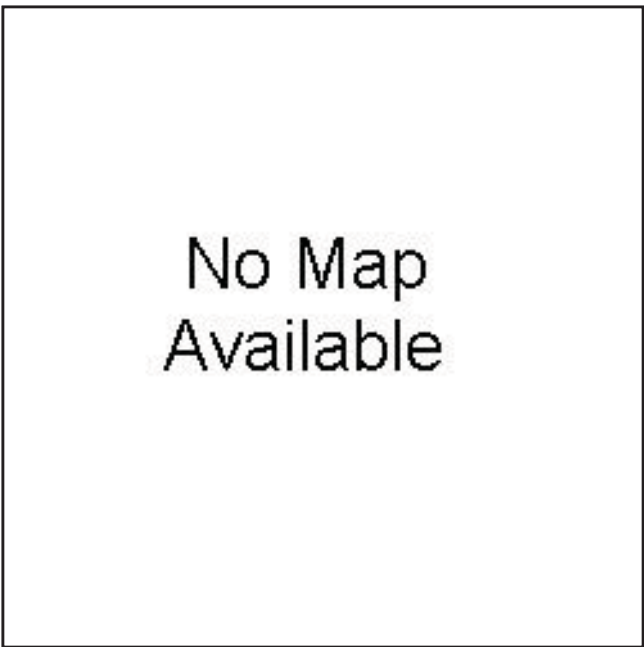
**Total Project Cost:** 1,830,000

**Project Description:** Design funding to expand services at the I-75 rest area in Marion County.

**I-75 MARION COUNTY REST AREAS**

**4378261**

**SIS**



**Work Summary:** LANDSCAPING      **From:** N OF CR 484  
**To:** S OF SR 200  
**Lead Agency:** FDOT      **Length:** .542  
**LRTP #:** Goal 5: Page 2-10

Phase	Fund Source	2016/17	2017/18	2018/19	2019/20	2020/21	Total
CST	DIH	87,253	0	0	0	0	<b>87,253</b>
CST	DDR	768,750	0	0	0	0	<b>768,750</b>
<b>Total</b>		<b>856,003</b>	<b>0</b>	<b>0</b>	<b>0</b>	<b>0</b>	<b>856,003</b>

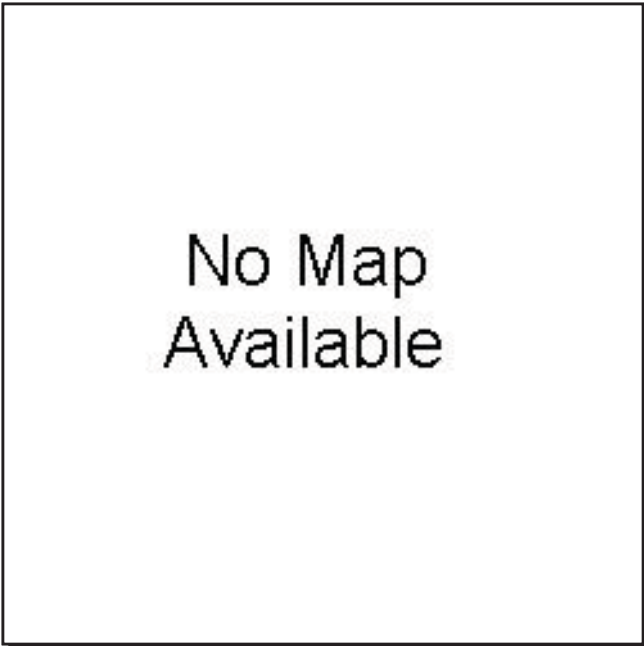
**Prior Cost < 2016/17:** 0  
**Future Cost > 2020/21:** 0  
**Total Project Cost:** 856,003  
**Project Description:** Vegetative installation and maintenance.



**ITS OPERATIONAL SUPPORT**

**4363611**

**Non-SIS**



**Work Summary:** ITS COMMUNICATION SYSTEM  
**From:**  
**To:** COUNTYWIDE SYSTEMS  
**Lead Agency:** City of Ocala/Marion County  
**Length:** .000  
**LRTP #:** Goal 6: Objective 1 - Page 2-11

Phase	Fund Source	2016/17	2017/18	2018/19	2019/20	2020/21	Total
OPS	SA	0	0	0	2,617,154	0	2,617,154
<b>Total</b>		<b>0</b>	<b>0</b>	<b>0</b>	<b>2,617,154</b>	<b>0</b>	<b>2,617,154</b>

**Prior Cost < 2016/17:** 0

**Future Cost > 2020/21:** 0

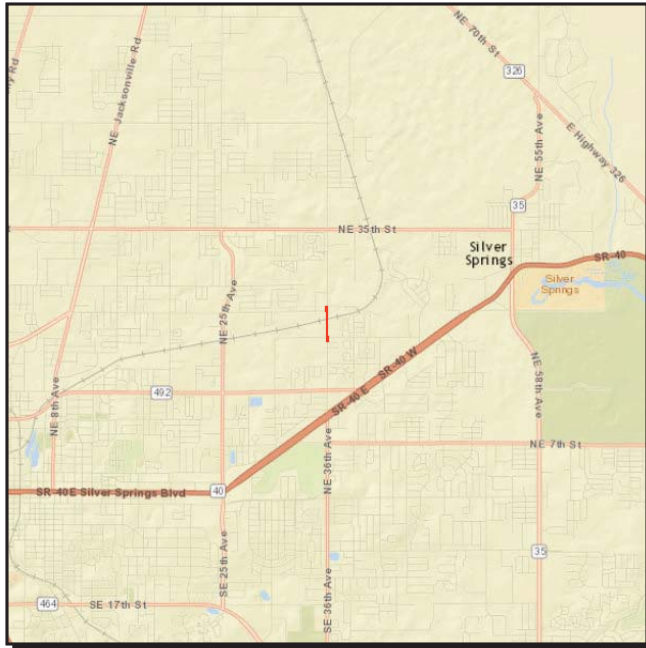
**Total Project Cost:** 2,617,154

**Project Description:** ITS capital and operations support for City of Ocala and Marion County.

**NE 36TH AVENUE**

**4317983**

**SIS**



**Work Summary:** RAIL CAPACITY PROJECT  
**From:** NE 20TH PL  
**To:** NORTH OF NE 25TH ST  
**Lead Agency:** FDOT  
**Length:** .350  
**LRTP #:** 7-15

Phase	Fund Source	2016/17	2017/18	2018/19	2019/20	2020/21	Total
ROW	TRIP	4,390,000	4,235,000	1,704,000	1,159,000	100,000	<b>11,588,000</b>
CST	TRIP	0	0	11,001,290	0	0	<b>11,001,290</b>
RRU	TRIP	0	0	650,000	0	0	<b>650,000</b>
<b>Total</b>		<b>4,390,000</b>	<b>4,235,000</b>	<b>13,355,290</b>	<b>1,159,000</b>	<b>100,000</b>	<b>23,239,290</b>

**Prior Cost < 2016/17:** 2,014,412

**Future Cost > 2020/21:** 0

**Total Project Cost:** 25,253,702

**Project Description:** Construct grade separation (bridge) over the existing CSX 'S'-line. This project is for the construction of the bridge only. Other sections will address the widening of the corridor. (Priority Project #12)

**NE 9TH STREET**

**4385591**

**Non-SIS**

**Work Summary:** RAIL SAFETY PROJECT **From:** FNR XING #627193-L

**To:**

**Lead Agency:** Managed by FDOT **Length:** .001

**LRTP #:** Goal 6: Objective 3 -  
Page 2-11

No Map  
Available

Phase	Fund Source	2016/17	2017/18	2018/19	2019/20	2020/21	Total
RRU	RHP	201,901	0	0	0	0	<b>201,901</b>
<b>Total</b>		<b>201,901</b>	<b>0</b>	<b>0</b>	<b>0</b>	<b>0</b>	<b>201,901</b>

**Prior Cost < 2016/17:** 0

**Future Cost > 2020/21:** 0

**Total Project Cost:** 201,901

**Project Description:** At-grade rail crossing improvements. Replace/Upgrade signalization, cabinets and crossing surface.

**NORTH MAGNOLIA AVENUE**

**4385581**

**Non-SIS**

**Work Summary:** RAIL SAFETY PROJECT **From:** FNR XING #627193-X  
**To:**  
**Lead Agency:** Managed by FDOT **Length:** .001  
**LRTP #:** Goal 6: Objective 3 - Page 2-11



Phase	Fund Source	2016/17	2017/18	2018/19	2019/20	2020/21	Total
RRU	RHP	145,054	0	0	0	0	<b>145,054</b>
<b>Total</b>		<b>145,054</b>	<b>0</b>	<b>0</b>	<b>0</b>	<b>0</b>	<b>145,054</b>

**Prior Cost < 2016/17:** 0

**Future Cost > 2020/21:** 0

**Total Project Cost:** 145,054

**Project Description:** At-grade rail crossing improvements. Replace/Upgrade signalization, cabinets and rehabilitate crossing surface.

**SR 200**

**4368791**

**Non-SIS**



**Work Summary:** RESURFACING      **From:** CR 484  
**To:** SW 60TH AVE  
**Lead Agency:** FDOT      **Length:** 5.898  
**LRTP #:** Goal 6: Objective 3 - Page 2-11

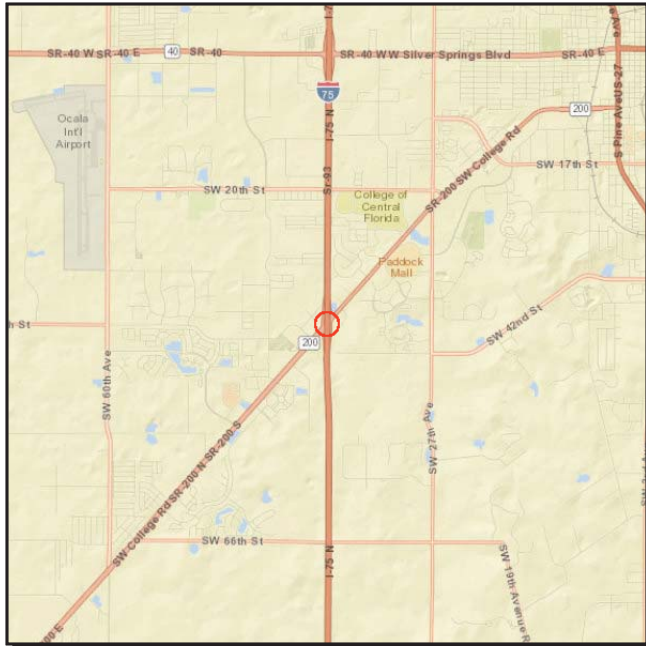
Phase	Fund Source	2016/17	2017/18	2018/19	2019/20	2020/21	Total
PE	DIH	20,000	0	0	0	0	<b>20,000</b>
CST	DS	0	0	32,460	0	0	<b>32,460</b>
CST	DIH	0	0	43,280	0	0	<b>43,280</b>
CST	DDR	0	0	7,970,700	0	0	<b>7,970,700</b>
CST	NHRE	0	0	1,249,564	0	0	<b>1,249,564</b>
<b>Total</b>		<b>20,000</b>	<b>0</b>	<b>9,296,004</b>	<b>0</b>	<b>0</b>	<b>9,316,004</b>

**Prior Cost < 2016/17:** 856,106  
**Future Cost > 2020/21:** 0  
**Total Project Cost:** 10,172,110  
**Project Description:** Routine resurfacing.

**SR 200**

**4356592**

**SIS**



**Work Summary:** ADD TURN LANE(S) **From:** at I-75

**To:**

**Lead Agency:** FDOT

**LRTP #:** Goal 6: Objective 1 - Page 2-11

Phase	Fund Source	2016/17	2017/18	2018/19	2019/20	2020/21	Total
CST	ACNP	0	4,433,733	0	0	0	4,433,733
<b>Total</b>		<b>0</b>	<b>4,433,733</b>	<b>0</b>	<b>0</b>	<b>0</b>	<b>4,433,733</b>

**Prior Cost < 2016/17:** 898,818

**Future Cost > 2020/21:** 0

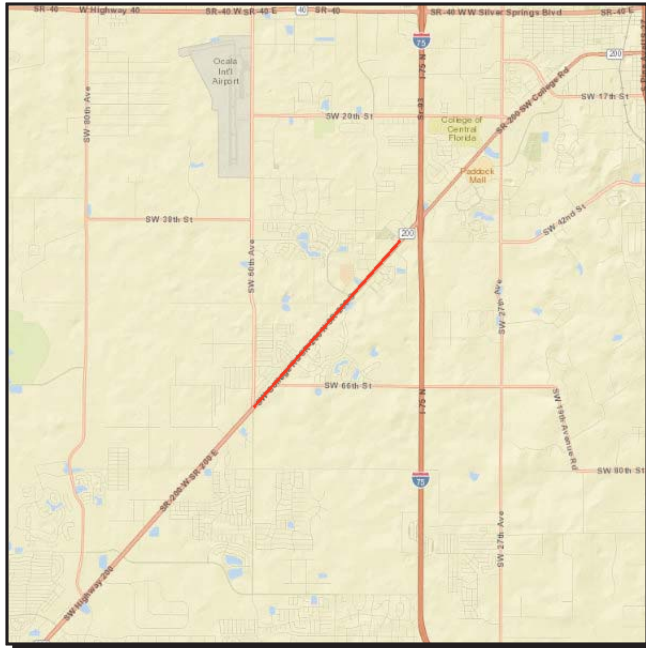
**Total Project Cost:** 5,332,551

**Project Description:** Add left and right turn lanes at I-75 off ramps.

**SR 200**

**4373441**

**Non-SIS**



**Work Summary:** RESURFACING      **From:** E OF SW 60TH AVE  
**To:** E OF SW 38TH CT  
**Lead Agency:** FDOT      **Length:** 2.767  
**LRTP #:** Goal 6: Objective 1 - Page 2-11

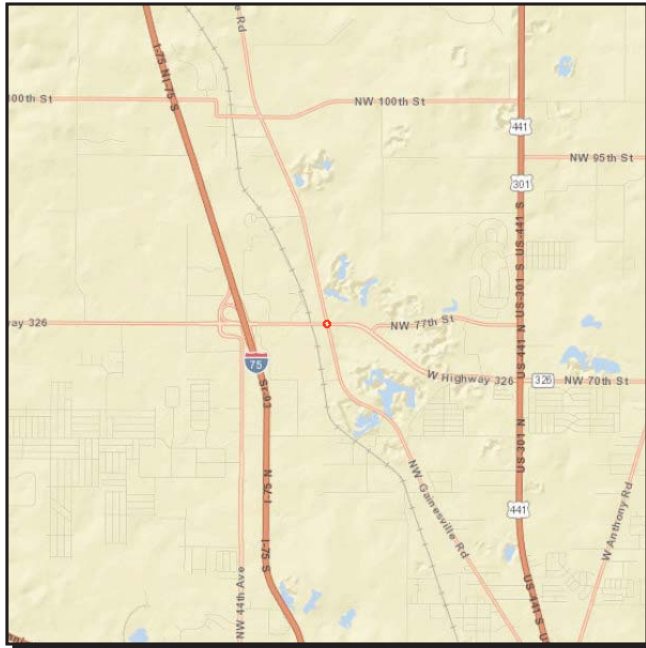
Phase	Fund Source	2016/17	2017/18	2018/19	2019/20	2020/21	Total
CST	DIH	0	475,581	0	0	0	<b>475,581</b>
CST	DDR	0	5,138,678	0	0	0	<b>5,138,678</b>
<b>Total</b>		<b>0</b>	<b>5,614,259</b>	<b>0</b>	<b>0</b>	<b>0</b>	<b>5,614,259</b>

**Prior Cost < 2016/17:** 445,000  
**Future Cost > 2020/21:** 0  
**Total Project Cost:** 6,059,259  
**Project Description:** Routine resurfacing.

**SR 326**

**4356602**

**SIS**



**Work Summary:** ADD TURN LANE(S) **From:** AT CR 25A

**To:**

**Lead Agency:** FDOT

**LRTP #:** Goal 6: Objective 1 -  
Page 2-11

Phase	Fund Source	2016/17	2017/18	2018/19	2019/20	2020/21	Total
ROW	ACNP	10,000	162,999	30,000	0	0	<b>202,999</b>
ROW	DIH	0	14,584	0	0	0	<b>14,584</b>
CST	DDR	0	0	0	8,880	0	<b>8,880</b>
CST	ACNP	0	0	0	806,859	0	<b>806,859</b>
<b>Total</b>		<b>10,000</b>	<b>177,583</b>	<b>30,000</b>	<b>815,739</b>	<b>0</b>	<b>1,033,322</b>

**Prior Cost < 2016/17:** 423,787

**Future Cost > 2020/21:** 0

**Total Project Cost:** 1,457,109

**Project Description:** Add right turn lanes on southbound CR 25A and westbound SR 326 and restripe the eastbound SR 326 center lane to increase storage for turns onto CR 25A.



**SR 35**

**4352081**

**Non-SIS**



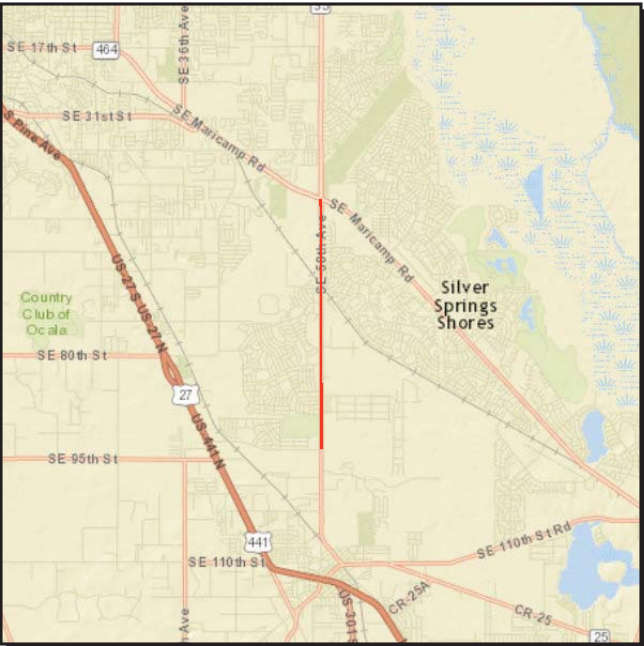
**Work Summary:** INTERSECTION IMPROVEMENT  
**From:** AT FOSS ROAD, ROBINSON ROAD & SR 25  
**To:**  
**Lead Agency:** FDOT  
**Length:** .250 MI  
**LRTP #:** Goal 6: Objective 1 - Page 2-11

Phase	Fund Source	2016/17	2017/18	2018/19	2019/20	2020/21	Total
PE	DIH	0	0	5,000	0	0	5,000
PE	DDR	0	0	1,000,000	0	0	1,000,000
<b>Total</b>		<b>0</b>	<b>0</b>	<b>1,005,000</b>	<b>0</b>	<b>0</b>	<b>1,005,000</b>

**Prior Cost < 2016/17:** 0  
**Future Cost > 2020/21:** 0  
**Total Project Cost:** 1,005,000

**Project Description:** Add turn lanes at all three intersections to increase operational efficiency of the SR 35 corridor in Belleview.

**SR 35** **2386931** **Non-SIS**



**Work Summary:** ADD LANES & RECONSTRUCT  
**From:** SE 92ND PLACE (BELLEVIEW BELTWAY)  
**To:** CR 464  
**Lead Agency:** FDOT  
**Length:** 3.758 mi  
**LRTP #:** PAGE 3-2

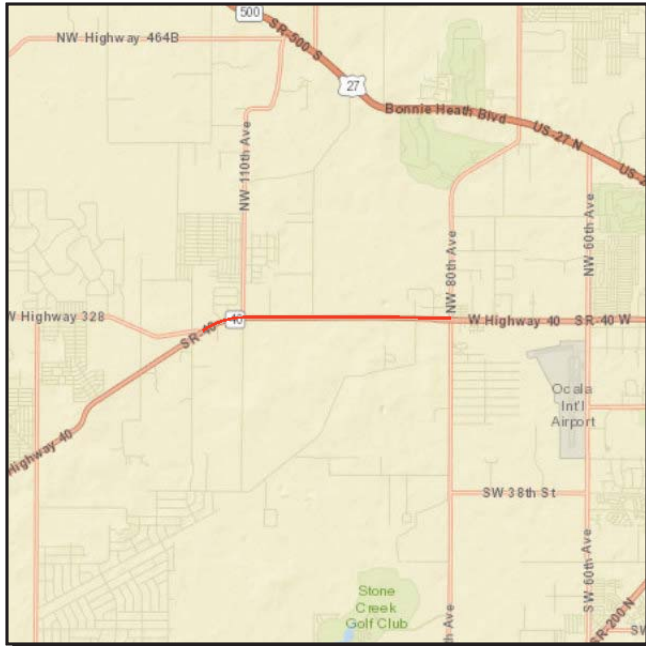
Phase	Fund Source	2016/17	2017/18	2018/19	2019/20	2020/21	Total
INC	DDR	0	750,000	0	0	0	<b>750,000</b>
DSB	DDR	0	156,144	0	0	0	<b>156,144</b>
<b>Total</b>		<b>0</b>	<b>906,144</b>	<b>0</b>	<b>0</b>	<b>0</b>	<b>906,144</b>

**Prior Cost < 2016/17:** 32,382,366  
**Future Cost > 2020/21:** 0  
**Total Project Cost:** 33,288,510  
**Project Description:** Capacity expansion project to widen SR 35 from two to four lanes.

**SR 40**

**2387191**

**Non-SIS**



**Work Summary:** ADD LANES & RECONSTRUCT  
**From:** CR 328  
**To:** SW 80TH AVE  
**Lead Agency:** FDOT  
**Length:** 4.035 mi  
**LRTP #:** PAGE 3-2

Phase	Fund Source	2016/17	2017/18	2018/19	2019/20	2020/21	Total
CST	DDR	160,000	0	0	0	0	<b>160,000</b>
<b>Total</b>		<b>160,000</b>	<b>0</b>	<b>0</b>	<b>0</b>	<b>0</b>	<b>160,000</b>

**Prior Cost < 2016/17:** 21,315,553

**Future Cost > 2020/21:** 0

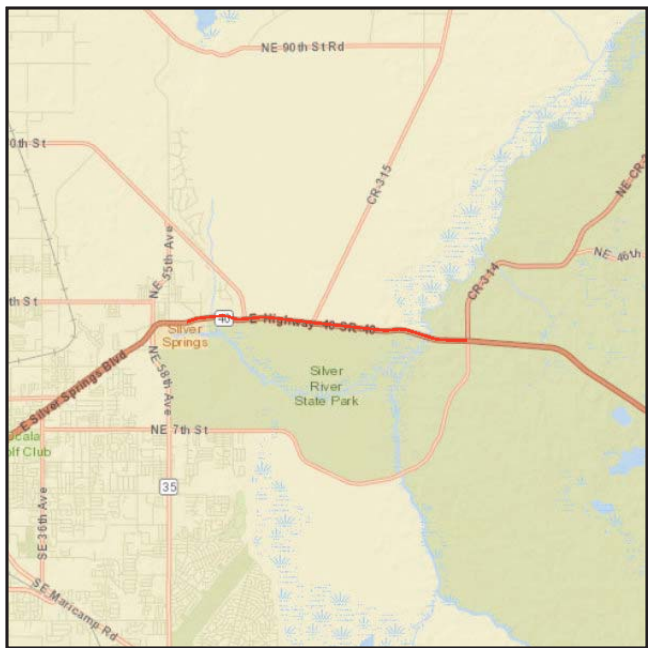
**Total Project Cost:** 21,475,553

**Project Description:** Capacity expansion project to widen SR 40 from two to four lanes. Construction has been recently completed. Remaining funds awaiting final dispensation.

**SR 40**

**4106742**

**SIS**



**Work Summary:** PRELIM ENG FOR FUTURE CAPACITY  
**From:** END OF 4 LANES  
**To:** TO CR 314  
**Lead Agency:** FDOT  
**Length:** 4.517 mi  
**LRTP #:** PAGE 3-2

Phase	Fund Source	2016/17	2017/18	2018/19	2019/20	2020/21	Total
ENV	ACSN	1,163,794	0	0	0	0	<b>1,163,794</b>
ROW	SN	214,500	2,971,020	200,000	114,250	0	<b>3,499,770</b>
ROW	SL	410,300	309	219,919	1,362,424	0	<b>1,992,952</b>
PE	SL	0	700,000	0	0	0	<b>700,000</b>
ROW	DDR	0	0	2,944,061	0	0	<b>2,944,061</b>
ROW	DIH	0	0	49,744	0	0	<b>49,744</b>
CST	DI	0	0	0	11,100,000	0	<b>11,100,000</b>
CST	SA	0	0	0	555,000	0	<b>555,000</b>
CST	ACNP	0	0	0	96,113,995	0	<b>96,113,995</b>
<b>Total</b>		<b>1,788,594</b>	<b>3,671,329</b>	<b>3,413,724</b>	<b>109,245,669</b>	<b>0</b>	<b>118,119,316</b>

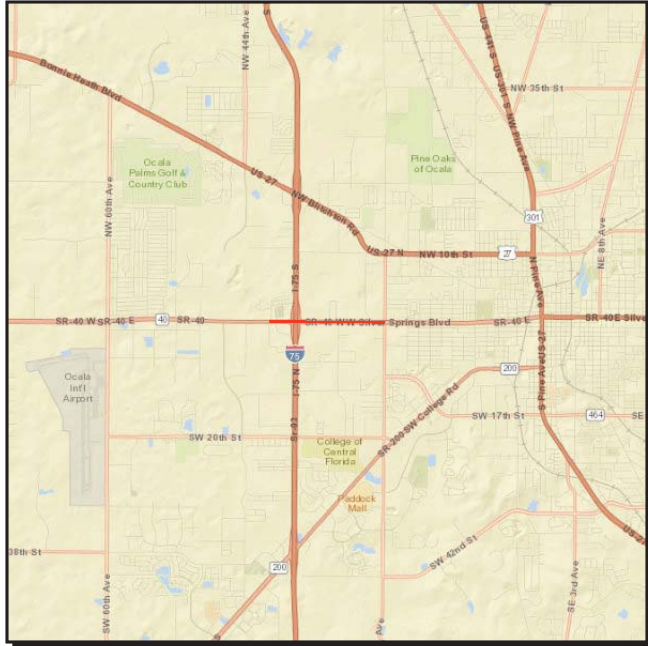
**Prior Cost < 2016/17:** 6,577,170

**Future Cost > 2020/21:** 0

**Total Project Cost:** 124,696,486

**Project Description:** Capacity expansion project to widen SR 40 from two to four lanes. (Priority Project #13)

**SR 40** **4336521** **Non-SIS**



**Work Summary:** INTERCHANGE IMPROVEMENT  
**From:** SW 27TH AVENUE  
**To:** SW 40TH AVENUE  
**Lead Agency:** FDOT  
**Length:** 1.337 MI  
**LRTP #:** PAGE 5-2

Phase	Fund Source	2016/17	2017/18	2018/19	2019/20	2020/21	Total
ROW	DIH	0	80,000	47,308	0	0	127,308
ROW	SL	0	3,420,000	4,107,706	0	0	7,527,706
<b>Total</b>		<b>0</b>	<b>3,500,000</b>	<b>4,155,014</b>	<b>0</b>	<b>0</b>	<b>7,655,014</b>

**Prior Cost < 2016/17:** 1,939,912

**Future Cost > 2020/21:** 0

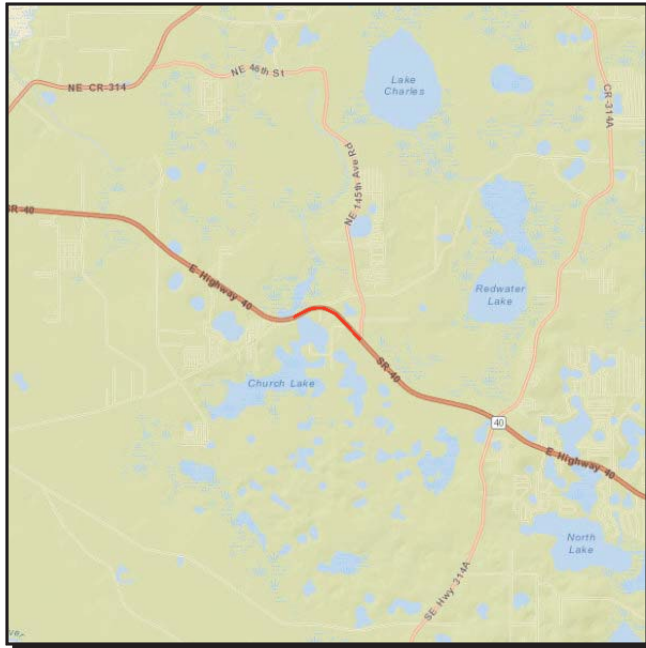
**Total Project Cost:** 9,594,926

**Project Description:** Upgrade existing interchange including additional turn-lanes. (Priority Project #10)

**SR 40**

**4344081**

**SIS**



**Work Summary:** RESURFACING      **From:** E OF NE 10TH ST  
**To:** E OF NE 145TH AVE RD  
**Lead Agency:** FDOT      **Length:** 1.037  
**LRTP #:** Goal 6: Objective 3 - Page 2-11

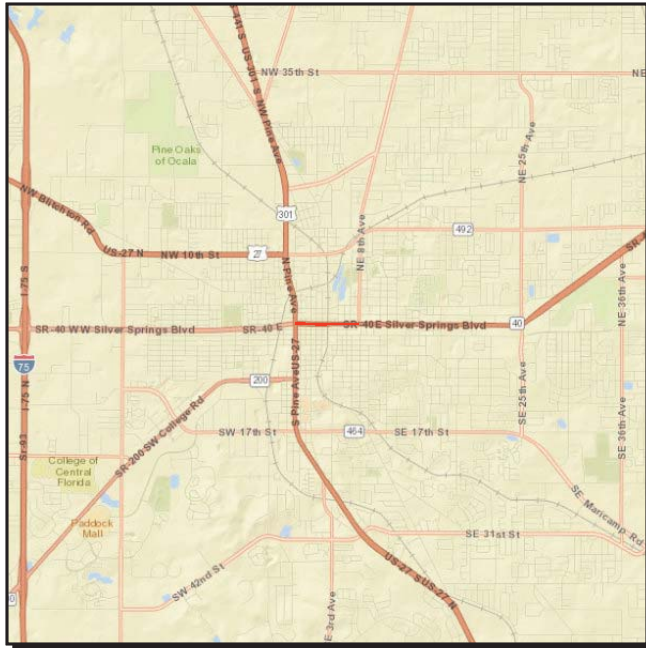
Phase	Fund Source	2016/17	2017/18	2018/19	2019/20	2020/21	Total
CST	DIH	0	87,709	0	0	0	<b>87,709</b>
CST	SA	0	11,362	0	0	0	<b>11,362</b>
CST	DDR	0	78,975	0	0	0	<b>78,975</b>
CST	NHRE	0	798,434	0	0	0	<b>798,434</b>
<b>Total</b>		<b>0</b>	<b>976,480</b>	<b>0</b>	<b>0</b>	<b>0</b>	<b>976,480</b>

**Prior Cost < 2016/17:** 345,000  
**Future Cost > 2020/21:** 0  
**Total Project Cost:** 1,321,480  
**Project Description:** Routine resurfacing.

**SR 40 DOWNTOWN OCALA**

**4319351**

**Non-SIS**



**Work Summary:** SIDEWALK

**From:** US 441

**To:** NE 8TH AVE

**Lead Agency:** FDOT

**Length:** 0.633 mi

**LRTP #:** GOAL 1: Objective 2 -  
Page 2-8

Phase	Fund Source	2016/17	2017/18	2018/19	2019/20	2020/21	Total
PE	DDR	751,401	0	0	0	0	<b>751,401</b>
PE	TALT	58,988	0	0	0	0	<b>58,988</b>
PE	TALL	133,244	0	0	0	0	<b>133,244</b>
<b>Total</b>		<b>943,633</b>	<b>0</b>	<b>0</b>	<b>0</b>	<b>0</b>	<b>943,633</b>

**Prior Cost < 2016/17:** 10,000

**Future Cost > 2020/21:** 0

**Total Project Cost:** 953,633

**Project Description:** Project will enhance pedestrian accessibility/facilities on the SR 40 corridor in and near the City of Ocala Central Business District. Intersection improvements at selected locations are also alternatives for this project.(Priority Project #5)

**SR 40 INTERSECTION IMPROVEMENTS**

**4354922**

**Non-SIS**



**Work Summary:** INTERSECTION IMPROVEMENT  
**From:** AT MARTIN LUTHER KING BLVD.  
**To:**  
**Lead Agency:** City of Ocala  
**Length:** .002  
**LRTP #:** GOAL 6: Page 2-11

Phase	Fund Source	2016/17	2017/18	2018/19	2019/20	2020/21	Total
CST	LF	4,577	0	0	0	0	<b>4,577</b>
CST	DIH	10,000	0	0	0	0	<b>10,000</b>
CST	DDR	774,395	0	0	0	0	<b>774,395</b>
<b>Total</b>		<b>788,972</b>	<b>0</b>	<b>0</b>	<b>0</b>	<b>0</b>	<b>788,972</b>

**Prior Cost < 2016/17:** 0

**Future Cost > 2020/21:** 0

**Total Project Cost:** 788,972

**Project Description:** Intersection improvements include repaving, burying utilities and concrete stamping to create west side gateway feature into the City of Ocala.



**SR 464**

**4385541**

**Non-SIS**

**Work Summary:** RAIL SAFETY PROJECT **From:** FNR XING #627218-E  
**To:**  
**Lead Agency:** FDOT **Length:** .002  
**LRTP #:** Goal 6: Objective 3 - Page 2-11



Phase	Fund Source	2016/17	2017/18	2018/19	2019/20	2020/21	Total
RRU	RHP	326,200	0	0	0	0	<b>326,200</b>
<b>Total</b>		<b>326,200</b>	<b>0</b>	<b>0</b>	<b>0</b>	<b>0</b>	<b>326,200</b>

**Prior Cost < 2016/17:** 0

**Future Cost > 2020/21:** 0

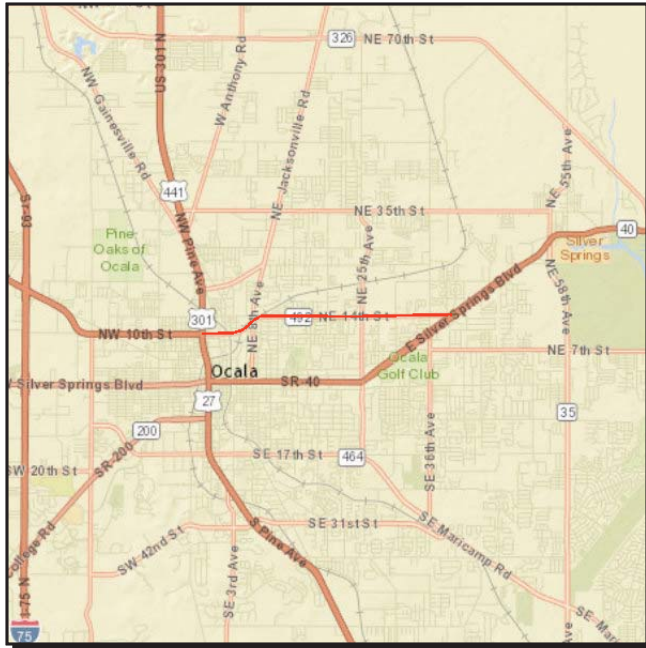
**Total Project Cost:** 326,200

**Project Description:** At-grade rail crossing improvements. Replace/Upgrade signalization, cabinets and rehabilitate crossing surface.

**SR 492**

**4306551**

**Non-SIS**



**Work Summary:** RESURFACING      **From:** US 441  
**To:** SR 40  
**Lead Agency:** FDOT      **Length:** 3.737  
**LRTP #:** Goal 6: Objective 3 - Page 2-11

Phase	Fund Source	2016/17	2017/18	2018/19	2019/20	2020/21	Total
CST	DIH	0	68,972	0	0	0	<b>68,972</b>
CST	DDR	0	2,771,063	0	0	0	<b>2,771,063</b>
CST	NHRE	0	1,885,539	0	0	0	<b>1,885,539</b>
<b>Total</b>		<b>0</b>	<b>4,725,574</b>	<b>0</b>	<b>0</b>	<b>0</b>	<b>4,725,574</b>

**Prior Cost < 2016/17:** 275,000  
**Future Cost > 2020/21:** 0  
**Total Project Cost:** 5,000,574  
**Project Description:** Routine resurfacing.

**SR 492**

**4385521**

**Non-SIS**

**Work Summary:** RAIL SAFETY PROJECT **From:** FNR XING #627192-E  
**To:**  
**Lead Agency:** FDOT **Length:** .002  
**LRTP #:** Goal 6: Objective 3 - Page 2-11



Phase	Fund Source	2016/17	2017/18	2018/19	2019/20	2020/21	Total
RRU	RHP	268,703	0	0	0	0	<b>268,703</b>
<b>Total</b>		<b>268,703</b>	<b>0</b>	<b>0</b>	<b>0</b>	<b>0</b>	<b>268,703</b>

**Prior Cost < 2016/17:** 0

**Future Cost > 2020/21:** 0

**Total Project Cost:** 268,703

**Project Description:** At-grade rail crossing improvements. Replace/Upgrade signalization, cabinets and rehabilitate crossing surface.

**SW 44TH AVENUE**

**4355471**

**Non-SIS**

**Work Summary:** NEW ROAD CONSTRUCTION  
**From:** SR 200  
**To:** SW 32ND ST  
**Lead Agency:** City of Ocala  
**Length:** .000  
**LRTP #:** Goal 2: Page 2-9



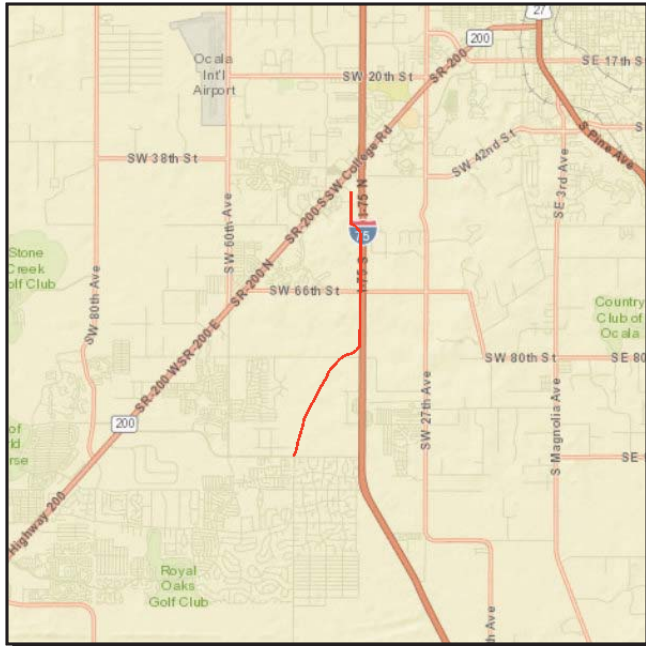
Phase	Fund Source	2016/17	2017/18	2018/19	2019/20	2020/21	Total
CST	LF	0	0	1,553,699	0	0	<b>1,553,699</b>
CST	SL	0	0	2,874,301	0	0	<b>2,874,301</b>
<b>Total</b>		<b>0</b>	<b>0</b>	<b>4,428,000</b>	<b>0</b>	<b>0</b>	<b>4,428,000</b>

**Prior Cost < 2016/17:** 0  
**Future Cost > 2020/21:** 0  
**Total Project Cost:** 4,428,000  
**Project Description:** Construct new 4-lane corridor with bicycle lanes and sidewalks.

**SW 49TH AVENUE**

**4355491**

**Non-SIS**



**Work Summary:** NEW ROAD CONSTRUCTION  
**From:** SW 42ND ST  
**To:** SW 95TH ST  
**Lead Agency:** Marion County  
**Length:** .000  
**LRTP #:** PAGE 3-2

Phase	Fund Source	2016/17	2017/18	2018/19	2019/20	2020/21	Total
CST	LF	0	0	8,889,779	0	0	8,889,779
CST	CIGP	0	0	7,400,221	0	0	7,400,221
<b>Total</b>		<b>0</b>	<b>0</b>	<b>16,290,000</b>	<b>0</b>	<b>0</b>	<b>16,290,000</b>

**Prior Cost < 2016/17:** 0

**Future Cost > 2020/21:** 0

**Total Project Cost:** 16,290,000

**Project Description:** Construct a new four-lane, divided roadway with sidewalks and bicycle lanes.

**US 27**

**4373391**

**SIS**

**Work Summary:** RESURFACING **From:** LEVY COUNTY LINE

**To:** CR 326

**Lead Agency:** FDOT

**Length:** 6.683

**LRTP #:** Goal 6: Objective - Page 2-11



Phase	Fund Source	2016/17	2017/18	2018/19	2019/20	2020/21	Total
PE	DIH	20,000	0	0	0	0	<b>20,000</b>
PE	DDR	340,000	0	0	0	0	<b>340,000</b>
CST	DS	0	0	36,788	0	0	<b>36,788</b>
CST	DDR	0	0	7,552,225	0	0	<b>7,552,225</b>
<b>Total</b>		<b>360,000</b>	<b>0</b>	<b>7,589,013</b>	<b>0</b>	<b>0</b>	<b>7,949,013</b>

**Prior Cost < 2016/17:** 10,000

**Future Cost > 2020/21:** 0

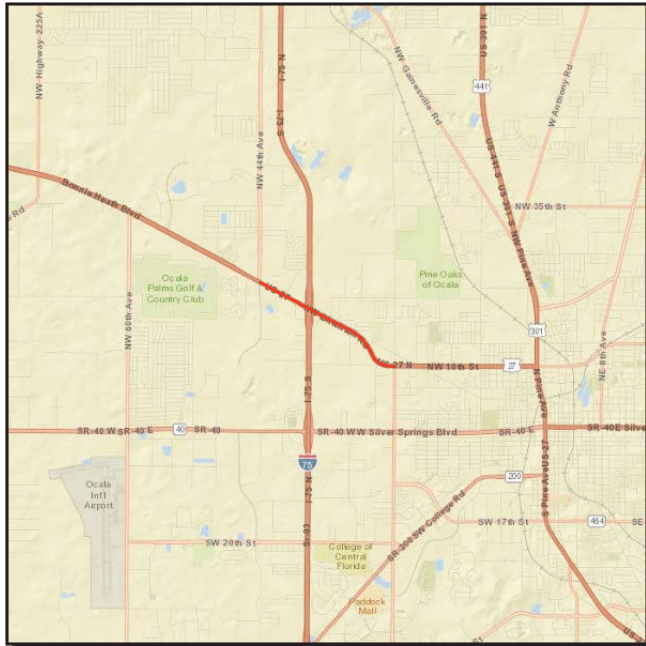
**Total Project Cost:** 7,959,013

**Project Description:** Routine resurfacing.

**US 27**

**4336801**

**SIS**

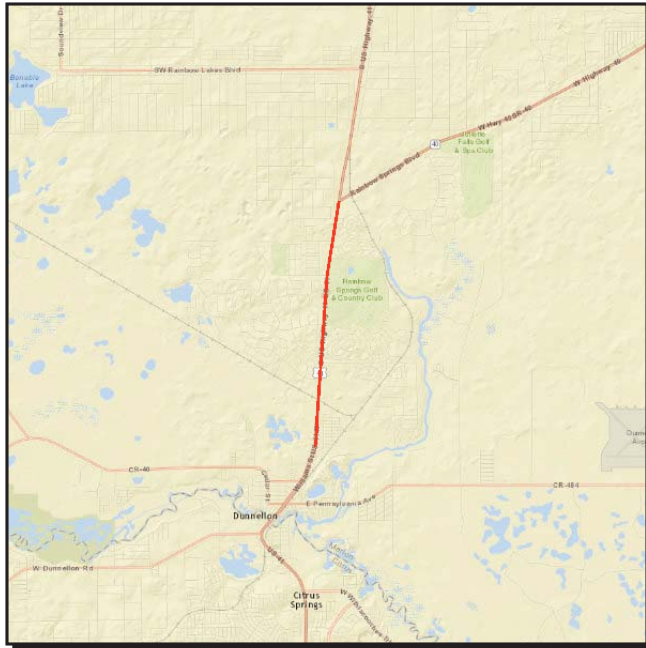


**Work Summary:** PD&E/EMO STUDY      **From:** NW 44TH AVE  
**To:** NW 27TH AVE  
**Lead Agency:** FDOT      **Length:** 1.845  
**LRTP #:** PAGE 5-5

Phase	Fund Source	2016/17	2017/18	2018/19	2019/20	2020/21	Total
PDE	SA	0	5,000	0	0	0	<b>5,000</b>
PDE	SL	0	1,000,000	0	0	0	<b>1,000,000</b>
<b>Total</b>		<b>0</b>	<b>1,005,000</b>	<b>0</b>	<b>0</b>	<b>0</b>	<b>1,005,000</b>

**Prior Cost < 2016/17:** 0  
**Future Cost > 2020/21:** 0  
**Total Project Cost:** 1,005,000  
**Project Description:** Widen from four-lanes to six-lanes.

**US 41** **2386481** **Non-SIS**



**Work Summary:** ADD LANES & RECONSTRUCT  
**From:** SW 111TH PLACE LANE  
**To:** SR 40  
**Lead Agency:** FDOT  
**Length:** 3.585 mi  
**LRTP #:** PAGE 3-2

Phase	Fund Source	2016/17	2017/18	2018/19	2019/20	2020/21	Total
PE	DDR	700,000	0	0	0	0	<b>700,000</b>
ROW	DDR	5,638,310	4,492,419	0	0	0	<b>10,130,729</b>
ROW	DS	0	501,899	0	0	0	<b>501,899</b>
CST	DIH	0	0	54,100	0	0	<b>54,100</b>
CST	CM	0	0	239,547	0	0	<b>239,547</b>
CST	DDR	0	0	32,417,738	0	0	<b>32,417,738</b>
<b>Total</b>		<b>6,338,310</b>	<b>4,994,318</b>	<b>32,711,385</b>	<b>0</b>	<b>0</b>	<b>44,044,013</b>

**Prior Cost < 2016/17:** 15,819,548

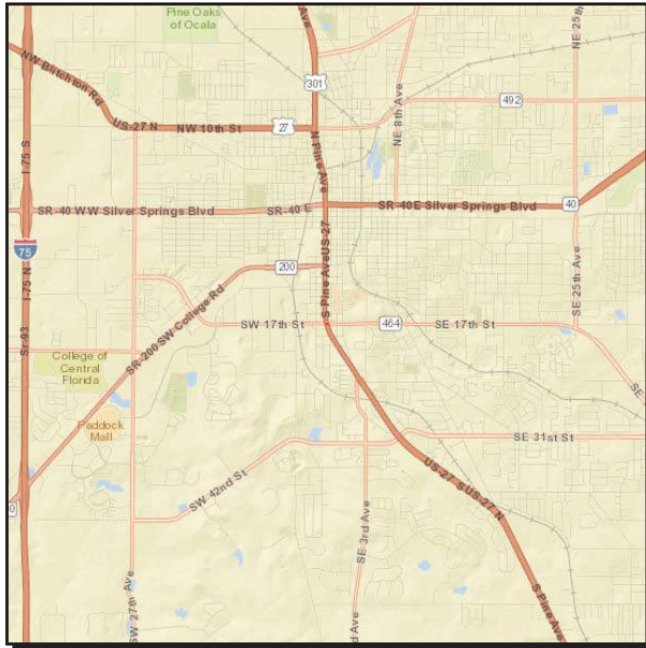
**Future Cost > 2020/21:** 0

**Total Project Cost:** 59,863,561

**Project Description:** Capacity expansion project to widen the US 41 corridor from two to four-lanes. (Priority Project #8)



**US 441** **4336601** **Non-SIS**



**Work Summary:** TRAFFIC OPS IMPROVEMENT  
**From:** AT SR 464  
**To:**  
**Lead Agency:** FDOT  
**Length:** .001 MI  
**LRTP #:** Goal 6: Objective 1 - Page 2-11

Phase	Fund Source	2016/17	2017/18	2018/19	2019/20	2020/21	Total
ROW	DIH	0	0	43,709	0	0	<b>43,709</b>
ROW	DDR	0	0	668,224	0	0	<b>668,224</b>
<b>Total</b>		<b>0</b>	<b>0</b>	<b>711,933</b>	<b>0</b>	<b>0</b>	<b>711,933</b>

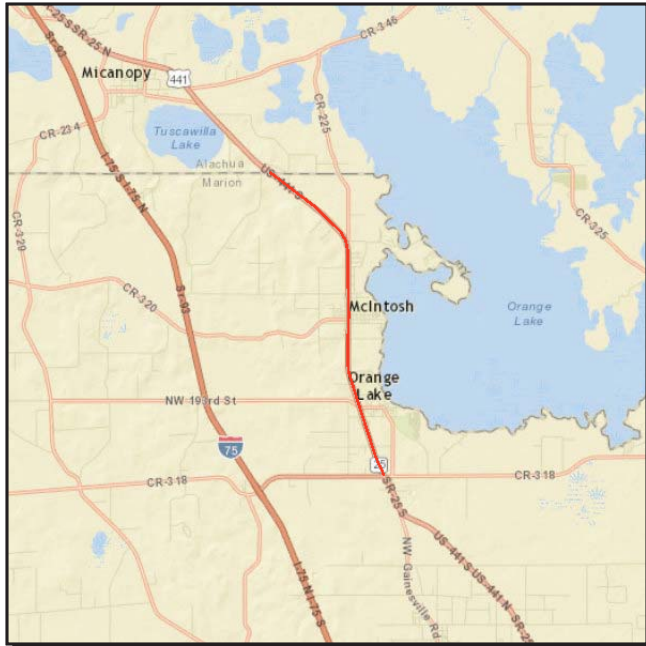
**Prior Cost < 2016/17:** 770,844

**Future Cost > 2020/21:** 0

**Total Project Cost:** 1,482,777

**Project Description:** Operational improvements to include the addition of an added NB left-turn lane and a modified NB right-turn lane. (Priority Project #3)

**US 441** **4363711** **Non-SIS**



**Work Summary:** SIGNING/PAVEMENT MARKINGS  
**From:** S of CR 318  
**To:** ALACHUA CL  
**Lead Agency:** FDOT  
**LRTP #:** GOAL 3: Objective 2 - Page 2-9

Phase	Fund Source	2016/17	2017/18	2018/19	2019/20	2020/21	Total
CST	DDR	0	5,265	0	0	0	5,265
CST	HSP	0	283,127	0	0	0	283,127
<b>Total</b>		<b>0</b>	<b>288,392</b>	<b>0</b>	<b>0</b>	<b>0</b>	<b>288,392</b>

**Prior Cost < 2016/17:** 107,000

**Future Cost > 2020/21:** 0

**Total Project Cost:** 395,392

**Project Description:** Install audible warning systems along the interior and exterior travel lane border lines to mitigate roadway departure crashes. (Type of audible warning systems is yet to be determined. (Adhesive pucks, ground in strips, etc.)

**US 441** **4336611** **Non-SIS**



**Work Summary:** TRAFFIC OPS IMPROVEMENT  
**From:** SR 40  
**To:** SR 40A  
**Lead Agency:** FDOT  
**Length:** .055 MI  
**LRTP #:** Goal 6: Objective 1 - Page 2-11

Phase	Fund Source	2016/17	2017/18	2018/19	2019/20	2020/21	Total
ROW	DIH	0	0	54,636	0	0	<b>54,636</b>
ROW	DDR	0	0	389,604	331,419	0	<b>721,023</b>
CST	SL	0	0	0	0	1,730,874	<b>1,730,874</b>
<b>Total</b>		<b>0</b>	<b>0</b>	<b>444,240</b>	<b>331,419</b>	<b>1,730,874</b>	<b>2,506,533</b>

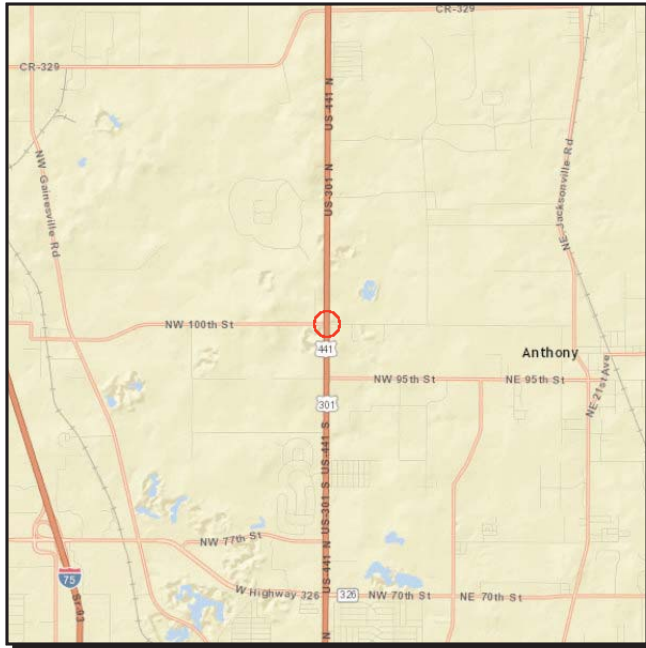
**Prior Cost < 2016/17:** 650,177

**Future Cost > 2020/21:** 0

**Total Project Cost:** 3,156,710

**Project Description:** Extend NB left-turn queue south Broadway Street to increase storage capacity. (Priority Project #2)

**US 441** **4355401** **Non-SIS**



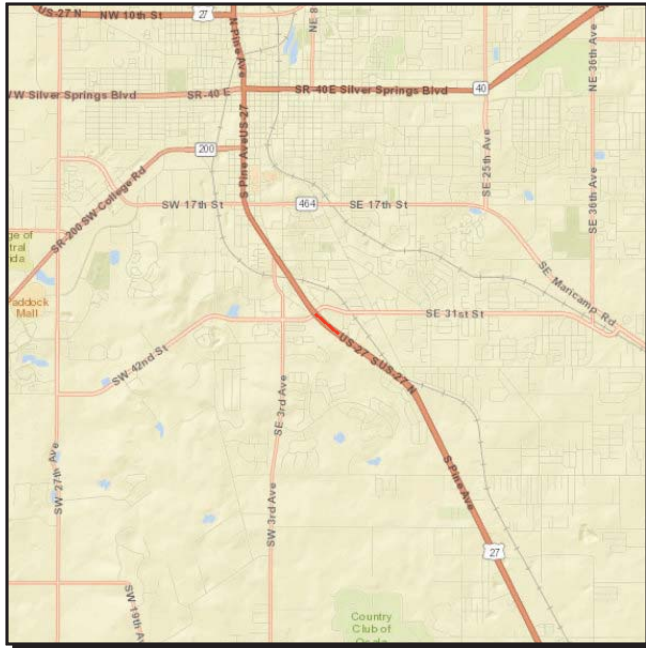
**Work Summary:** INTERSECTION IMPROVEMENT  
**From:** AT NW 100TH ST  
**To:**  
**Lead Agency:** Marion County  
**Length:** .252 MI  
**LRTP #:** GOAL 3: Objective 2 - Page 2-9

Phase	Fund Source	2016/17	2017/18	2018/19	2019/20	2020/21	Total
CST	SL	0	0	2,677,821	0	0	2,677,821
CST	SA	0	0	196,480	0	0	196,480
<b>Total</b>		<b>0</b>	<b>0</b>	<b>2,874,301</b>	<b>0</b>	<b>0</b>	<b>2,874,301</b>

**Prior Cost < 2016/17:** 0  
**Future Cost > 2020/21:** 0  
**Total Project Cost:** 2,874,301

**Project Description:** Line-of-sight restrictions at this location create significant safety hazards at this intersection. This project will address these hazards by lowering the grade of the crest of the hill on US 441 and removing foliage adjacent to the corridor.

**US 441** **4356661** **Non-SIS**



**Work Summary:** DRAINAGE IMPROVEMENTS  
**From:** SE 10TH AVE  
**To:** SE 31ST ST  
**Lead Agency:** FDOT  
**Length:** .289  
**LRTP #:** Goal 6: Objective 1 - Page 2-11

Phase	Fund Source	2016/17	2017/18	2018/19	2019/20	2020/21	Total
CST	DIH	0	101,870	0	0	0	<b>101,870</b>
CST	DDR	0	887,146	0	0	0	<b>887,146</b>
<b>Total</b>		<b>0</b>	<b>989,016</b>	<b>0</b>	<b>0</b>	<b>0</b>	<b>989,016</b>

**Prior Cost < 2016/17:** 555,405

**Future Cost > 2020/21:** 0

**Total Project Cost:** 1,544,421

**Project Description:** Upgrade existing drainage systems on the US 441 corridor.

**Section 2 - TPO Funding**

---

Phase	Fund Source	2016/17	2017/18	2018/19	2019/20	2020/21	Total
<b>OCALA/MARION UPWP FROM FY 2010/FY 2011 TO FY 2013/FY 2014 - 4179601</b>							<b>*Non-SIS*</b>
<b>TRANSPORTATION PLANNING</b>							
<b>Responsible Agency: Ocala/Marion TPO</b>							
PLN	PL	0	464,304	464,304	464,304	464,304	<b>1,857,216</b>
<b>Total</b>		<b>0</b>	<b>464,304</b>	<b>464,304</b>	<b>464,304</b>	<b>464,304</b>	<b>1,857,216</b>
<i>Prior Cost &lt; 2016/17</i>		<i>3,876,936</i>	<i>Future Cost &gt; 2020/21</i>		<i>0</i>	<i>Total Project Cost</i>	<i>5,734,152</i>
<b>OCALA/MARION URBAN AREA FY 2016/2017-2017/2018 UPWP - 4393311</b>							<b>*Non-SIS*</b>
<b>TRANSPORTATION PLANNING</b>							
<b>Length: .000</b>							
<b>Responsible Agency: Ocala/Marion TPO</b>							
PLN	PL	464,304	0	0	0	0	<b>464,304</b>
<b>Total</b>		<b>464,304</b>	<b>0</b>	<b>0</b>	<b>0</b>	<b>0</b>	<b>464,304</b>
<i>Prior Cost &lt; 2016/17</i>		<i>0</i>	<i>Future Cost &gt; 2020/21</i>		<i>0</i>	<i>Total Project Cost</i>	<i>464,304</i>
<b>TPO PLANNING STUDIES FROM TO SECTION 5303 - 4314011</b>							<b>*Non-SIS*</b>
<b>PTO STUDIES</b>							
<b>Responsible Agency: Ocala/Marion TPO</b>							
PLN	DU	78,579	59,902	59,902	61,699	67,566	<b>327,648</b>
PLN	DPTO	9,822	7,487	7,487	8,199	8,932	<b>41,927</b>
PLN	LF	9,822	7,487	7,487	8,199	8,932	<b>41,927</b>
<b>Total</b>		<b>98,223</b>	<b>74,876</b>	<b>74,876</b>	<b>78,097</b>	<b>85,430</b>	<b>411,502</b>
<i>Prior Cost &lt; 2016/17</i>		<i>0</i>	<i>Future Cost &gt; 2020/21</i>		<i>0</i>	<i>Total Project Cost</i>	<i>411,502</i>

**Section 3 - Countywide**

---



Phase	Fund Source	2016/17	2017/18	2018/19	2019/20	2020/21	Total
<b>ASPHALT RESURFACING AT VARIOUS LOCATIONS - 4233912</b>							<b>*Non-SIS*</b>
<b>ROUTINE MAINTENANCE CONTRACTS</b>							
<b>Responsible Agency: FDOT</b>							
MNT	D	679,000	0	0	0	0	<b>679,000</b>
<b>Total</b>		<b>679,000</b>	<b>0</b>	<b>0</b>	<b>0</b>	<b>0</b>	<b>679,000</b>
<i>Prior Cost &lt; 2016/17</i>		<i>1,493,160</i>	<i>Future Cost &gt; 2020/21</i>		<i>0</i>	<i>Total Project Cost</i>	<i>2,172,160</i>
<b>LIGHTING AGREEMENTS AT DDR FUNDS - 4136153</b>							<b>*Non-SIS*</b>
<b>LIGHTING</b>							
<b>Responsible Agency: FDOT</b>							
MNT	D	342,672	352,955	363,344	374,456	385,691	<b>1,819,118</b>
<b>Total</b>		<b>342,672</b>	<b>352,955</b>	<b>363,344</b>	<b>374,456</b>	<b>385,691</b>	<b>1,819,118</b>
<i>Prior Cost &lt; 2016/17</i>		<i>3,169,387</i>	<i>Future Cost &gt; 2020/21</i>		<i>0</i>	<i>Total Project Cost</i>	<i>4,988,505</i>
<b>PAVEMENT MARKINGS - AT THERMOPLASTIC AND RPM'S - 4291821</b>							<b>*Non-SIS*</b>
<b>ROUTINE MAINTENANCE CONTRACTS</b>							
<b>Responsible Agency: FDOT</b>							
MNT	D	600,000	600,000	600,000	600,000	0	<b>2,400,000</b>
<b>Total</b>		<b>600,000</b>	<b>600,000</b>	<b>600,000</b>	<b>600,000</b>	<b>0</b>	<b>2,400,000</b>
<i>Prior Cost &lt; 2016/17</i>		<i>2,842,200</i>	<i>Future Cost &gt; 2020/21</i>		<i>0</i>	<i>Total Project Cost</i>	<i>5,242,200</i>

Phase	Fund Source	2016/17	2017/18	2018/19	2019/20	2020/21	Total
<b>PERFORMANCE AESTHETICS - 4278392</b>							<b>*Non-SIS*</b>
<b>ROUTINE MAINTENANCE CONTRACTS</b>							<b>Length: .000</b>
<b>Responsible Agency: FDOT</b>							
MNT	D	517,000	517,000	1,498,500	740,000	740,000	<b>4,012,500</b>
<b>Total</b>		<b>517,000</b>	<b>517,000</b>	<b>1,498,500</b>	<b>740,000</b>	<b>740,000</b>	<b>4,012,500</b>
<i>Prior Cost &lt; 2016/17</i>		<i>2,277,500</i>	<i>Future Cost &gt; 2020/21</i>		<i>0</i>	<i>Total Project Cost</i>	<i>6,290,000</i>
<b>PRIMARY IN HOUSE AT VARIOUS ROADWAYS - 4181071</b>							<b>*Non-SIS*</b>
<b>ROUTINE MAINTENANCE CONTRACTS</b>							
<b>Responsible Agency: FDOT</b>							
MNT	D	1,727,867	1,723,360	1,717,734	1,717,734	1,781,973	<b>8,668,668</b>
<b>Total</b>		<b>1,727,867</b>	<b>1,723,360</b>	<b>1,717,734</b>	<b>1,717,734</b>	<b>1,781,973</b>	<b>8,668,668</b>
<i>Prior Cost &lt; 2016/17</i>		<i>25,786,835</i>	<i>Future Cost &gt; 2020/21</i>		<i>0</i>	<i>Total Project Cost</i>	<i>34,455,503</i>
<b>TRAFFIC SIGNALIZATION AT VARIOUS LOCATIONS - 4130194</b>							<b>*Non-SIS*</b>
<b>ROUTINE MAINTENANCE CONTRACTS</b>							
<b>Responsible Agency: FDOT</b>							
OPS	DDR	350,493	358,335	351,548	351,548	0	<b>1,411,924</b>
<b>Total</b>		<b>350,493</b>	<b>358,335</b>	<b>351,548</b>	<b>351,548</b>	<b>0</b>	<b>1,411,924</b>
<i>Prior Cost &lt; 2016/17</i>		<i>3,003,082</i>	<i>Future Cost &gt; 2020/21</i>		<i>0</i>	<i>Total Project Cost</i>	<i>4,415,006</i>

Phase	Fund Source	2016/17	2017/18	2018/19	2019/20	2020/21	Total
<b>UNPAVED SHOULDER REPAIR - 4291781</b>							<i>*Non-SIS*</i>
<b>ROUTINE MAINTENANCE CONTRACTS</b>		<b>LRTP No: Objective</b>					
<b>Responsible Agency: FDOT</b>							
MNT	D	743,095	0	0	0	0	<b>743,095</b>
<b>Total</b>		<b>743,095</b>	<b>0</b>	<b>0</b>	<b>0</b>	<b>0</b>	<b>743,095</b>
<i>Prior Cost &lt; 2016/17</i>		<i>558,852</i>	<i>Future Cost &gt; 2020/21</i>		<i>0</i>	<i>Total Project Cost</i>	<i>1,301,947</i>

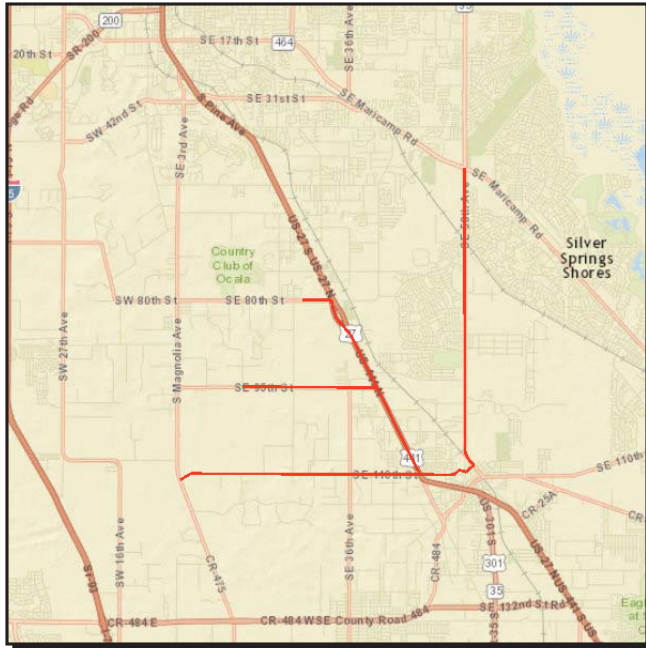
**Section 4 - Bike / Ped Projects**

---

**BELLEVUE TO GREENWAY TRAIL**

**4371901**

**Non-SIS**



**Work Summary:** BIKE PATH  
**From:** LAKE LILLIAN PARK  
**To:** GREENWAY TRAILS  
**Lead Agency:** TPO  
**Length:** .000  
**LRTP #:** GOAL 1: Objective 2 - Page 2-8

Phase	Fund Source	2016/17	2017/18	2018/19	2019/20	2020/21	Total
PLN	TALT	0	75,000	0	0	0	<b>75,000</b>
<b>Total</b>		<b>0</b>	<b>75,000</b>	<b>0</b>	<b>0</b>	<b>0</b>	<b>75,000</b>

**Prior Cost < 2016/17:** 0

**Future Cost > 2020/21:** 0

**Total Project Cost:** 75,000

**Project Description:** Conduct analysis to identify the best route for connection from Lake Lillian Park to the Cross Florida Greenway.

**CITYWIDE SIDEWALK IMPROVEMENTS**

**4363751**

**Non-SIS**

**Work Summary:** SIDEWALK

**From:**

**To:**

**Lead Agency:** City of Ocala

**Length:** .000

**LRTP #:** GOAL 1: Objective 2 -  
Page 2-8



Phase	Fund Source	2016/17	2017/18	2018/19	2019/20	2020/21	Total
CST	TALT	0	0	0	0	772,000	<b>772,000</b>
CST	LF	0	0	0	0	103,226	<b>103,226</b>
<b>Total</b>		<b>0</b>	<b>0</b>	<b>0</b>	<b>0</b>	<b>875,226</b>	<b>875,226</b>

**Prior Cost < 2016/17:** 0

**Future Cost > 2020/21:** 0

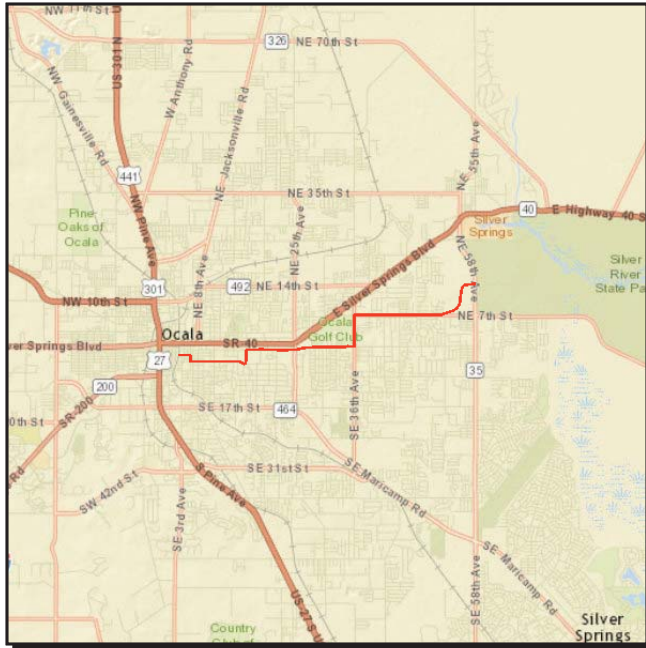
**Total Project Cost:** 875,226

**Project Description:** Downtown sidewalk construction (Various locations).

**DOWNTOWN OCALA TO SILVER SPRINGS TRAIL**

**4367561**

**Non-SIS**



**Work Summary:** BIKE PATH  
**From:** OSCEOLA AVE  
**To:** SILVER SPRINGS STATE PARK  
**Lead Agency:** City of Ocala  
**Length:** .000  
**LRTP #:** GOAL 1: Objective 2 - Page 2-8

Phase	Fund Source	2016/17	2017/18	2018/19	2019/20	2020/21	Total
PE	TALL	0	0	0	253,000	0	<b>253,000</b>
<b>Total</b>		<b>0</b>	<b>0</b>	<b>0</b>	<b>253,000</b>	<b>0</b>	<b>253,000</b>

**Prior Cost < 2016/17:** 0

**Future Cost > 2020/21:** 0

**Total Project Cost:** 253,000

**Project Description:** Construct/designate an eight to twelve-foot multi-use path from Osceola Avenue to Silver Springs State Park.

**INDIAN LAKE TRAIL FROM SILVER SPRINGS STATE PARK TO**

**4367551**

**Non-SIS**



**Work Summary:** BIKE PATH      **From:** SILVER SPRINGS PARK  
**To:** INDIAN LAKE PARK  
**Lead Agency:** Marion County      **Length:** .000  
**LRTP #:** GOAL 1: Objective 2 - Page 2-8

Phase	Fund Source	2016/17	2017/18	2018/19	2019/20	2020/21	Total
PE	TALL	0	0	155,000	0	0	<b>155,000</b>
<b>Total</b>		<b>0</b>	<b>0</b>	<b>155,000</b>	<b>0</b>	<b>0</b>	<b>155,000</b>

**Prior Cost < 2016/17:** 0

**Future Cost > 2020/21:** 0

**Total Project Cost:** 155,000

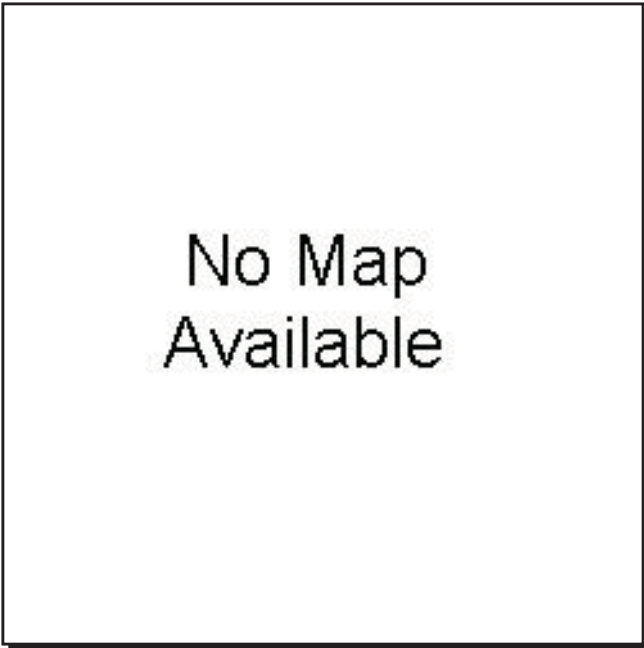
**Project Description:** Construct approximately five miles of twelve-foot wide multi-use path from Silver Springs State Park north to Indian Lakes Park.



**LEGACY ELEMENTARY SCHOOL SIDEWALKS**

**4364743**

**Non-SIS**



**Work Summary:** SIDEWALK **From:** CHESTNUT RD, LARCH RD, JUNIPER RD & SE 79TH ST

**To:**

**Lead Agency:** Managed by MARION COUNTY

**Length:** .000

**LRTP #:** Goal 1 & 3: Page 2-8 & 2-9

Phase	Fund Source	2016/17	2017/18	2018/19	2019/20	2020/21	Total
CST	TALT	0	1,441,659	0	0	0	<b>1,441,659</b>
<b>Total</b>		<b>0</b>	<b>1,441,659</b>	<b>0</b>	<b>0</b>	<b>0</b>	<b>1,441,659</b>

**Prior Cost < 2016/17:** 0

**Future Cost > 2020/21:** 0

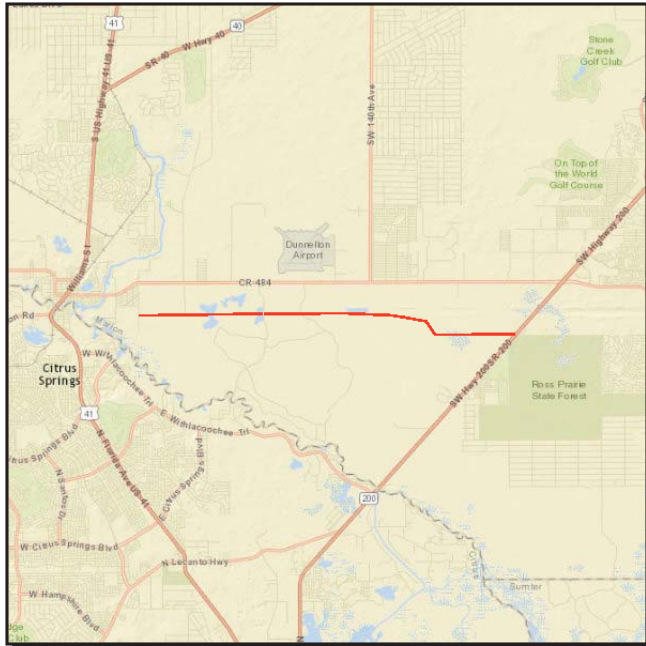
**Total Project Cost:** 1,441,659

**Project Description:** Construct sidewalks Larch Road and SE 79th Street. Complete construction on sidewalks on Chestnut Road and Juniper Road.

**PRUITT TRAIL**

**4354841**

**Non-SIS**



**Work Summary:** BIKE PATH  
**From:** WITHLACOOCHEE BRIDGE TRAIL AT BRIDGES ROAD  
**To:** SR 200  
**Lead Agency:** Marion County  
**Length:** .000  
**LRTP #:** GOAL 1: Objective 2 - Page 2-8

Phase	Fund Source	2016/17	2017/18	2018/19	2019/20	2020/21	Total
CST	TALT	0	0	0	0	3,710,000	<b>3,710,000</b>
<b>Total</b>		<b>0</b>	<b>0</b>	<b>0</b>	<b>0</b>	<b>3,710,000</b>	<b>3,710,000</b>

**Prior Cost < 2016/17:** 467,500

**Future Cost > 2020/21:** 0

**Total Project Cost:** 4,177,500

**Project Description:** Construct a twelve-foot wide paved multi-use path from SR 200 to the Bridges Road Trailhead.

**SADDLEWOOD ELEMENTARY SIDEWALK IMPROVEMENTS**

**4364742**

**Non-SIS**



**Work Summary:** SIDEWALK      **From:** SW 43RD CT  
**To:** SW 44TH AVE  
**Lead Agency:** Managed by MARION COUNTY      **Length:** .000  
**LRTP #:** Goal 1 & 3: Page 2-8 & 2-9

Phase	Fund Source	2016/17	2017/18	2018/19	2019/20	2020/21	Total
CST	TALL	0	0	317,096	0	0	<b>317,096</b>
<b>Total</b>		<b>0</b>	<b>0</b>	<b>317,096</b>	<b>0</b>	<b>0</b>	<b>317,096</b>

**Prior Cost < 2016/17:** 0

**Future Cost > 2020/21:** 0

**Total Project Cost:** 317,096

**Project Description:** Construct five-foot wide sidewalks from the Fore Ranch Community to Saddlewood Elementary School.

**SILVER SPRINGS BIKEWAY**

**4354861**

**Non-SIS**



**Work Summary:** BIKE PATH      **From:** SILVER SPRINGS STATE PARK  
**To:** SE 64TH AVE RD  
**Lead Agency:** Marion County      **Length:** .000  
**LRTP #:** GOAL 1: Objective 2 - Page 2-8

Phase	Fund Source	2016/17	2017/18	2018/19	2019/20	2020/21	Total
CST	TALT	0	2,682,648	0	0	0	<b>2,682,648</b>
CST	SL	0	1,000,000	0	0	0	<b>1,000,000</b>
CST	TALL	0	792,396	0	0	0	<b>792,396</b>
CST	SA	0	5,000	0	0	0	<b>5,000</b>
<b>Total</b>		<b>0</b>	<b>4,480,044</b>	<b>0</b>	<b>0</b>	<b>0</b>	<b>4,480,044</b>

**Prior Cost < 2016/17:** 525,000

**Future Cost > 2020/21:** 0

**Total Project Cost:** 5,005,044

**Project Description:** Construct a twelve-foot paved multi-use path from Silver Springs State Park to CR 42 along the Ocklawaha River, primarily along the existing levy system.

**SR 40 (BLACK BEAR TRAIL)**

**4363601**

**Non-SIS**



**Work Summary:** BIKE PATH  
**From:** SE 183RD AVENUE ROAD  
**To:** US 17 (VOLUSIA COUNTY)  
**Lead Agency:** FDOT  
**Length:** Approx. 27 Miles  
**LRTP #:** GOAL 1: Objective 2 - Page 2-8

Phase	Fund Source	2016/17	2017/18	2018/19	2019/20	2020/21	Total
PDE	SA	0	0	0	1,100,000	0	<b>1,100,000</b>
<b>Total</b>		<b>0</b>	<b>0</b>	<b>0</b>	<b>1,100,000</b>	<b>0</b>	<b>1,100,000</b>

**Prior Cost < 2016/17:** 0

**Future Cost > 2020/21:** 0

**Total Project Cost:** 1,100,000

**Project Description:** The Black Bear Trail will be a twelve foot wide multi-use path that generally parallels SR 40 from SE 183rd Avenue Road (Levy Hammock Road) in Marion County, through Lake County, to US 17 in Volusia County.

**Section 5 - Aviation Projects**

---

Phase	Fund Source	2016/17	2017/18	2018/19	2019/20	2020/21	Total
<b>MARION COUNTY AIRPORT - 4384231</b>							<b>*Non-SIS*</b>
<b>AVIATION PRESERVATION PROJECT</b>				<b>LRTP No: Goal 1:</b>		<b>Length: .000</b>	
<b>Responsible Agency: Marion County</b>							
CAP	DPTO	0	0	0	0	38,782	<b>38,782</b>
CAP	LF	0	0	0	0	9,696	<b>9,696</b>
CAP	FAA	0	0	0	0	436,300	<b>436,300</b>
<b>Total</b>		<b>0</b>	<b>0</b>	<b>0</b>	<b>0</b>	<b>484,778</b>	<b>484,778</b>
<i>Prior Cost &lt; 2016/17</i>		<i>0</i>	<i>Future Cost &gt; 2020/21</i>		<i>0</i>	<i>Total Project Cost</i>	<i>484,778</i>

<b>MARION COUNTY AIRPORT - 4384251</b>							<b>*Non-SIS*</b>
<b>AVIATION SAFETY PROJECT</b>				<b>LRTP No: Goal 1:</b>		<b>Length: .000</b>	
<b>Responsible Agency: Marion County</b>							
CAP	DPTO	0	12,000	0	0	0	<b>12,000</b>
CAP	LF	0	3,000	0	0	0	<b>3,000</b>
CAP	FAA	0	135,000	0	0	0	<b>135,000</b>
<b>Total</b>		<b>0</b>	<b>150,000</b>	<b>0</b>	<b>0</b>	<b>0</b>	<b>150,000</b>
<i>Prior Cost &lt; 2016/17</i>		<i>0</i>	<i>Future Cost &gt; 2020/21</i>		<i>0</i>	<i>Total Project Cost</i>	<i>150,000</i>

<b>MARION COUNTY AIRPORT AT HANGAR CONSTRUCTION - 4370111</b>							<b>*Non-SIS*</b>
<b>AVIATION REVENUE/OPERATIONAL</b>				<b>LRTP No: Goal 1:</b>		<b>Length: .000</b>	
<b>Responsible Agency: Marion County</b>							
CAP	DPTO	880,000	0	0	0	0	<b>880,000</b>
CAP	LF	220,000	0	0	0	0	<b>220,000</b>
<b>Total</b>		<b>1,100,000</b>	<b>0</b>	<b>0</b>	<b>0</b>	<b>0</b>	<b>1,100,000</b>
<i>Prior Cost &lt; 2016/17</i>		<i>0</i>	<i>Future Cost &gt; 2020/21</i>		<i>0</i>	<i>Total Project Cost</i>	<i>1,100,000</i>

Phase	Fund Source	2016/17	2017/18	2018/19	2019/20	2020/21	Total
<b>MARION COUNTY AIRPORT AT CONSTRUCT AIRCRAFT PARKING APRON - 4384281</b>							<b>*Non-SIS*</b>
<b>AVIATION CAPACITY PROJECT</b>					<b>L RTP No: Goal 1:</b>	<b>Length: .000</b>	
<b>Responsible Agency: Marion County</b>							
CAP	DPTO	0	524,774	0	0	0	<b>524,774</b>
CAP	LF	0	131,193	0	0	0	<b>131,193</b>
<b>Total</b>		<b>0</b>	<b>655,967</b>	<b>0</b>	<b>0</b>	<b>0</b>	<b>655,967</b>
<i>Prior Cost &lt; 2016/17</i>		<i>0</i>	<i>Future Cost &gt; 2020/21</i>	<i>0</i>	<i>Total Project Cost</i>		<i>655,967</i>

<b>MARION COUNTY AIRPORT FROM AIRCRAFT PARKING APRON TO PHASE II - 4315491</b>							<b>*Non-SIS*</b>
<b>AVIATION CAPACITY PROJECT</b>					<b>L RTP No: Goal 1:</b>		
<b>Responsible Agency: Marion County</b>							
CAP	DPTO	0	19,774	0	0	0	<b>19,774</b>
CAP	LF	0	3,628	0	0	0	<b>3,628</b>
CAP	FAA	0	163,265	0	0	0	<b>163,265</b>
<b>Total</b>		<b>0</b>	<b>186,667</b>	<b>0</b>	<b>0</b>	<b>0</b>	<b>186,667</b>
<i>Prior Cost &lt; 2016/17</i>		<i>0</i>	<i>Future Cost &gt; 2020/21</i>	<i>0</i>	<i>Total Project Cost</i>		<i>186,667</i>

<b>MARION COUNTY AIRPORT AT OVERLAY RUNWAY 9/27 - 4384171</b>							<b>*Non-SIS*</b>
<b>AVIATION PRESERVATION PROJECT</b>					<b>L RTP No: Goal 1:</b>	<b>Length: .000</b>	
<b>Responsible Agency: Marion County</b>							
CAP	DPTO	0	0	0	0	261,019	<b>261,019</b>
CAP	LF	0	0	0	0	65,255	<b>65,255</b>
<b>Total</b>		<b>0</b>	<b>0</b>	<b>0</b>	<b>0</b>	<b>326,274</b>	<b>326,274</b>
<i>Prior Cost &lt; 2016/17</i>		<i>0</i>	<i>Future Cost &gt; 2020/21</i>	<i>0</i>	<i>Total Project Cost</i>		<i>326,274</i>



Phase	Fund Source	2016/17	2017/18	2018/19	2019/20	2020/21	Total
<b>MARION COUNTY AIRPORT AT FUEL STORAGE AREA - 4384321</b>							<b>*Non-SIS*</b>
<b>AVIATION REVENUE/OPERATIONAL</b>					<b>LRTP No: Goal 1:</b>	<b>Length: .000</b>	
<b>Responsible Agency: Marion County</b>							
CAP	DPTO	0	167,200	0	0	0	<b>167,200</b>
CAP	LF	0	41,800	0	0	0	<b>41,800</b>
<b>Total</b>		<b>0</b>	<b>209,000</b>	<b>0</b>	<b>0</b>	<b>0</b>	<b>209,000</b>
<i>Prior Cost &lt; 2016/17</i>		<i>0</i>	<i>Future Cost &gt; 2020/21</i>	<i>0</i>	<i>Total Project Cost</i>		<i>209,000</i>

<b>MARION COUNTY AIRPORT AT PARALLEL TAXIWAY TO RUNWAY 5-23 - 4370241</b>							<b>*Non-SIS*</b>
<b>AVIATION SAFETY PROJECT</b>					<b>LRTP No: Goal 1:</b>	<b>Length: .000</b>	
<b>Responsible Agency: Marion County</b>							
CAP	DPTO	0	13,600	185,190	0	0	<b>198,790</b>
CAP	LF	0	3,400	46,297	0	0	<b>49,697</b>
CAP	FAA	0	153,000	2,083,385	0	0	<b>2,236,385</b>
<b>Total</b>		<b>0</b>	<b>170,000</b>	<b>2,314,872</b>	<b>0</b>	<b>0</b>	<b>2,484,872</b>
<i>Prior Cost &lt; 2016/17</i>		<i>0</i>	<i>Future Cost &gt; 2020/21</i>	<i>0</i>	<i>Total Project Cost</i>		<i>2,484,872</i>

<b>MARION COUNTY AIRPORT FROM LANDSIDE ACCESS &amp; PARKING IMPROVEMENTS TO PHASE II - 4384271</b>							<b>*Non-SIS*</b>
<b>AVIATION REVENUE/OPERATIONAL</b>					<b>LRTP No: Goal 1:</b>	<b>Length: .000</b>	
<b>Responsible Agency: Marion County</b>							
CAP	DPTO	0	0	0	0	247,098	<b>247,098</b>
CAP	LF	0	0	0	0	61,775	<b>61,775</b>
<b>Total</b>		<b>0</b>	<b>0</b>	<b>0</b>	<b>0</b>	<b>308,873</b>	<b>308,873</b>
<i>Prior Cost &lt; 2016/17</i>		<i>0</i>	<i>Future Cost &gt; 2020/21</i>	<i>0</i>	<i>Total Project Cost</i>		<i>308,873</i>

Phase	Fund Source	2016/17	2017/18	2018/19	2019/20	2020/21	Total
<b>MARION COUNTY AIRPORT AT SECURITY IMPROVEMENTS - 4384331</b>							<b>*Non-SIS*</b>
<b>AVIATION SECURITY PROJECT</b>					<b>LRTP No: Goal 1:</b>	<b>Length: .000</b>	
<b>Responsible Agency: Marion County</b>							
CAP	DPTO	0	0	0	93,573	0	<b>93,573</b>
CAP	LF	0	0	0	23,393	0	<b>23,393</b>
<b>Total</b>		<b>0</b>	<b>0</b>	<b>0</b>	<b>116,966</b>	<b>0</b>	<b>116,966</b>
<i>Prior Cost &lt; 2016/17</i>		<i>0</i>	<i>Future Cost &gt; 2020/21</i>	<i>0</i>	<i>Total Project Cost</i>		<i>116,966</i>
<b>MARION-DUNNELLON AT LANDSIDE ACCESS &amp; PARKING IMPROVEMENTS - 4384301</b>							<b>*Non-SIS*</b>
<b>AVIATION REVENUE/OPERATIONAL</b>					<b>LRTP No: Goal 1:</b>	<b>Length: .000</b>	
<b>Responsible Agency: Marion County</b>							
CAP	DPTO	0	0	0	441,937	0	<b>441,937</b>
CAP	LF	0	0	0	110,484	0	<b>110,484</b>
<b>Total</b>		<b>0</b>	<b>0</b>	<b>0</b>	<b>552,421</b>	<b>0</b>	<b>552,421</b>
<i>Prior Cost &lt; 2016/17</i>		<i>0</i>	<i>Future Cost &gt; 2020/21</i>	<i>0</i>	<i>Total Project Cost</i>		<i>552,421</i>
<b>MARION-DUNNELLON PARALLEL TAXIWAY TO RUNWAY 9-27 AT PARALLEL TAXIWAY TO RUNWAY 9-27 - 4384351</b>							<b>*Non-SIS*</b>
<b>AVIATION CAPACITY PROJECT</b>					<b>LRTP No: Goal 1:</b>	<b>Length: .000</b>	
<b>Responsible Agency: Marion County</b>							
CAP	DPTO	0	0	0	0	97,726	<b>97,726</b>
CAP	LF	0	0	0	0	24,431	<b>24,431</b>
<b>Total</b>		<b>0</b>	<b>0</b>	<b>0</b>	<b>0</b>	<b>122,157</b>	<b>122,157</b>
<i>Prior Cost &lt; 2016/17</i>		<i>0</i>	<i>Future Cost &gt; 2020/21</i>	<i>0</i>	<i>Total Project Cost</i>		<i>122,157</i>

Phase	Fund Source	2016/17	2017/18	2018/19	2019/20	2020/21	Total
<b>OCALA INTERNATIONAL AIRPORT AT NORTH INDUSTRIAL PARK ACCESS ROAD - 4384771</b>							<b>*Non-SIS*</b>
<b>AVIATION REVENUE/OPERATIONAL</b>					<b>LRTP No: Goal 1:</b>	<b>Length: .000</b>	
<b>Responsible Agency: City of Ocala</b>							
CAP	DPTO	0	0	0	0	355,230	<b>355,230</b>
CAP	LF	0	0	0	0	355,231	<b>355,231</b>
<b>Total</b>		<b>0</b>	<b>0</b>	<b>0</b>	<b>0</b>	<b>710,461</b>	<b>710,461</b>
<i>Prior Cost &lt; 2016/17</i>		<i>0</i>	<i>Future Cost &gt; 2020/21</i>	<i>0</i>	<i>Total Project Cost</i>		<i>710,461</i>
<b>OCALA INTERNATIONAL AIRPORT AT WEST INDUSTRIAL PARK ACCESS ROAD - 4384761</b>							<b>*Non-SIS*</b>
<b>AVIATION REVENUE/OPERATIONAL</b>					<b>LRTP No: Goal 1:</b>	<b>Length: .000</b>	
<b>Responsible Agency: City of Ocala</b>							
CAP	DPTO	0	0	0	0	515,877	<b>515,877</b>
CAP	LF	0	0	0	0	515,877	<b>515,877</b>
<b>Total</b>		<b>0</b>	<b>0</b>	<b>0</b>	<b>0</b>	<b>1,031,754</b>	<b>1,031,754</b>
<i>Prior Cost &lt; 2016/17</i>		<i>0</i>	<i>Future Cost &gt; 2020/21</i>	<i>0</i>	<i>Total Project Cost</i>		<i>1,031,754</i>
<b>OCALA INTERNATIONAL AIRPORT AT AIRPORT IMPROVEMENT PROJECT - 4315861</b>							<b>*Non-SIS*</b>
<b>AVIATION SAFETY PROJECT</b>					<b>LRTP No: Goal 1:</b>		
<b>Responsible Agency: City of Ocala</b>							
CAP	DPTO	1,000,000	0	0	0	0	<b>1,000,000</b>
CAP	LF	1,000,000	0	0	0	0	<b>1,000,000</b>
<b>Total</b>		<b>2,000,000</b>	<b>0</b>	<b>0</b>	<b>0</b>	<b>0</b>	<b>2,000,000</b>
<i>Prior Cost &lt; 2016/17</i>		<i>2,400,000</i>	<i>Future Cost &gt; 2020/21</i>	<i>0</i>	<i>Total Project Cost</i>		<i>4,400,000</i>

Phase	Fund Source	2016/17	2017/18	2018/19	2019/20	2020/21	Total
<b>OCALA INTERNATIONAL AIRPORT AT LAND ACQUISITION - 4370171</b>							<b>*Non-SIS*</b>
<b>AVIATION ENVIRONMENTAL PROJECT</b>		<b>LRTP No: Goal 1:</b>				<b>Length: .000</b>	
<b>Responsible Agency: City of Ocala</b>							
CAP	DPTO	0	500,000	0	0	0	<b>500,000</b>
CAP	LF	0	125,000	375,000	400,000	0	<b>900,000</b>
CAP	DDR	0	0	1,500,000	1,600,000	0	<b>3,100,000</b>
<b>Total</b>		<b>0</b>	<b>625,000</b>	<b>1,875,000</b>	<b>2,000,000</b>	<b>0</b>	<b>4,500,000</b>
<i>Prior Cost &lt; 2016/17</i>		<i>0</i>	<i>Future Cost &gt; 2020/21</i>		<i>0</i>	<i>Total Project Cost</i>	<i>4,500,000</i>

Phase	Fund Source	2016/17	2017/18	2018/19	2019/20	2020/21	Total
<b>OCALA INTERNATIONAL AIRPORT AT TAXIWAY "A" REHABILITATION - 4370311</b>							<b>*Non-SIS*</b>
<b>AVIATION PRESERVATION PROJECT</b>		<b>LRTP No: Goal 1:</b>				<b>Length: .000</b>	
<b>Responsible Agency: City of Ocala</b>							
CAP	DPTO	0	608,731	0	0	0	<b>608,731</b>
CAP	LF	0	152,183	0	0	0	<b>152,183</b>
CAP	FAA	0	6,848,223	0	0	0	<b>6,848,223</b>
<b>Total</b>		<b>0</b>	<b>7,609,137</b>	<b>0</b>	<b>0</b>	<b>0</b>	<b>7,609,137</b>
<i>Prior Cost &lt; 2016/17</i>		<i>748,000</i>	<i>Future Cost &gt; 2020/21</i>		<i>0</i>	<i>Total Project Cost</i>	<i>8,357,137</i>

**Section 6 - Transit Projects**

---

Phase	Fund Source	2016/17	2017/18	2018/19	2019/20	2020/21	Total
<b>MARION TRANSIT FROM RURAL TRANSPORTATION TO SECTION 5311 - 4333121</b>							<b>*Non-SIS*</b>
<b>OPERATING/ADMIN. ASSISTANCE</b>		<b>LRTP No: Goal 1:</b>				<b>Length: .000</b>	
<b>Responsible Agency: Ocala/Marion TPO</b>							
OPS	DU	0	980,500	1,029,525	1,081,001	1,149,456	<b>4,240,482</b>
OPS	LF	0	980,500	1,029,525	1,081,001	1,149,456	<b>4,240,482</b>
<b>Total</b>		<b>0</b>	<b>1,961,000</b>	<b>2,059,050</b>	<b>2,162,002</b>	<b>2,298,912</b>	<b>8,480,964</b>
<i>Prior Cost &lt; 2016/17</i>		<i>0</i>	<i>Future Cost &gt; 2020/21</i>		<i>0</i>	<i>Total Project Cost</i>	<i>8,480,964</i>

<b>MARION TRANSIT FROM TRANSIT OPERATING TO SECTION 5311 - 4241211</b>							<b>*Non-SIS*</b>
<b>OPERATING/ADMIN. ASSISTANCE</b>		<b>LRTP No: Goal 1:</b>					
OPS	DU	770,718	0	0	0	0	<b>770,718</b>
OPS	LF	770,718	0	0	0	0	<b>770,718</b>
<b>Total</b>		<b>1,541,436</b>	<b>0</b>	<b>0</b>	<b>0</b>	<b>0</b>	<b>1,541,436</b>
<i>Prior Cost &lt; 2016/17</i>		<i>5,360,072</i>	<i>Future Cost &gt; 2020/21</i>		<i>0</i>	<i>Total Project Cost</i>	<i>6,901,508</i>

<b>MARION TRANSIT SERVICES FROM CAPITAL TO SECTION 5339 - 4388661</b>							<b>*Non-SIS*</b>
<b>SMALL URBAN CAPITAL</b>		<b>LRTP No: Goal 1:</b>					
<b>Responsible Agency: Marion County</b>							
CAP	LF	97,233	0	0	0	0	<b>97,233</b>
CAP	DU	293,770	0	0	0	0	<b>293,770</b>
<b>Total</b>		<b>391,003</b>	<b>0</b>	<b>0</b>	<b>0</b>	<b>0</b>	<b>391,003</b>
<i>Prior Cost &lt; 2016/17</i>		<i>306,451</i>	<i>Future Cost &gt; 2020/21</i>		<i>0</i>	<i>Total Project Cost</i>	<i>697,454</i>

Phase	Fund Source	2016/17	2017/18	2018/19	2019/20	2020/21	Total
<b>MARION TRANSIT SERVICES - 4352108</b>							<b>*Non-SIS*</b>
<b>Responsible Agency: CAPITAL</b>							
CAP	DPTO	38,575	0	0	0	0	<b>38,575</b>
CAP	LF	38,575	0	0	0	0	<b>38,575</b>
CAP	DU	308,600	0	0	0	0	<b>308,600</b>
<b>Total</b>		<b>385,750</b>	<b>0</b>	<b>0</b>	<b>0</b>	<b>0</b>	<b>385,750</b>
<i>Prior Cost &lt; 2016/17</i>		<i>0</i>	<i>Future Cost &gt; 2020/21</i>		<i>0</i>	<i>Total Project Cost</i>	<i>385,750</i>

<b>SUNTRAN FROM URBAN CAPITAL FIXED ROUTE TO FTA SECTION 5307 - 4271882</b>							<b>*Non-SIS*</b>
<b>CAPITAL FOR FIXED ROUTE</b>				<b>LRTP No: Goal 1:</b>			
<b>Responsible Agency: Ocala/Marion TPO</b>							
CAP	FTA	2,019,680	0	0	0	0	<b>2,019,680</b>
CAP	LF	504,920	0	0	0	0	<b>504,920</b>
<b>Total</b>		<b>2,524,600</b>	<b>0</b>	<b>0</b>	<b>0</b>	<b>0</b>	<b>2,524,600</b>
<i>Prior Cost &lt; 2016/17</i>		<i>4,145,318</i>	<i>Future Cost &gt; 2020/21</i>		<i>0</i>	<i>Total Project Cost</i>	<i>6,669,918</i>

<b>SUNTRAN - 4355171</b>							<b>*Non-SIS*</b>
<b>CAPITAL FOR FIXED ROUTE</b>				<b>LRTP No: Goal 1:</b>		<b>Length: .000</b>	
<b>Responsible Agency: Ocala/Marion TPO</b>							
CAP	SA	0	0	3,600,000	0	0	<b>3,600,000</b>
CAP	LF	0	0	900,000	0	0	<b>900,000</b>
<b>Total</b>		<b>0</b>	<b>0</b>	<b>4,500,000</b>	<b>0</b>	<b>0</b>	<b>4,500,000</b>
<i>Prior Cost &lt; 2016/17</i>		<i>0</i>	<i>Future Cost &gt; 2020/21</i>		<i>0</i>	<i>Total Project Cost</i>	<i>4,500,000</i>

Phase	Fund Source	2016/17	2017/18	2018/19	2019/20	2020/21	Total
<b>SUNTRAN FROM OPERATING FIXED ROUTE TO SECTION 5307 - 4333041</b>							<b>*Non-SIS*</b>
<b>OPERATING FOR FIXED ROUTE</b>		<b>LRTP No: Goal 1:</b>				<b>Length: .000</b>	
<b>Responsible Agency: Ocala/Marion TPO</b>							
OPS	DPTO	0	612,464	632,684	664,318	772,875	<b>2,682,341</b>
OPS	LF	0	612,464	637,745	664,318	772,875	<b>2,687,402</b>
OPS	FTA	0	400,000	400,000	400,000	0	<b>1,200,000</b>
<b>Total</b>		<b>0</b>	<b>1,624,928</b>	<b>1,670,429</b>	<b>1,728,636</b>	<b>1,545,750</b>	<b>6,569,743</b>
<i>Prior Cost &lt; 2016/17</i>		<i>0</i>	<i>Future Cost &gt; 2020/21</i>		<i>0</i>	<i>Total Project Cost</i>	<i>6,569,743</i>

Phase	Fund Source	2016/17	2017/18	2018/19	2019/20	2020/21	Total
<b>SUNTRAN FROM OPERATING FIXED ROUTE TO SECTION 5307 - 4241231</b>							<b>*Non-SIS*</b>
<b>OPERATING FOR FIXED ROUTE</b>		<b>LRTP No: Goal 1:</b>					
<b>Responsible Agency: Ocala/Marion TPO</b>							
OPS	DPTO	588,664	0	0	0	0	<b>588,664</b>
OPS	LF	601,806	0	0	0	0	<b>601,806</b>
OPS	FTA	400,000	0	0	0	0	<b>400,000</b>
<b>Total</b>		<b>1,590,470</b>	<b>0</b>	<b>0</b>	<b>0</b>	<b>0</b>	<b>1,590,470</b>
<i>Prior Cost &lt; 2016/17</i>		<i>6,578,158</i>	<i>Future Cost &gt; 2020/21</i>		<i>0</i>	<i>Total Project Cost</i>	<i>8,168,628</i>



## Project Index

FM #	TIP #	Project Name	Page
2386481		US 41	1-37
2386511		SR 200	
2386771		SR 35	
2386772		SR 35 (BASELINE RD) FROM S CR464(MARICAMP RD) TO NE 24TH ST	
2386773		SR 35 (BASELINE RD) FROM NE 24TH ST TO SR 40	
2386774		SE 92ND LOOP (BELLEVIEW BELTWAY)	
2386781		SR 500 US 27 NORTH OF CR 326 NORTH OF CR 464B	
2386782		US 27	
2386931		SR 35	1-23
2387191		SR 40	1-24
2387201		SR 40	
4106741		SR 40	
4106742		SR 40	1-25
4106743		SR 40	
4130194		TRAFFIC SIGNALIZATION	3-3
4136153		LIGHTING AGREEMENTS	3-2
4144471		OCALA INTERNATIONAL AIRPORT	
4162201		SR 326	
4179601		OCALA/MARION UPWP	2-2
4181071		PRIMARY IN HOUSE	3-3
4195841		US 41	
4224401		OCALA/MARION UPWP	
4233911		FERTILIZER APPL.	
4233912		ASPHALT RESURFACING	3-2
4233913		SIDEWALK REPLACEMENT	
4233914		DITCH PAVEMENT REPLACEMENT	
4241211		MARION TRANSIT	6-2

## Project Index

FM #	TIP #	Project Name	Page
4241231		SUNTRAN	6-4
4241861		SE 92ND LOOP (BELLEVIEW BELTWAY)	
4242831		US 441	
4248851		SR 35	
4261791		SILVER SPRINGS STATE PARK PEDESTRIAN BRIDGES	
4271881		SUNTRAN	
4271881		SUNTRAN	
4271882		SUNTRAN	6-3
4272491		US 301	
4272731		SR 35	
4272801		US 441	
4278391		AESTHETICS - AREA WIDE	
4278392		PERFORMANCE AESTHETICS	3-3
4282132		I-75	
4290531		US 27	
4290831		US 27	
4291781		UNPAVED SHOULDER REPAIR	3-4
4291821		PAVEMENT MARKINGS -	3-2
4293631		SR 40	
4295821		I-75 (AT SW 95TH STREET)	1-11
4295861		CR 225	
4297271		I-75	
4302521		OCALA/MARION COUNTY ITS	
4303553		SR 40	
4306431		I-75	
4306551		SR 492	1-31
4306561		SR 40	

## Project Index

FM #	TIP #	Project Name	Page
4309861		US 41	
4311421		CR 314A	
4314011		TPO PLANNING STUDIES	2-2
4315491		MARION COUNTY AIRPORT	5-3
4315501		DUNNELLON MUNICIPAL AIRPORT	
4315511		DUNNELLON MUNICIPAL AIRPORT	
4315521		MARION COUNTY AIRPORT	
4315541		MARION COUNTY AIRPORT	
4315551		MARION COUNTY AIRPORT	
4315861		OCALA INTERNATIONAL AIRPORT	5-6
4317971		NE 25TH AVENUE	
4317981		NE 36TH AVENUE	
4317982		NE 36TH AVENUE	
4317983		NE 36TH AVENUE	1-15
4317984		NE 36TH AVENUE	
4319111		SR 40	
4319351		SR 40 DOWNTOWN OCALA	1-28
4324211		SR 40	
4325401		US 41	
4332061		CR 484	
4333041		SUNTRAN	6-4
4333121		MARION TRANSIT	6-2
4335171		MARION COUNTY AIRPORT	
4336511		CR 484	
4336512		CR 484	1-4
4336521		SR 40	1-26
4336601		US 441	1-38

## Project Index

FM #	TIP #	Project Name	Page
4336611		US 441	1-40
4336651		SR 40 CORRIDOR OPERATIONS IMPROVEMENT	
4336801		US 27	1-36
4344081		SR 40	1-27
4348441		CR 42	
4348441		CR 42	1-2
4349551		CR 328	
4349561		E MC KINNEY AVE	
4350571		I-75	1-9
4352081		SR 35	1-22
4352091		I-75 (AT NW 49TH STREET)	1-10
4352108		MARION TRANSIT SERVICES	6-3
4354661		I-75	
4354841		PRUITT TRAIL	4-7
4354861		SILVER SPRINGS BIKEWAY	4-9
4354901		SR 40	
4354921		SR 40 INTERSECTION IMPROVEMENTS	
4354921		SR 40	
4354922		SR 40 INTERSECTION IMPROVEMENTS	1-29
4355171		SUNTRAN	6-3
4355401		US 441	1-41
4355471		SW 44TH AVENUE	1-33
4355491		SW 49TH AVENUE	1-34
4356591		SR 200	
4356592		SR 200	1-19
4356602		SR 326	1-21
4356661		US 441	1-42

## Project Index

FM #	TIP #	Project Name	Page
4359491		PRUITT TRAIL	
4361861		SW 80TH AVENUE	
4362911		SANTOS GAP TRAIL	
4363581		LAND BRIDGE TRAIL	
4363601		SR 40 (BLACK BEAR TRAIL)	4-10
4363611		ITS OPERATIONAL SUPPORT	1-14
4363711		US 441	1-39
4363751		CITYWIDE SIDEWALK IMPROVEMENTS	4-3
4364071		US 441	
4364741		COUNTYWIDE SIDEWALK PROJECTS	
4364742		SADDLEWOOD ELEMENTARY SIDEWALK IMPROVEMENTS	4-8
4364743		LEGACY ELEMENTARY SCHOOL SIDEWALKS	4-6
4367551		INDIAN LAKE TRAIL FROM SILVER SPRINGS STATE PARK TO INDIAN LAKE PARK	4-5
4367561		DOWNTOWN OCALA TO SILVER SPRINGS TRAIL	4-4
4368791		SR 200	1-18
4369101		SE 2ND AVENUE	
4369111		NW 27TH AVENUE	
4369171		SE 8TH STREET	
4370111		MARION COUNTY AIRPORT	5-2
4370171		OCALA INTERNATIONAL AIRPORT	5-7
4370241		MARION COUNTY AIRPORT	5-4
4370311		OCALA INTERNATIONAL AIRPORT	5-7
4370321		OCALA INTERNATIONAL AIRPORT	
4371881		MARION TRANSIT SERVICES	
4371901		BELLEVIEW TO GREENWAY TRAIL	4-2
4373391		US 27	1-35
4373441		SR 200	1-20

## Project Index

FM #	TIP #	Project Name	Page
4378181		I-75	1-5
4378261		I-75 MARION COUNTY REST AREAS	1-13
4378271		I-75	1-8
4378281		I-75	1-6
4378291		I-75	1-7
4384171		MARION COUNTY AIRPORT	5-3
4384231		MARION COUNTY AIRPORT	5-2
4384251		MARION COUNTY AIRPORT	5-2
4384271		MARION COUNTY AIRPORT	5-4
4384281		MARION COUNTY AIRPORT	5-3
4384301		MARION-DUNNELLON	5-5
4384321		MARION COUNTY AIRPORT	5-4
4384331		MARION COUNTY AIRPORT	5-5
4384351		MARION-DUNNELLON PARALLEL TAXIWAY TO RUNWAY 9-27	5-5
4384761		OCALA INTERNATIONAL AIRPORT	5-6
4384771		OCALA INTERNATIONAL AIRPORT	5-6
4385521		SR 492	1-32
4385541		SR 464	1-30
4385581		NORTH MAGNOLIA AVENUE	1-17
4385591		NE 9TH STREET	1-16
4385621		I-75 MARION COUNTY REST AREAS	1-12
4385671		CR 42	1-3
4388661		MARION TRANSIT SERVICES	6-2
4393311		OCALA/MARION URBAN AREA FY 2016/2017-2017/2018 UPWP	2-2

June 6, 2016

**CONSTRUCTION**

Financial Project No.	Description	Work Mix Description	Contractor Name	Original Amount	Original Contract	Work Begin	Status	Lane Closures
238693-1	SR 35 (Baseline Road) from SE 92nd Loop to SR 464	ADD LANES & RECONSTRUCT	D.A.B. CONSTRUCTORS, INC.	\$17,605,644.00	850	8/28/2015	Time started on 8/28/2015 with design. Working with utilities on relocation and drainage issues. Working in basin 1 and 2 with drainage placement. Working on drainage basin issues with 3, 4, 5 and 6 in design.	N/A
238719-1	SR 40 Widening from CR 328 to SW 80th Ave (CR 225A)	ADD LANES & RECONSTRUCT	D.A.B. CONSTRUCTORS, INC.	\$12,324,444.44	490	05/28/14	Completed on 4/25/2016	N/A
427280-1	US 441 (SR 25) from NW 35th to CR 25A	RESURFACING	ANDERSON COLUMBIA CO., INC.	\$8,636,536.00	340	11/29/2015	Contractor is working on milling and resurfacing and new shoulder placement.	Northbound and southbound single lane closures on US 441 (SR 25) from NW 114th Street north to County Road 25A, and US 441 at NW 100th St. From 7 a.m. to 5 p.m., contractor will be constructing the inside paved shoulder, adding turn lanes and constructing a directional median opening at NW 100th Street, and performing drainage work at CR 25A North.
428213-2	I-75 (SR 93) FROM SR 44 TO NORTH OF US 27	ITS COMMUNICATION SYSTEM	TRAFFIC CONTROL DEVICES, INC.	\$3,499,000.00	400	09/17/15	Working on setting cabinets and pull boxes and pulling in fiber optic cables.	N/A
429053-1 429083-1	US 27 (SR 500) from CR 326 to CR 225A US 27 (SR 500) from CR 225A to SR 200 (Pine Avenue)	RESURFACING	ANDERSON COLUMBIA CO., INC.	\$13,950,000.00	352	02/05/15	Completed on 5/6/2016.	
430643-1	I-75 from North of US 27 Interchange to the Alachua County Line	RESURFACING	ANDERSON COLUMBIA CO., INC.	\$26,022,554.27	520	6/27/2015	Started milling and resurfacing going south and north bound on the outside and middle lanes. This is completed with a dual lane closure. Working on ramp widening at SR 326 and CR 318	Southbound single outside lane closure starting at 7:30 p.m. to 6 a.m. on I-75 from two miles north of SR 326 to one mile north of US 27. Contractor will be milling and paving outside lane and shoulder.
430656-1	SR 40 fro NW/SW 52nd Ave to 500' East of the I-75 Bridge	RESURFACING	Masci General Contractors	\$1,793,083.65	220	2/8/2016	Working on sidewalk and drainage placement and base. Starting to mill and pave asphalt.	N/A
423391-2	Asphalt Resurfacing Various Locations: SR200, SR 464, SR 40 & US 441	MAINTENANCE	D.A.B. CONSTRUCTORS, INC.	\$488,888.00	70		Milling and resurfacing in various locations. Estimated start date late June.	N/A
432421-1	SR 40 from NE 25th Ave to West of NE 10th Street	INTERSECTION IMPROVEMENTS	Masci General Contractor	\$1,085,603.74			On hold until October. Working with City of Ocala Drainage project.	N/A
433665-1	SR 40 from US 441 to NW 1st Ave	INTERSECTION IMPROVEMENTS	Maer Homes	\$408,828.00	120	2/15/2016	Working on concrete work and signal work.	From 7 p.m. to 7 a.m., single lane closure on SR 40 between Pine Avenue (US 441) and Magnolia Avenue for turn lane and median modifications and signalization work
435466-1	Landscaping at I 75 at SR 200 and US 27	Landscaping	Gainesville Landscape Contractors	\$594,750.00	870	08/21/15	Contract in establishment time frame now.	N/A

**TRAFFIC OPERATIONS**

Financial Project No.	Description	Status
436129-1	SR 200 at SW 60th Avenue Traffic Ops	Construct westbound left turn lanes design plans under review. A milling and resurfacing project that ends at the intersection will pick up the eastbound dual lefts (and modifications to the southbound median), design scheduled FY 2016 and construction scheduled for FY 2019 (436879-1). Started on 4/18/2016 Time is 60 day contract for P&S Paving (turn lane)
	CR 326 at US 27-change flashing beacon to full signal	Under construction, the work order was issued to the contractor (TCD) on 6/1, with a due date of September 3rd.
	US 41 Dunnellon pedestrian crossing RRFB's- Withlacoochee River to River Drive	Currently in the design phase, TEDS is the design firm.
	SR 40 and SW 140th Avenue - change flashing beacon to full signal	This project is currently in the design phase.

Contact Information:

Kellie Smith, TPO Liaison  
386-943-5427  
[kellie.smith@dot.state.fl.us](mailto:kellie.smith@dot.state.fl.us)

Mike McCammon, Ocala Operations Engineer  
(352) 620-3001  
[Michael.McCammon@dot.state.fl.us](mailto:Michael.McCammon@dot.state.fl.us)

For additional information please go to [www.cflroads.com](http://www.cflroads.com)

## I-75 Relief - Meetings

### Future Task Force Meetings

---

<b>Date</b>	<b>County</b>	<b>Location</b>	<b>Time</b>
<b>Friday, June 24, 2016</b>	Levy County	<b>Williston Crossings RV Resort (Clubhouse)</b>	9:00 AM to 1:00 PM
<b>Friday, August 12, 2016</b>	Marion County	<b>Southeastern Livestock Pavilion (Auditorium)</b>	9:00 AM to 4:30 PM