

OCALA-MARION TPO ACTIVE TRANSPORTATION PLAN



PUBLIC SURVEY SUMMARY RESULTS

PUBLIC SURVEY & COMMENT MAP



Public Online Survey Communication

- Social Media Posts/Adds
 - 1,700+ Accounts Reached
 - 2,100+ Impressions
- Partner, Mayor Marciano Shares
- Email Blasts, Website Front Page



Seeking your Input!

The Ocala Marion TPO is kicking off the Active Transportation Plan. We are seeking public input on all things Pedestrian, Cyclists, and Equestrian Riders. Please visit the project page, take the survey, or add a comment to the comment map.

Follow
the links
in the
post!



PUBLIC SURVEY & COMMENT MAP



September 18, 2024 to February 28, 2025

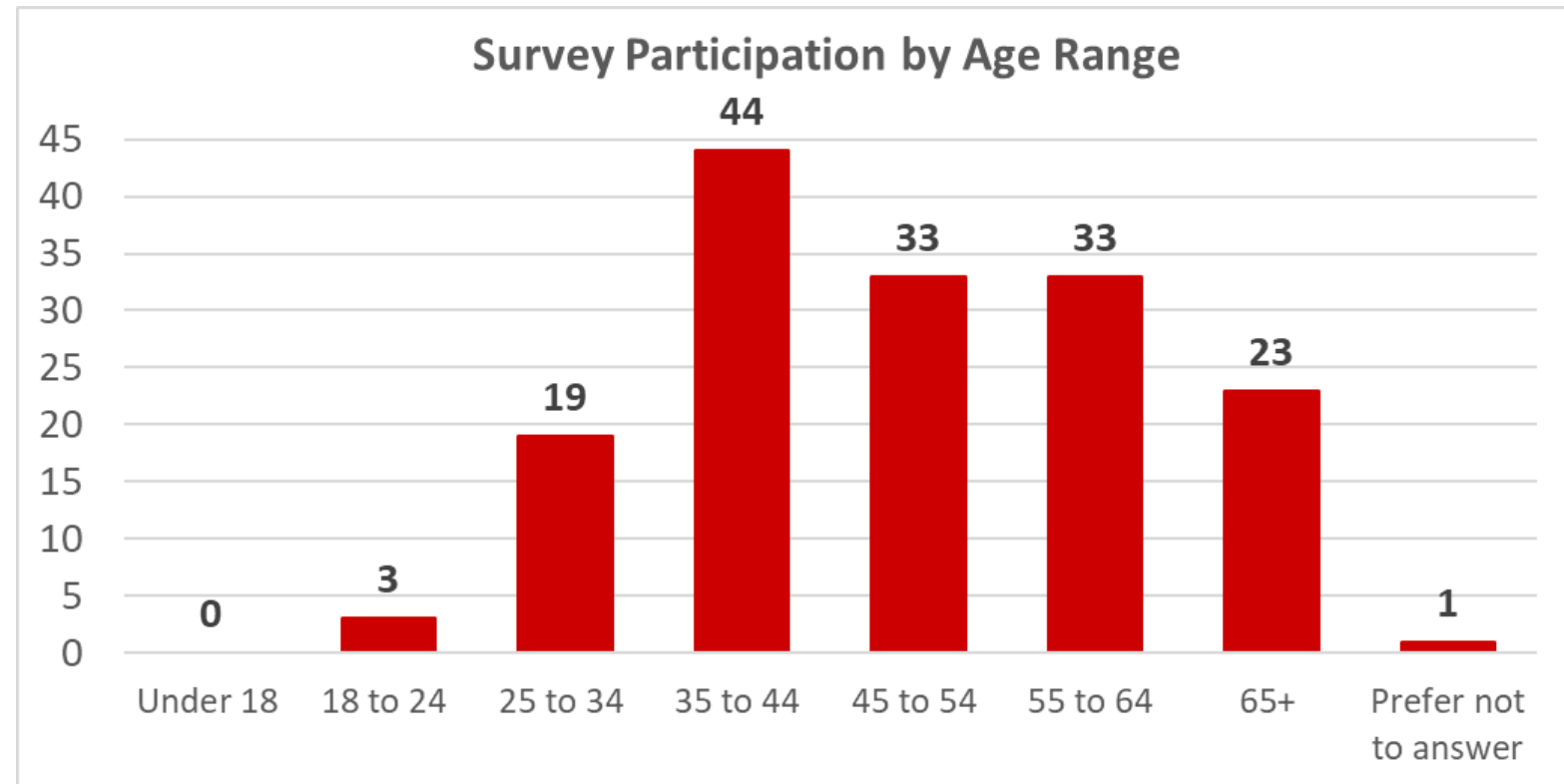
- 158 Survey Participants
- 29 Comment Map Responses
- 67 Additional Comments in survey

PUBLIC SURVEY & COMMENT MAP



Public Online Survey Highlights

- Age Range of Participants
35-44 (1)



PUBLIC SURVEY & COMMENT MAP



■ Zip Code Locations

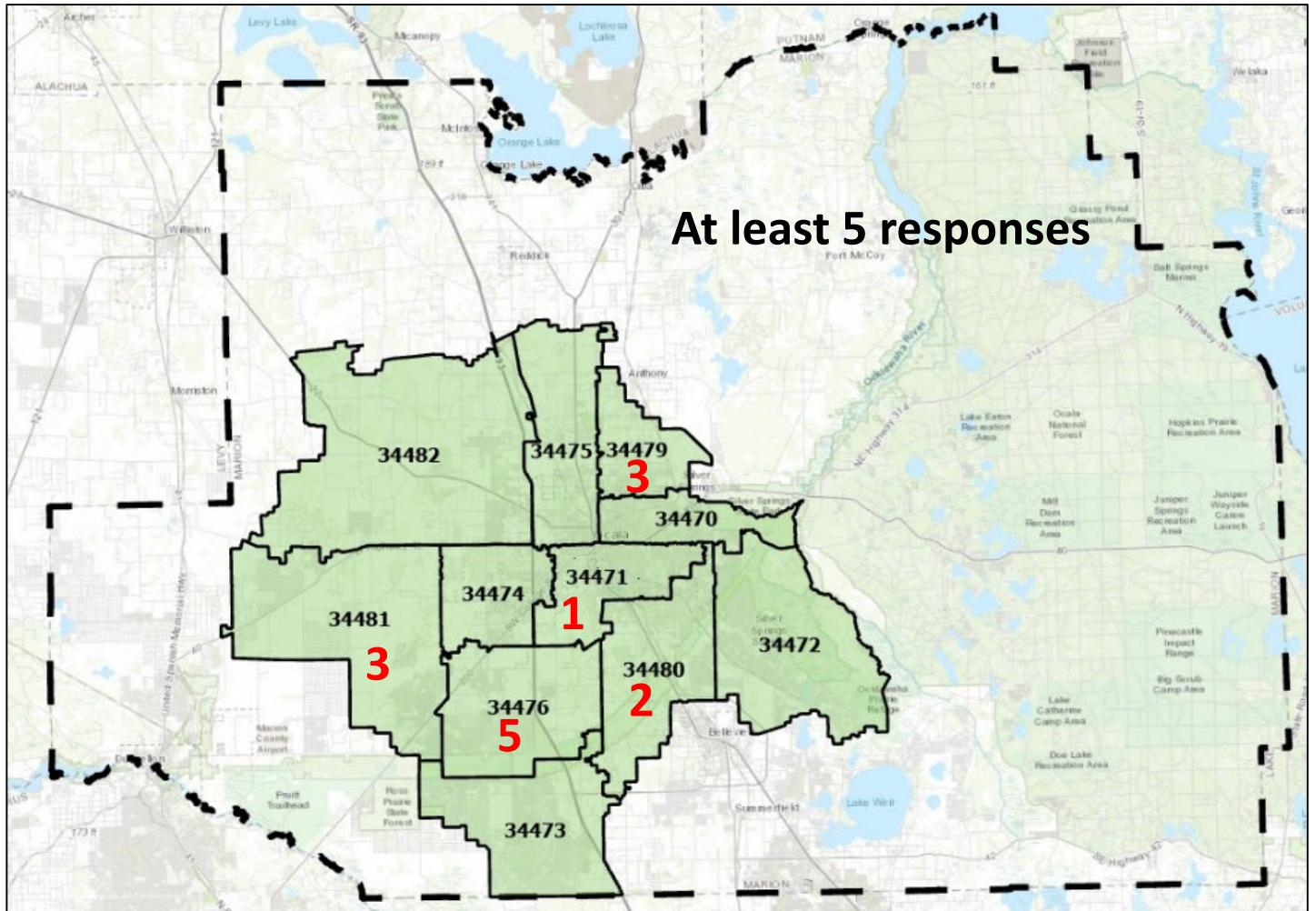
34471 (31)

34480 (19)

34470 (13)

34481 (13)

34476 (12)



PUBLIC SURVEY & COMMENT MAP



Top Two Land Uses to Connect to...

- 1. Recreational Facilities (trails, parks) (25%)**
- 2. Shopping/Groceries (16%)**
3. Neighborhoods (14%)
4. Schools/Colleges (13%)
5. Work (13%)

PUBLIC SURVEY & COMMENT MAP



How much does _____ improve your quality of life, health and well being? (1 to 10)

- Walking/Hiking: 8.4
- Biking: 7.7
- Horseback Riding: 6.4

PUBLIC SURVEY & COMMENT MAP



Walk/Hike

Why do you walk or hike? (Top 2)

1. Exercise (43%)
2. Recreation (32%)

How Often do you walk or hike? (Top 2)

1. A few times a week (39%)
2. Every day (36%)

PUBLIC SURVEY & COMMENT MAP



Walk/Hike

Top 3 Improvements to support more walking/hiking

1. Add more sidewalks/close gaps (18%)
2. Expand/add trails (16%)
3. Better lighting (14%)

PUBLIC SURVEY & COMMENT MAP



Biking

Why do you bike? (Top 2)

1. Exercise (41%)
2. Recreation (35%)

How Often do you bike? (Top 2)

1. A few times a week (33%)
2. A few times a month (29%)

PUBLIC SURVEY & COMMENT MAP



Biking

Top 3 Improvements to support more biking

1. More protected bike lanes (17%)
2. Expand/add trails (15%)
3. Sidewalks/shared use paths (13%)

PUBLIC SURVEY & COMMENT MAP



Horseback Riding

Improvements:

1. Better access to trails (18%)
2. More separated horse trails (16%)
3. Improved amenities for horses (16%)
4. Safe horse crossings (14%)
5. Affordable horse rentals (14%)

PUBLIC SURVEY & COMMENT MAP



Comment Map Highlights

■ Pedestrian (17)

- Crosswalks, sidewalks, access, lighting

■ Cyclist (7)

- Roadway curves, lack of facilities, underpass/connectivity

■ Other (5)

- Landbridge, rail-trail, 25th Avenue area-north (11)

