



## **CITIZENS ADVISORY COMMITTEE**

Ocala Citizens Service Center 201  
SE 3rd Street, Ocala FL 34471  
2<sup>nd</sup> Floor Training Room

**April 11, 2017**

### **AGENDA**

**1. CALL TO ORDER AND ROLL CALL**

**2. PROOF OF PUBLICATION**

**3. DISCUSSION ITEMS**

**A. FY 2023 PROJECT PRIORITIES**

*Staff will present the draft FY 2023 Project Priorities for review. The priorities will be brought back next month for final approval.*

**B. TRANSIT DEVELOPMENT PLAN (TDP) UPDATE**

*Staff will present an update to the TDP.*

**C. TRANSIT SHELTER INSTALLATION**

*Staff will present an update regarding the approved transit shelter installation.*

**4. COMMENTS BY FDOT**

**5. COMMENTS BY TPO STAFF**

**6. COMMENTS BY TAC MEMBERS**

**7. PUBLIC COMMENT (Limited to 5 minutes)**

**8. ADJOURNMENT**

If reasonable accommodations are needed for you to participate in this meeting, please call the TPO Office at (352)629-8297 forty-eight (48) hours in advance, so arrangements can be made.

*The next regular meeting of the Technical Advisory Committee will be held on  
**May 9, 2017.***



**April 6, 2017**

**TO: TAC/CAC Members**

**FROM: Kenneth Odom, Transportation Planner**

**RE: DRAFT FY 2023 Priority Projects**

---

The following pages contain a copy of the DRAFT FY 2023 Priority Projects, the 2017 'Off-System' Priority Projects and the 2017 'Trails' Priority Projects. There have been a number of changes to the priority lists this years including the addition of four new capital improvement projects to the FY 2023 Priorities and multiple types of additions to the 2017 'Off-System' Priority Projects.

The new projects have all been added at the end of the tables and TPO staff will give background information on each of the additions and any other changes to the priority lists. Please also note that we are providing this list to you this month, but we will not be requesting action until the May committee meetings. We are requesting that the committee members offer recommendations for priority rankings of each new project even though adoption of the priority lists will not occur until next month.

If you have any questions regarding the rankings or a specific project please contact me in our office at (629-8297).

Off-System Priorities

**2023 OFF-SYSTEM PRIORITIES**

Priority	Project	From	To	Length (mi)	Agency	Project Type	Phase	Phase Estimate	Notes
1	Osceola Linear Park	SE 3rd Street	NE 5th Street	0.52	Ocala	Linear Park	CST	\$ 700,000	Full remodel of the corridor to include multi-modal facilities.
2	SunTran Replacement Buses	-	-	-	SunTran	Transit	-	\$ 3,600,000	<u>Funded in FY 2019.</u> Replacement of 7 transit buses.
3	SW 49 <sup>th</sup> Avenue	SW 95th Street	Osceola Boulevard	4.1	MC	Capacity	CST	\$ 16,290,000	<u>Funded in FY 2019.</u> \$9.0M local funds, \$7.3 FDOT funds.
4	East Pennsylvania Avenue (CR 484) Bicycle Improvements	Rainbow River Bridge	US 41	0.8	City of Dunnellon	Bike Path	DES	\$ 75,000	Project to add bicycle path facilities and improved access to Blue Run Park.
5	Countywide ITS Operations & Maintenance	-	-	-	Ocala & MC	O/M	-	\$ 500,000	Annual allocation (\$250K each agency) for ITS Ops & Maintenance.
6	Sunset Harbor Road	@ US 301/441	-	-	MC	Traffic Ops	DES	\$ 150,000	Intersection operations improvements.
7	Sunrise/Horizon Schools	Marion Oaks Manor	Marion Golf Way	0.83	MC	Sidewalks	DES	\$ 325,000	Sidewalk construction.
8	CR 315 Resurfacing	CR 316	CR 318	9.9	MC	Resurfacing	CST	\$ 6,700,000	Reclaim, resurface, widen and add shoulders.
9	NW 110th Ave	N of SR 40	NW 21st Street	1.51	MC	Widen Shoulders	CST	TBD	Widen shoulders to mitigate roadway departure crashes.
10	Marion Oaks Boulevard	at CR 484	-	-	MC	Add Turn Lanes	DES	TBD	Add additional dedicated turn lanes on both corridors.
11	SE 113th St	Hames Road	SE 56th Avenue	0.14	City of Belleview	Sidewalk	DES	TBD	Add sidewalks on the north side of the corridor.
12	US 301	320' N of SE 62nd Ave Rd	SE 115th Lane	0.22	City of Belleview	Sidewalk	DES	TBD	Add sidewalks on the west side of the corridor.
13	NE 19th Avenue	SR 492	NE 28th St	0.99	City of Ocala	Sidewalk	DES	TBD	Add Sidewalks
14	City of Ocala Sidewalks	NE 7th St	NE 44th Ave	0.75	City of Ocala	Sidewalk	DES	TBD	Add Sidewalks

Ocala/Marion County TPO  
Regional Trail Priorities  
FY 2017

Priority	Project	From	To	Length (mi)	Regional Trail	Phase	Phase Estimate	Notes
1	Pruitt Trail	Bridges Road	SR 200	9.5	HOF	DES	\$ 3,325,000	Design and CST have been delayed due to ROW acquisition negotiations.
2	Silver Springs Bikeway - Phase I	Baseline Paved Trail - North Trailhead	Silver Springs State Park	7.5	HOF	DES	\$ 225,000	CST FY 2018 (\$75K)
3	Downtown Ocala Trail	Ocala City Hall	Silver Springs State Park	6	-	CST	\$ 180,000	DES FY 2020 (\$253K)
4	CR 484 - Pennsylvania Ave. Multi-Modal Improvements w/ Bridge Option	Blue Run Park	Mary Street	0.8	-	DES	\$ 75,000	Will redesign footprint of roadway to include multi-use trails, turn-lanes and access into Blue Run Park.
5	Indian Lake Trail	Silver Springs State Park	Indian Lake Trailhead	5	-	CST		Design funded in FY 2019. (\$155)
6	Silver Springs Bikeway Phase II	Baseline Paved Trail - North Trailhead	CR 42	18.5	HOF	DES	\$ 555,000	Multi-use trail along Ocklawaha River, south to CR 42.
7	Belleview Greenway Trail	Lake Lillian Park	Cross Florida Greenway	5.3	-	DES	\$ 159,000	Feasibility study FY 2018.
8	Ocala National Forest Trail	Silver Springs State Park	Wildcat Lake Boat Ramp (1 mi. east of SR 19)	27	HOF	PD&E	\$ 750,000	PD&E FY 2020.
9	Silver Springs to Hawthorne Trail	Silver Springs State Park		Approx. 30	-	PD&E	\$ 750,000	
<b>Funded Projects</b>								
	Land Bridge Gap	SR 200	SW 49th Avenue	8.25	HOF	DES/CST	\$ 3,300,000	Construction Underway.
	Santos West Gap	SW 49th Avenue	Santos Trail Head	7.4	HOF	DES/CST	\$ 2,200,000	Construction Underway.

CST - Construction

DEP - Department of Environmental Protection

DES - Design

HOF - Heart of Florida Loop

PD&E - Project Development & Environmental Study

ROW - Right-of-way

STJMMD - St. Johns Water Management District

OCALA/MARION COUNTY TPO  
DRAFT FY 2023 PRIORITY PROJECTS

RANK	ROAD SEGMENT	ROADWAY DATA							Improvement	PRIORITY YEAR PHASE FY 2022	COMMENTS		
		Length	# of Lanes	LOS Standard	LOS Volume (Capacity)	2014 Traffic Count	Volume/ Capacity Ratio	LOS				SIS	
1	NW 49th Street Interchange  (FDOT FM# 435209-1)	-	-	-	-	-	-	-	-	Yes	New Interchange	ROW/CST	Project Manager: Jazlyn Heywood MLOU Approved: 1/26/2015 Scheduled IJR Approval Date: June 2016 <i>Working with Marion County/FDOT to possibly expedite project schedule.</i>
	<b>Funding Status</b> IJR to be funded by Marion County	<b>PHASE</b>	<b>FY 16/17</b>	<b>FY 17/18</b>	<b>FY 18/19</b>	<b>FY 19/20</b>	<b>FY 20/21</b>	<b>FY 21/22</b>					
		PD&E	\$2,033,596										
2	SR 40/US 441 Intersection Op. Improvement I  NW 2nd St to SW Broadway Street (FDOT FM# 433661-1)	0.16	6	D	50,000	34,900	70%		C	No	Add Dedicated Turn Lanes, Pedestrian Improvements & Enhanced Illumination	FULLY FUNDED	Project Manager: Todd Alexander Plans Complete:12/2016 <i>Fully funded.</i>
		<b>PHASE</b>	<b>FY 16/17</b>	<b>FY 17/18</b>	<b>FY 18/19</b>	<b>FY 19/20</b>	<b>FY 20/21</b>	<b>FY 21/22</b>					
		ROW			\$255,000	\$235,000							
		CST					\$1,761,080						
3	US 441 Intersection Op. Improvement II  at SR 464 (FDOT FM# 433660-1)	NA	6	D	50,000	25,300	51%		C	No	Add Dedicated Turn Lanes and Pedestrian Improvements	CST	Project Manager: Todd Alexander Plans Complete:7/2016 <i>\$2,100,603 LRE</i>
		<b>PHASE</b>	<b>FY 16/17</b>	<b>FY 17/18</b>	<b>FY 18/19</b>	<b>FY 19/20</b>	<b>FY 20/21</b>	<b>FY 21/22</b>					
		ROW			\$363,709	\$280,000	\$232,744						
4	SR 35 Intersection Op. Improvement  at SR 25, Foss Rd., & Robinson Rd. (FDOT FM# 435208-1)	NA	2	D	14,800	16,500	111%		F	No	Add SB Right-Turn Lanes	ROW/CST	Project Manager: Amir Asgarinik Wait for finalized scope to determine if ROW is necessary.
		<b>PHASE</b>	<b>FY 16/17</b>	<b>FY 17/18</b>	<b>FY 18/19</b>	<b>FY 19/20</b>	<b>FY 20/21</b>	<b>FY 21/22</b>					
		PE			\$355,000								
5	SR 40 Downtown Multi-Modal Improvement  US 441 to NE 8th Avenue (FDOT FM# 431935-1)	0.63	4	D	32,400	34,700	107%		F	No	Pedestrian and Traffic Ops Improvements	CST	Project Manager: Matt Hassan
		<b>PHASE</b>	<b>FY 16/17</b>	<b>FY 17/18</b>	<b>FY 18/19</b>	<b>FY 19/20</b>	<b>FY 20/21</b>	<b>FY 21/22</b>					
		PE	\$952,753										
6	SR 40 East Multi-Modal Improvement  NE 49th Terrace to NE 60th Court (FDOT FM# 435490-1)	1.5	4	D	32,400	20,900	65%		C	No	Add turn-lanes, enhanced illumination, pedestrian safety measures and intersection reconstruction at SR 35.	PE	
7	SR 40 West Multi-Modal Improvement  CSX Rail Bridge to I-75	2.8	4	D	32,400	33,000	102%		F	No	Sidewalk Widening & Reconditioning	PE	

IJR - Interchange Justification Report  
PD and E - Project Development Enviro Study  
PE - Preliminary Engineering  
ROW - Right-of-Way Acquisition  
CST - Construction

OCALA/MARION COUNTY TPO  
DRAFT FY 2023 PRIORITY PROJECTS

RANK	ROAD SEGMENT	ROADWAY DATA								Improvement	PRIORITY YEAR PHASE FY 2022	COMMENTS
		Length	# of Lanes	LOS Standard	LOS Volume (Capacity)	2014 Traffic Count	Volume/Capacity Ratio	LOS	SIS			
9	<b>SR 200</b>											
	<b>CR 484 to Citrus County Line</b> (FDOT FM# 238651-1)	3.2	2	C	8,400	15,100	180%	F	No	Add 2 Lanes	CST	Project Manager: Naziru Isaac Plans Complete: 1/2017 Right of way complete <i>Estimate: \$34,465,223 (LRE 8/11/2015)</i>
10	<b>SR 40/I-75 Interchange Operational Improvements</b>											
	<b>SW 40<sup>th</sup> Avenue to SW 27<sup>th</sup> Avenue</b> (FDOT FM# 433652-1)	-	4	D	32,400	28,500	88%	D	Yes	Operations Improvements at I-75 interchange and at SW 27 <sup>th</sup> Ave intersection.	CST	Project Manager: Taleb Shams Plans complete: 5/2017 Right of way: FY 2018-2019
	<b>Funding Status</b>	<b>PHASE</b>	<b>FY 16/17</b>	<b>FY 17/18</b>	<b>FY 18/19</b>	<b>FY 19/20</b>	<b>FY 20/21</b>	<b>FY 21/22</b>				
		PE	\$12,567									
		ROW		\$80,000	\$43,600	\$3,420,000	\$1,274,359					
11	<b>CR 484/I-75 Interchange Operational Improvements</b>											
	<b>SW 20<sup>th</sup> Avenue Road to CR 475A</b> (FDOT FM# 433651-1 & -2 & -3)	-	4	D	32,400	28,100	87%	D	Yes	Operational/Capacity Improvements	ROW	Project Manager: Sarah Van Gundy Plans complete: 7/2017 <i>LF: \$4,393,910 (2nd ROW)</i>
	<b>Funding Status</b>	<b>PHASE</b>	<b>FY 16/17</b>	<b>FY 17/18</b>	<b>FY 18/19</b>	<b>FY 19/20</b>	<b>FY 20/21</b>	<b>FY 21/22</b>				
		PE	\$3,948									
		ROW					\$2,063,796					
		ROW					\$5,826,704					
12	<b>NE 36<sup>th</sup> Avenue</b>											
	<b>SR 492 to NE 35<sup>th</sup> Street</b> (FDOT FM# 431798-1) <i>PD&amp;E Underway</i> Project includes grade separation over CSX S line	1.6	2	D	14,040	11,700	83%	D	No	Add 2 Lanes	N/A	Project Manager: Jazlyn Heywood LDCA Scheduled Approval: 12/2015 Segment only for PD&E
	<b>Implementation Phases:</b>	<b>PHASE</b>	<b>FY 16/17</b>	<b>FY 17/18</b>	<b>FY 18/19</b>	<b>FY 19/20</b>	<b>FY 20/21</b>	<b>FY 21/22</b>				
		PD&E	\$21,343									
	<b>SR 492 to NE 20<sup>th</sup> Place (.4 miles)</b> (FDOT FM# 431798-2)									Add 2 Lanes	ROW	Project Manager: Heather Johnstone Plans complete: 5/2017
	<b>(.4 miles)</b> (FDOT FM# 431798-3) Project includes grade separation over CSX S line									Add 2 Lanes Rail Capacity Project	FULLY FUNDED	Project Manager: Heather Johnstone Plans complete: 5/2017
		PE	\$149,869									
		ROW	\$350,000	\$4,240,000	\$4,285,000	\$1,615,000	\$257,840					
		RRU			\$650,000							
		CST			\$14,840,792							
	<b>(.8 miles)</b> (FDOT FM# 431798-4)									Add 2 Lanes	ROW	Project Manager: Heather Johnstone Plans complete: 5/2017
		PE	\$8,273									

OCALA/MARION COUNTY TPO  
DRAFT FY 2023 PRIORITY PROJECTS

RANK	ROAD SEGMENT	ROADWAY DATA								Improvement	PRIORITY YEAR PHASE FY 2022	COMMENTS	
		Length	# of Lanes	LOS Standard	LOS Volume (Capacity)	2014 Traffic Count	Volume/ Capacity Ratio	LOS	SIS				
13	SR 40 - East												
	NE 60th Court to CR 314 (FDOT FM# 410674-2)	10.0	2	C	12,400	13,600	110%		E	Yes	Add 2 Lanes 2 bridge structures, from CR 326 to CR 314 concrete, wildlife crossings	FULLY FUNDED	Project Manager: Kathy Enot Includes Black Bear Scenic Trail Plans complete: 3/2017 LRE being updated
	<b>Funding Status</b>	<b>PHASE</b>	<b>FY 16/17</b>	<b>FY 17/18</b>	<b>FY 18/19</b>	<b>FY 19/20</b>	<b>FY 20/21</b>	<b>FY 21/22</b>					
		ENV	\$1,163,794										
		PE	\$11,106	\$700,000									
		ROW	\$330,300	\$2,759,500	\$2,085,100	\$1,030,000	\$344,270						
		CST		\$122,300,473									
	CR 314 to CR 314A (FDOT FM# 410674-3)	5.8	2	C	8,400	11,400	136%			Yes	Add 2 Lanes	ROW	Project Manager: Kathy Enot Includes Black Bear Scenic Trail Plans complete: 2/2017 <i>Next phase right of way</i>
	<b>Funding Status</b>	<b>PHASE</b>	<b>FY 16/17</b>	<b>FY 17/18</b>	<b>FY 18/19</b>	<b>FY 19/20</b>	<b>FY 20/21</b>	<b>FY 21/22</b>					
		ENV	\$474,186										
		PE	\$96,198										
	CR 314A to Levy Hammock Road (FDOT FM# 410674-4)	2.6	2	C	8,400	7,200	86%			Yes	Add 2 Lanes	PE	New Project Includes Black Bear Scenic Trail <i>Next phase design</i>
14	SR 40												
	CR 328 to US 41 (FDOT FM# 238720-1)	9.8	2	C	16,400	12,700	77%		C	No	Add 2 Lanes	ROW	Project Manager: Kathy Enot Plans complete: 3/2010 <i>Next phase right of way</i>
		Traffic count has been averaged											
15	US 27/I-75 Interchange Operational Improvements												
	NW 44 <sup>th</sup> Avenue to NW 35 <sup>th</sup> Avenue (FDOT FM# 433680-1)	-	4	D	39,800	21,600	54%		C	Yes	Operational/Capacity Improvements	PD&E	New Project
16	SW 95th Street Interchange (FDOT FM# 429582-1)	-	-	-	-	-	-	-	-	Yes	New Interchange	PD&E	New Project
17	NE 25 <sup>th</sup> Avenue												
	SR 492 to NE 35 <sup>th</sup> Street (FDOT FM# 431797-1)	1.6	2	D	14,040	9,100	65%		D	No	Add 2 Lanes	ROW	Project Manager: Naziru Isaac Plans complete: 10/2018
	<b>Funding Status</b>	<b>PHASE</b>	<b>FY 16/17</b>	<b>FY 17/18</b>	<b>FY 18/19</b>	<b>FY 19/20</b>	<b>FY 20/21</b>	<b>FY 21/22</b>					
		PD&E	\$2,797										
		PE	\$987,948										
	Project includes grade separation over CSX 'S' line												

OCALA/MARION COUNTY TPO  
DRAFT FY 2023 PRIORITY PROJECTS

RANK	ROAD SEGMENT	ROADWAY DATA								Improvement	PRIORITY YEAR PHASE FY 2022	COMMENTS
		Length	# of Lanes	LOS Standard	LOS Volume (Capacity)	2014 Traffic Count	Volume/Capacity Ratio	LOS	SIS			
18	US 27											
	NW 27th Ave. to NW 44th Ave. <i>Funding Status</i> (FDOT FM# 433633-1)	1.8	4	D	37,900	20,600	54%	C	Yes	Add 2 Lanes	PE	New Project
19	SR 40											
	SW 60th Ave. to SW 27th Ave.	3.0	4	D	39,800	28,500	72%	C	No	Add 2 Lanes	PD&E	New Project
20	CR 484											
	CR 475A to Marion Oaks Course	2.7	4	D	29,160	28,100	96%	D	No	Add 2 Lanes	PE	New Project
21	US 441											
	CR 42 to Sumter County Line (FDOT FM# 238395-8)	2.0	4	D	39,800	34,600	87%	C	No	Add 2 Lanes	ROW	Project Manager: Ashraf Elmaghraby
22	US 301 - South											
	SE 143rd Place to CR 42 (FDOT FM# 411256-4)	2.00	2	D	24,200	16,700	69%	C	No	Add 2 Lanes	ROW	Project Manager: Marcus Lisicki 10/30/09 Plans complete
23	SR 326											
	US 441 to CR 200A (FIHS Facility)	2.3	2	D	16,800	11,500	68%	C	Yes	Add 2 Lanes	PE	New Project
24	NE 8th Avenue											
	SR 40 to SR 492	0.85	4	E	28,900	8,600	30%	C	No	Remove 2 Lanes/ Multi-modal enhancements	PE	New Project
25	NW 37th Avenue											
	SR 40 to US 27	1.63	2	-	-	-	-	-	No	New 2 Lane Road	PE	New Project
26	Emerald Road Extension											
	SE 92nd Loop to Emerald Road	0.5	2	-	-	-	-	-	No	New 2 Lane Road	PE	New Project
27	Marion Oaks Extension and Flyover											
	SW 18th Ave Rd to CR 475/w I-75 Flyover	2.4	2	-	-	-	-	-	No	New 2 Lane Road/w New Overpass	PE	New Project





**April 7, 2017**

**TO: TAC/CAC Members**

**FROM: Kenneth Odom, Transportation Planner**

**RE: 2017 Transit Development Plan Update**

---

The 2017 Transit Development Plan (TDP) is steadily progressing toward its adoption in August 2017. To date, the vast majority of the stakeholder interview and public involvement process has been completed along with the public involvement component of the Transportation Disadvantaged Service Plan (TDSP) update that is being coordinated along with the TDP development. Additionally, baseline assessment of the current system and comparative analysis with peer systems have also been completed.

TPO staff will be giving a presentation to update the committee on these completed tasks as well as current tasks and others to be completed in the near future. If you have any questions regarding the TDP development or the TDSP update, please contact TPO staff in our office at (629-8297).



---

---

**MEMORANDUM**

---

---

APRIL 7, 2017

TO: TAC MEMBERS

FROM: MICHAEL DANIELS, DIRECTOR

SUBJECT: TRANSIT SHELTERS

---

At the September 27<sup>th</sup>, 2016 TPO Board meeting a decision was made to go with the Hip Roof design for the transit shelters. The City of Ocala Traffic Engineering Department has been working on engineered drawings for selected locations for installation of transit shelters.

There are eleven (11) locations selected for the initial installation phase. The 11 locations, shown below, do not require additional right-of-way.

The TPO Board directed staff to put out to bid these eleven locations for installation of transit shelters.

The Invitation to Bid was sent out on February 3<sup>rd</sup>, and closed on February 23<sup>rd</sup>. Three bids were received as below:

Bidder Name	Location	Bid Amount
Daly & Zilch (FL), Inc.	Lecanto, FL	\$173,664.00
AAA Affordable Structures, Inc.	Tavares, FL	\$177,804.00
Acolite & Claude United Signs Co., Inc.	Hialeah, FL	\$222,756.93

At the TPO Board meeting on February 28, 2017, the Board voted to award the contract to Daly & Zilch Inc. The installation will be substantially completed in 150 days after the contractor is issued a written "Notice to Proceed."

The City of Ocala approved a contract with Daly & Zilch at the April 4, 2017 City Council meeting. Construction is expected to be completed in 150 days.

*Cooperative and comprehensive planning for our transportation needs*  
Marion County • City of Belleview • City of Dunnellon • City of Ocala

If you have any questions, please contact our office at 629-8297.

*Cooperative and comprehensive planning for our transportation needs*  
*Marion County • City of Belleview • City of Dunnellon • City of Ocala*

---

121 S.E. Watula Avenue • Ocala, Florida 34471  
Telephone: (352) 629-8297 • Fax: (352) 629-8240 • [www.ocalamariontpo.org](http://www.ocalamariontpo.org)

# Transit Shelter Locations Included in Bid

ID	Stop Location Description	Average Monthly Ridership	Bid Breakdown by Location		
			Daly & Zilch, Inc.	AAA Affordable Structures, Inc.	Acolite & Claude United Signs Co., Inc.
Transit Shelter ID #3043	SW 33rd Ave south of SR 40	209	\$14,545.20	\$16,164.00	\$20,250.63
Transit Shelter ID #3044	SW 33rd Ave south of SR 40	206	\$16,557.60	\$16,164.00	\$20,250.63
Transit Shelter ID #6008	NW 1st Ave south of NW 23rd Pl	201	\$16,707.60	\$16,164.00	\$20,250.63
Transit Shelter ID #4005	NE 36th Terr north of NE 8th Pl	195	\$14,845.20	\$16,164.00	\$20,250.63
Transit Shelter ID #2041	NE 3rd St west of NE 22nd Ave	167	\$16,917.60	\$16,164.00	\$20,250.63
Transit Shelter ID #2043	NE 3rd St west of NE 25th Ave	135	\$16,677.60	\$16,164.00	\$20,250.63
Transit Shelter ID #3032	NW 4th St east of NW MLK Ave	133	\$16,137.60	\$16,164.00	\$20,250.63
Transit Shelter ID #5033	SW 32nd Ave south of SW 31st Rd	118	\$14,065.20	\$16,164.00	\$20,250.63
Transit Shelter ID #2042	NE 3rd St west of NE 22nd Ave	117	\$16,917.60	\$16,164.00	\$20,250.63
Transit Shelter ID #3022	NW MLK Ave south of NW 7th St	82	\$16,257.60	\$16,164.00	\$20,250.63
Transit Shelter ID #5032	SW 32nd Ave south of SW 31st Rd	18	\$14,035.20	\$16,164.00	\$20,250.63
<b>Total Number of Shelters Included in Bid: 11</b>		<b>Bid Total:</b>	\$173,664.00	\$177,804.00	\$222,756.93

## Shelter and Site Work Specifications

### Specific design directives that apply to the shelters are as follows:

- Shelter size shall be approximately five feet (5') deep by ten feet (10') wide. Shelters shall be able to be constructed within the footprints provided in the enclosed engineered drawings for each site.
- The minimum specifications for shelter wind load strength must be certified by a licensed Architect/Engineer to be in compliance with the Florida Building Code.
- All shelters (except for Transit ID 3043, 4005, 5032, 5033) must incorporate a self-contained solar powered commercial lighting system (or alternating current, where available).
- All shelters shall provide a permanently secured and appropriately sized bench.
- All shelters shall provide for maximum shelter from sun and rain based on normal Central Florida weather conditions.
- Shelters shall incorporate powdered coated steel structural components, a metal roof, and ventilated side panels for maximum air circulation.
- Shelters must meet all ADA requirements, pursuant to F.S. 337.408. Accessibility by persons with all disabilities to and from the shelter is required for all sheltered locations. This requirement extends to public access to each bus stop site, to include provision and installation of additional concrete as specified in each site design.
- Shelters shall meet the color requirements as specified in Exhibit A.
- Contractor is fully responsible for on-site verification of conditions to include verification that site specific conditions are acceptable for product installation in accordance with manufacturer's instructions.
- All metal surfaces of the shelter or related components shall be smooth and free of surface blemishes including pitting, rust and scale seam marks, roller marks, rolled trade names and roughness.

### Site Work Requirements:

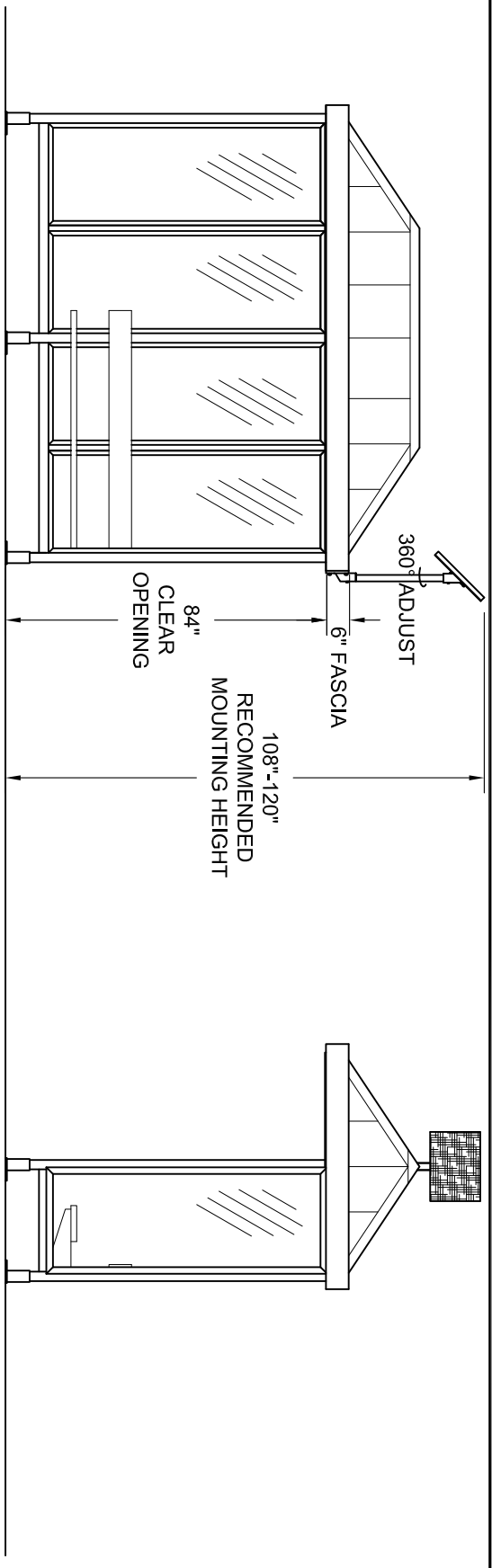
#### Transit Shelter ID #2041, 2042, 2043, 3022, 3032, 3044, and 6008

- Mobilization
- Project Sign
- Maintenance of Traffic
- Silt Fence & Sediment Control
- Clearing & Grubbing (Curb, Trees and Unsuitable Material)
- Concrete Excavation – Bus Shelter Pad and ADA Landing Pad
- Grading – Bus Shelter Pad and ADA Landing Pad
- Concrete Sidewalk – Bus Shelter Pad and ADA Landing Pad
- Sod – Bahia
- Single Post Sign (Installation included)
- Shelter 5'x10' (Installation included)
- Aluminum Bench - Six feet (6') long (Installation included)

- Solar Lighting Kit (Installation included)
- All necessary permits

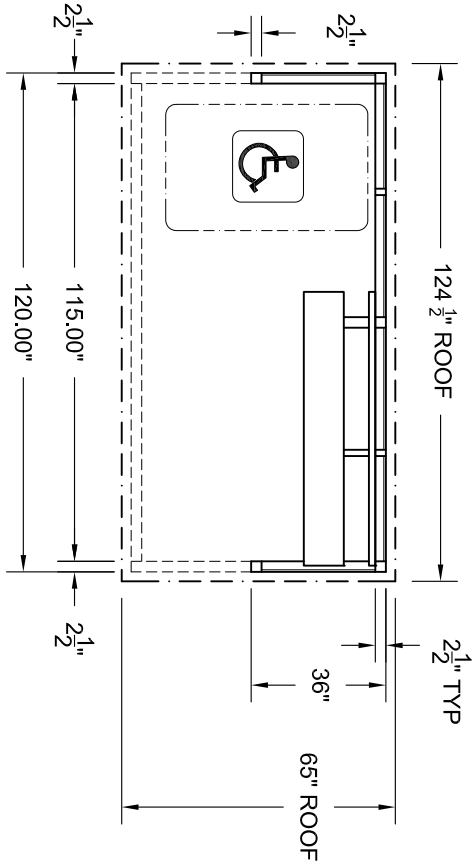
Transit Shelter ID #3043, 4005, 5032, and 5033

- Mobilization
- Project Sign
- Maintenance of Traffic
- Silt Fence & Sediment Control
- Clearing & Grubbing (Curb, Trees and Unsuitable Material)
- Concrete Excavation – Bus Shelter Pad and ADA Landing Pad
- Grading – Bus Shelter Pad and ADA Landing Pad
- Concrete Sidewalk – Bus Shelter Pad and ADA Landing Pad
- Sod – Bahia
- Single Post Sign (Installation included)
- Shelter 5'x10' (Installation included)
- Aluminum Bench - Six feet (6') long (Installation included)
- All necessary permits



FRONT ELEVATION

SIDE ELEVATION



PLAN VIEW - CANTILEVERED UNIT

- NOTES (INITIAL APPROVAL WHERE INDICATED):
- FINISH IS POWDER COAT PAINT FINISH - COLOR = T.B.D
  - ROOF IS HIP DESIGN WITH STANDING SEAM METAL - COLOR T.B.D.
  - WALL GLAZING IS 3/8" CLEAR TEMPERED GLASS
  - PARTIAL ALUMINUM BENCH AND BACKREST
  - LED SOLAR LIGHT PACKAGE - DESIGNED LOCATION SPECIFIC
  - DESIGN IS INTENDED TO COMPLY WITH SPECIFICATIONS IN ALL ASPECTS, ANY DEVIATION FROM SPECIFICATIONS IS UNINTENTIONAL AND MAY BE DISREGARDED.

**DUO-GARD**  
**FORGE AHEAD!**  
 Duo-Gard Industries, Inc.  
 Tel (734) 207-9700 Fax (734) 207-7995  
 www.duo-gard.com

THIS DRAWING IS PROPRIETARY AND FOR THE SOLE USE OF OUR CUSTOMER AND MAY NOT BE COPIED OR REPRODUCED WITHOUT PRIOR WRITTEN CONSENT FROM DUO-GARD INDUSTRIES, INC. LEAD TIME BEGINS UPON RECEIPT OF SIGNED SHOP DRAWINGS

APPROVAL SIGNATURE \_\_\_\_\_ DATE \_\_\_\_\_

PROJECT NAME		CITY OF OCALA, FL.	
DESCRIPTION		5' X 10' CANTILEVERED TRANSIT STYLE SHELTER	
PRJT ENG	PRJT MGR	DWG DATE	02/28/17
REV1	REV2	SCALE	1/4" = 1'-0"
1	1	PAGE	1
1	1	OF	1
DRAWING #		12093-1	



GWINNETT COUNTY  
TRANSIT  
gocrt.com

03/12/2006



April 11, 2017

**CONSTRUCTION**

<u>Financial Project No.</u>	<u>Description</u>	<u>Work Mix Description</u>	<u>Contractor Name</u>	<u>Original Amount</u>	<u>Original Contract</u>	<u>Work Begin</u>	<u>Status</u>	<u>Lane Closures</u>
238693-1	SR 35 (Baseline Road) from SE 92nd Loop to SR 464	ADD LANES & RECONSTRUCT	D.A.B. CONSTRUCTORS, INC.	\$17,605,644.00	850	8/28/2015	Time started on 8/28/2015 with design. Working with utilities on relocation and drainage issues. Working in basin 1, 2, 3 4, and 5with drainage placement. Working in Pond 1 and 2 for embankment, subgrade and base. Working on drainage basin issues with design.	None planned
427280-1	US 441 (SR 25) from NW 35th to CR 25A	RESURFACING	ANDERSON COLUMBIA CO., INC.	\$8,636,536.00	340	11/29/2015	Milling and resurfacing is mostly complete will start on friction course soon. NW 100th St. intersection turn lanes are paved, median cross over work is remaining. Rebuilding intersection at CR 25A and US 441	None planned
430643-1	I-75 from North of US 27 Interchange to the Alachua County Line	RESURFACING	ANDERSON COLUMBIA CO., INC.	\$26,022,554.27	520	6/27/2015	Milling and resurfacing going south and north bound on the inside and middle lanes. This is completed with a dual lane closure. Working on ramps at SR 326.	Sunday, April 9th to Saturday, April 15th, 2017 7:30pm to 6 am Northbound inside and outside lane closure (depending on work to be performed) I-75 between SR 326 and Alachua County. Contractor to remove, replace and construct guardrail.
437818	Landscape at CR318	Landscaping	Frankie Valdez Co Inc.	\$407,700.00	820	10/31/2016	The work on landscaping is almost completed. Will start Establishment soon.	None planned
432421-1	SR 40 from NE 25th Ave to West of NE 10th Street	INTERSECTION IMPROVEMENTS	Masci General Contractor	\$1,085,603.74	150	11/7/2016	Working on Widening areas with asphalt placement.	Eastbound and westbound intermittent inside lane closures during the day from NE 25th Avenue to NE 10th Street for curb and gutter, sidewalk, median modifications, and turn lanes.
435466-1	Landscaping at I 75 at SR 200 and US 27	Landscaping	Gainesville Landscape Contractors	\$594,750.00	870	08/21/15	Contract in plant establishment time frame now.	N/A

**TRAFFIC OPERATIONS**

<u>Financial Project No.</u>	<u>Description</u>	<u>Status</u>
435686-1	US 441 @ SE 98th Lane	Construct left turn lanes NB & SB Directions on US 441. Design programmed in FY 2018, construction programmed in FY 2020.

436129-1	SR 200 at SW 60th Avenue Traffic Ops	Construct westbound left turn lanes design plans under review. Started on 4/18/2016, time is 60 day contract for P&S Paving (turn lane).-Complete 9/14/16. A milling and resurfacing project that ends at the intersection will pick up the eastbound dual lefts (and modifications to the southbound median), design scheduled FY 2016 and construction scheduled for FY 2019 (436879-1).
	SR 464 at SE 53rd Ave/Rotary Sportplex	Median opening construction and turn lane extension. Currently in Design as of 2/22/217.
	US 27 @ CR 326	Supplemental warning beacons on signal ahead signs. To be sent to Design
	US 41 Dunnellon pedestrian crossing RRFB's- Withlacoochee River to River Drive	Sent to construction on 1/27/2017
238002-3	SR 40 and SW 140th Avenue - change flashing beacon to full signal	Work Order #2 has been issued. This will convert the existing flashing beacon to a fully operational traffic signal at the intersection of SR 40 and SW 140th Ave. Contract time for this is 90 days.

Contact Information:

Jamie Kersey, TPO Liaison  
386-943-5338

[jamie.kersey@dot.state.fl.us](mailto:jamie.kersey@dot.state.fl.us)

Mike McCammon, Ocala Operations Engineer  
(352) 620-3001

[Michael.McCammon@dot.state.fl.us](mailto:Michael.McCammon@dot.state.fl.us)

***For additional information please go to [www.cflroads.com](http://www.cflroads.com)***