



CITIZENS ADVISORY COMMITTEE

Ocala Citizens Service Center
201 SE 3rd Street, Ocala FL 34471
2nd Floor Training Room

**February 12, 2019
3:00 PM**

AGENDA

1. CALL TO ORDER AND ROLL CALL

2. PROOF OF PUBLICATION

3. ACTION ITEMS

A. SAFETY PERFORMANCE MEASURES AND TARGETS

Staff will present and is requesting approval of the following five proposed safety targets and performance measures as required by the Federal Highway Administration (FHWA) for all public roads:

- 1. Number of fatalities;*
- 2. Rate of fatalities per 100 Million Vehicle Miles Traveled (VMT);*
- 3. Number of serious injuries;*
- 4. Rate of serious injuries per 100 Million VMT; and*
- 5. Number of non-motorized fatalities and non-motorized serious injuries.*

B. SunTran Route Updates

Staff is proposing route and schedule changes to the existing SunTran bus system.

4. PRESENTATION ITEMS

A. NW 49th Street Interchange Alternatives

Staff will present an update on the NW 49th Street interchange project.

5. COMMENTS BY FDOT

A. Florida 5-Year Work Program Public Hearing

B. Construction Report

6. COMMENTS BY TPO STAFF

7. COMMENTS BY CAC MEMBERS

8. PUBLIC COMMENT (Limited to 5 minutes)

9. ADJOURNMENT

If reasonable accommodations are needed for you to participate in this meeting, please call the TPO Office at (352) 629-8297 forty-eight (48) hours in advance, so arrangements can be made.

*The next regular meeting of the Citizens Advisory Committee will be held on **March 12, 2019.***



February 8, 2019

TO: TAC/CAC Members

FROM: Michael Daniels, Director

SUBJECT: Safety Targets and Performance Measures

Nationally, state-specific, and locally, transportation plans exist to enhance safety for all users of the transportation system. A coordinated effort to connect all the safety plans has long been in effect in the transportation realm, but over the last three years, a system of Performance Management has led to a greater push for comprehensive and coordinated transportation and safety planning. Performance Measures for Safety have been developed by the FHWA, for which targets are being established cooperatively between the FDOT and MPO's within the State of Florida (as well as nationally). Through this coordinated effort, the goals of the Highway Safety Improvement Program (HSIP), Highway Safety Plan (HSP), Strategic Highway Safety Plan (SHSP), and region-specific safety and transportation plans can be shown to guide and support one another. In August of 2018, the FDOT adopted a target of "Zero" for the five (5) safety performance measures adopted by the Federal Highway Administration (FHWA) for all public roads.

The Performance Measures, along with a brief description of each is provided in the following table:

*Cooperative and comprehensive planning for our
transportation needs*

*Marion County • City of Belleview • City of Dunnellon •
City of Ocala*

121 S.E. Watula Avenue • Ocala, Florida 34471

Telephone: (352) 629-8297 Fax: (352) 629-8240 • www.ocalamariontpo.org

Performance Measure	Description
Number of fatalities	The total number of persons suffering fatal injuries in a motor vehicle crash during a calendar year.
Rate of fatalities per 100 Million Vehicle Miles Traveled (VMT)	The ratio of total number of fatalities to the number of vehicle miles traveled (VMT, in 100 Million VMT) in a calendar year.
Number of serious injuries	The total number of persons suffering at least one serious injury in a motor vehicle crash during a calendar year.
Rate of serious injuries per 100 Million VMT	The ratio of total number of serious injuries to the number of VMT (in 100 Million VMT) in a calendar year.
Number of non-motorized fatalities and non-motorized serious injuries	The combined total number of non-motorized fatalities and non-motorized serious injuries involving a motor vehicle during a calendar year.

FDOT Adopted Measures	Target	2013 – 2017 Annual Average	Average Annual % increase/decrease From 2012 - 2016
Number of fatalities	0	2,821	5.2%
Rate of fatalities per 100 Million Vehicle Miles Traveled (VMT)	0	1.36	.38%
Number of serious injuries	0	20,910	2.41%
Rate of serious injuries per 100 Million VMT	0	10.12	2.18%
Number of non-motorized fatalities and non-motorized serious injuries	0	3,249	-.07%

Upon adoption by the Florida Department of Transportation (FDOT) of a target of “Zero” and the Interim Performance Measures, the TPO, along with all the other Metropolitan Planning Organizations in the State of Florida, were given 180 days to adopt their targets for the safety measures. The TPO must adopt its Performance Measures and Targets by February 27, 2019.

MPO’s were granted the option of either adopting/supporting the State target, or establishing a specific number or rate for each performance measure. MPOs that choose to establish a rate for a target are required to report not only the estimate used for VMT to establish the target rate, but also the methodology used to arrive at the overall VMT estimate.

Cooperative and comprehensive planning for our transportation needs

Marion County • City of Belleview • City of Dunnellon •
City of Ocala

121 S.E. Watula Avenue • Ocala, Florida 34471

Telephone: (352) 629-8297 Fax: (352) 629-8240 • www.ocalamariontpo.org

Last year, the TPO voted to adopt targets based on the previous 5- year historical averages which have been provided below:

2018 Safety Performance Measures	Performance Measure Target
Number of fatalities	73*
Rate of fatalities per 100 Million VMT	1.54
Number of serious injuries	354*
Rate of serious injuries per 100 Million VMT	7.44
Number of non-motorized fatalities and non-motorized serious injuries	47*

*the fatality, serious injury and non-motorized fatalities and serious injury target numbers were determined by using historical trend to predict the 2019 Vehicle Miles Travelled (VMT data) and multiplying that number by the annual average rate over the previous 5 years.

The 2018 traffic fatalities, serious injuries and non-motorized fatalities and serious injuries are provided in the following table:

Safety Performance Measures	2018 Performance Measure Results
Number of fatalities	83
Number of serious injuries	584
Number of non-motorized fatalities and non-motorized serious injuries	56

The rolling five-year average comparison between 2012 -2016 and 2013 – 2017 is provide in the table below:

Ocala/Marion County TPO Adopted Measures	Target	2013 – 2017 Annual Average Fatalities	Average Annual % increase/decrease From 2012 - 2016
Number of fatalities	73	66.4	7.79%
Rate of fatalities per 100 Million Vehicle	1.54	1.54	4.47%
Number of serious injuries	354	328	-1.95%
Rate of serious injuries per	7.44	7.511	-4.85%
Number of non-motorized fatalities and non-	47	43	3.4%

Cooperative and comprehensive planning for our transportation needs

Marion County • City of Belleview • City of Dunnellon •
City of Ocala

121 S.E. Watula Avenue • Ocala, Florida 34471

Telephone: (352) 629-8297 Fax: (352) 629-8240 • www.ocalamariontpo.org

RECOMMENDED MEASURES

- Develop long-term strategies to address traffic safety as part of the 2045 Long Range Transportation Plan, and
- Utilizing data that the TPO has collected as part of the annual traffic counts and trends manual and fatality and serious rate and using the methodology that was adopted for the 2018 traffic safety performance measure standards, staff has established the following 2018 performance measure targets:

Safety Performance Measures	Performance Measure Target
Number of fatalities	80*
Rate of fatalities per 100 Million VMT	1.66
Number of serious injuries	405*
Rate of serious injuries per 100 Million VMT	8.40
Number of non-motorized fatalities and non-motorized serious injuries	50*

*the fatality, serious injury and non-motorized fatalities and serious injury target numbers were determined by using historical trend to predict the 2019 Vehicle Miles Travelled (VMT data) and multiplying that number by the annual average rate over the previous 5 years.

If you have any questions regarding the ranking please contact me in our office at (352) 629-8297.

*Cooperative and comprehensive planning for our
transportation needs*

*Marion County • City of Belleview • City of Dunnellon •
City of Ocala*

121 S.E. Watula Avenue • Ocala, Florida 34471
Telephone: (352) 629-8297 Fax: (352) 629-8240 • www.ocalamariontpo.org

MPO/TPO		Average Annual Fatalities ¹									Average Annual Serious Injuries ²									Average Annual Fatality Rates ³									Average Annual Serious Injury Rates ⁴									Average Annual Pedestrian and Bicyclist Fatalities and Serious Injuries ⁵													
		2009-13		2010-14		2011-15		2012-16		2013-17		2009-13		2010-14		2011-15		2012-16		2013-17		2009-13		2010-14		2011-15		2012-16		2013-17		2009-13		2010-14		2011-15		2012-16		2013-17		2009-13		2010-14		2011-15		2012-16		2013-17	
		Average	%Δ	Average	%Δ	Average	%Δ	Average	%Δ	Average	%Δ	Average	%Δ	Average	%Δ	Average	%Δ	Average	%Δ	Average	%Δ	Average	%Δ	Average	%Δ	Average	%Δ	Average	%Δ	Average	%Δ	Average	%Δ	Average	%Δ	Average	%Δ	Average	%Δ	Average	%Δ	Average	%Δ	Average	%Δ	Average	%Δ				
Space Coast TPO	Single County	63.8	66.2	3.8%	69.6	5.1%	74.8	7.5%	81.2	8.6%	587.0	607.4	3.5%	601.4	-1.0%	630.8	4.9%	616.2	-2.3%	1.052	1.100	4.6%	1.159	5.4%	1.218	5.1%	1.291	6.0%	9.666	10.097	4.5%	10.033	-0.6%	10.363	3.3%	9.897	-4.5%	79.8	82.2	3.0%	86.6	5.4%	90.2	4.2%	91.0	0.9%					
Charlotte County-Punta Gorda MPO	Single County	22.8	21.0	-7.9%	21.4	1.9%	22.4	4.7%	24.2	8.0%	164.2	149.2	-9.1%	134.6	-9.8%	126.8	-5.8%	113.0	-10.9%	1.048	0.964	-8.0%	0.969	0.5%	0.990	2.2%	1.041	5.2%	7.555	6.864	-9.1%	6.128	-10.7%	5.668	-7.5%	4.898	#####	24.2	23.0	-5.0%	21.4	-7.0%	20.4	-4.7%	20.6	1.0%					
Broward MPO	Single County	178.4	175.0	-1.9%	183.0	4.6%	198.6	8.5%	206.6	4.0%	2,080.6	2,003.8	-3.7%	1,888.6	-5.7%	1,776.6	-5.9%	1,633.8	-8.0%	1.099	1.074	-2.3%	1.109	3.3%	1.199	8.1%	1.228	2.4%	12.801	12.277	-4.1%	11.446	-6.8%	10.801	-5.6%	9.782	-9.4%	351.4	350.4	-0.3%	341.2	-2.6%	351.8	3.1%	333.0	-5.3%					
Okaloosa-Walton TPO	Multiple Counties, not countywide	See individual counties below									See individual counties below									See individual counties below									See individual counties below									See individual counties below													
Gainesville MTPO	Single County, not countywide	See individual county below									See individual county below									See individual county below									See individual county below									See individual county below													
Hernando/Citrus MPO	Multiple Counties	50.6	47.0	-7.1%	49.2	4.7%	49.6	0.8%	54.0	8.9%	448.4	428.8	-4.4%	445.0	3.8%	461.2	3.6%	482.4	4.6%	1.527	1.416	-7.3%	1.471	3.9%	1.458	-0.9%	1.541	5.7%	13.548	12.925	-4.6%	13.329	3.1%	13.560	1.7%	13.794	1.7%	34.4	36.2	5.2%	41.0	13.3%	43.0	4.9%	42.8	-0.5%					
Hillsborough County MPO	Single County	157.6	161.0	2.2%	168.4	4.6%	183.6	9.0%	187.2	2.0%	2,066.2	1,921.6	-7.0%	1,752.0	-8.8%	1,618.0	-7.6%	1,535.6	-5.1%	1.245	1.266	1.7%	1.309	3.4%	1.398	6.8%	1.391	-0.5%	16.296	15.106	-7.3%	13.650	-9.6%	12.430	-8.9%	11.509	-7.4%	254.8	249.6	-2.0%	246.0	-1.4%	242.6	-1.4%	236.4	-2.6%					
Indian River County MPO	Single County, not countywide	See individual county below									See individual county below									See individual county below									See individual county below									See individual county below													
North Florida MPO	Multiple Counties	168.4	172.8	2.6%	183.4	6.1%	201.0	9.6%	212.0	5.5%	1,261.0	1,299.2	3.0%	1,341.2	3.2%	1,371.2	2.2%	1,328.8	-3.1%	1.112	1.136	2.2%	1.188	4.6%	1.269	6.8%	1.301	2.5%	8.329	8.547	2.6%	8.716	2.0%	8.728	0.1%	8.226	-5.8%	174.2	181.8	4.4%	191.8	5.5%	196.0	2.2%	190.8	-2.7%					
Polk TPO	Single County	90.4	94.2	4.2%	99.8	5.9%	108.4	8.6%	113.6	4.8%	566.4	539.0	-4.8%	499.6	-7.3%	480.6	-3.8%	484.2	0.7%	1.520	1.541	1.4%	1.579	2.5%	1.645	4.2%	1.648	0.2%	9.503	8.840	-7.0%	7.959	-10.0%	7.389	-7.2%	7.085	-4.1%	63.0	65.2	3.5%	63.6	-2.5%	67.4	6.0%	70.4	4.5%					
Lee County MPO	Single County	75.2	75.6	0.5%	81.0	7.1%	87.2	7.7%	97.2	11.5%	456.6	458.0	0.3%	460.4	0.5%	498.6	8.3%	515.8	3.4%	1.164	1.140	-2.1%	1.187	4.1%	1.232	3.8%	1.331	8.0%	7.067	6.921	-2.1%	6.786	-2.0%	7.095	4.6%	7.076	-0.3%	76.8	80.0	4.2%	84.0	5.0%	91.0	8.3%	95.2	4.6%					
Martin MPO	Single County	26.2	23.6	-9.9%	24.2	2.5%	25.4	5.0%	25.2	-0.8%	124.6	116.4	-6.6%	107.0	-8.1%	102.6	-4.1%	102.6	0.0%	1.273	1.162	-8.7%	1.186	2.1%	1.246	5.1%	1.210	-2.9%	6.054	5.739	-5.2%	5.269	-8.2%	5.099	-3.2%	4.995	-2.0%	17.6	17.4	-1.1%	16.2	-6.9%	14.0	-13.6%	14.6	4.3%					
Miami-Dade Urbanized Area MPO	Single County	242.8	246.6	1.6%	265.0	7.5%	273.8	3.3%	284.8	4.0%	1,959.0	1,992.0	1.7%	1,992.4	0.0%	1,895.0	-4.9%	1,807.0	-4.6%	1.263	1.284	1.7%	1.378	7.3%	1.417	2.8%	1.452	2.5%	10.206	10.383	1.7%	10.387	0.0%	9.857	-5.1%	9.250	-6.2%	411.8	425.8	3.4%	446.0	4.7%	435.8	-2.3%	426.0	-2.2%					
Collier County MPO	Single County	37.2	37.2	0.0%	38.8	4.3%	38.0	-2.1%	36.0	-5.3%	184.0	174.0	-5.4%	175.2	0.7%	177.2	1.1%	186.0	5.0%	1.169	1.160	-0.8%	1.184	2.1%	1.125	-5.0%	1.032	-8.3%	5.790	5.445	-6.0%	5.388	-1.0%	5.252	-2.5%	5.258	0.1%	37.2	38.6	3.8%	37.6	-2.6%	40.0	6.4%	39.2	-2.0%					
Ocala/Marion County TPO	Single County	61.8	60.6	-1.9%	60.0	-1.0%	61.6	2.7%	66.4	7.8%	423.0	359.4	-15.0%	326.8	-9.1%	327.8	0.3%	321.4	-2.0%	1.538	1.507	-2.0%	1.475	-2.1%	1.478	0.2%	1.544	4.5%	10.501	8.952	-14.8%	8.069	-9.9%	7.894	-2.2%	7.511	-4.9%	41.8	39.0	-6.7%	38.0	-2.6%	41.2	8.4%	42.6	3.4%					
METROPLAN Orlando	Multiple Counties	208.8	210.6	0.9%	218.4	3.7%	225.8	3.4%	244.4	8.2%	1,539.6	1,893.0	23.0%	2,318.6	22.5%	2,639.2	13.8%	2,827.8	7.1%	1.049	1.049	0.0%	1.073	2.3%	1.088	1.4%	1.132	4.0%	7.748	9.401	21.3%	11.309	20.3%	12.624	11.6%	13.176	4.4%	261.2	300.0	14.9%	341.8	13.9%	375.6	9.9%	393.4	4.7%					
Bay County TPO	Single County	24.0	24.4	1.7%	27.2	11.5%	30.0	10.3%	29.2	-2.7%	257.4	250.4	-2.7%	255.2	1.9%	234.6	-8.1%	229.4	-2.2%	1.322	1.340	1.4%	1.476	10.1%	1.596	8.1%	1.520	-4.8%	14.172	13.761	-2.9%	13.897	1.0%	12.559	-9.6%	12.019	-4.3%	29.8	29.4	-1.3%	34.4	17.0%	37.6	9.3%	36.6	-2.7%					
Pasco County MPO	Single County	69.4	67.8	-2.3%	66.8	-1.5%	71.2	6.6%	77.6	9.0%	855.4	871.0	1.8%	933.0	7.1%	1,032.6	10.7%	1,145.2	10.9%	1.735	1.660	-4.3%	1.592	-4.1%	1.657	4.1%	1.729	4.3%	21.416	21.279	-0.6%	22.076	3.7%	23.905	8.3%	25.768	7.8%	105.6	109.6	3.8%	109.0	-0.5%	115.6	6.1%	121.4	5.0%					
Florida-Alabama TPO	Multiple Counties, not countywide	See individual counties below									See individual counties below									See individual counties below									See individual counties below									See individual counties below													
Pinellas County MPO	Single County	99.0	101.4	2.4%	102.8	1.4%	105.6	2.7%	109.4	3.6%	1,270.0	1,217.8	-4.1%	1,194.6	-1.9%	1,175.0	-1.6%	1,120.2	-4.7%	1.229	1.272	3.5%	1.296	1.9%	1.308	0.9%	1.330	1.7%	15.746	15.258	-3.1%	15.068	-1.2%	14.591	-3.2%	13.667	-6.3%	212.4	213.8	0.7%	217.2	1.6%	220.8	1.7%	215.0	-2.6%					
Sarasota/Manatee MPO	Multiple Counties	81.0	81.6	0.7%	87.4	7.1%	99.8	14.2%	101.4	1.6%	770.4	777.4	0.9%	906.6	16.6%	1,130.6	24.7%	1,279.2	13.1%	1.103	1.104	0.1%	1.160	5.1%	1.289	11.1%	1.279	-0.8%	10.487	10.492	0.0%	11.980	14.2%	14.496	21.0%	16.062	10.8%	127.8	134.2	5.0%	142.8	6.4%	160.0	12.0%	167.0	4.4%					
St Lucie TPO	Single County	30.0	29.8	-0.7%	31.0	4.0%	33.6	8.4%	36.4	8.3%	187.4	174.0	-7.2%	166.6	-4.3%	164.8	-1.1%	164.0	-0.5%	0.967	0.956	-1.1%	0.985	3.0%	1.064	8.0%	1.128	6.0%	6.027	5.562	-7.7%	5.276	-5.1%	5.230	-0.9%	5.095	-2.6%	26.6	28.4	6.8%	26.8	-5.6%	24.0	-10.4%	26.4	10.0%					
Capital Region TPA	Multiple Counties	55.4	53.0	-4.3%	51.4	-3.0%	55.2	7.4%	53.6	-2.9%	351.8	313.6	-10.9%	278.6	-11.2%	266.2	-4.5%	258.4	-2.9%	1.299	1.249	-3.8%	1.208	-3.3%	1.271	5.2%	1.203	-5.4%	8.203	7.360	-10.3%	6.539	-11.2%	6.147	-6.0%	5.842	-5.0%	41.8	41.4	-1.0%	42.4	2.4%	44.0	3.8%	43.8	-0.5%					
River to Sea TPO	Multiple Counties, not countywide	See individual counties below									See individual counties below									See individual counties below									See individual counties below									See individual counties below													
Palm Beach MPO	Single County	131.4	127.0	-3.3%	139.6	9.9%	152.8	9.5%	158.4	3.7%	1,047.0	1,040.2	-0.6%	1,027.2	-1.2%	1,055.2	2.7%	1,079.2	2.3%	1.067	1.022	-4.2%	1.099	7.5%	1.181	7.5%	1.192	0.9%	8.493	8.369	-1.5%	8.112	-3.1%	8.203	1.1%	8.152	-0.6%	190.0	193.4	1.8%	200.8	3.8%	203.0	1.1%	203.6	0.3%					
Lake-Sumter MPO	Multiple Counties	62.0	61.2	-1.3%	64.4	5.2%	66.4	3.1%	69.8	5.1%	369.4	348.8	-5.6%	340.6	-2.4%	364.6	7.0%	430.6	18.1%	1.436	1.385	-3.6%	1.410	1.8%	1.423	0.9%	1.429	0.4%	8.571	7.879	-8.1%	7.429	-5.7%	7.742	4.2%	8.658	11.8%	37.2	39.6	6.5%	38.8	-2.0%	40.8	5.2%	43.0	5.4%					
Heartland Regional TPO	Multiple Counties	57.6	55.8	-3.1%	57.4	2.9%	60.6	5.6%	66.8	10.2%	331.2	310.4	-6.3%	299.8	-3.4%	341.8	14.0%	390.0	14.1%	2.053	1.996	-2.8%	2.025	1.5%	2.099	3.7%	2.235	6.5%	11.785	11.089	-5.9%	10.577	-4.6%	11.744	11.0%	12.899	9.8%	32.4	35.0	8.0%	33.2	-5.1%	32.4	-2.4%	33.4	3.1%					



February 8, 2019

TO: TAC/CAC Members

FROM: Michael Daniels, TPO Director

RE: SunTran Route Realignment

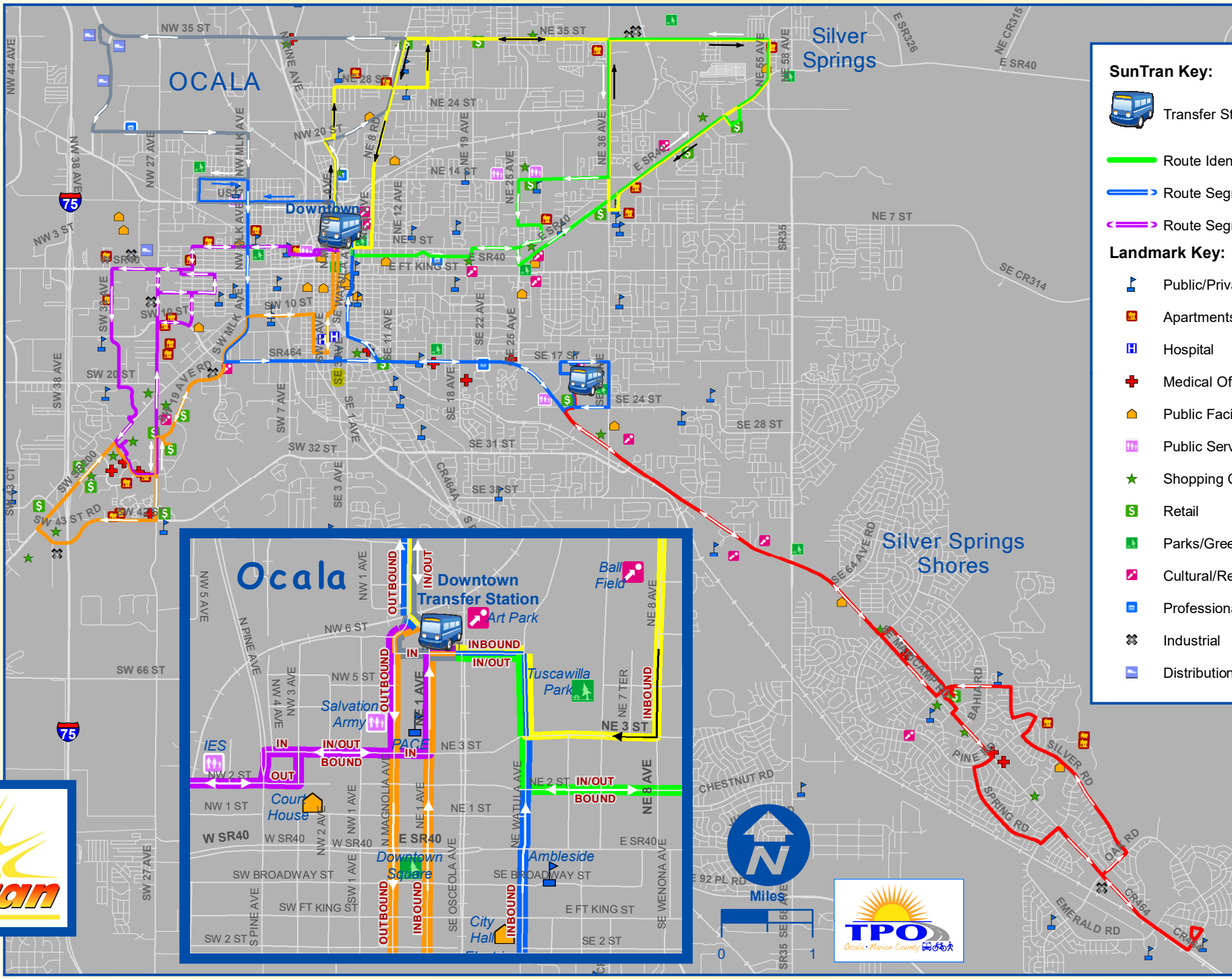
Minor route realignment changes are proposed to address concerns raised by the riders since the route realignment changes went in effect on November 12th.

These changes:

- Revise the schedule to go back to 70-minute headways
- Revise the purple route to allow additional two-way access
- Revise the silver route to include the area around Howard Middle School
- Revise the blue route to include access on SE 17th Street and SE 36th Avenue
- Revise the red route to include access into the Silver Springs Shores WalMart on both inbound and outbound trips.

A final set of recommendations have now been compiled and additional public outreach is underway to inform transit riders of the planned changes. SunTran drivers will begin training on the proposed routes in the coming weeks. A public hearing will be conducted before the TPO Board this month and new service is scheduled to begin at a yet unselected date in September.

Should you have any questions regarding any of the planned route changes please contact me in our office at (629-8297).



SunTran Key:
 Transfer Station
 Route Identified by Color
 Route Segment One-Way Only
 Route Segment Two-Way

Landmark Key:
 Public/Private Schools and Colleges
 Apartments/Housing
 Hospital
 Medical Office
 Public Facilities/Office
 Public Service
 Shopping Center
 Retail
 Parks/Greenways
 Cultural/Recreational
 Professional Offices
 Industrial
 Distribution Center



FILENAME: M:\DEPARTMENT\TPO\TRANSIT\CURRENT
2018_0906_REALIGNMENT\SR1 0805 WORKING\FULL
BUS MAP_8x14.INXD: 17:50P1
PLOT DATE: amc 02.06.2019



TPO UPDATE

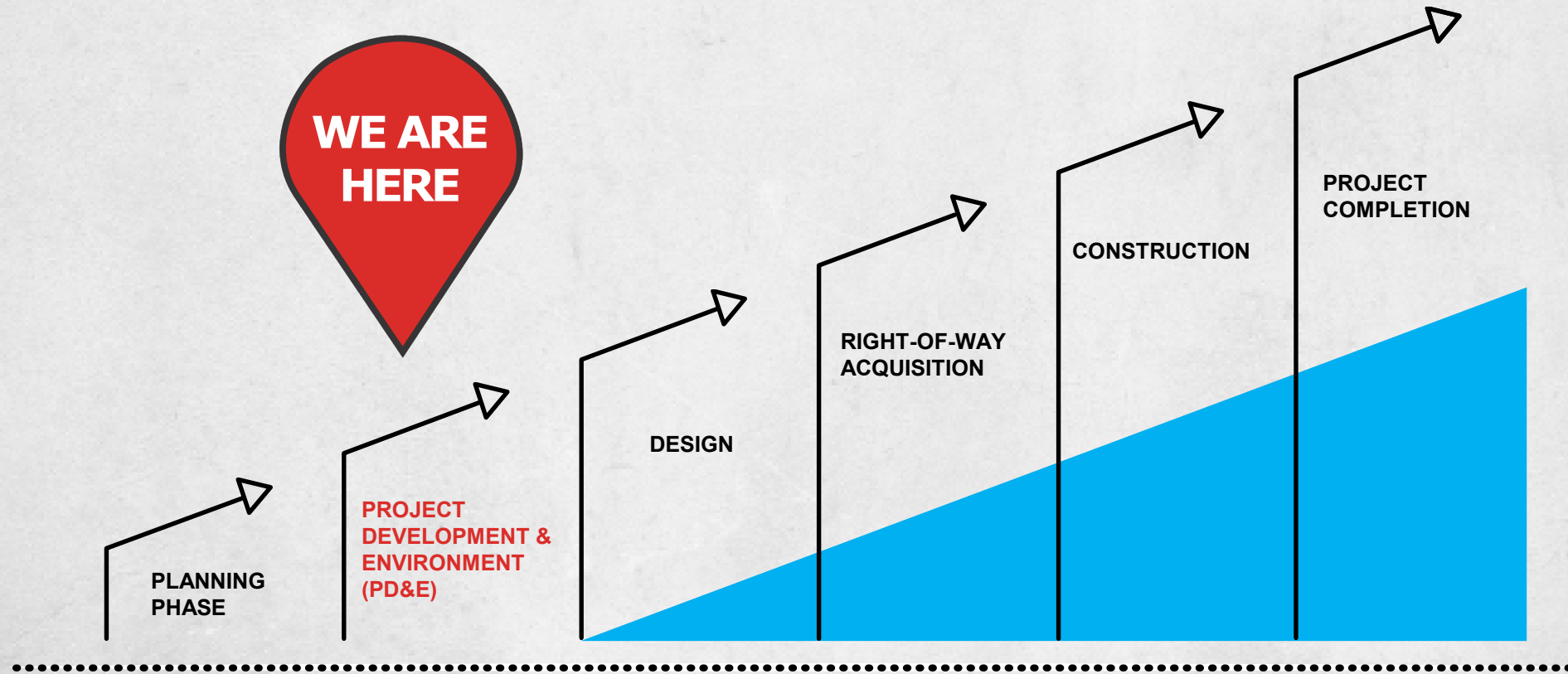
I-75 INTERCHANGE AT NW 49TH STREET PD&E STUDY

JANUARY 24, 2019

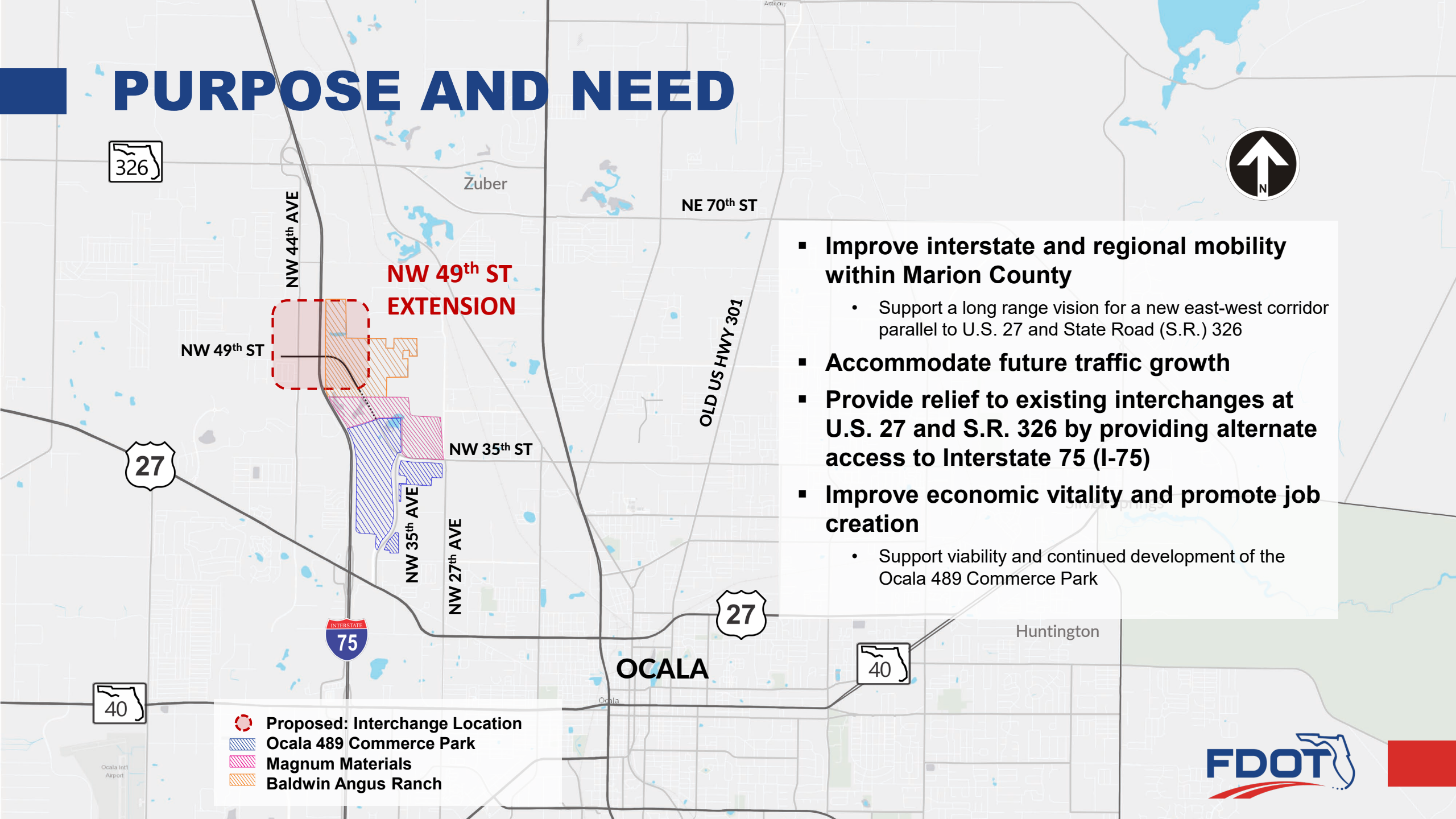


FPID: 435209-1 ETDM: 14242

WHAT IS A PD&E STUDY?



PURPOSE AND NEED



- **Improve interstate and regional mobility within Marion County**

- Support a long range vision for a new east-west corridor parallel to U.S. 27 and State Road (S.R.) 326

- **Accommodate future traffic growth**

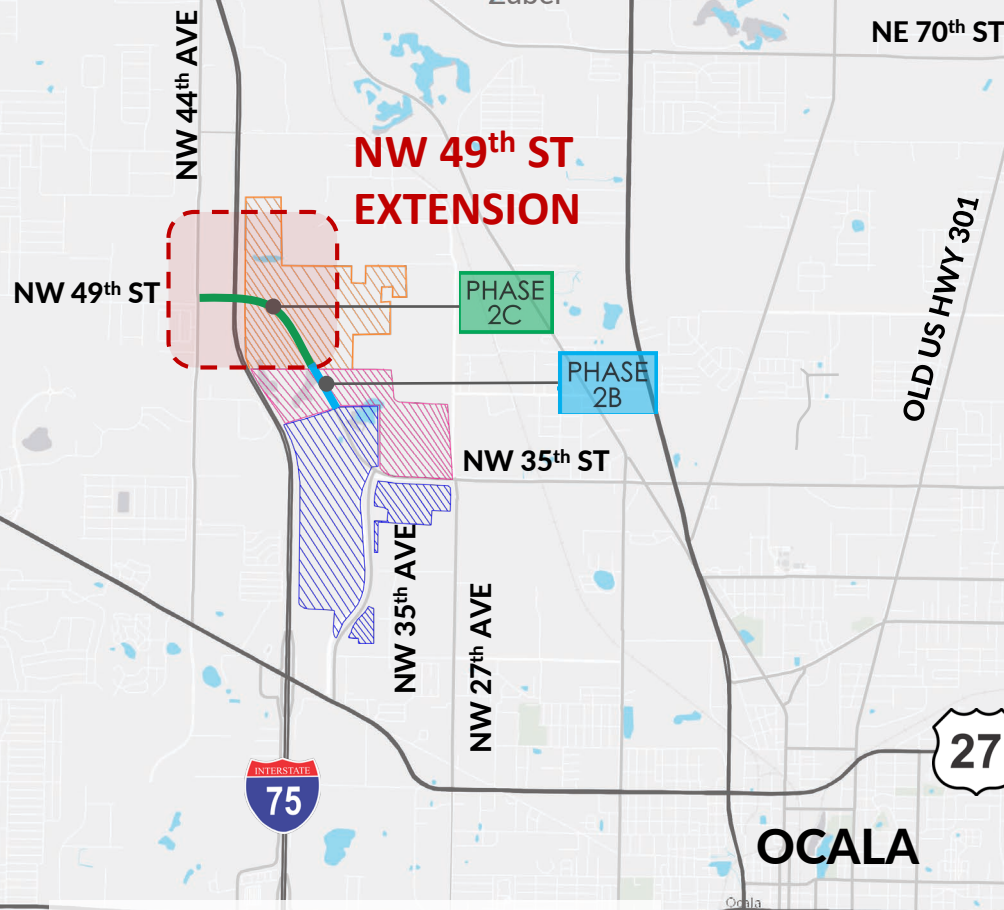
- **Provide relief to existing interchanges at U.S. 27 and S.R. 326 by providing alternate access to Interstate 75 (I-75)**

- **Improve economic vitality and promote job creation**

- Support viability and continued development of the Ocala 489 Commerce Park

- Proposed: Interchange Location
- Ocala 489 Commerce Park
- Magnum Materials
- Baldwin Angus Ranch

NW 49th ST/NW 35th ST EXTENSION



Future East-West Corridor

Phase 2C

- New I-75 Interchange
- Extension of NW 49th Street

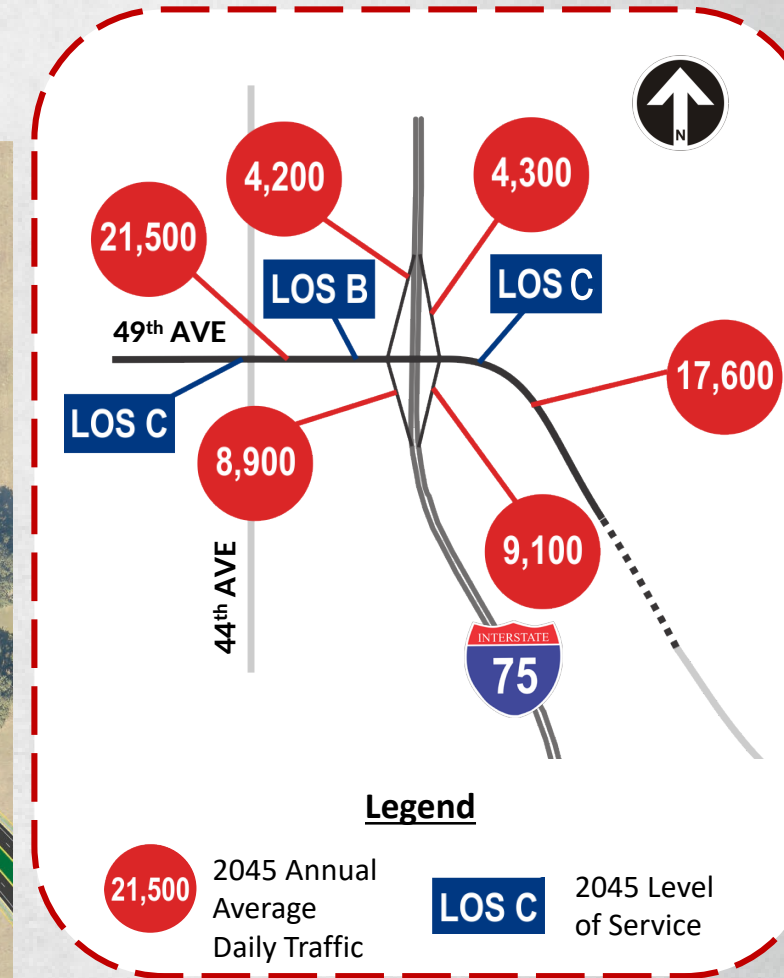
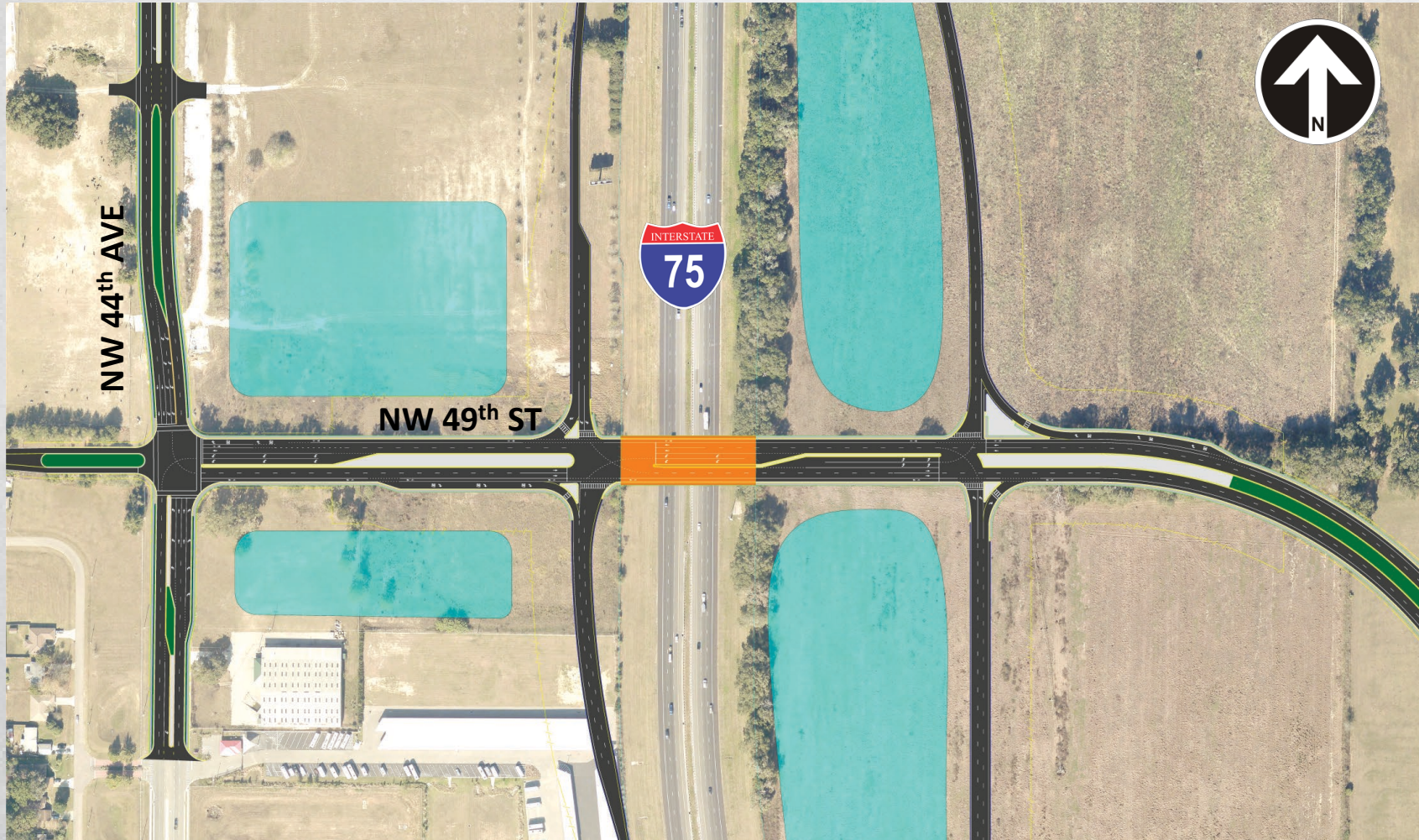
Phase 2B

- Extension of NW 35th Street to Phase 2C
- Currently in final design by Marion County

- Proposed: Interchange Location
- Ocala 489 Commerce Park
- Magnum Materials
- Baldwin Angus Ranch

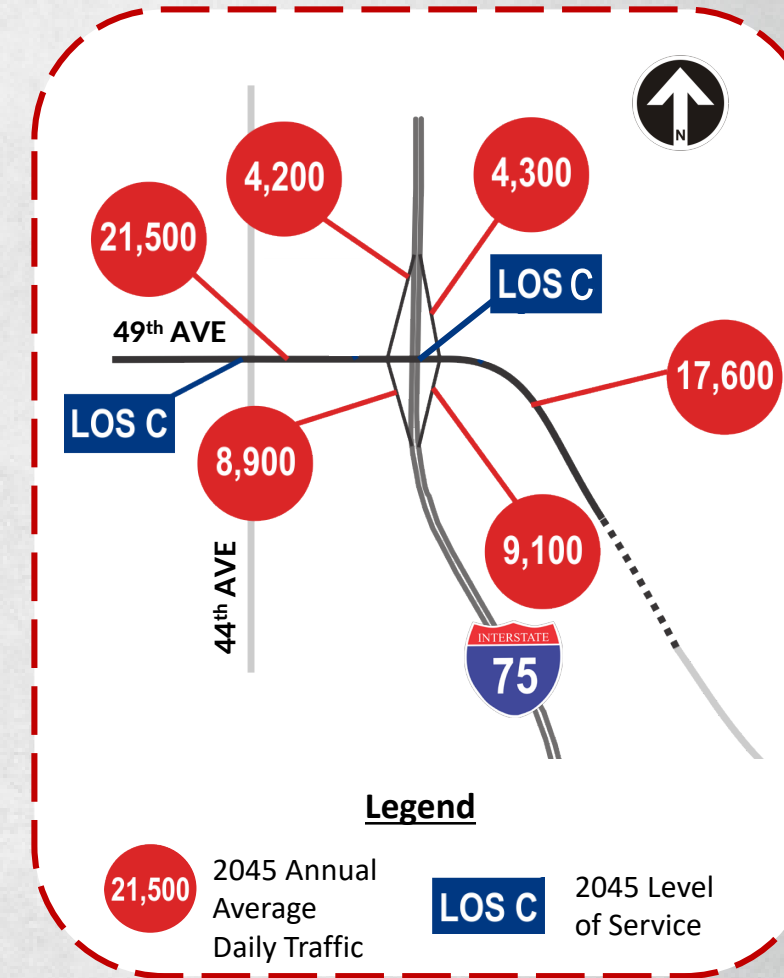
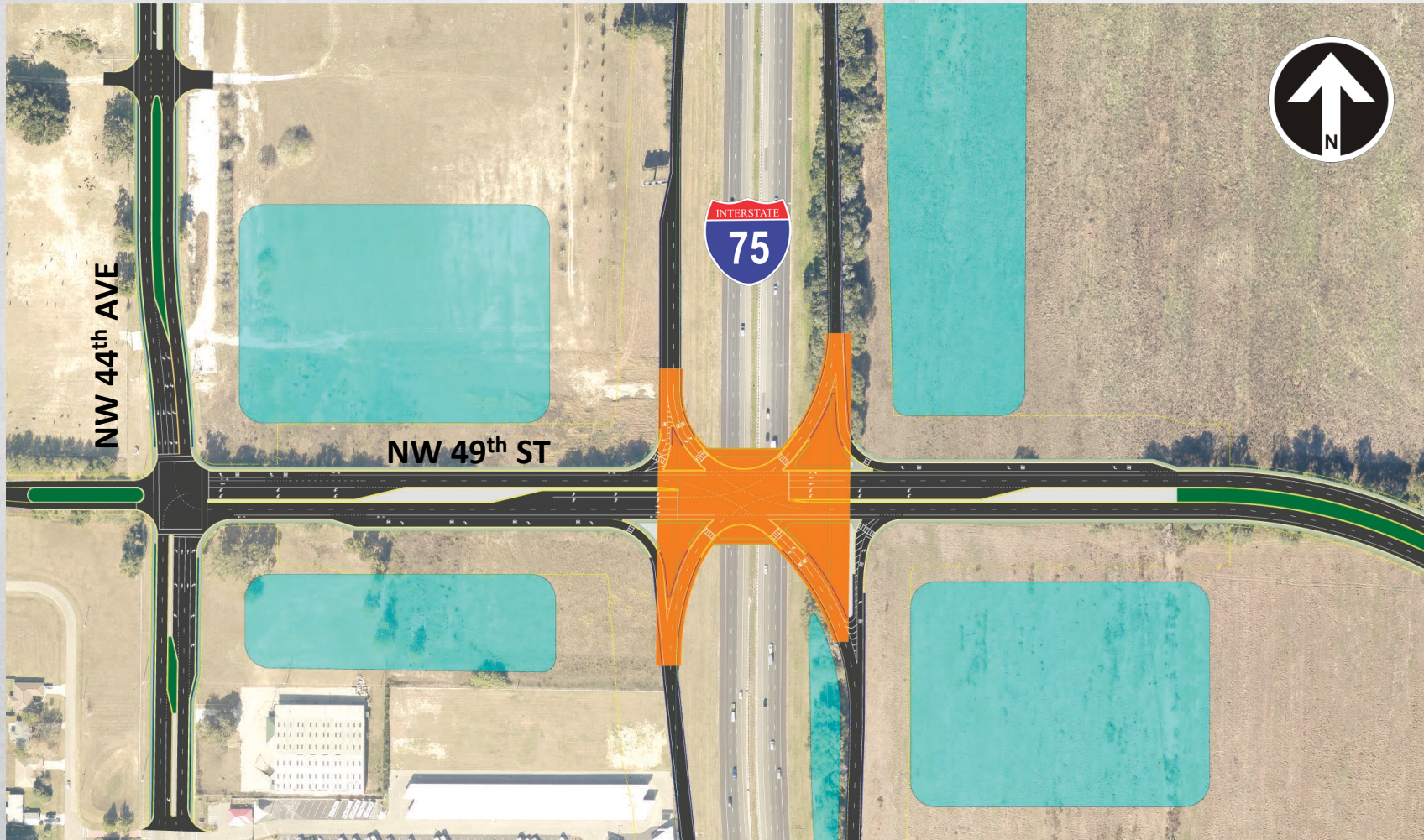
I-75 AT NW 49th STREET ALTERNATIVES

DIAMOND INTERCHANGE ALTERNATIVE



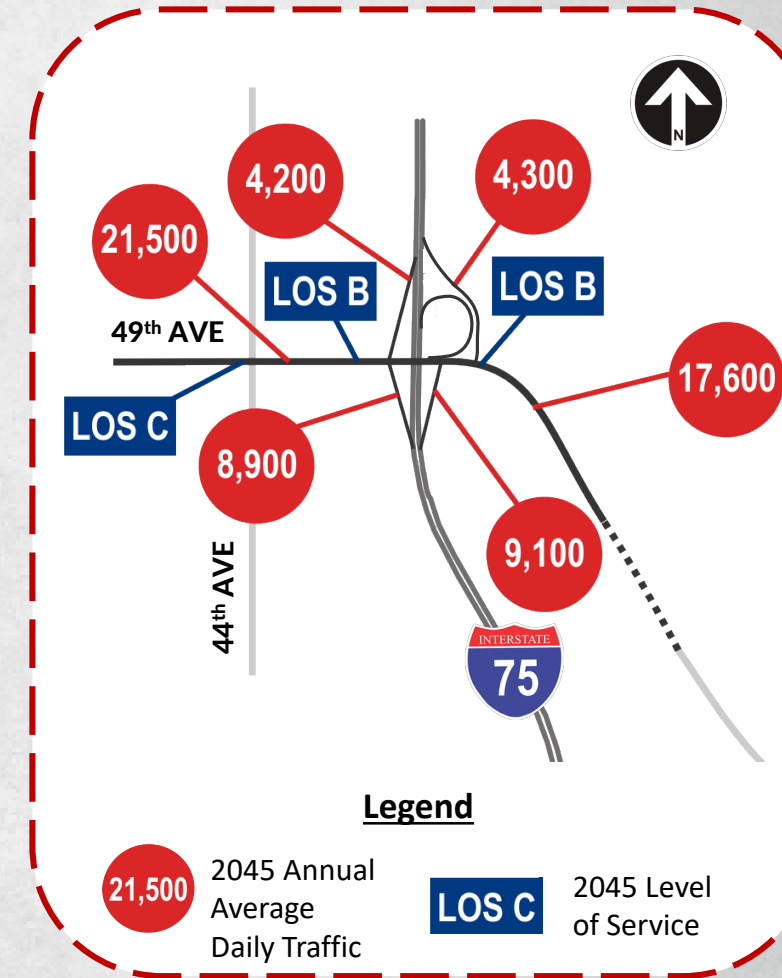
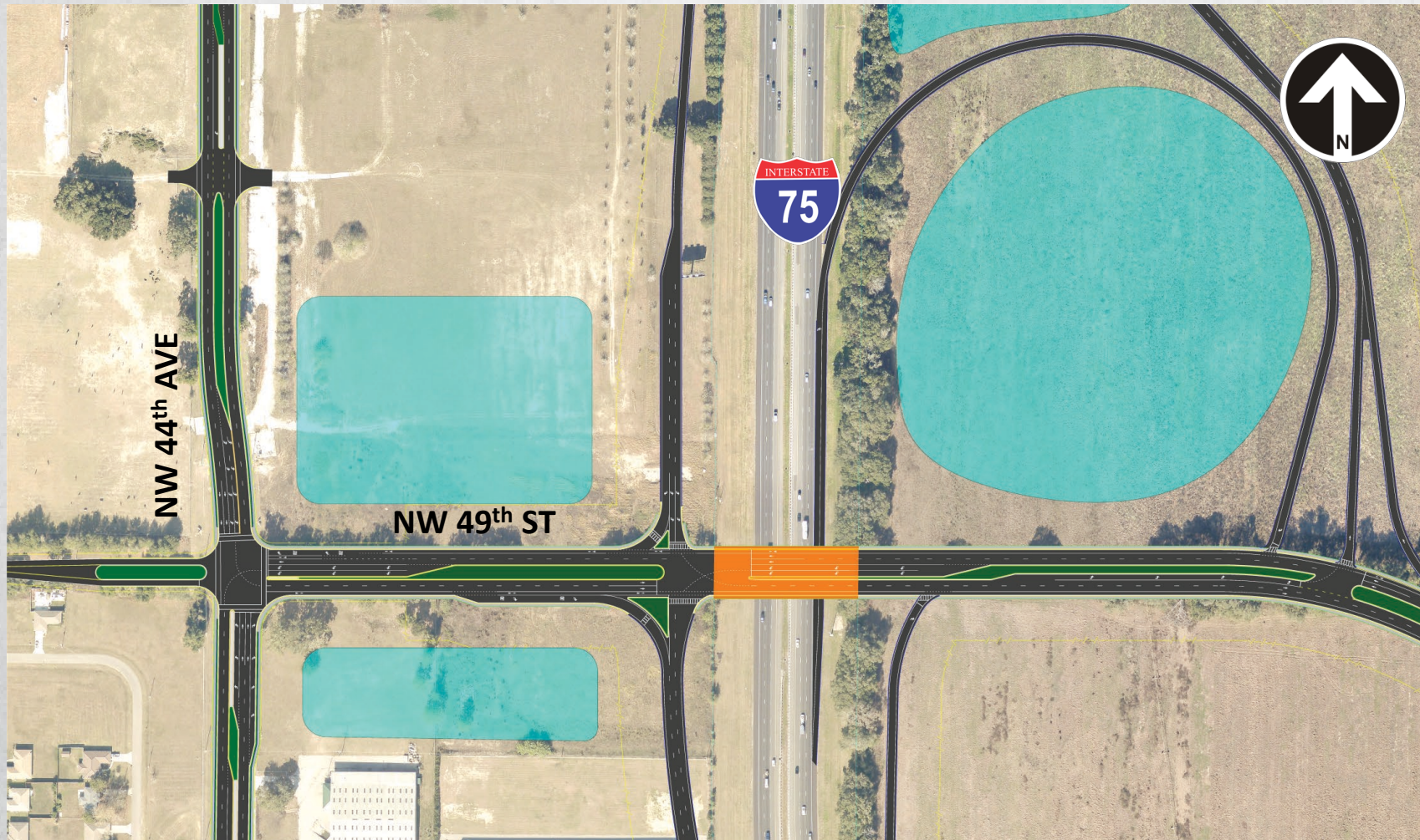
I-75 AT NW 49th STREET ALTERNATIVES

SINGLE POINT URBAN INTERCHANGE



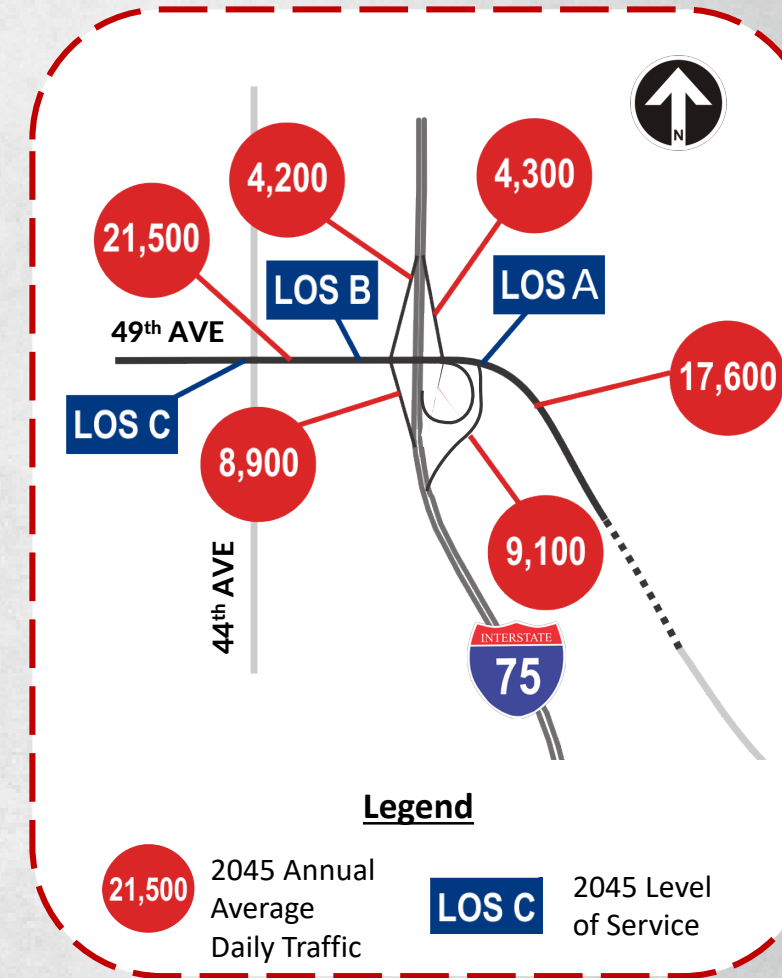
I-75 AT NW 49th STREET ALTERNATIVES

PARTIAL CLOVERLEAF NORTH EAST



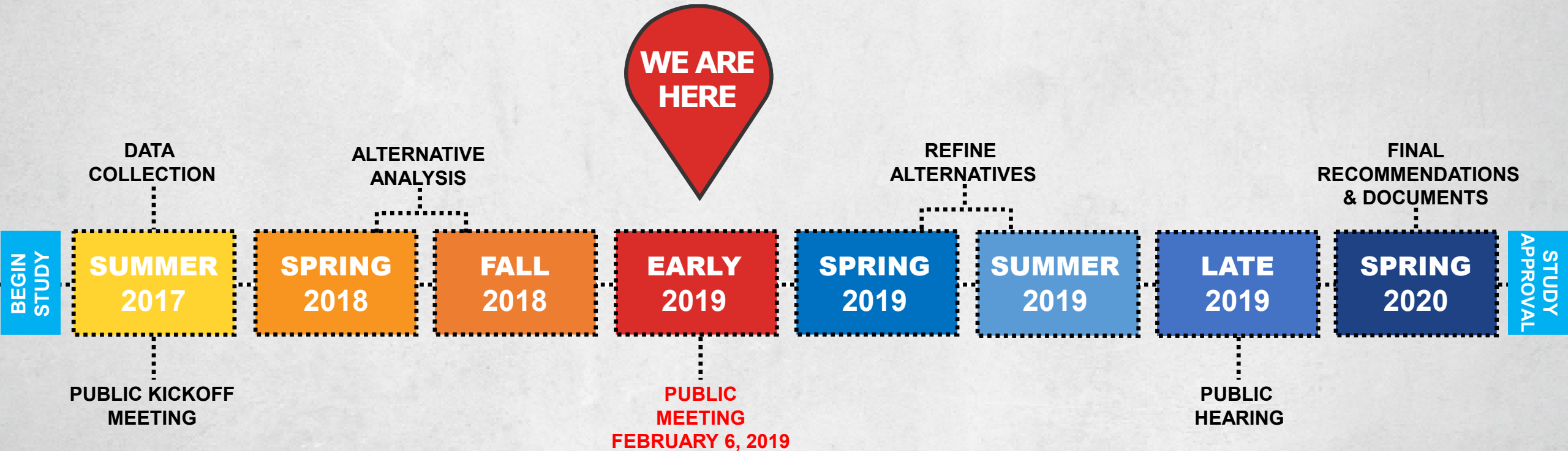
I-75 AT NW 49th STREET ALTERNATIVES

PARTIAL CLOVERLEAF SOUTH EAST



NEXT STEPS

FURTHER REFINE AND EVALUATE DESIGN ALTERNATIVES



THANK YOU





District Five

Tentative Five-Year Work Program

Fiscal Year 2020 to Fiscal Year 2024



About the FDOT Work Program

- The FDOT Work Program is a five-year plan that includes:
 - public transit, seaport, airport and rail projects
 - transportation planning, Transportation Systems Management & Operations, engineering and design, right of way acquisition and construction activities
- Includes FDOT projects and local projects with FDOT involvement





ABOUT WORK PROGRAM

CURRENT ADOPTED

**YEAR
1**

FY 2019

**YEAR
2**

FY 2020

**YEAR
3**

FY 2021

**YEAR
4**

FY 2022

**YEAR
5**

FY 2023

FDOT's current adopted Work Program runs from Fiscal Year (FY) 2019 (which began on July 1, 2018) until FY 2023 (which ends on June 30, 2023).



ABOUT WORK PROGRAM

T E N T A T I V E



FY 2020



FY 2021



FY 2022



FY 2023



After the work program is updated by FDOT staff to incorporate changes in needs and costs, and consider changes in project prioritization, it is considered “Tentative” and a public hearing is held.

Then, the Tentative Work Program is submitted to the Florida Legislature for review and then to the Governor for review and signature.



ABOUT WORK PROGRAM

A D O P T E D

**YEAR
1**

FY 2020

**YEAR
2**

FY 2021

**YEAR
3**

FY 2022

**YEAR
4**

FY 2023

**YEAR
5**

FY 2024

After the Governor signs the Work Program, it is considered Adopted and the first year of projects is officially included in the State budget.



PROGRAM DEVELOPMENT

Type of Projects:

- Safety & Security
- System Preservation
- Pedestrian & Bicycle
- Multimodal Enhancements
- Operational Improvements
- Capacity Improvements

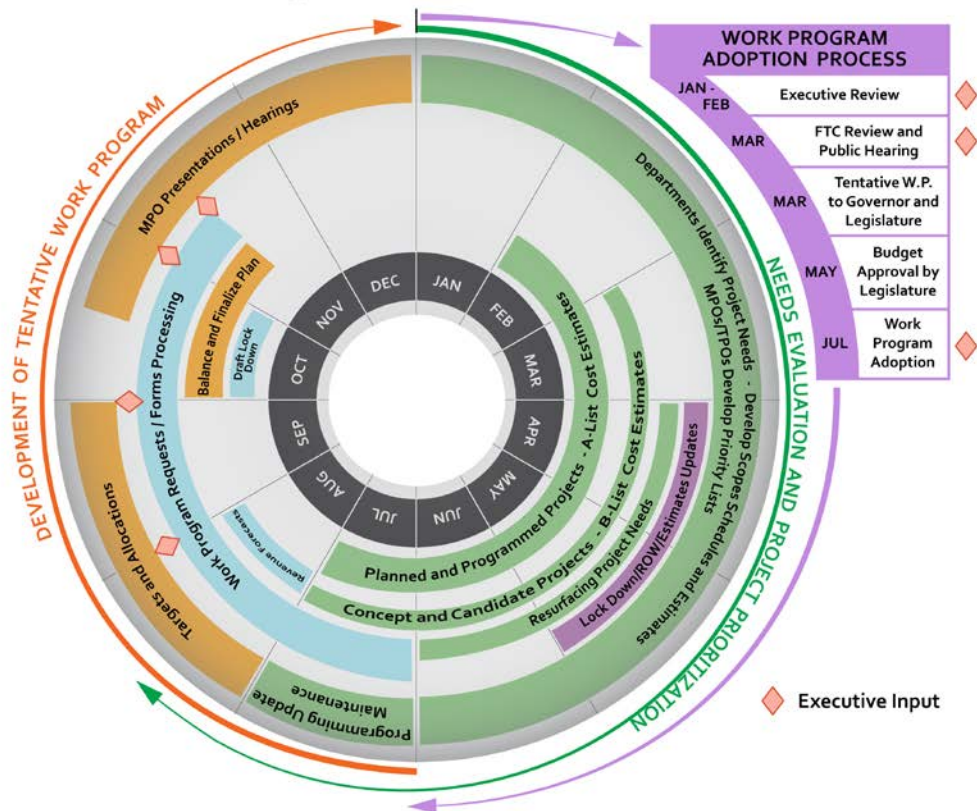
Based On:

- MPO Priorities
- SIS/FDOT Priorities





WORK PROGRAM DEVELOPMENT PROCESS



TOTAL DISTRICT FIVE WORK PROGRAM FUNDING

The Five-Year Outlook

FY 2020	FY 2021	FY 2022	FY 2023	FY 2024	TOTAL
\$1,648,091,181	\$1,422,814,939	\$1,988,177,150	\$1,160,203,379	\$1,050,656,869	\$7,269,943,518

WORK PROGRAM FUNDING-

Impacts to Work Program

Right of Way Costs:

- Real Estate prices up an average of 15% statewide

Increased Construction Costs:

- Price of steel up 30%
- Material and Commodity Costs up approximately 9% overall
- Fabricated bridges up 25%

Revenue:

- Reduced due to growth of fuel-efficient vehicles
- Bills passed in 2018 reduced revenue by \$71.2 million
 - Sales tax, property tax, corporate income tax, doc stamp



District Five

Project Highlights





Planning

FM# 443623-1:

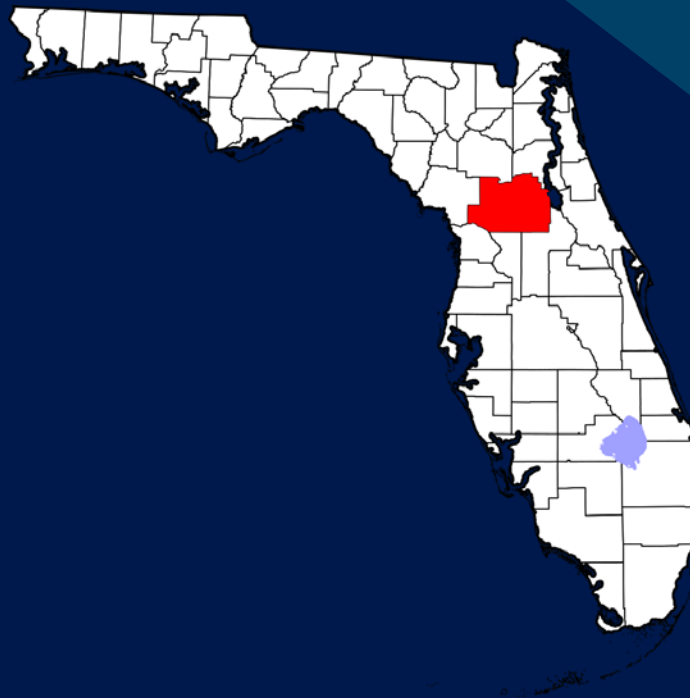
PD&E Study-I-75 from the Turnpike to State Road (S.R.) 200

- \$6,800,000-Notice to Proceed November 2019

FM# 443624-1:

PD&E Study-I-75 from S.R. 200 to County Road (C.R.) 234

- \$7,090,000-Notice to Proceed November 2019



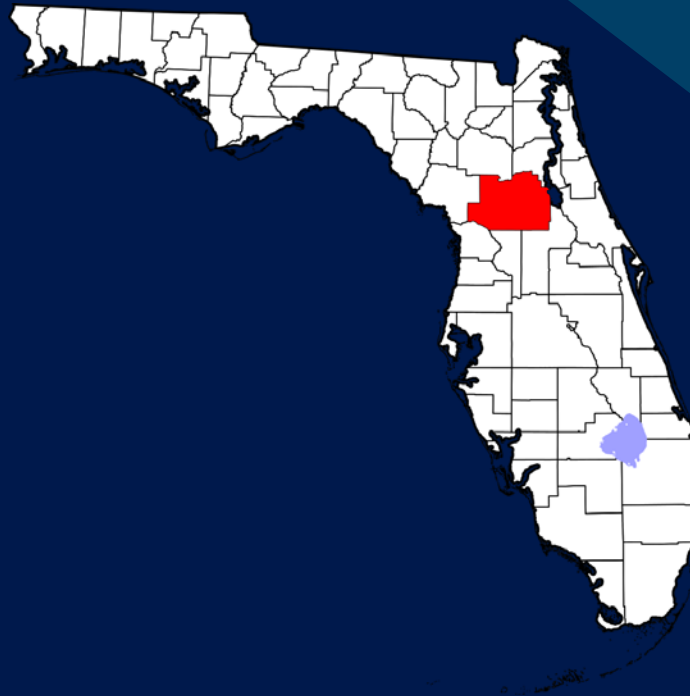


Safety

FM# 441366-1:

Access Management-State Road (S.R.) 40
from SW 27th Avenue to Martin Luther King
Jr. Avenue

- Construction phase added to FY 2021



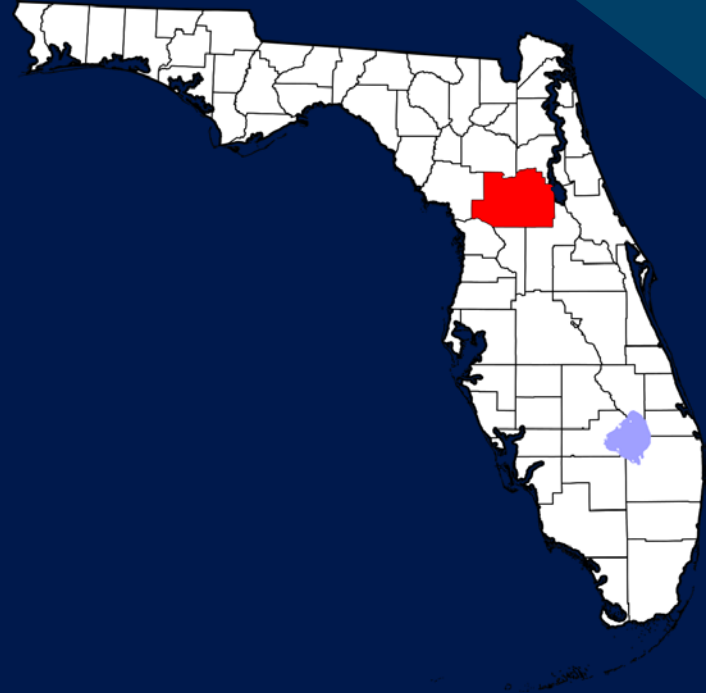


Preservation

FM# 443170-1:

**Resurfacing-S.R. 93/I-75 from the
Sumter/Marion County Line to S.R. 200**

- Design phase added to FY 2020
- Construction phase added to FY 2022





Capacity

FM# 410674-2:

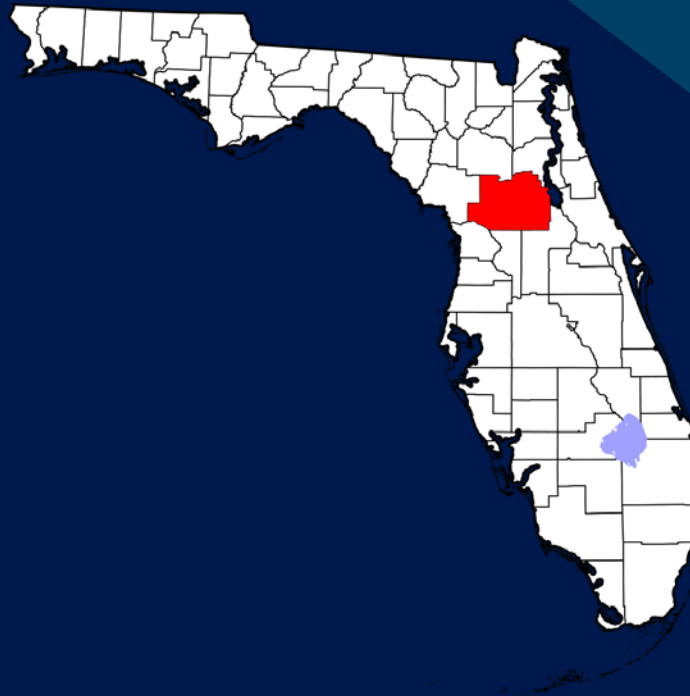
Widening-S.R. 40 from the end of four (4) lanes to east of County Road (C.R.) 314

- Construction phase in FY 2020 cost increased from \$119,394,975 to \$132,239,162

FM# 238648-1:

Widening-S.R. 45/U.S. 41 from SW 110th Street to north of S.R. 40

- Construction phase deferred from FY 2022 to FY 2024





Capacity

FM# 435208-1:

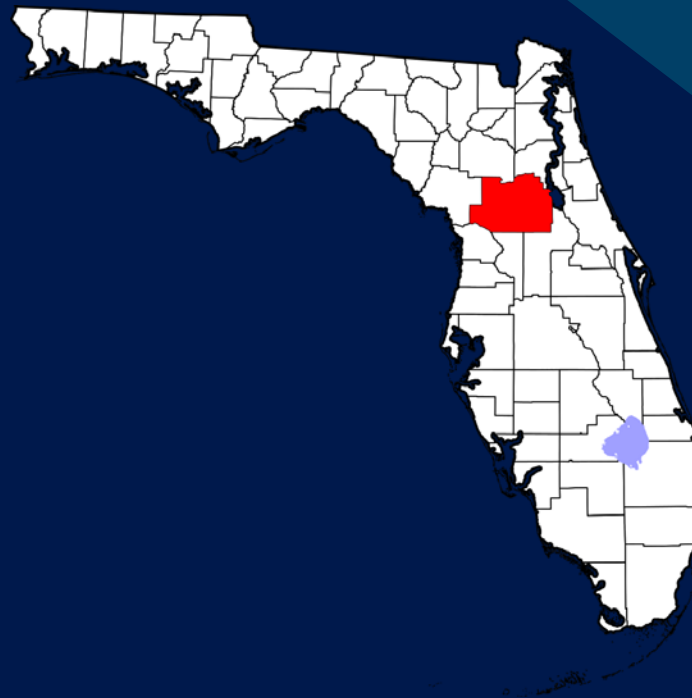
Intersection Improvements-S.R. 35 at Foss Road, Robinson Road and S.R. 25

- Design phase deleted from FY 2020

FM# 410674-2:

Widening-S.R. 40 from the end of the four lane section to east of C.R. 314

- Construction phase deferred from FY 2020 to FY 2021





Landscape

FM# 443703-1:

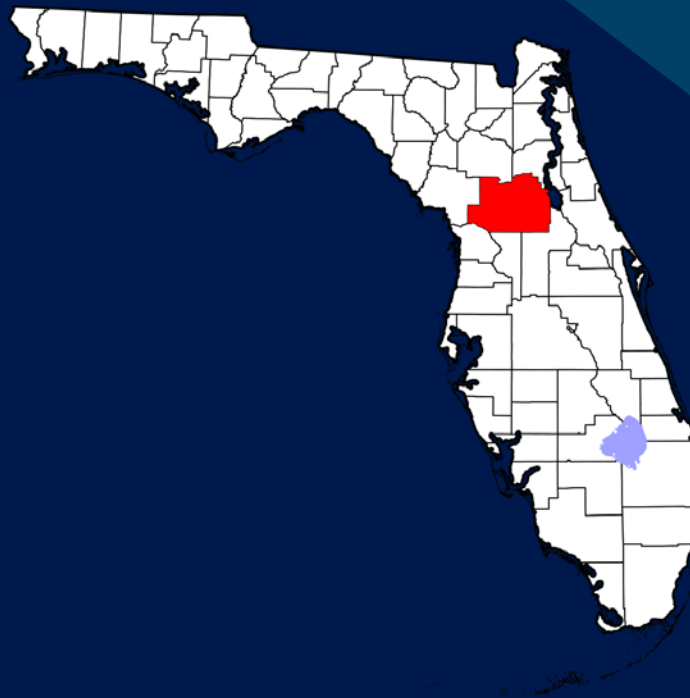
S.R. 35/SE 58th Avenue from County Road (C.R.) 464/SE Maricamp Road to S.R. 40

- Construction phase added to FY 2022

FM# 443730-1:

U.S. 301/U.S. 441 Split (the "Y") from just south of the split to just north of the split

- Construction phase added to FY 2022





Landscape

FM# 444767-1:

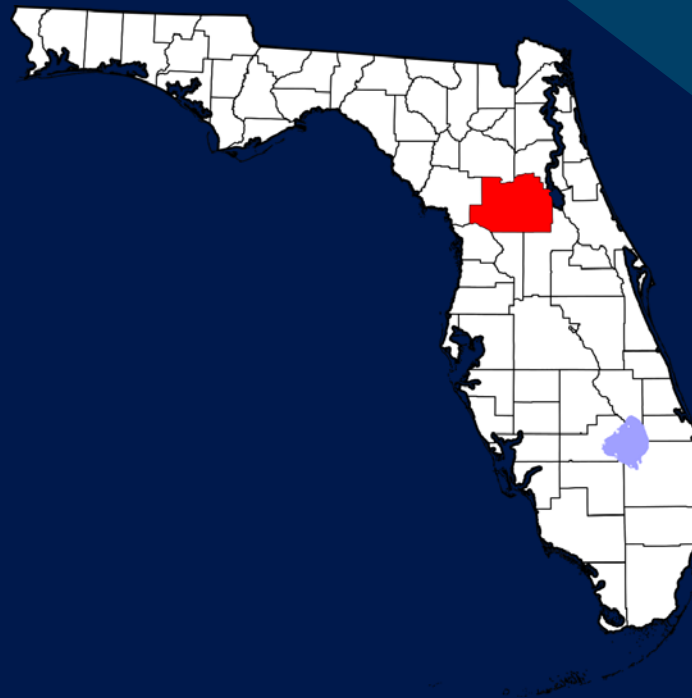
**U.S. 441 slopes at railroad overpass
between SE 3rd Avenue and SE 30th Street**

- Construction phase added to FY 2020

FM# 437826-1:

Various Rest Areas on S.R. 93/I-75

- Construction phase deferred from FY 2022
to FY 2024



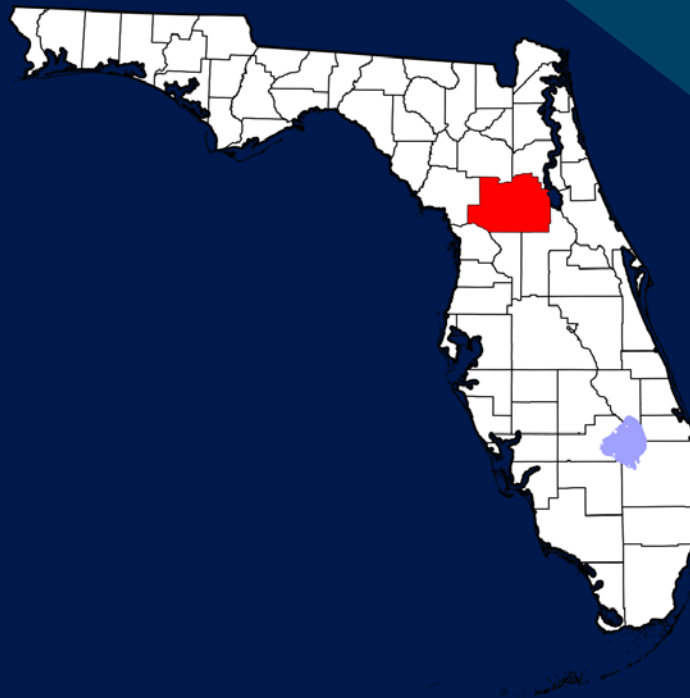


Bike/Pedestrian

FM# 435486-1:

Silver Springs Trail-From the SE 64th Avenue Trailhead to Silver Springs State Park

- Construction phase moved out from FY 2020 to FY 2025



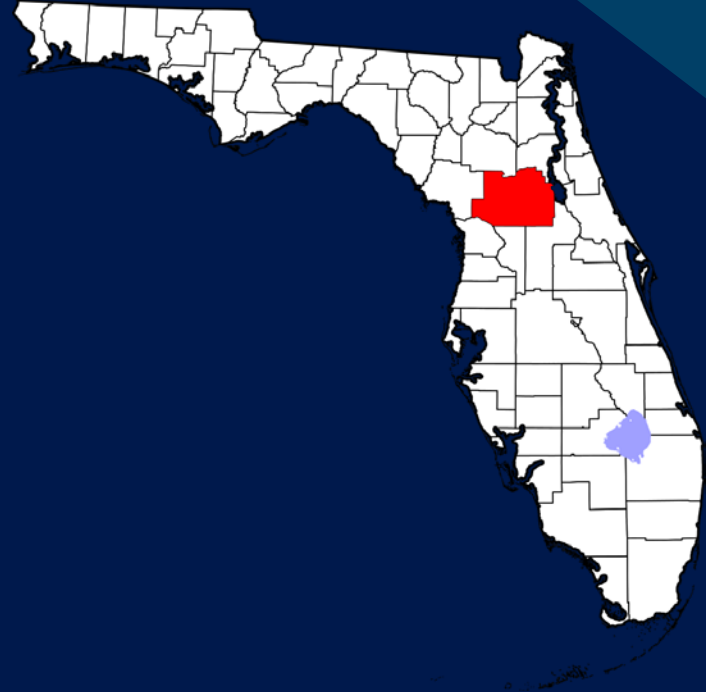


Miscellaneous

FM# 438562-1:

Rest Area-S.R. 93/I-75 from north of S.R. 484 to south of S.R. 200

- Construction phase in FY 2023 cost increased from \$25,711,449 to \$40,892,550





Additions

Funding for Additions to the Five-Year Work Program: \$38,377,312

- **Safety: \$504,287**
- **Preservation: \$36,290,930**
- **Landscaping: \$1,582,095**





Thank You

Loreen Bobo, P.E., Director of Transportation Development

Contact: Vickie Wyche

Phone: 386-943-5185

Email: Vickie.Wyche@dot.state.fl.us

www.D5WPPH.com



FDOT District Five - Ocala Operations
627 Northwest 30th Avenue
Ocala, Florida 34475
352-732-1338

Outside Consultant
In-House Construction
Maintenance

Project Status Report as of January 28, 2019

MARION						
SR 492/NE 14th Street from US 441 to SR 40						
FIN #	430655-1-52-01					
CONTRACT #	T5616					
Lump Sum						
PROJECT DESCRIPTION: Mill and resurface SR 492/NE 14th Street between US 301/441 (Pine Avenue) to SR 40. Project also includes ADA pedestrian signal, sidewalk and curb ramp upgrades.						
					TIME	COST
CONTRACTOR:	Anderson Columbia Co. Inc.	LET DATE:	3/28/2018	ORIGINAL:	260	\$4,231,482.75
FED. AID #:	D517067B	NTP:	5/25/2018	CURRENT:	309	\$4,217,417.42
FUND TYPE	Construction Lump Sum	TIME BEGAN:	6/24/2018	ELAPSED:	217	\$3,714,660.33
		WORK BEGAN:	6/24/2018	% ORIGINAL:	83.46%	87.79%
		EST. COMPLETION:	Spring 2019	% TO DATE:	70.23%	88.08%
CONTACT			PHONE		EMAIL	
PROJECT ADMINISTRATOR		Nicole Aiton	O: 352-620-3012 C: 352-812-5796		nicole.aiton@dot.state.fl.us	
CONTRACTOR'S PROJECT MANAGER:		Austin Miller	C: 386-515-5204		austin.miller@andersoncolumbia.com	

MARION						
SR 200 from east of Southwest 60th Avenue to east of Southwest 38th Court						
FIN #	437344-1-52-01, 435659-2-52-01					
CONTRACT #	T5605					
Lump Sum						
PROJECT DESCRIPTION: Work includes resurfacing of SR 200, and widening and adding turn lanes at SR 200 and I-75.						
					TIME	COST
CONTRACTOR:	D.A.B. Constructors Inc.	LET DATE:	3/28/2018	ORIGINAL:	400	\$7,668,888.88
FED. AID #:	N/A	NTP:	6/01/2018	CURRENT:	405	\$7,668,888.88
FUND TYPE	Lump Sum	TIME BEGAN:	8/30/2018	ELAPSED:	144	\$1,140,613.89
		WORK BEGAN:	8/30/2018	% ORIGINAL:	36.00%	14.87%
		EST. COMPLETION:	Spring 2020	% TO DATE:	35.56%	14.87%
CONTACT			PHONE		EMAIL	
PROJECT ADMINISTRATOR		John Davis	C: 813-848-4660		jdavis@aeengineeringinc.com	
FDOT PROJECT MANAGER		Denise Larkin	O: 352-620-3007		denise.larkin@dot.state.fl.us	
CONTRACTOR'S PROJECT MANAGER:		Kathy Barnes	C: 813-924-5169		kathrynb@dabcon.com	

MARION						
SR 200 from west of CR 484 to east of SW 60th Avenue						
FIN #	436879-1-52-01					
CONTRACT #	T5624					
Construction Lump Sum						
PROJECT DESCRIPTION: Resurfacing, as well as adding a bike lane, adding a left turn lane on S.R. 200 to northbound SW 60th Avenue, and updating curb, gutter, signage, signalization and various pedestrian improvements to comply with the current Americans with Disabilities Act (ADA) standards.						
					TIME	COST
CONTRACTOR:	Anderson Columbia Co., Inc.	LET DATE:	7/25/2018	ORIGINAL:	350	\$9,260,071.09
FED. AID #:	D517069B	NTP:	9/25/2018	CURRENT:	374	\$9,260,071.09
FUND TYPE	Lump Sum	TIME BEGAN:	10/25/2018	ELAPSED:	88	\$603,310.69
		WORK BEGAN:	10/25/2018	% ORIGINAL:	25.14%	6.52%
		EST. COMPLETION:	Fall 2019	% TO DATE:	23.53%	6.52%
CONTACT			PHONE		EMAIL	
PROJECT ADMINISTRATOR		Nicole Aiton	O: 352-620-3012 C: 352-812-5796		nicole.aiton@dot.state.fl.us	
CONTRACTOR'S PROJECT MANAGER:		Tom Hysell	C: 352-494-4858		tom.hysell@andersoncolumbia.com	

Project Status Report as of January 28, 2019

Landscaping Projects in Establishment Period

MARION			
I-75 Landscaping at SW 20th Street and SW 43rd Street			
FIN #	437828-1-52-01	Contract Days: 820	Days Elapsed: 573
CONTRACT #	E5Y94	Present Amount: \$438,500.00	Paid to Date: \$385,650.00

MARION			
I-75 Landscaping at CR 318			
FIN #	437818-1-52-01	Contract Days: 868	Days Elapsed: 741
CONTRACT #	E5Y29	Present Amount: \$412,920.00	Paid to Date: \$395,436.30

Upcoming project:

State Road 500/US 27 Milling and Resurfacing from the Levy County line to County Road 326

- Project also includes adding a right turn lane from southbound US 27 to Northwest 160th Avenue and drainage improvements
- Project to start in late February 2019
- Estimated completion is early 2020
- Contractor: Whitehurst, V.E. & Sons, Inc.
- Project Cost: \$7.2 million
- Motorists can expect lane closures during the day or at night
- FDOT Project Manager: Ronda Daniell, 352-620-3005, ronda.daniell@dot.state.fl.us