

**NAVIGATING THE FUTURE**

**2050**

The number '2050' is rendered in a large, bold, dark blue font. The zero in the middle contains a graphic of a road with a dashed white center line and blue shading on either side. Below the zero is a light blue location pin shape pointing downwards. A thick dark blue horizontal line is positioned below the numbers.

**Long Range Transportation Plan**

## VISION

Develop a **SAFE, ACCESSIBLE**, and **EFFICIENT MULTIMODAL** transportation system to best serve the **COMMUNITY** and **ENVIRONMENT**.

## GOALS

Prioritizing **Safety and Security** for all users

Promoting **System Preservation and Resiliency** to adapt to future changes

Creating **Quality of Life & Places** through accessible transportation

Promote Accessible **Multimodal Travel** Choices

Address **Community Needs**

Supporting local and regional **Economic Development** by connecting communities and businesses

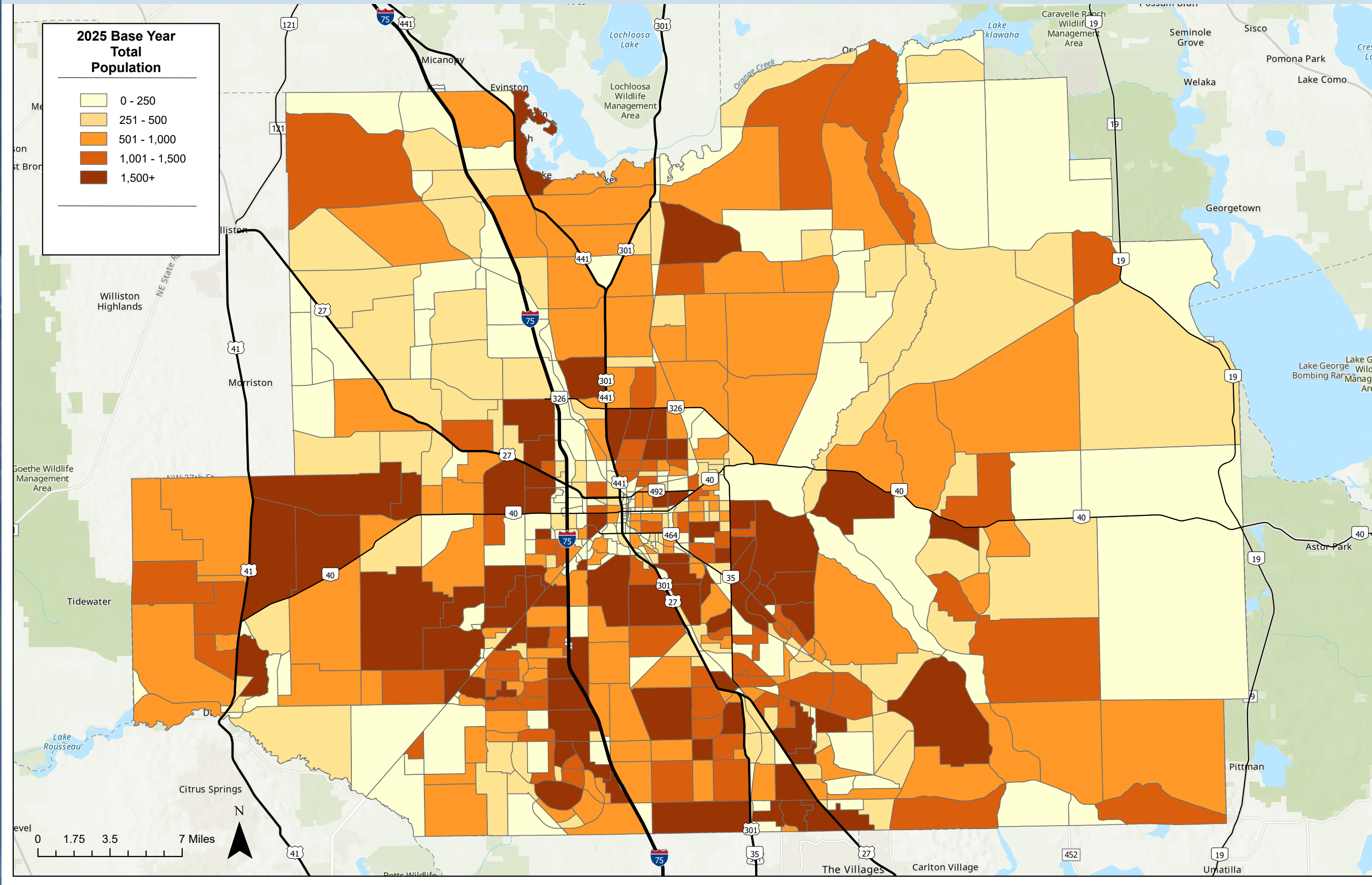
Safeguarding the environment with a focus on **Environmental Protection**

Emphasizing **Implementation** to turn plans into outcomes

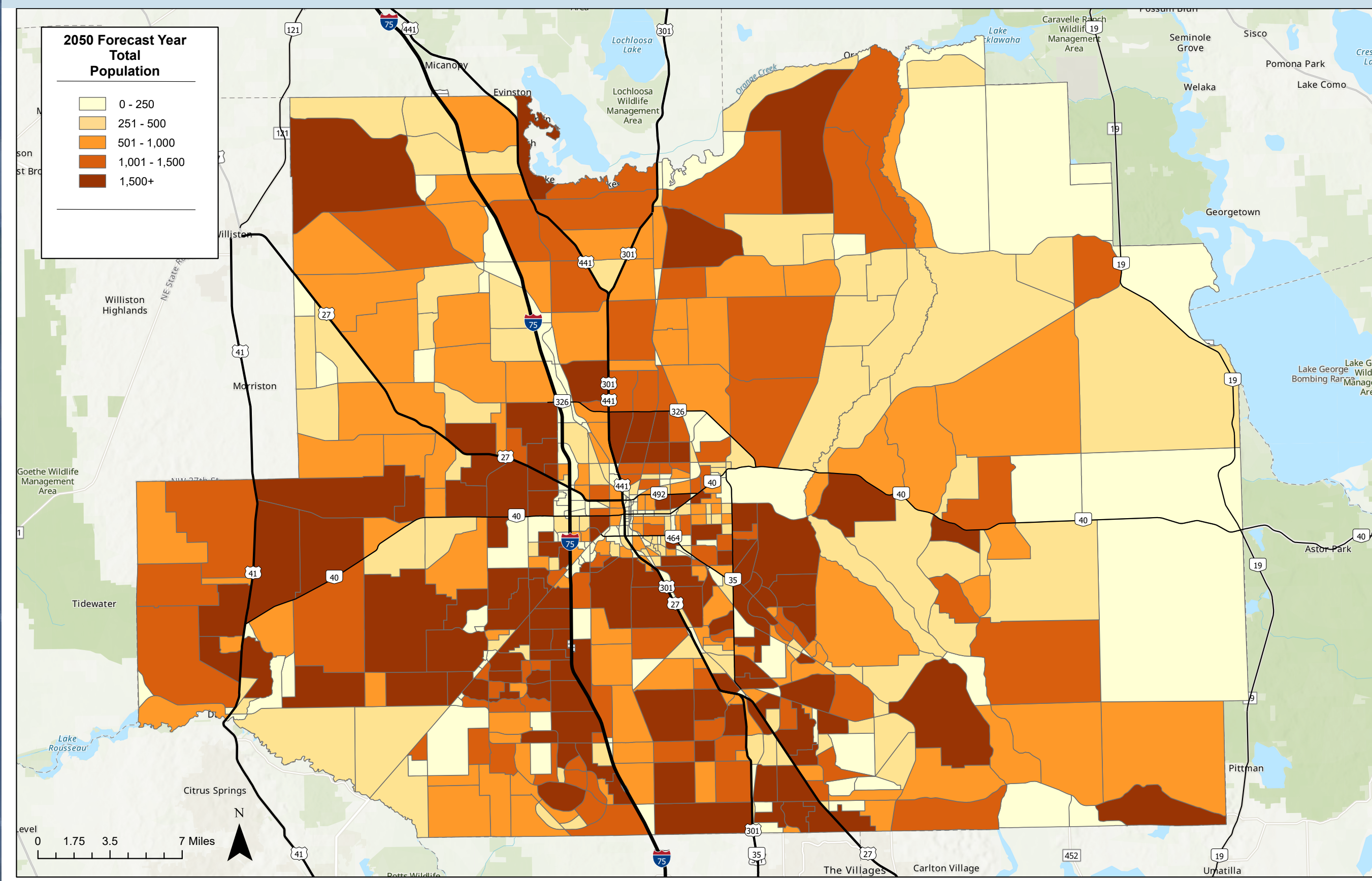


# Projected Population Growth in Marion County

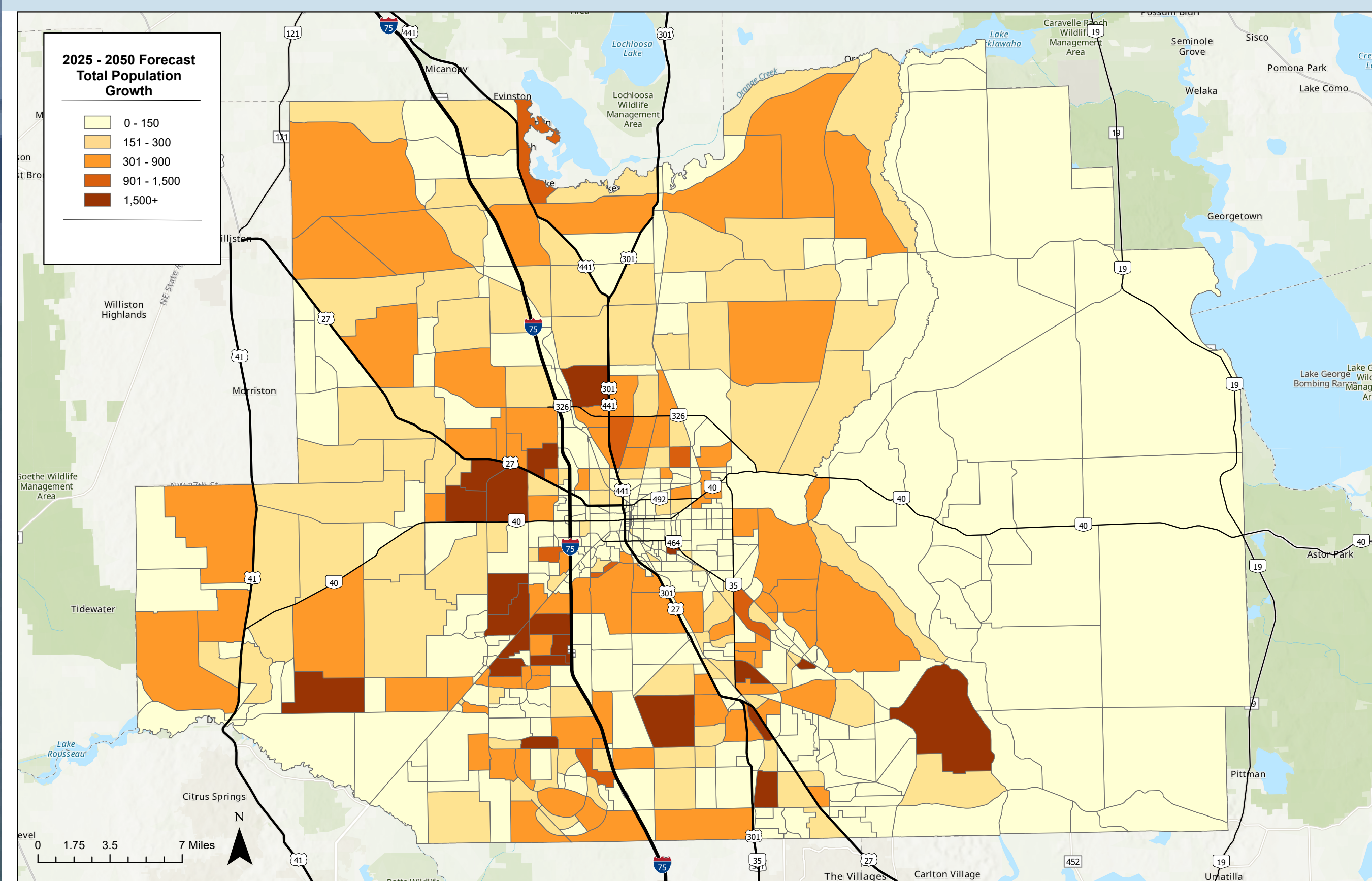
## Total Population 2025 Estimate



## Total Population 2050 Forecast



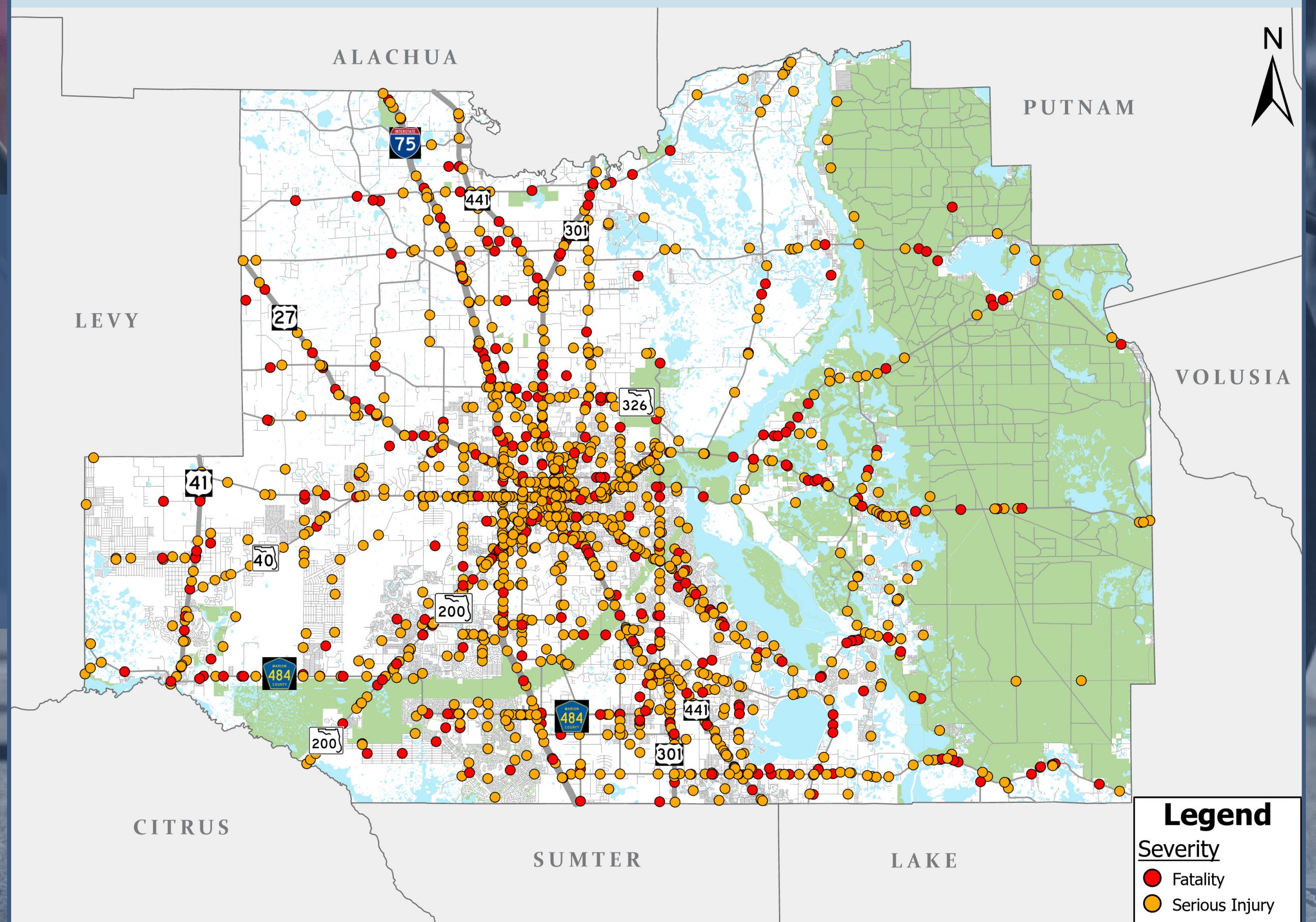
## Total Population Growth Forecast 2025-2050



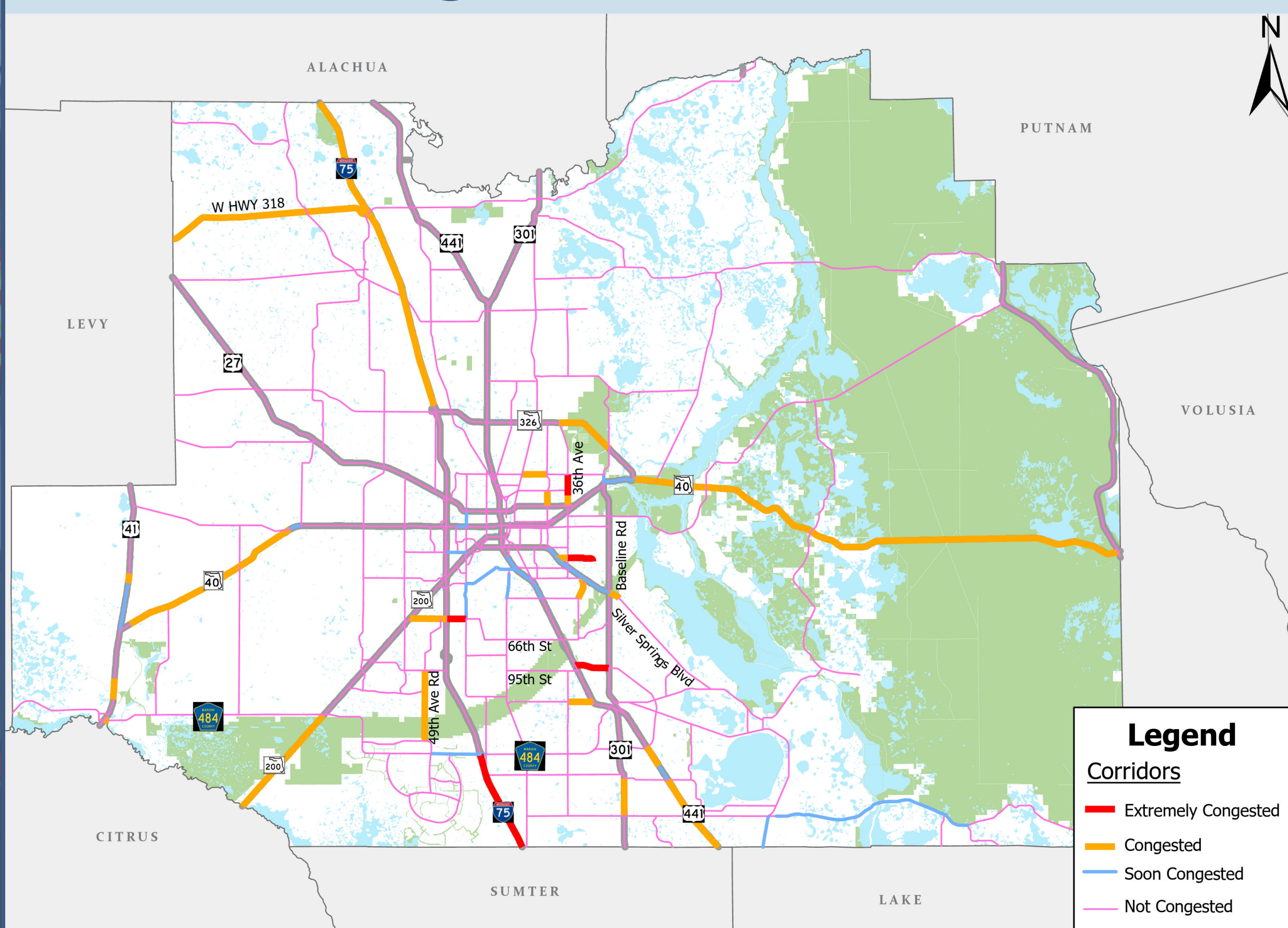
## Safety

The public is concerned with safety especially fatal and severe injury crashes.

### Fatal and Serious Injury Crashes



### Congested Corridors



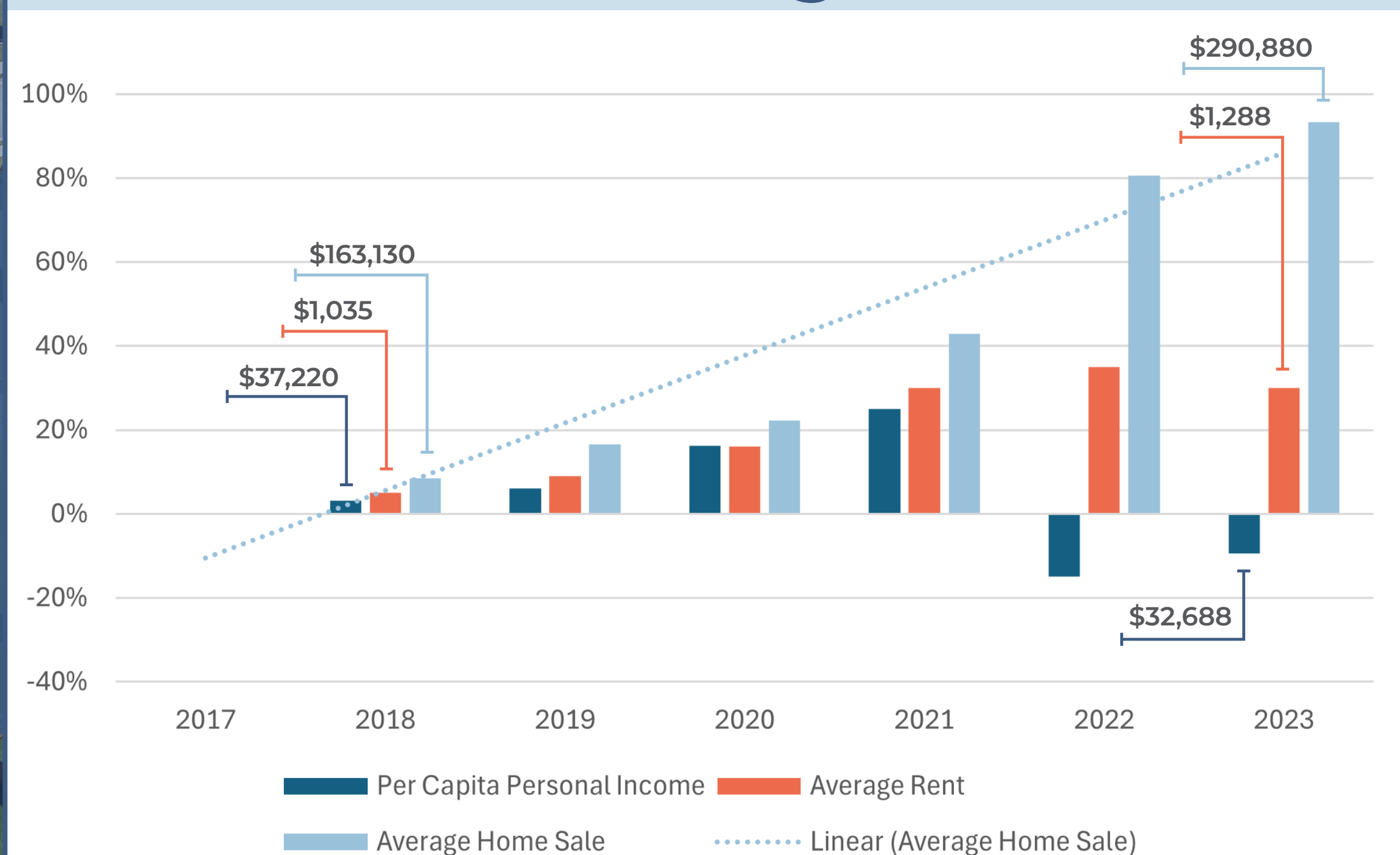
## Growth and Congestion

Significant growth has resulted in concerns with traffic congestion.

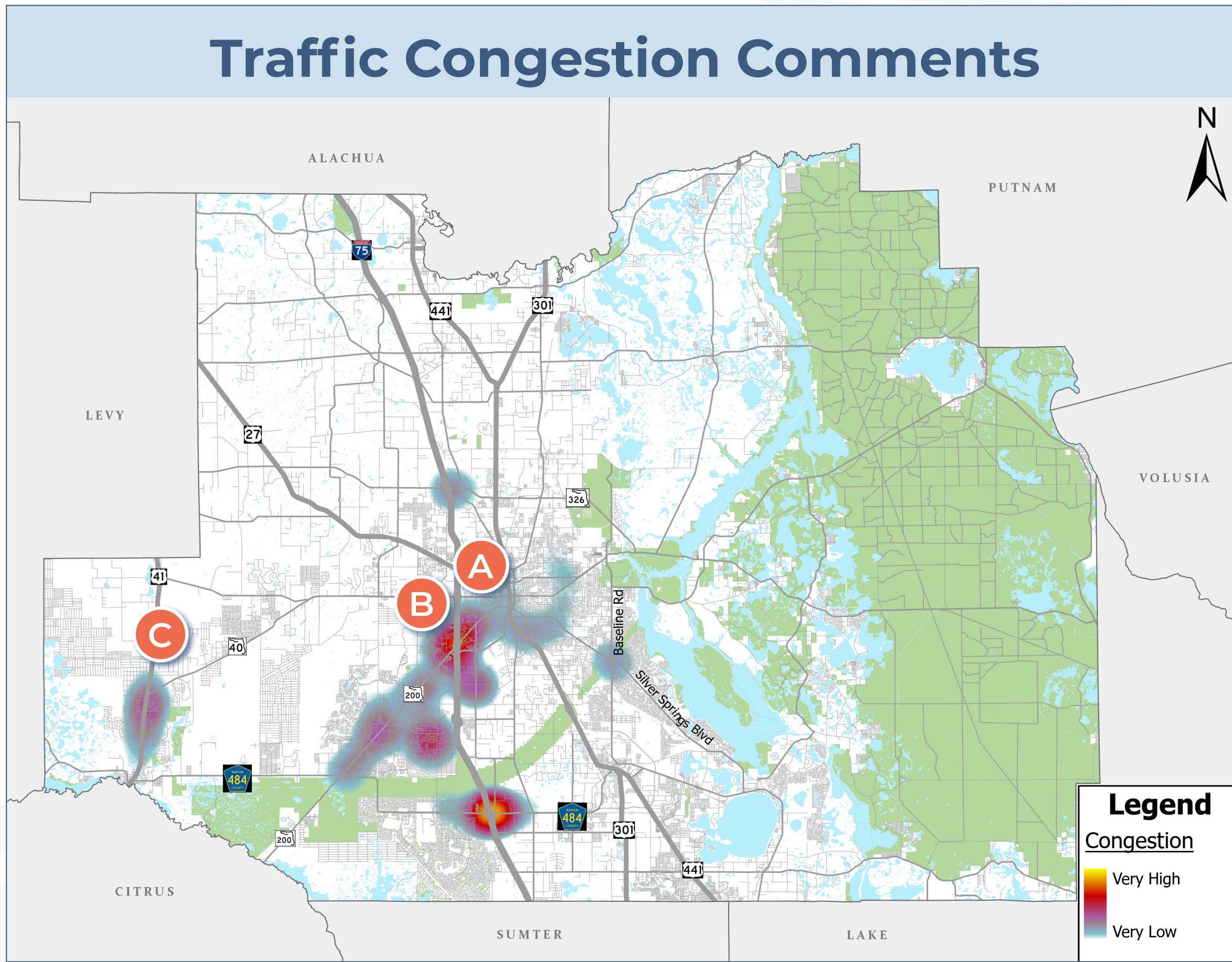
## Affordable Housing

Demand for housing and increased labor and material costs are increasing home prices and rents faster than income growth.

### Percent Change in Income and Housing Costs



A recent survey of Marion County residents asked where they saw issues with congestion and safety. The maps below highlight the areas of the county with the most issues



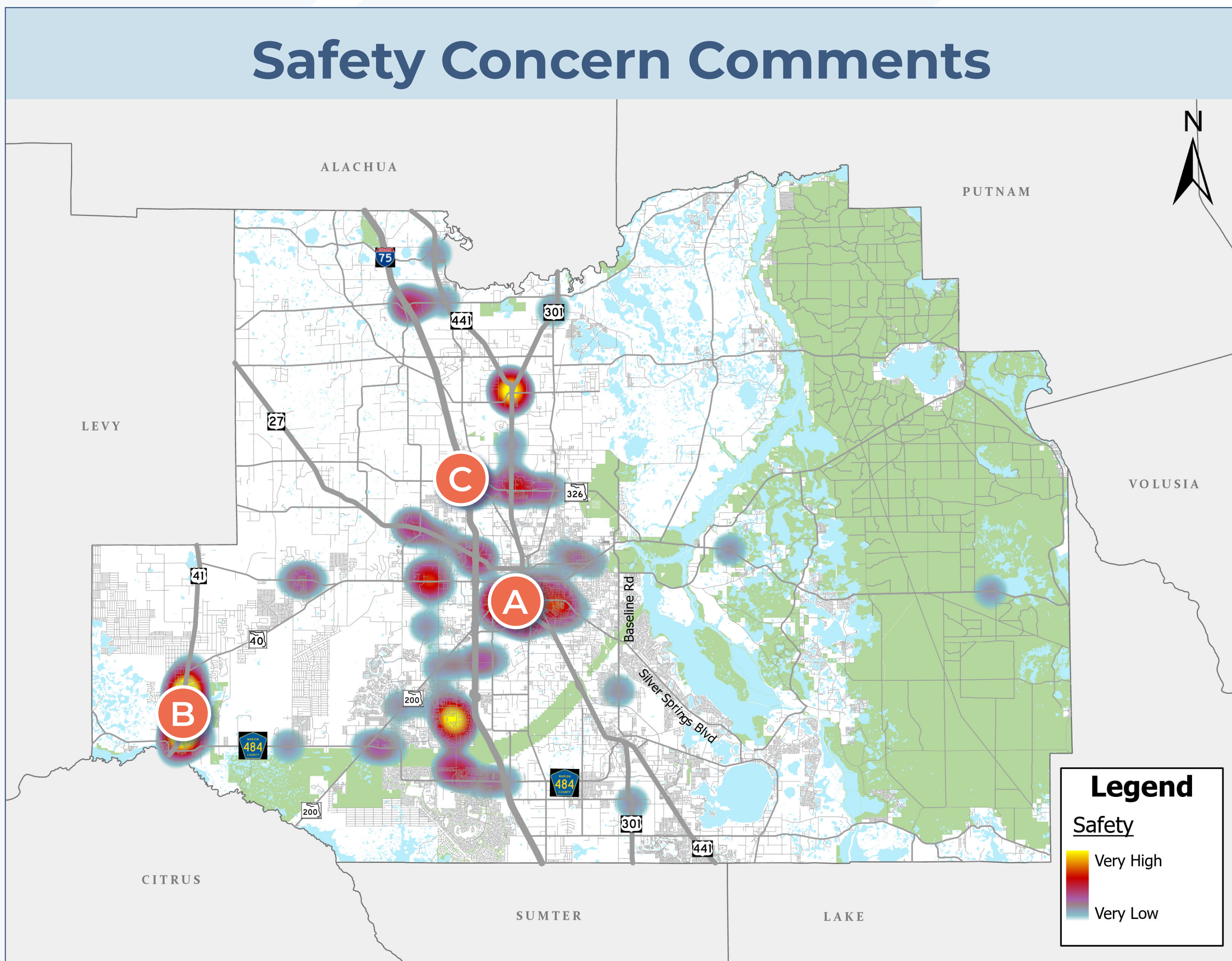
- A Congestion and Lack of Lanes

---

- B Lack of Lanes and Good Signal Timing

---

- C Lack of Lanes and Good Signal Timing



- A Intersection Safety Issues

---

- B High Speeds and Missing Sidewalks/Crossings

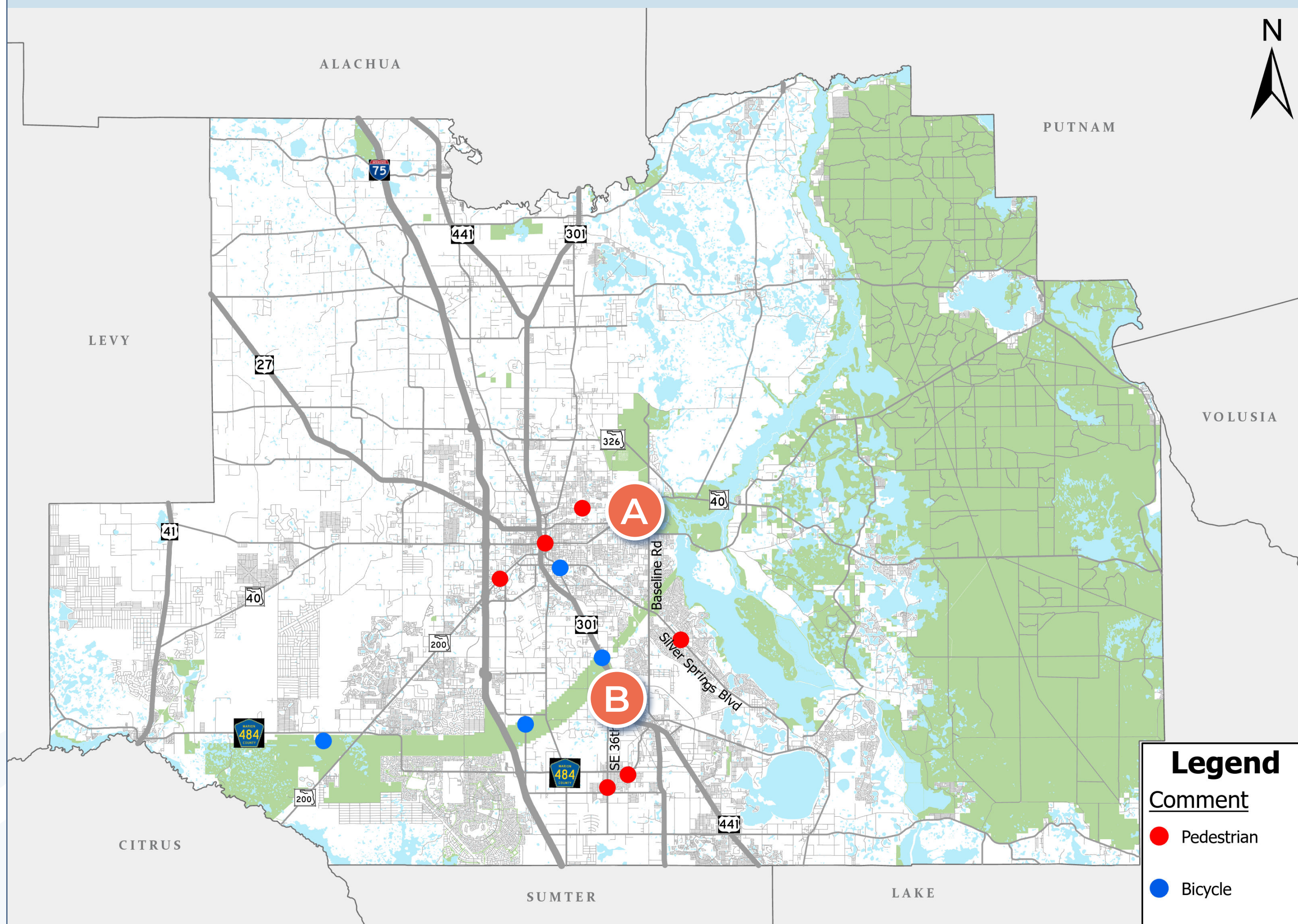
---

- C Congestion Corridor and Taking Chances



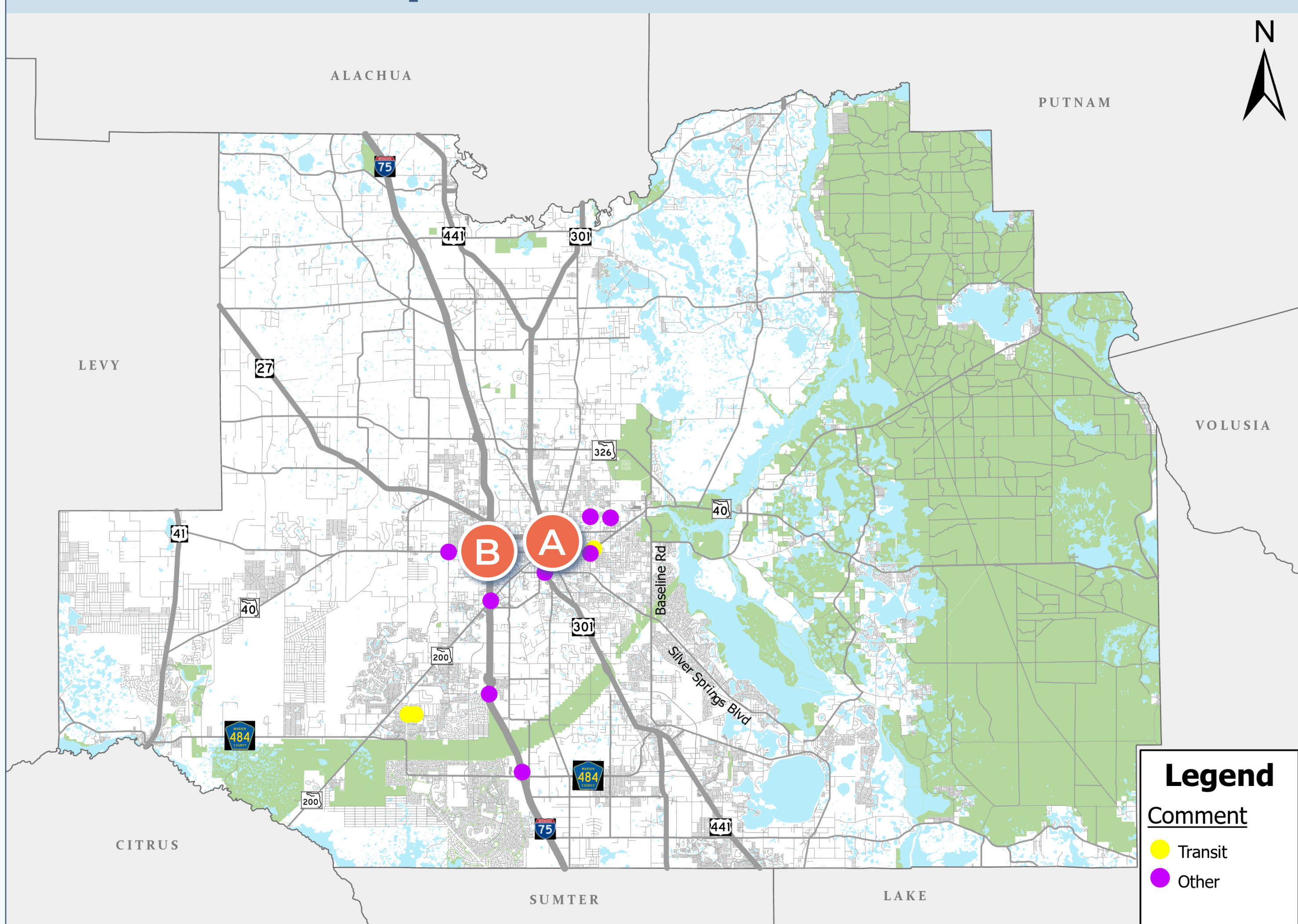
A recent survey of Marion County residents asked where they saw issues with bicycle/pedestrian infrastructure and transit/other transportation and infrastructure. The maps below highlight the areas of the county with the most issues.

## Bicycle & Pedestrian Comments

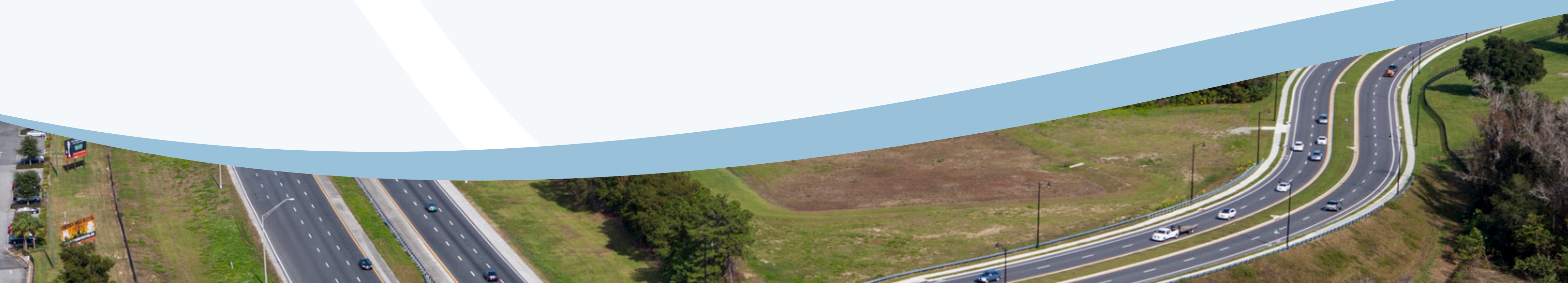


- A** Needs Bike Lanes and Sidewalks
- B** Needs Bike Lanes, Sidewalks, and Streetlighting at Crossings

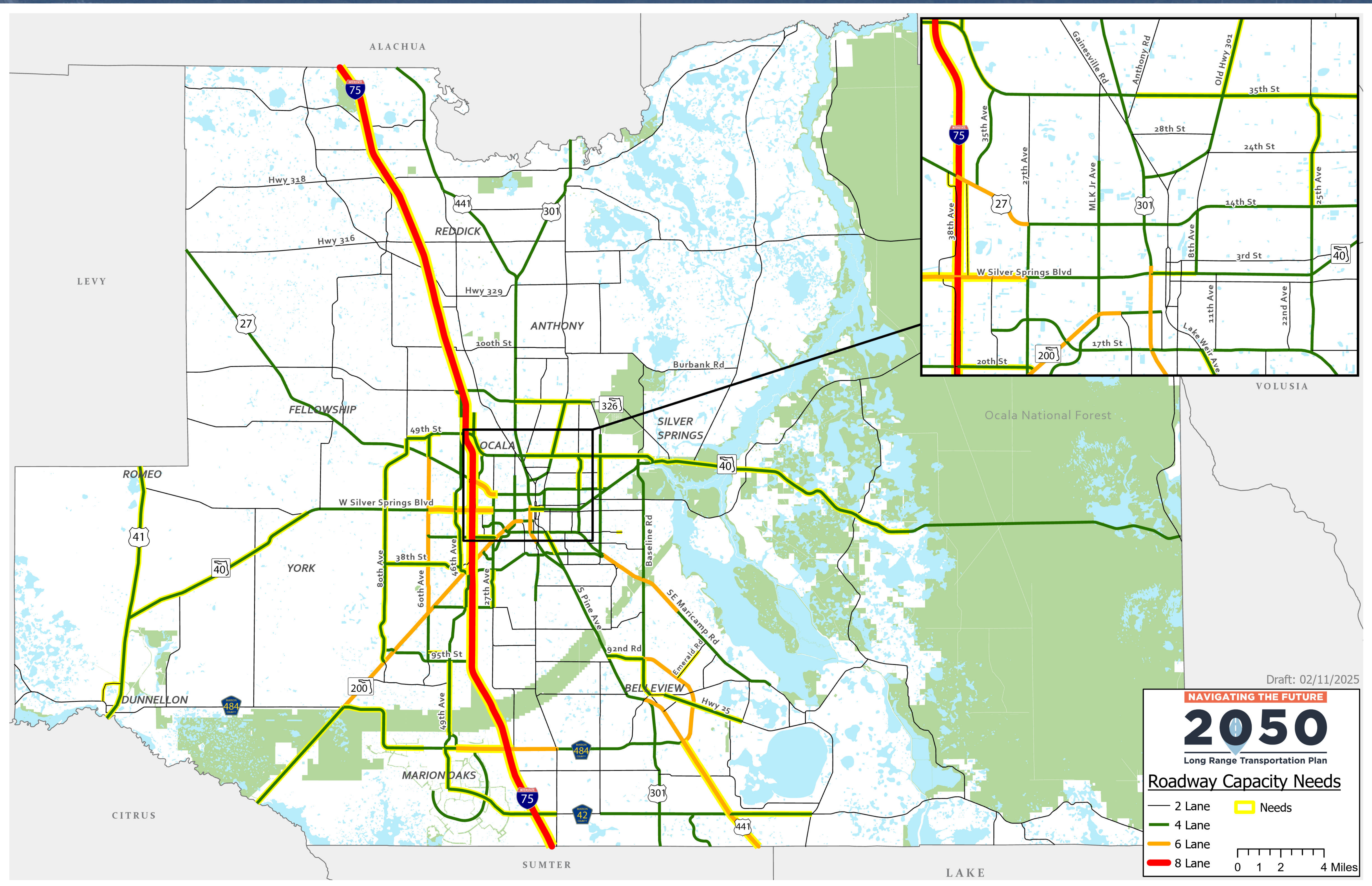
## Public Transportation & Other Comments



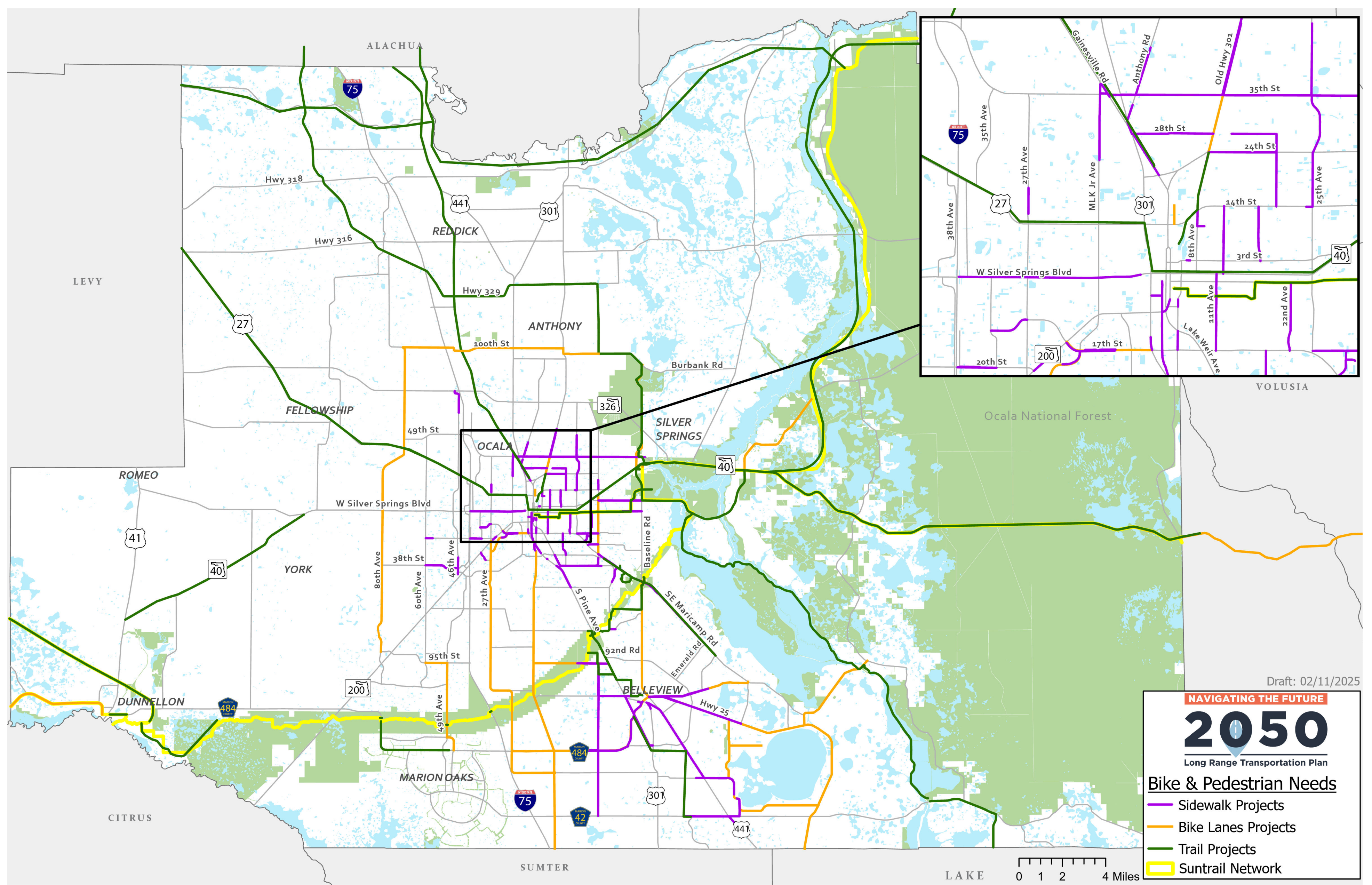
- A** Need Clean Downtown Bus Stops
- B** Address Congestion and Beautify Downtown



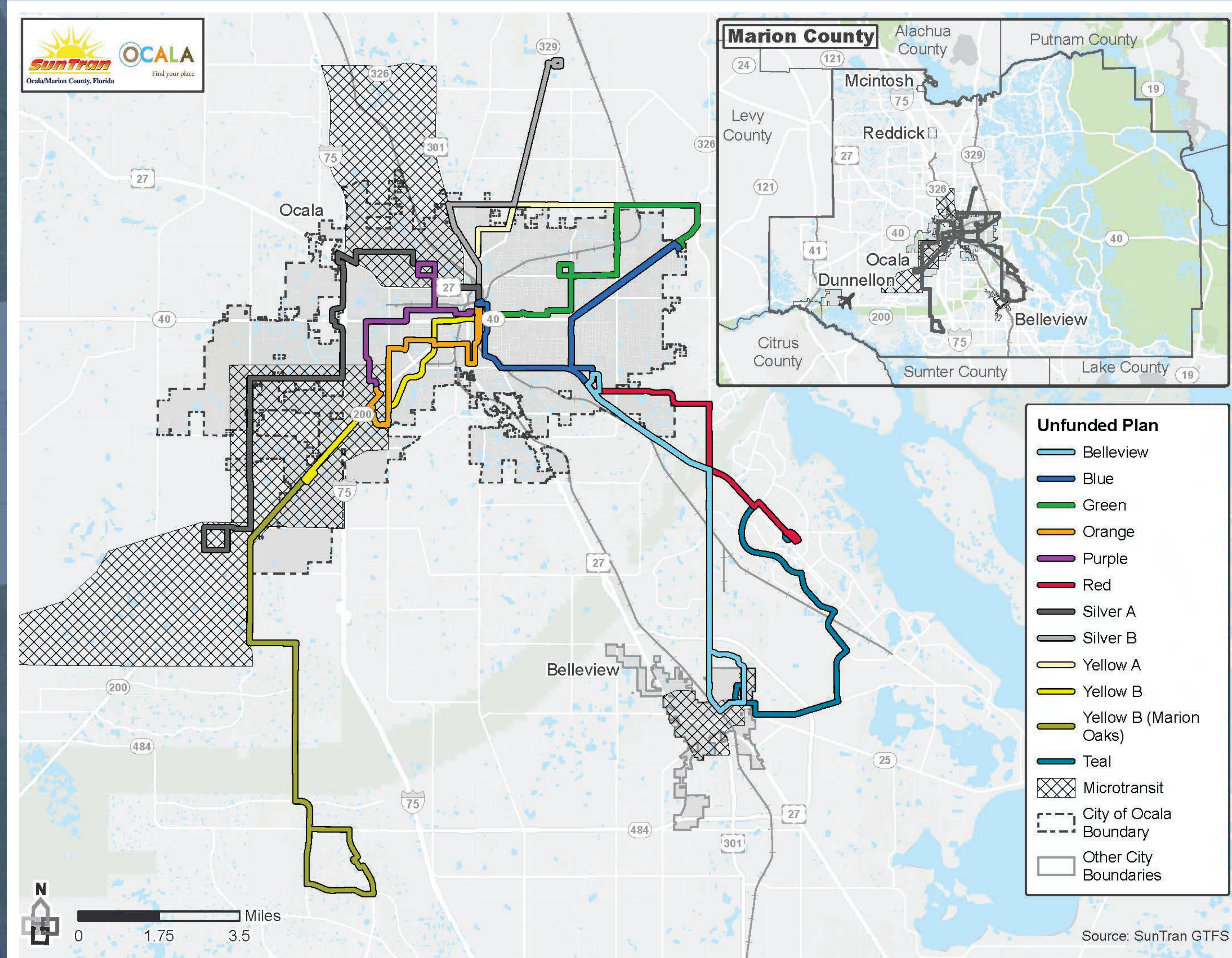
# Preliminary Capacity Roadway Needs Assessment



## Bike, Pedestrian, and Trail



## Transit Needs





**NAVIGATING THE FUTURE**

# 2050

**Long Range Transportation Plan**

## THREE WAYS TO STAY ENGAGED

Scan to view the  
2050 LRTP Website



LIKE US ON  
**facebook**



FOLLOW US ON

